



# Pad-Ready Lots for Sale

**Todd Rice, CCIM**  
+1 501 850 0702  
todd.rice@colliers.com

**Brandon Rogers**  
+1 501 850 0722  
brandon.rogers@colliers.com

---

1 Allied Drive, Suite 1500  
Little Rock, AR 72202  
P: +1 501 372 6161  
F: +1 501 372 0671  
colliers.com/arkansas

## Northshore Business Park, North Little Rock, AR

Located between Crystal Hill Elementary  
and Arkansas Surgical Hospital

- Lot sizes from 0.9 - 4.05 acres
- Total available: 9.14 acres
- Sale price: \$6.00/SF (see next page for specific pricing)
- Pad ready sites - graded and ready for construction
- All utilities and road improvements in place including fiber
- Close access to I-430, I-40 and the Arkansas River Trail

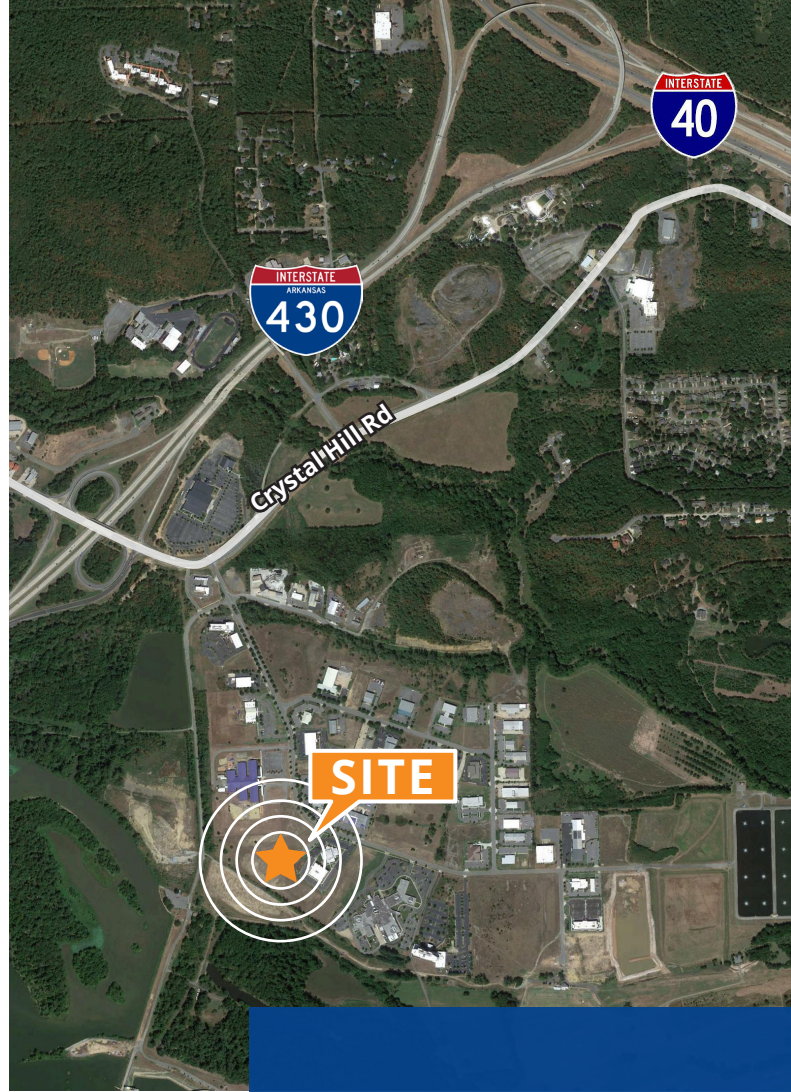
Copyright © 2021 Colliers International. Information herein has been obtained from sources deemed reliable, however its accuracy cannot be guaranteed. The user is required to conduct their own due diligence and verification.



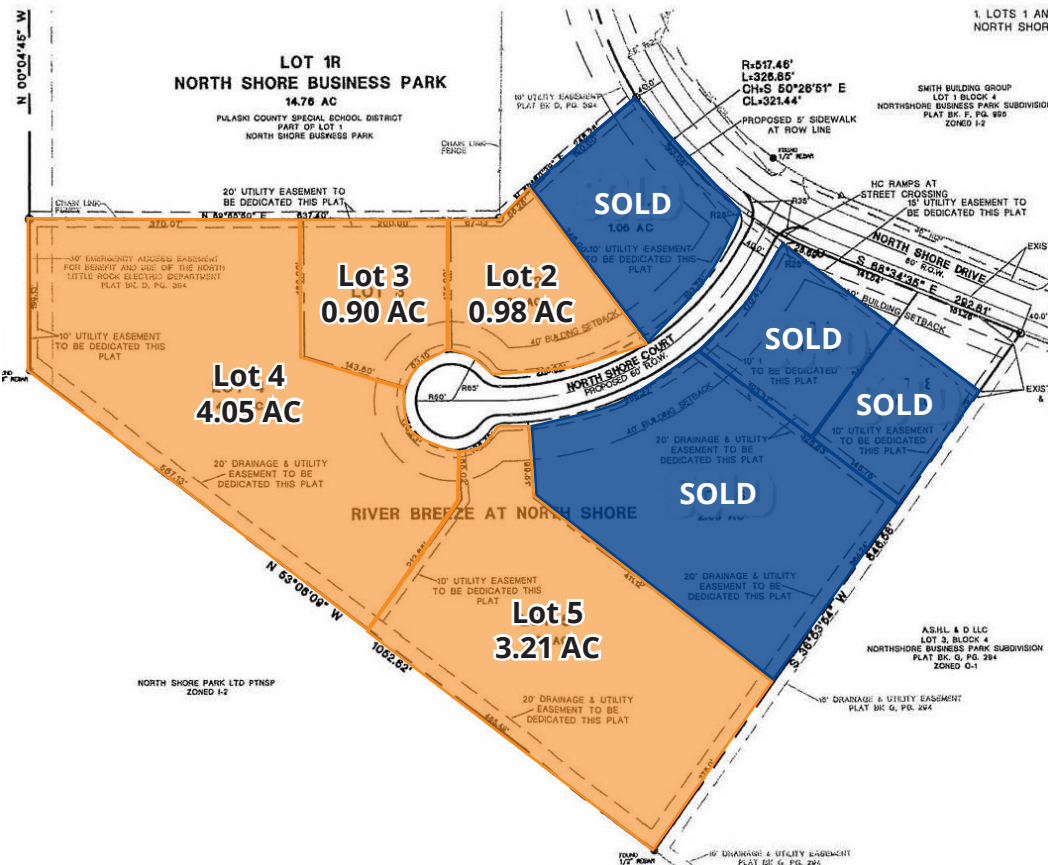
# For Sale

## Available Lots & Rates

Lot #	Acreage	\$/SF	Total Price
1	1.015	-	<b>SOLD</b>
2	0.98	\$6.00	\$256,132.80
3	0.90	\$6.00	\$235,224.00
4	4.05	\$6.00	\$1,058,508.00
5	3.21	\$6.00	\$838,965.60
6	2.64	-	<b>SOLD</b>
7	0.85	-	<b>SOLD</b>
8	0.87	-	<b>SOLD</b>



## Lot Layout



### Contact us:

**Todd Rice, CCIM**  
 +1 501 850 0702  
 todd.rice@colliers.com

**Brandon Rogers**  
 +1 501 850 0722  
 brandon.rogers@colliers.com

### Colliers | AR

1 Allied Drive, Suite 1500  
 Little Rock, AR 72202  
 P: +1 501 372 6161  
 F: +1 501 372 0671



# Northshore Business Park

