

23 BROADWAY
ARLINGTON, MA 02474

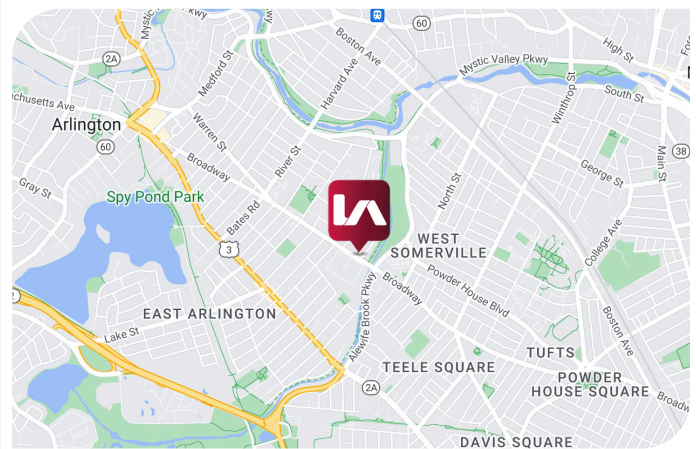


PROPERTY OVERVIEW

AVAILABLE SPACE:	2nd Fl: ±1,100 - 3,806 SF 3rd Fl: ±3,806 SF
TYPE:	Class C
RBA:	±10,850 SF
YEAR BUILT:	1990
NO. OF FLOORS:	Three (3)
ELEVATORS:	One (1)
PARKING:	On-site parking
CONFIGURATION:	2nd Fl: 6 private offices, conference room and a kitchenette 3rd Fl: 2 private offices, large conference room and a kitchenette

23 Broadway is a modern office building centrally located in Arlington with convenient access to Somerville and Cambridge. There is a MBTA bus stop in front of the building.

The building offers two floor of available space which can be leased together or separately. Each floor provides open space, private offices, large conference rooms, a kitchenette and dedicated parking spaces. which is well suited for technology companies, architecture firms, financials services, mortgage company, medical offices, and nonprofits.

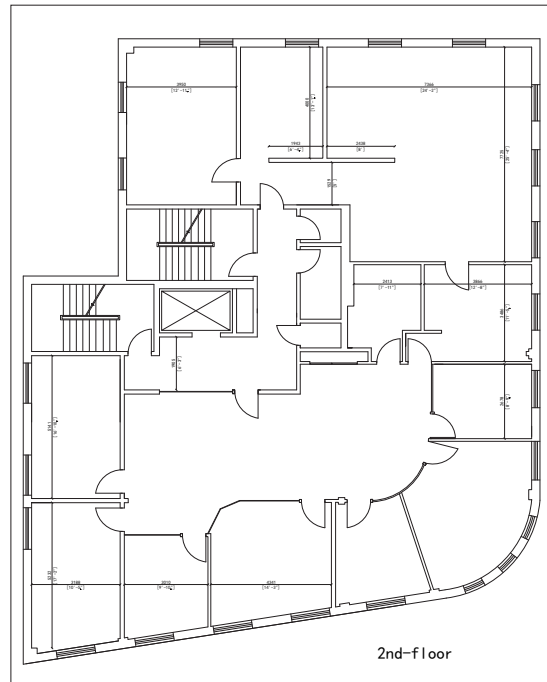
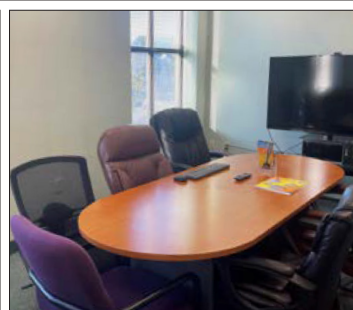
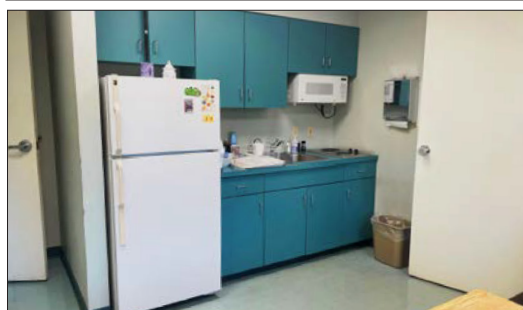
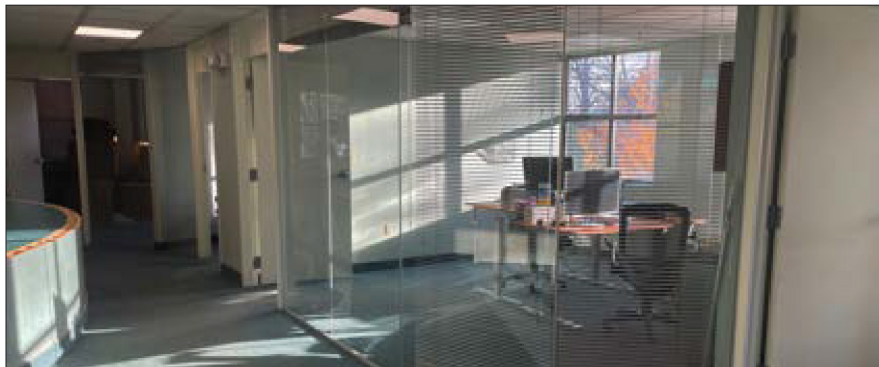


All information furnished regarding property for sale, rental or financing is from sources deemed reliable, but no warranty or representation is made to the accuracy thereof and same is submitted to errors, omissions, change of price, rental or other conditions prior to sale, lease or financing or withdrawal without notice. No liability of any kind is to be imposed on the broker herein.

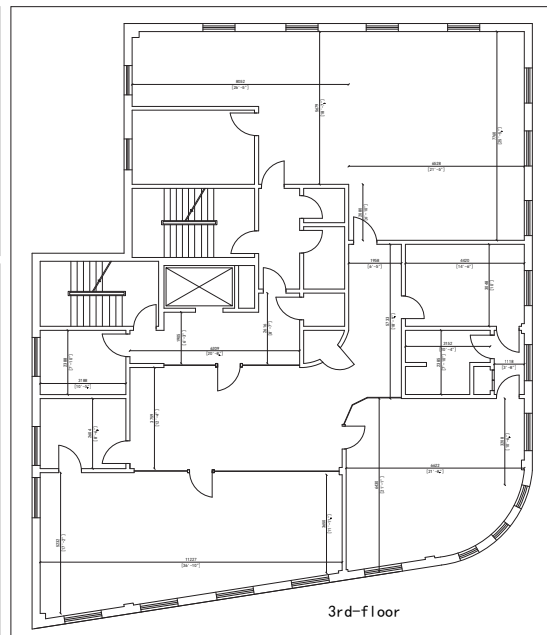
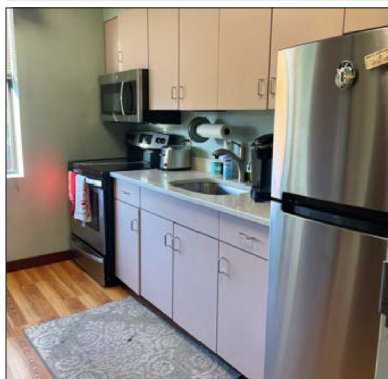
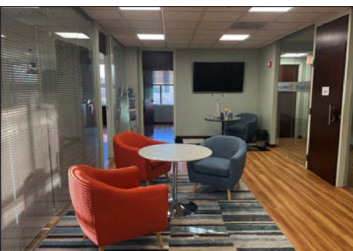
23 BROADWAY

ARLINGTON, MA 02474

2ND FLOOR | ± 1,100 - 3,806 SF



3RD FLOOR | ± 3,806 SF



STEPHANIE DEERING

Director

sdeering@lee-associates.com

C. 781.608.5964



LEE & ASSOCIATES
COMMERCIAL REAL ESTATE SERVICES

All information furnished regarding property for sale, rental or financing is from sources deemed reliable, but no warranty or representation is made to the accuracy thereof and same is submitted to errors, omissions, change of price, rental or other conditions prior to sale, lease or financing or withdrawal without notice. No liability of any kind is to be imposed on the broker herein.