

FOR LEASE OR SALE

133 SCANLAN STREET

NEWTON, MISSISSIPPI 39345

Ransom Pipes, CCIM
225.810.3379
rpipes@mmcre.com

Jonathan Walker, CCIM, MBA
225.810.3394
jwalker@mmcre.com

This 606,000 square foot industrial facility on 27.5 acres in Newton, MS is ideal for manufacturing companies or large warehouse users looking for a strategic location in the southeast region. With its convenient access to Interstate 20, and location just 60 miles east of Jackson, MS, it offers easy access for transportation and distribution needs.

The entire warehouse is under a conditioned roof and a large portion of it contains 30' clear height. Use of up to all 37 loading docks is available, and there is an opportunity to take only a portion of the building. Also included is 20,000 square feet of office area, complete with management offices, training rooms, an in-house infirmary, and a cafeteria, making it a facility suitable for various operational requirements. Trained workforce is located in this immediate area, as La-Z-Boy has been in business here for over fifty years.





[CLICK HERE TO VIEW VIRTUAL TOUR](#)



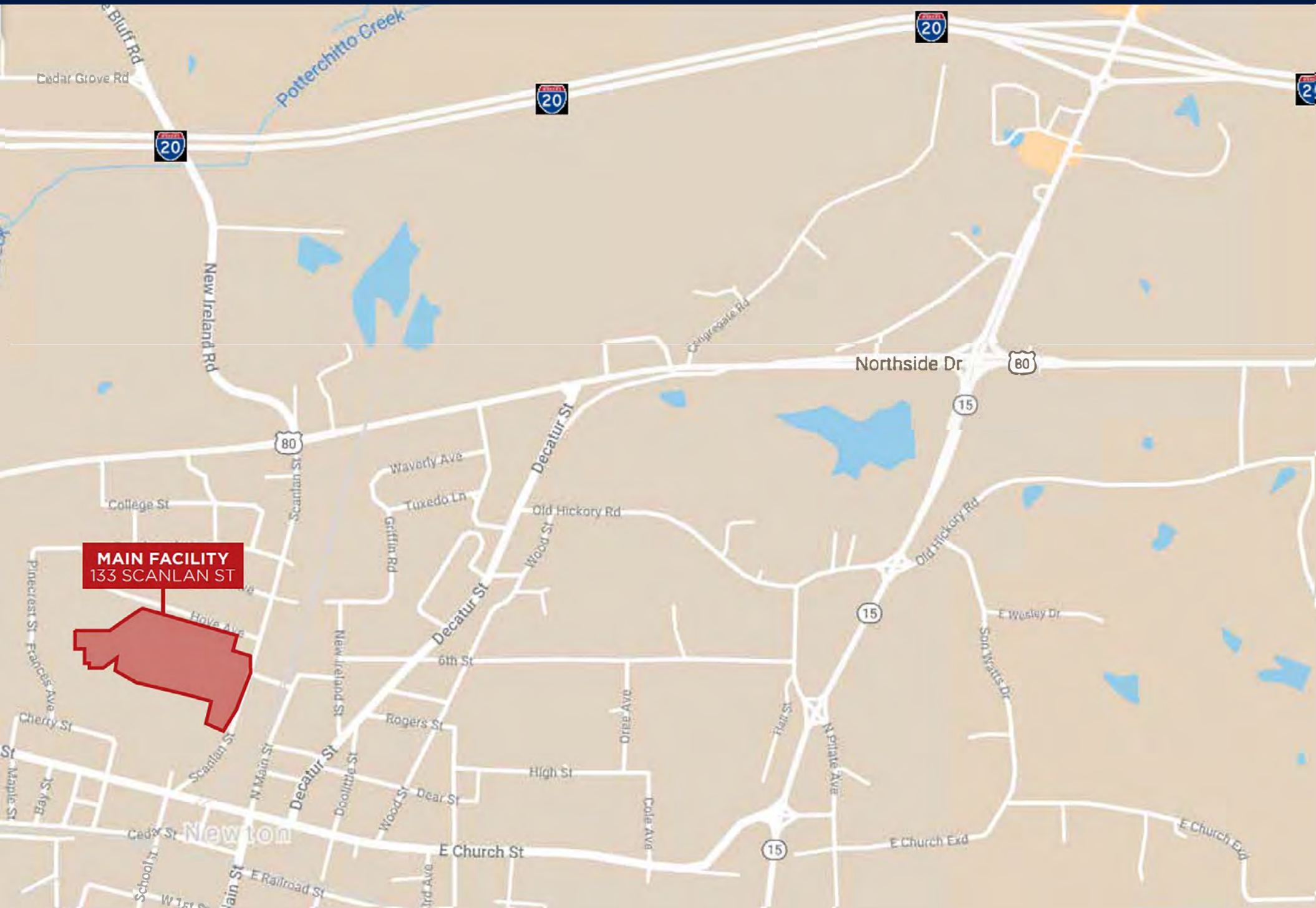
BUILDING SPECIFICATIONS

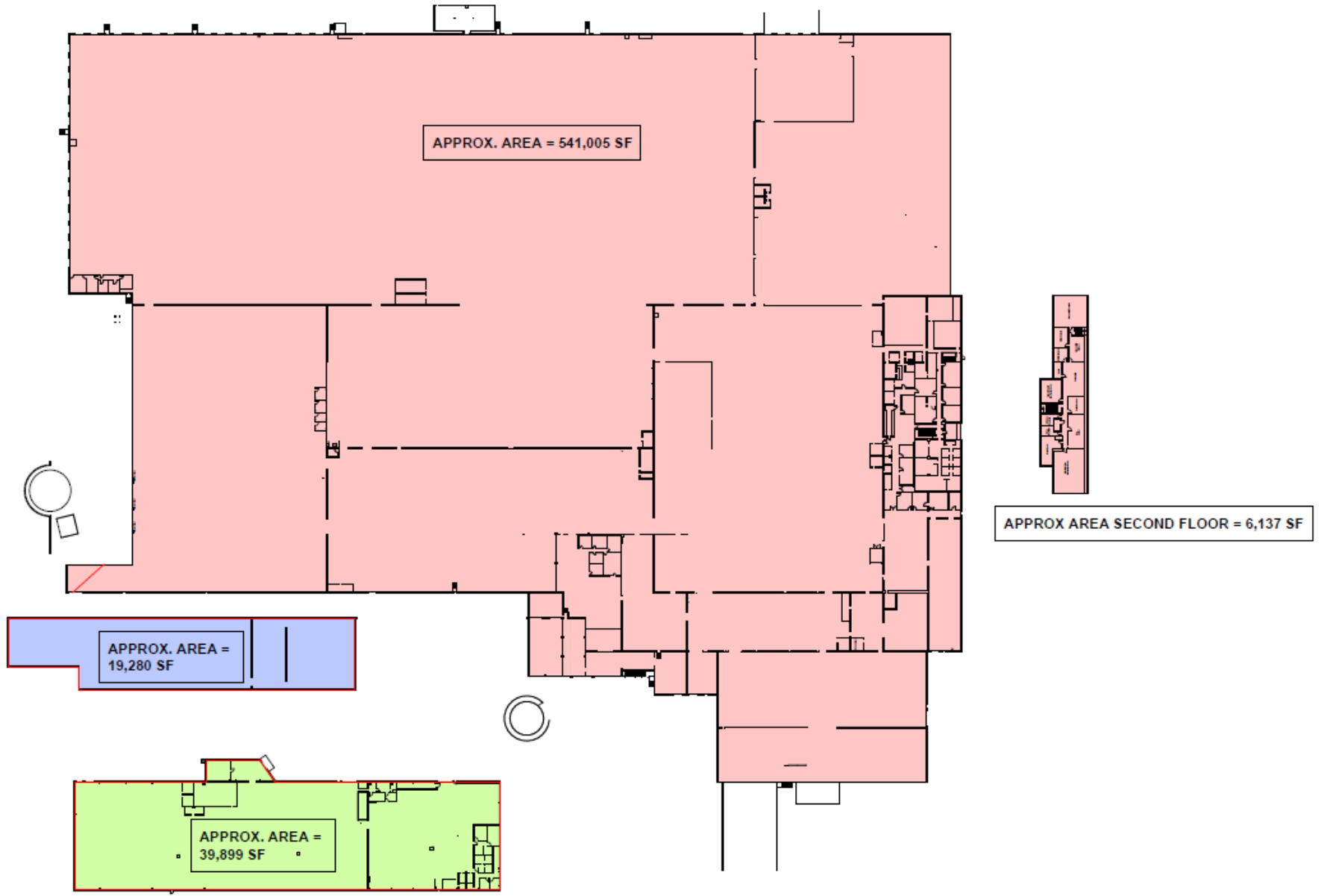
133 SCANLAN STREET - MAIN

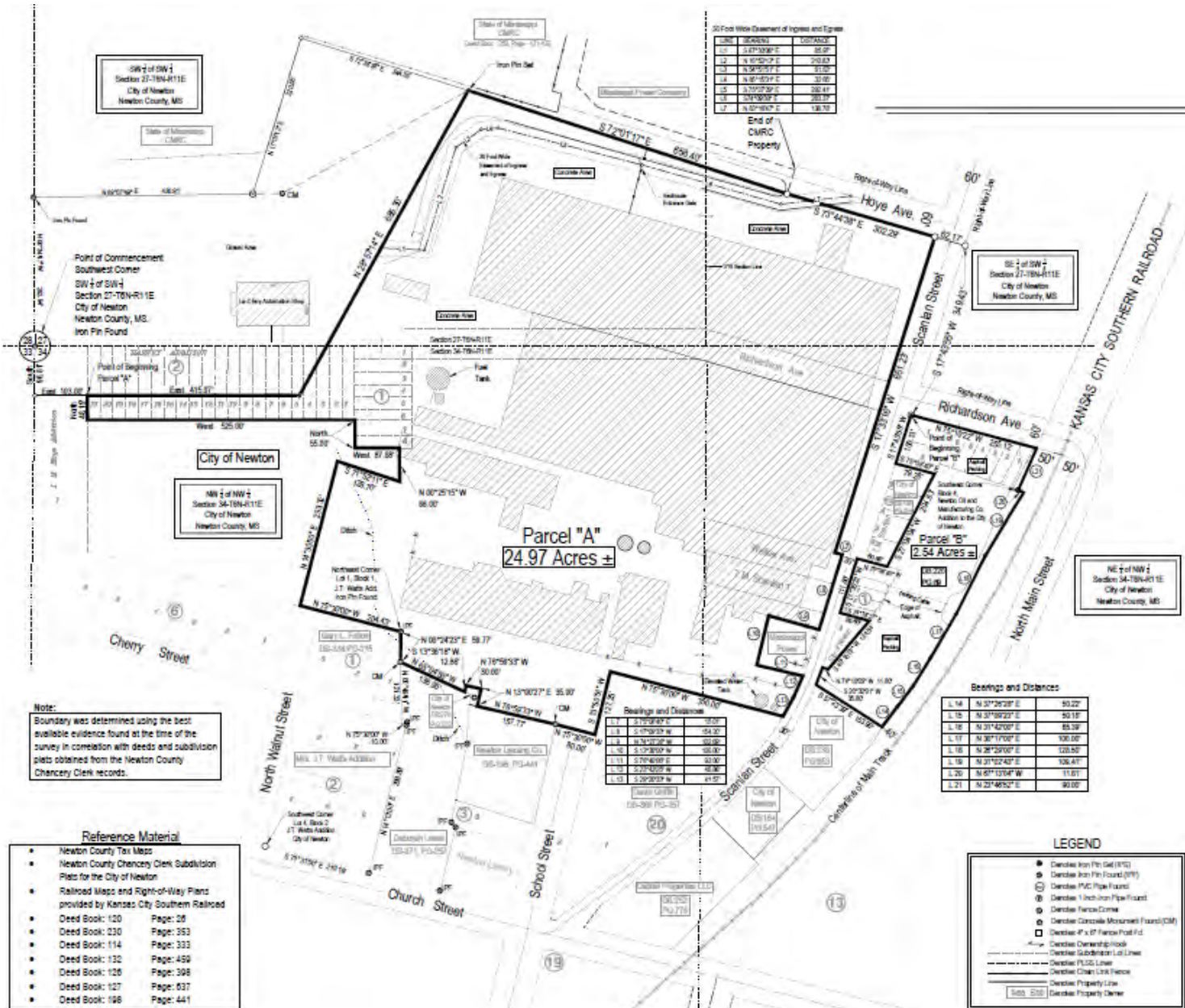
BUILDING SIZE	606,321 SF	1. 547,142 SF 2. 19,280 SF 3. 39,899 SF
OFFICE SIZE	± 20,000 SF (2 Story)	
LEASE RATE/SALE PRICE	\$1.75/SF	\$10,000,000
YEAR BUILT/RENOV.	1967 / 2010	
PROPERTY TYPE	Manufacturing	
ZONING	L-2 Heaving Industrial	
LAND AREA	27.51 acres	
LAND USE	Light Industrial	
PERMITTED USE	General Industrial/Manufacturing	
COUNTY	Newton	
SUBMARKET	East Central Mississippi	
MARKET	Newton	
DOCK HIGH	37 Docks	
GROUND LEVEL	1 Drive-In	
RAMP DOOR	1	
CRANE	1 - 25 Ton Bridge Crane	
CLEAR HEIGHT	Estimated 15' - 30'	
POWER	Heavy Power	
SPRINKLERS	Robust system - 1 million gallon tank	
TRUCK COURT	Heavy Trailer Parking	
PARKING	± 250 Spaces	
RAIL ACCESS	None	
AVAILABLE	Immediately	

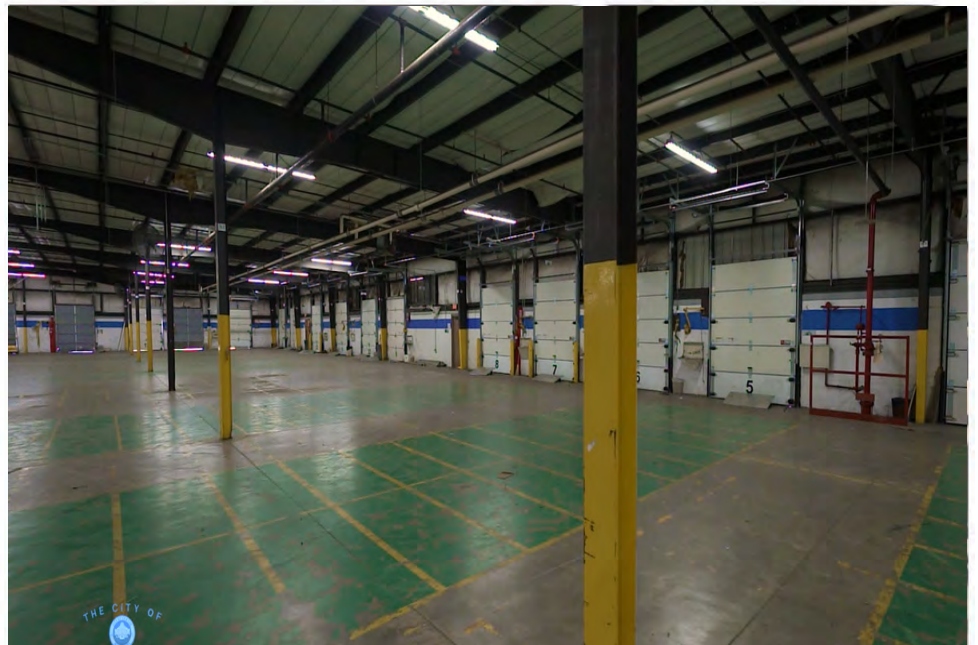
KEY HIGHLIGHTS

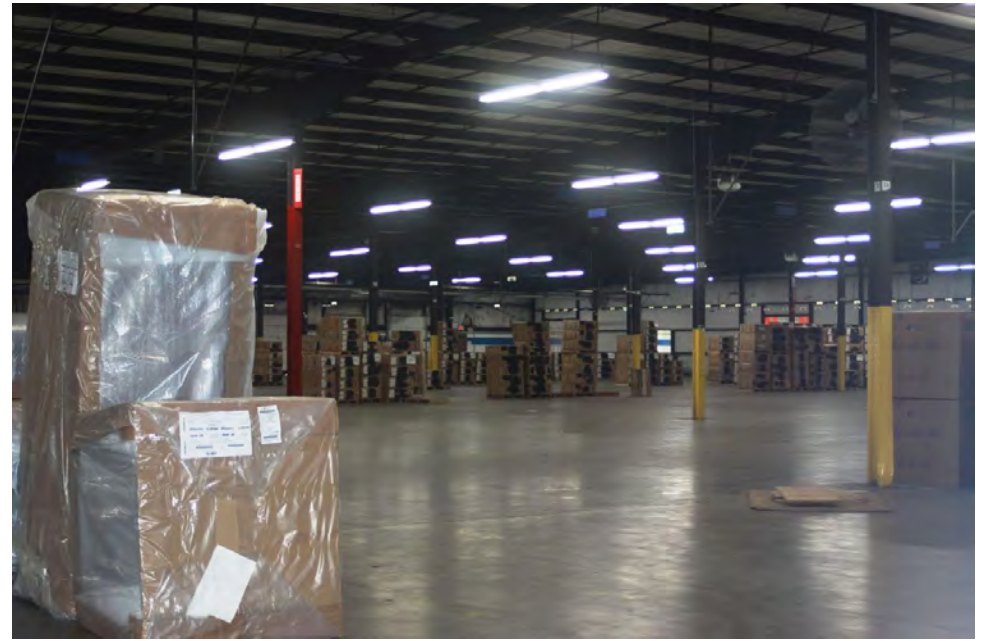
- Freestanding manufacturing building
- Two (2) floors
- Various ceiling heights from 15 to 30'
- Membrane roof
- Slab foundation
- Sealed, anti-static coated concrete floors
- 300 ton chiller with Energy management system and gas boilers

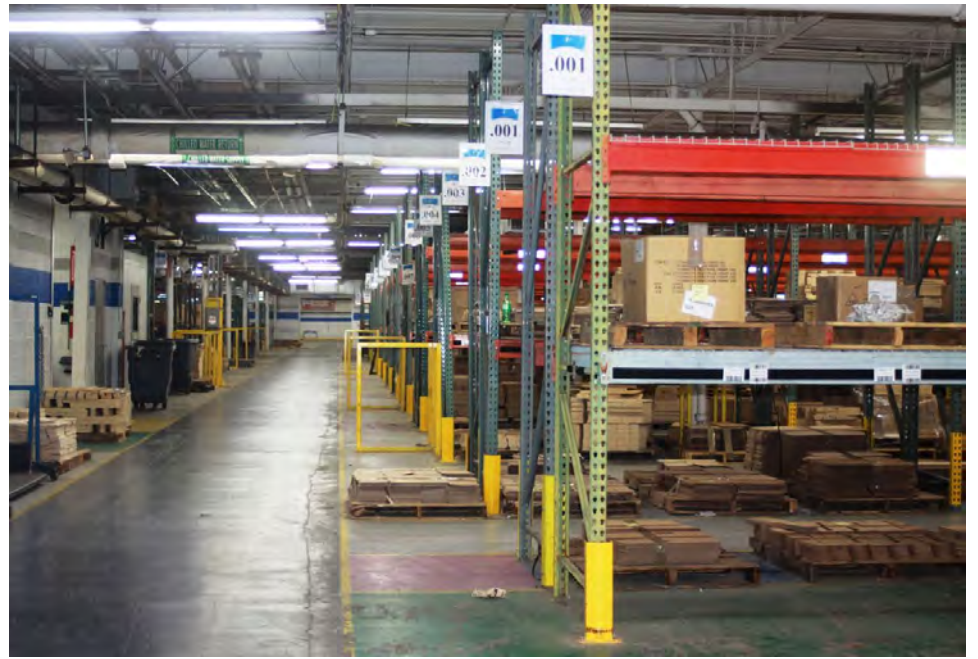


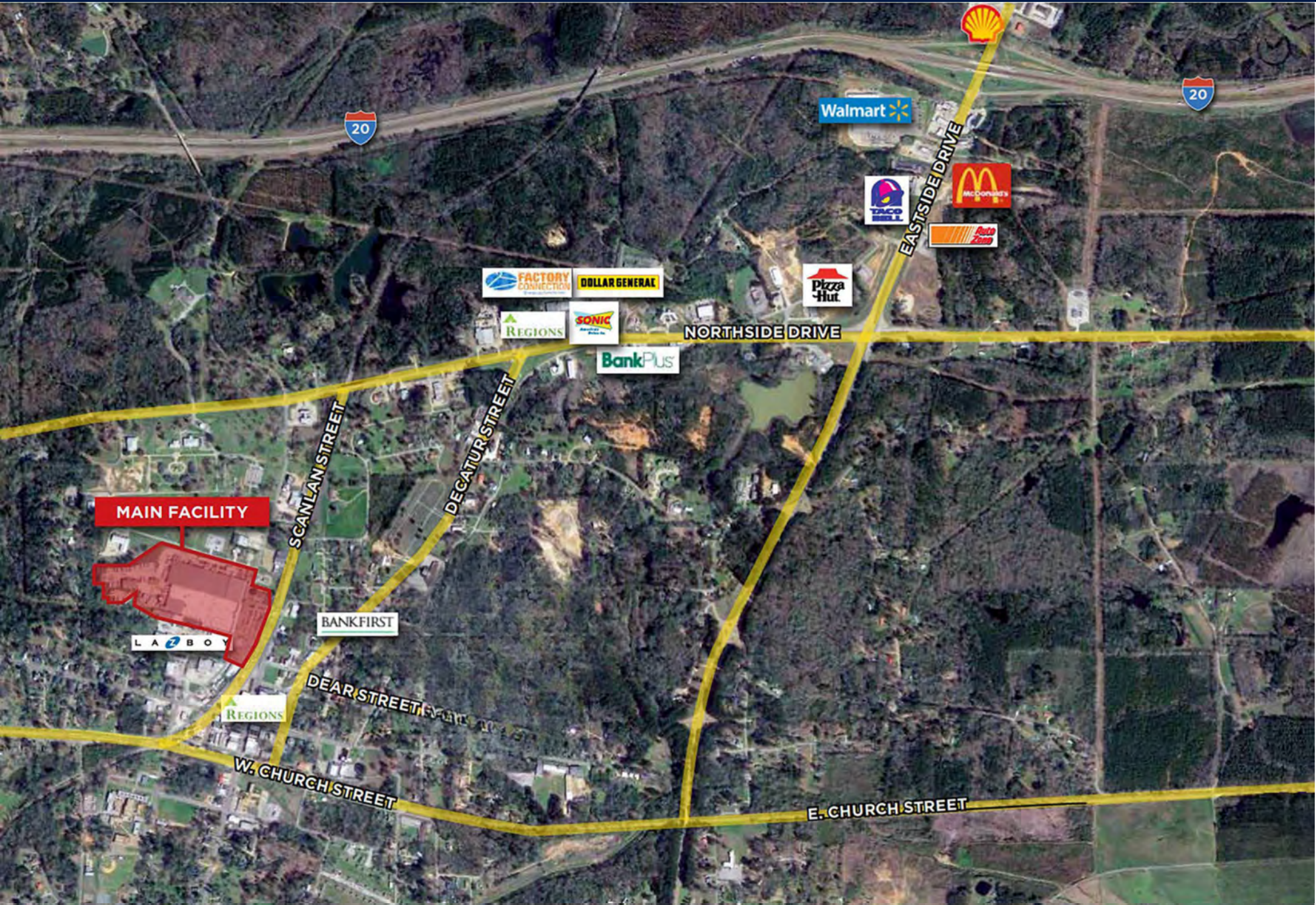


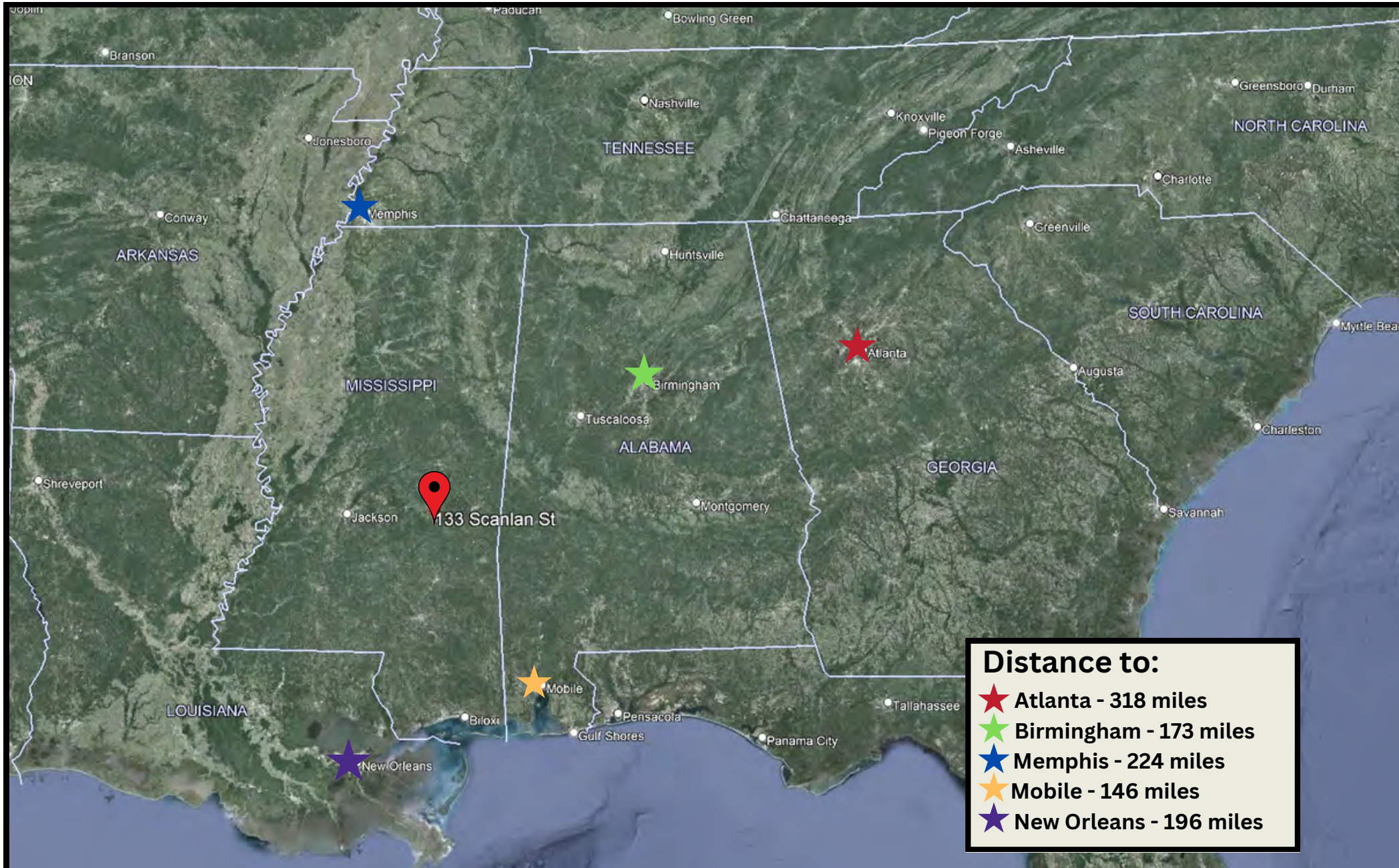












133 Scanlan Street & 300 N. Newton Avenue, Newton, MS 39345



CONTACT

For further information please contact:



RANSOM PIPES, CCIM

225.810.3379

rpipes@mmcre.com

MAESTRI · MURRELL INC.
REAL ESTATE



JONATHAN WALKER, CCIM, MBA

225.810.3394

jwalker@mmcre.com

MAESTRI · MURRELL INC.
REAL ESTATE



JEFF SPEED, CCIM (MS Broker)

601.987.0202

jeff@speedcres.com

SPEED
COMMERCIAL
REAL ESTATE