

FOR LEASE

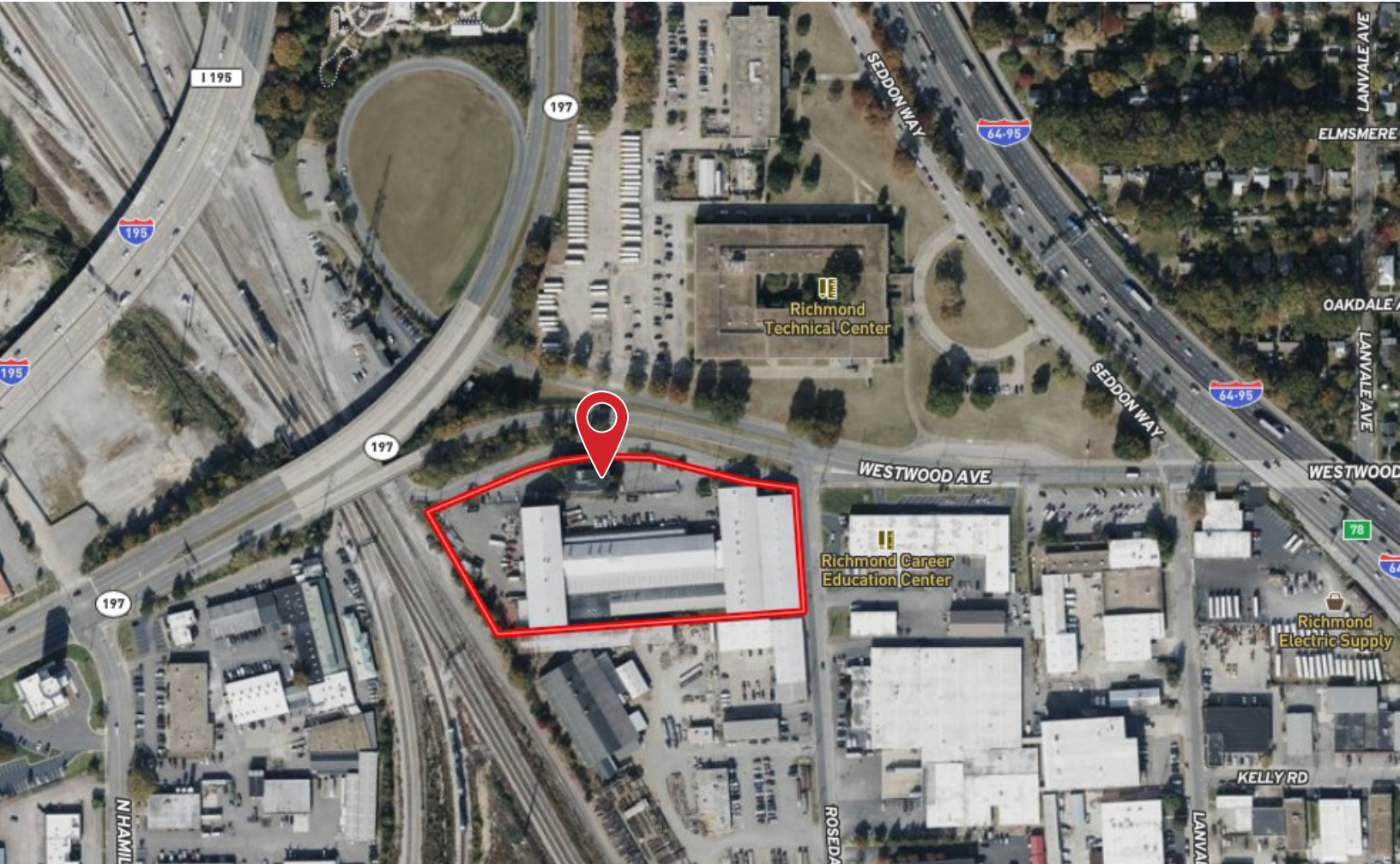
ZONED M-2

Industrial/Flex

2029-2031 Westwood Avenue | Richmond, VA 23230



COMMONWEALTH
COMMERCIAL
Comprehensive Property Solutions



PROPERTY HIGHLIGHTS

- › Warehouse, Office, & Outdoor Storage space available near Scott's Addition
- › Flexible arrangements up to 76,640± SF of warehouse and 9,800± SF of office
- › Landlord willing to subdivide down to 3,000± SF warehouse suites
- › Two (2) 25' and one (1) 14' drive-in loading doors and one (1) dock high loading door and Landlord willing to install additional dock doors
- › Up to 32' 10" clear height
- › Zoned M-2
- › 0.5± AC fenced & paved outdoor storage yard
- › Within 1 mile of I-95, I-64, & I-195
- › For Lease: Call agents for pricing

FOR MORE INFORMATION:

BEN BRUNI, SIOR

Senior Vice President | Partner

804-793-0046

bbruni@commonwealthcommercial.com

ETHAN LUSTIG

Sales & Leasing Associate

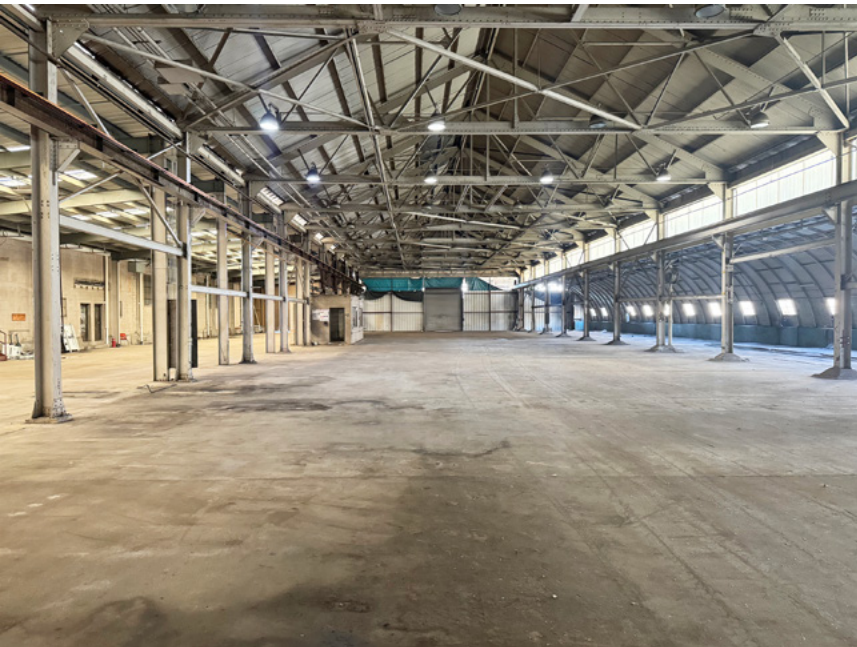
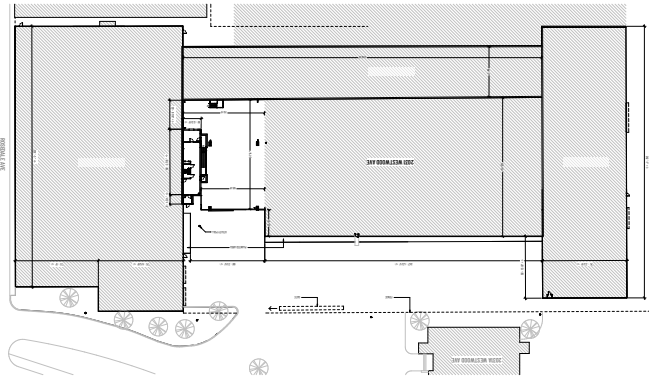
804-592-7579

elustig@commonwealthcommercial.com

Commonwealth Commercial Partners, LLC represents the landlord of this property. Information contained herein is deemed reliable but is not guaranteed.



FLOOR PLAN

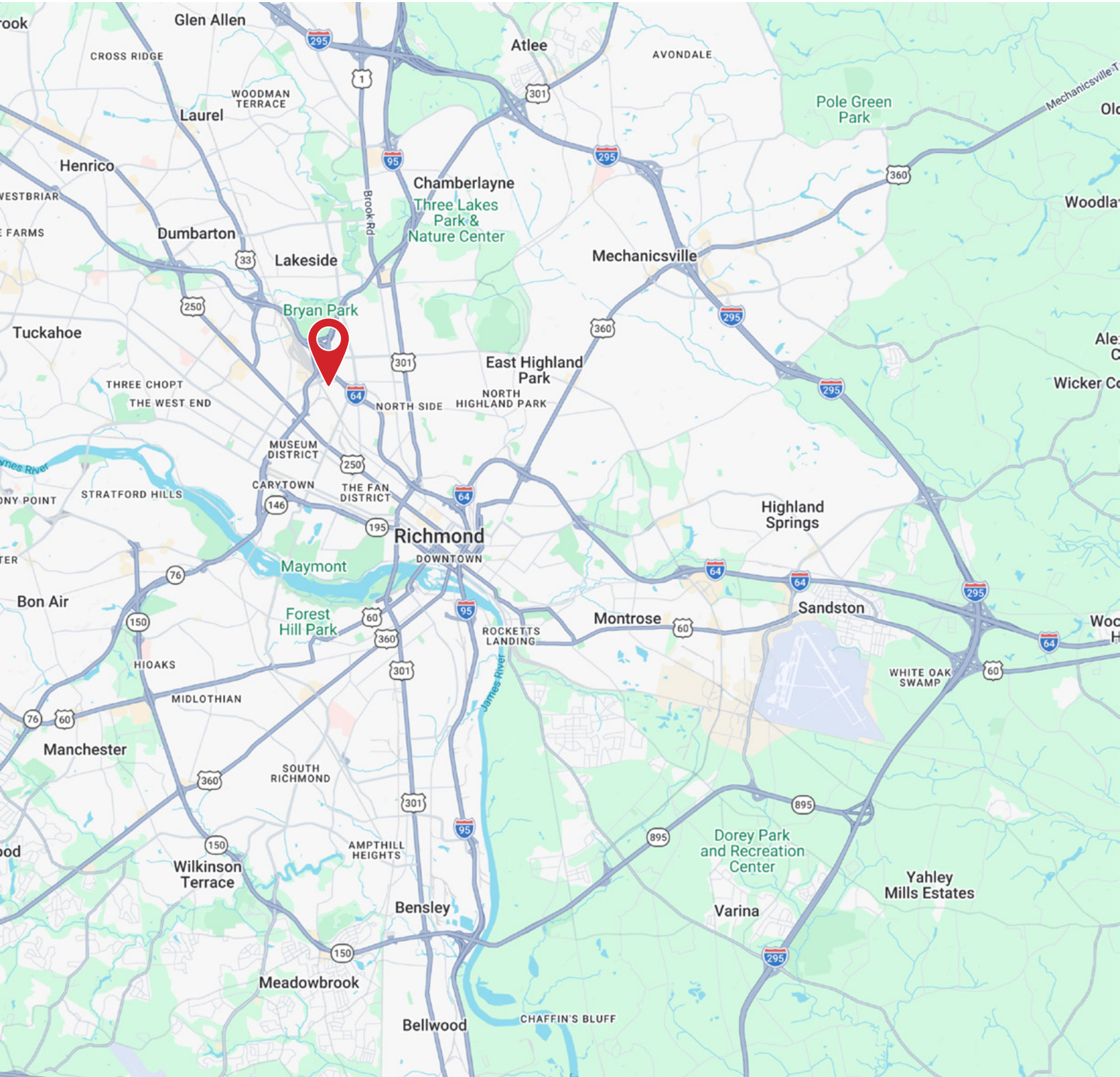


Outdoor Storage Yard: 0.5 AC fenced & paved



PRIME INDUSTRIAL LOCATION

The property benefits from excellent proximity to major transportation routes—including I-195, I-64, and I-95.



FOR LEASE | 2029-2031 WESTWOOD AVENUE | RICHMOND, VA 23230

