

FOR LEASE | OFFICE



500 N WASHINGTON AVE., TITUSVILLE, FL 32796

PROPERTY FEATURES:

- Building Size: 25,243 SF
- 996 SF - 4,435 SF Available
- Built-out, move-in ready, medical office suites in a strategically located building
- Within a mile from Parrish Medical Center and its 1,200 employees
- Within a mile from Eastern Florida State College campus which has a student/faculty population of 1,711 and its 1,200 employees
- Adjacent to the Space Coast Cancer Center
- Ample Parking: 5.28/1,000 SF

2020 DEMOGRAPHICS	1 MILE	3 MILES	5 MILES
Population	5,058	32,574	55,089
Average HH Income	\$55,634	\$60,652	\$65,152
Average Age	48.2	46.3	47.5
Daytime Population	9,605	33,348	54,662

TRAFFIC COUNT

US 1/N. Washington Ave. 26,500 AADT

MAP



Contact us now for more information

RUSTY STOECKEL
BROKER/ASSOCIATE
407-422-8191
rusty@dresi.com

Demetree Global
941 W. Morse Blvd | Winter Park, FL 32789
DemetreeGlobal.com



Contact us now for more information

RUSTY STOECKEL
BROKER/ASSOCIATE
407-422-8191
rusty@dresi.com

Demetree Global
941 W. Morse Bld | Winter Park, FL 32789
DemetreeGlobal.com

No warranty or representation, express or implied, is made as to the accuracy of the information contained herein, and same is submitted subject errors, omissions, change of price, rental or other conditions, withdrawal without notice, and to any special listing and conditions imposed by our principals.



Contact us now for more information

RUSTY STOECKEL
BROKER/ASSOCIATE
407-422-8191
rusty@dresi.com

Demetree Global
941 W. Morse Blvd | Winter Park, FL 32789
DemetreeGlobal.com



Contact us now for more information

RUSTY STOECKEL
BROKER/ASSOCIATE
407-422-8191
rusty@dresi.com

Demetree Global
941 W. Morse Bld | Winter Park, FL 32789
DemetreeGlobal.com

No warranty or representation, express or implied, is made as to the accuracy of the information contained herein, and same is submitted subject errors, omissions, change of price, rental or other conditions, withdrawal without notice, and to any special listing and conditions imposed by our principals.

Entrance Area



Courtyard Area

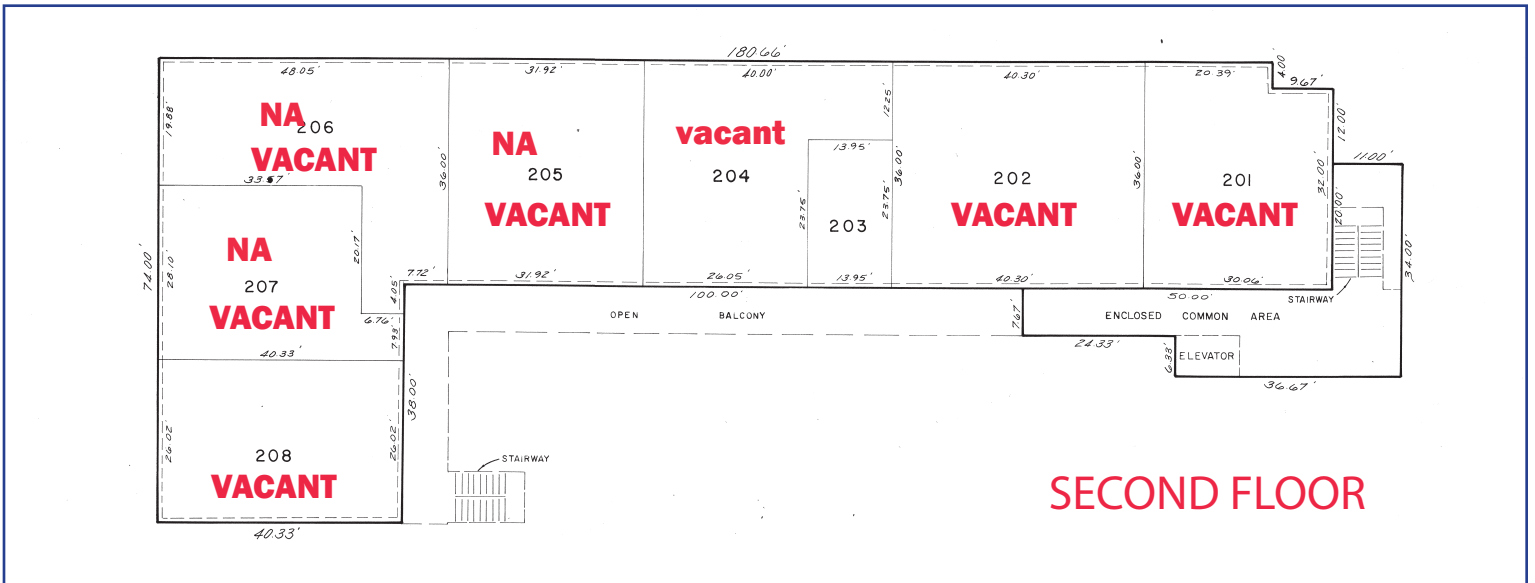
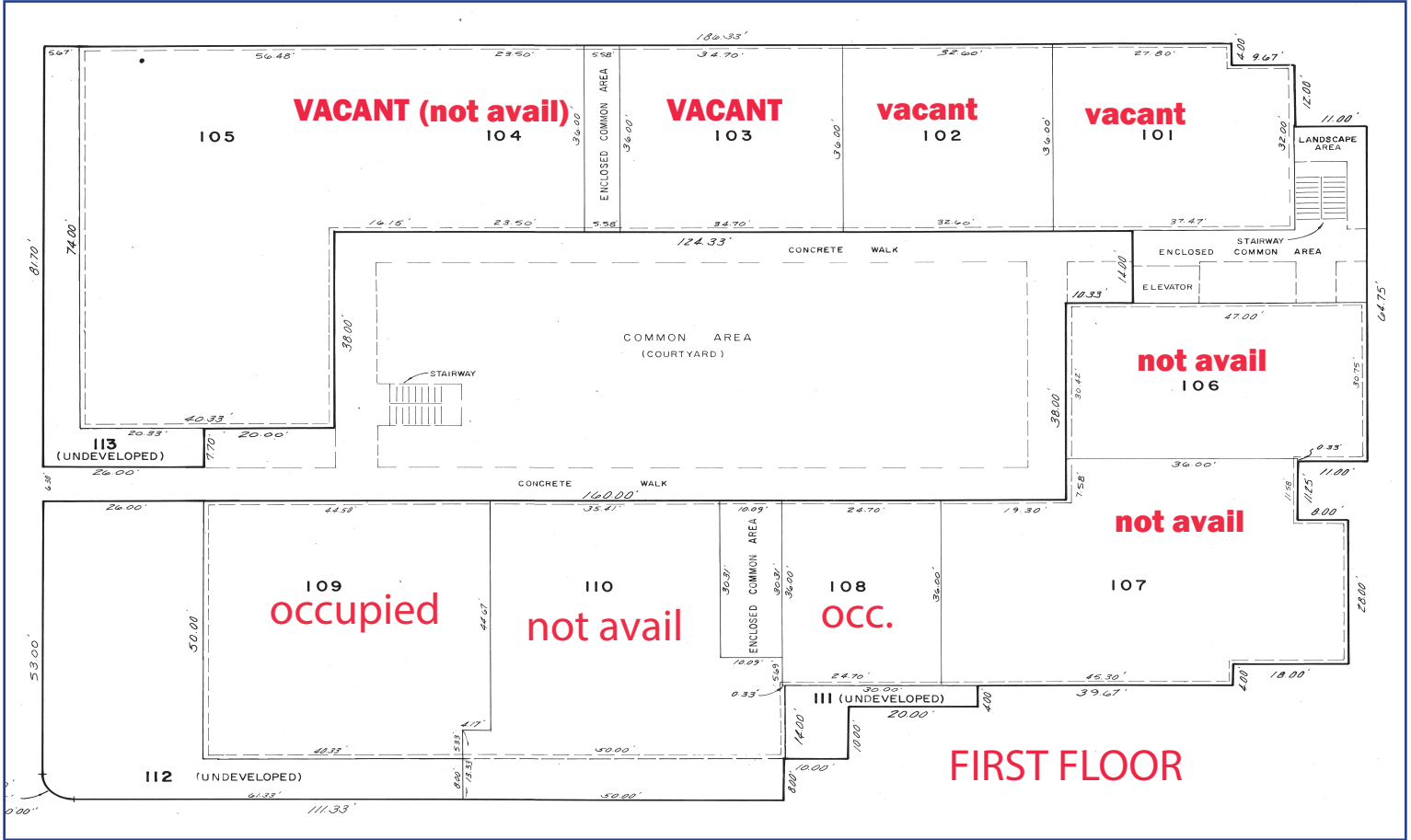


Contact us now for more information

RUSTY STOECKEL
BROKER/ASSOCIATE
407-422-8191
rusty@dresi.com

Demetree Global
941 W. Morse Bld | Winter Park, FL 32789
DemetreeGlobal.com

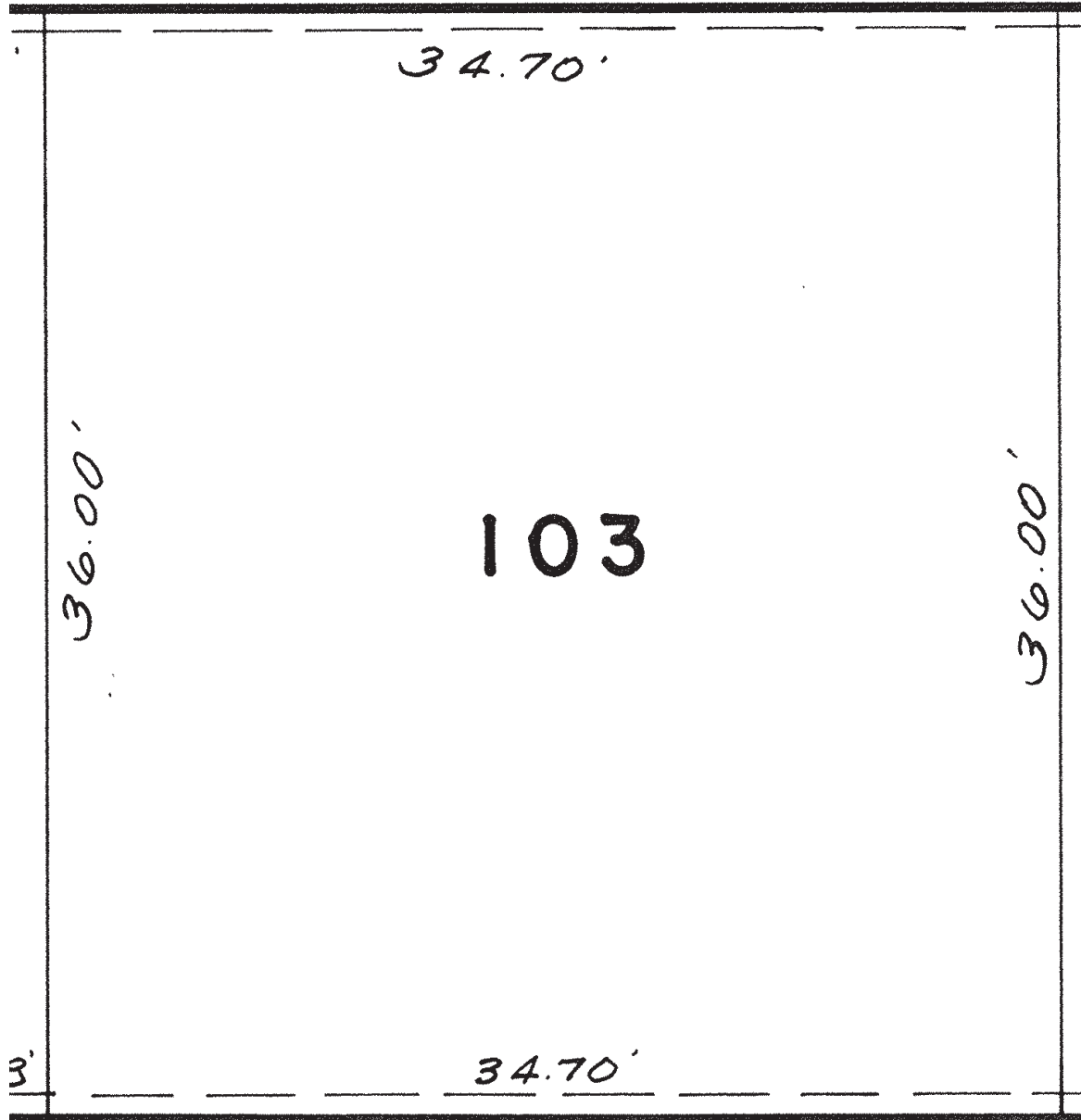
No warranty or representation, express or implied, is made as to the accuracy of the information contained herein, and same is submitted subject errors, omissions, change of price, rental or other conditions, withdrawal without notice, and to any special listing and conditions imposed by our principals.



Contact us now for more information

RUSTY STOECKEL
BROKER/ASSOCIATE
407-422-8191
rusty@dresi.com

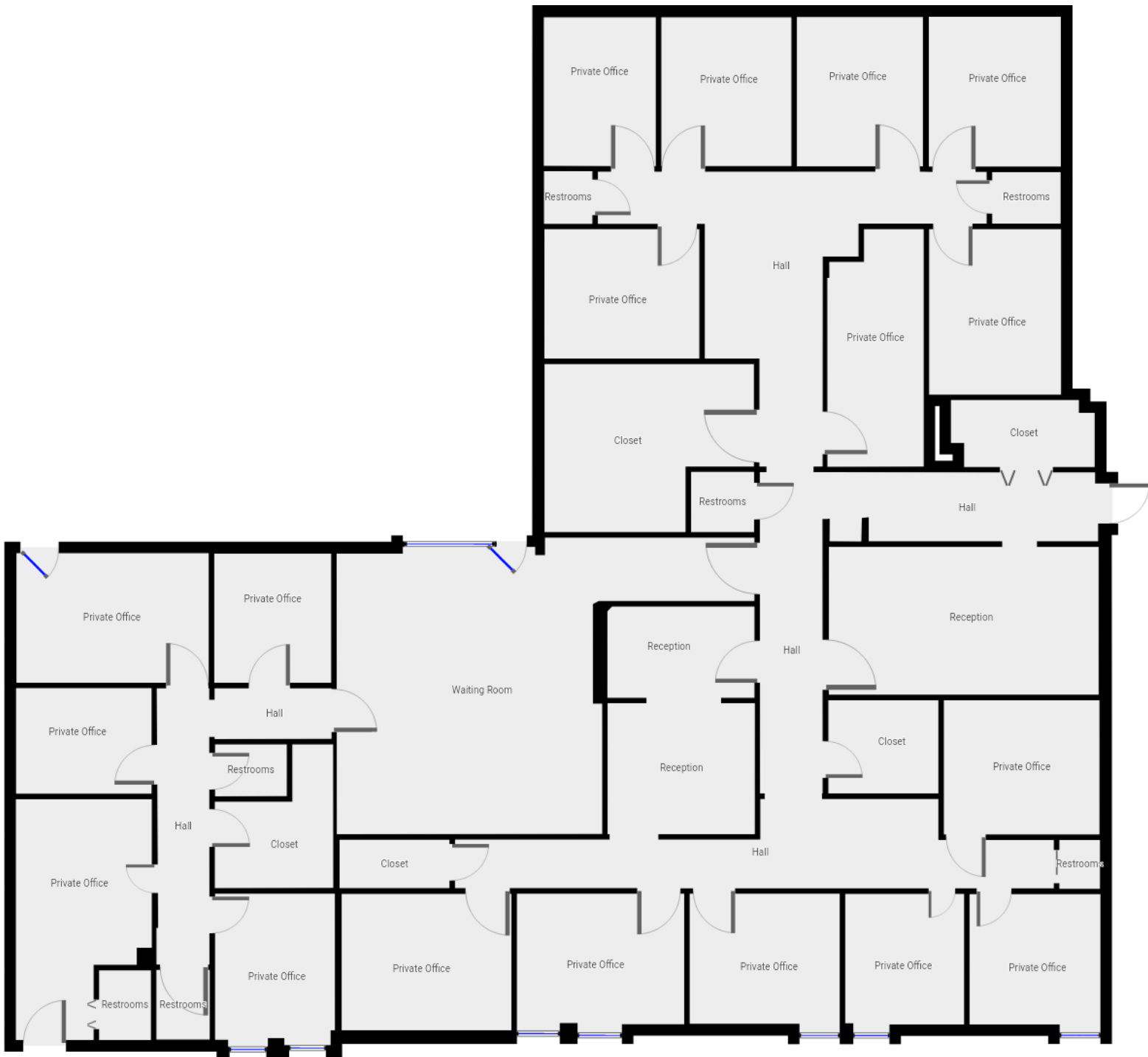
Demetree Global
941 W. Morse Blvd | Winter Park, FL 32789
DemetreeGlobal.com



Contact us now for more information

RUSTY STOECKEL
BROKER/ASSOCIATE
407-422-8191
rusty@dresi.com

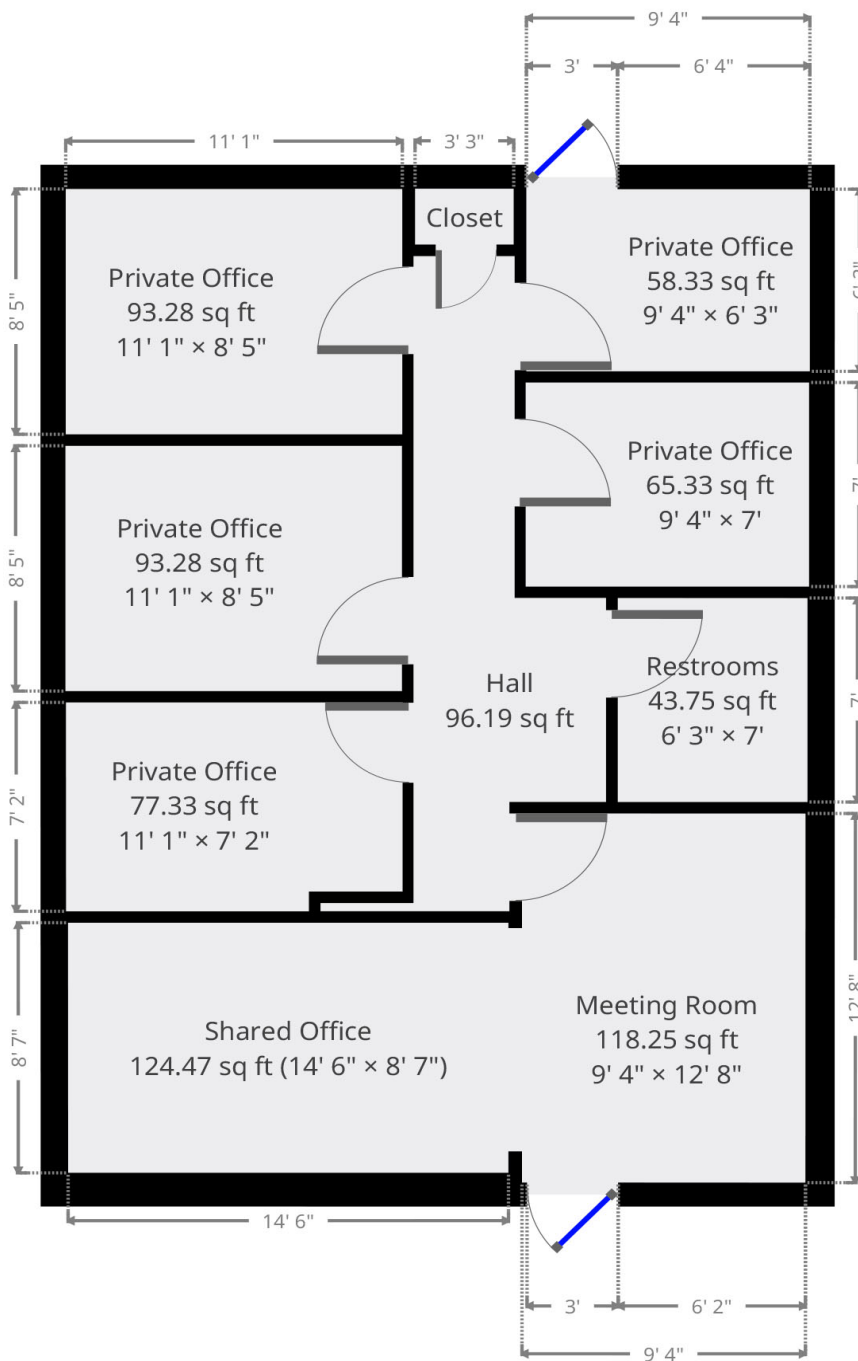
Demetree Global
941 W. Morse Bld | Winter Park, FL 32789
DemetreeGlobal.com



Contact us now for more information

RUSTY STOECKEL
BROKER/ASSOCIATE
407-422-8191
rusty@dresi.com

Demetree Global
941 W. Morse Bld | Winter Park, FL 32789
DemetreeGlobal.com



Contact us now for more information

RUSTY STOECKEL
BROKER/ASSOCIATE
407-422-8191
rusty@dresi.com

Demetree Global
941 W. Morse Bld | Winter Park, FL 32789
DemetreeGlobal.com



Contact us now for more information

RUSTY STOECKEL
BROKER/ASSOCIATE
407-422-8191
rusty@dresi.com

Demetree Global
941 W. Morse Bld | Winter Park, FL 32789
DemetreeGlobal.com



Contact us now for more information

RUSTY STOECKEL
BROKER/ASSOCIATE
407-422-8191
rusty@dresi.com

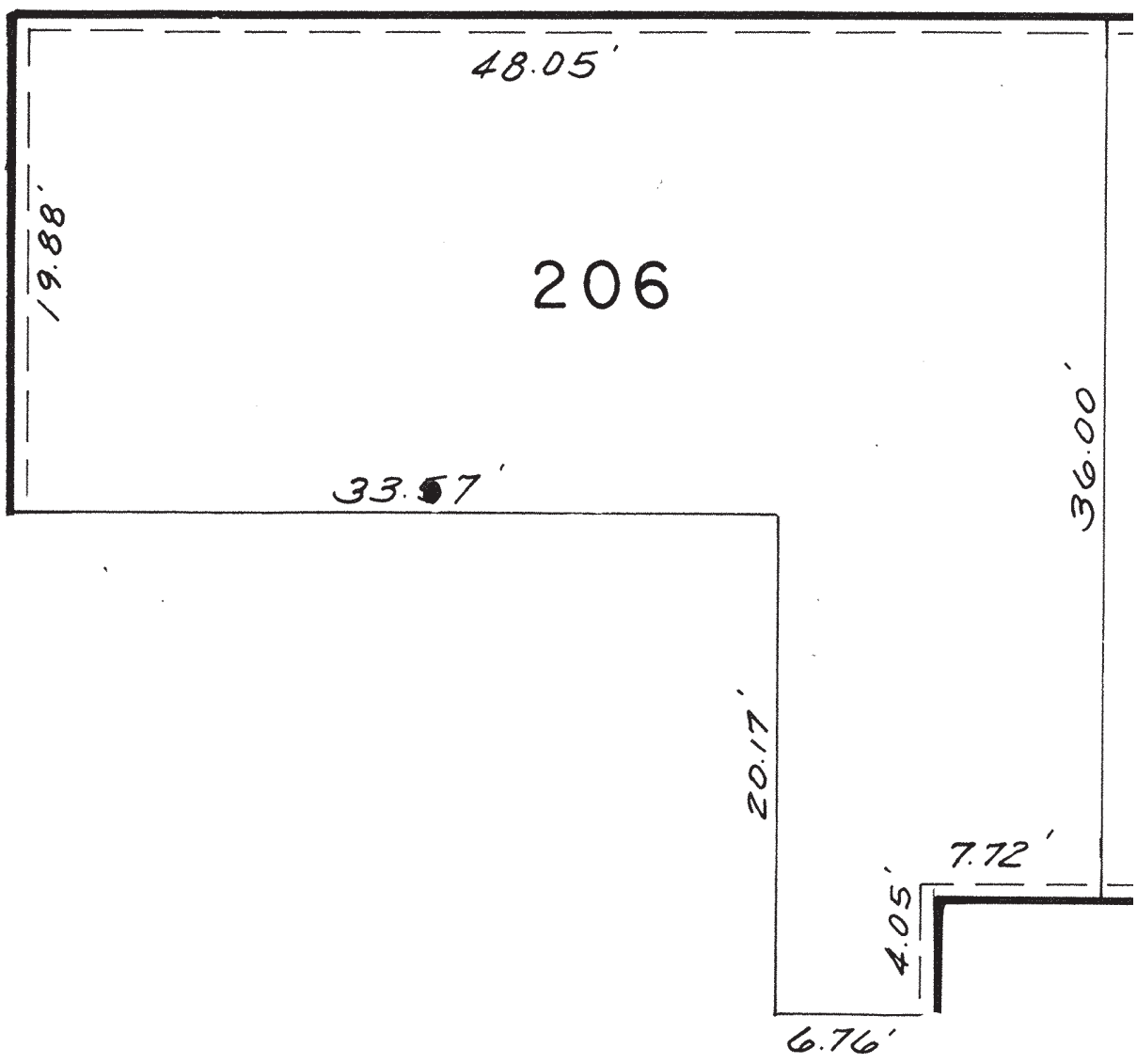
Demetree Global
941 W. Morse Bld | Winter Park, FL 32789
DemetreeGlobal.com



Contact us now for more information

RUSTY STOECKEL
BROKER/ASSOCIATE
407-422-8191
rusty@dresi.com

Demetree Global
941 W. Morse Blvd | Winter Park, FL 32789
DemetreeGlobal.com

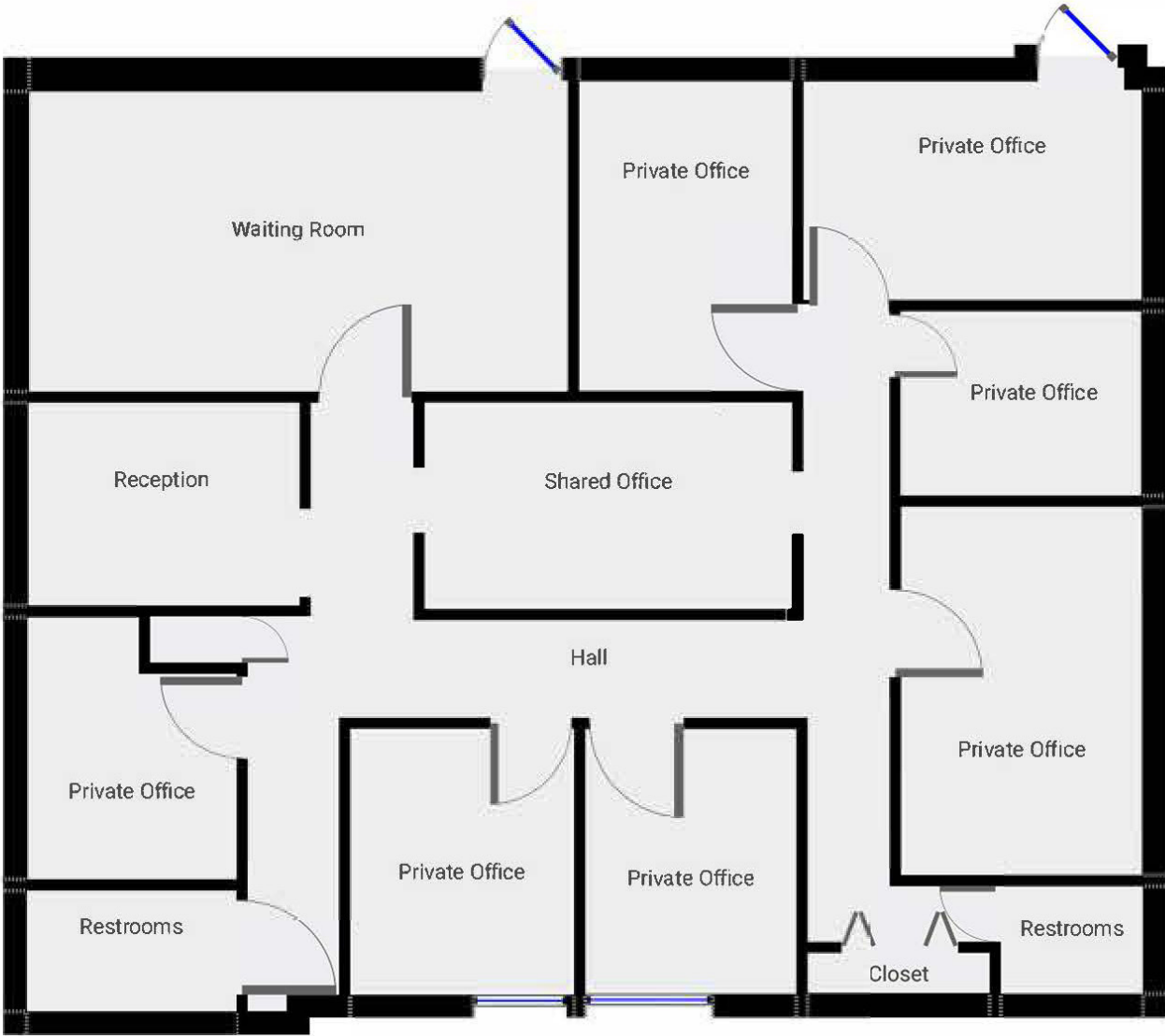


Contact us now for more information

RUSTY STOECKEL
BROKER/ASSOCIATE
407-422-8191
rusty@dresi.com

Demetree Global
941 W. Morse Bld | Winter Park, FL 32789
DemetreeGlobal.com

No warranty or representation, express or implied, is made as to the accuracy of the information contained herein, and same is submitted subject errors, omissions, change of price, rental or other conditions, withdrawal without notice, and to any special listing and conditions imposed by our principals.

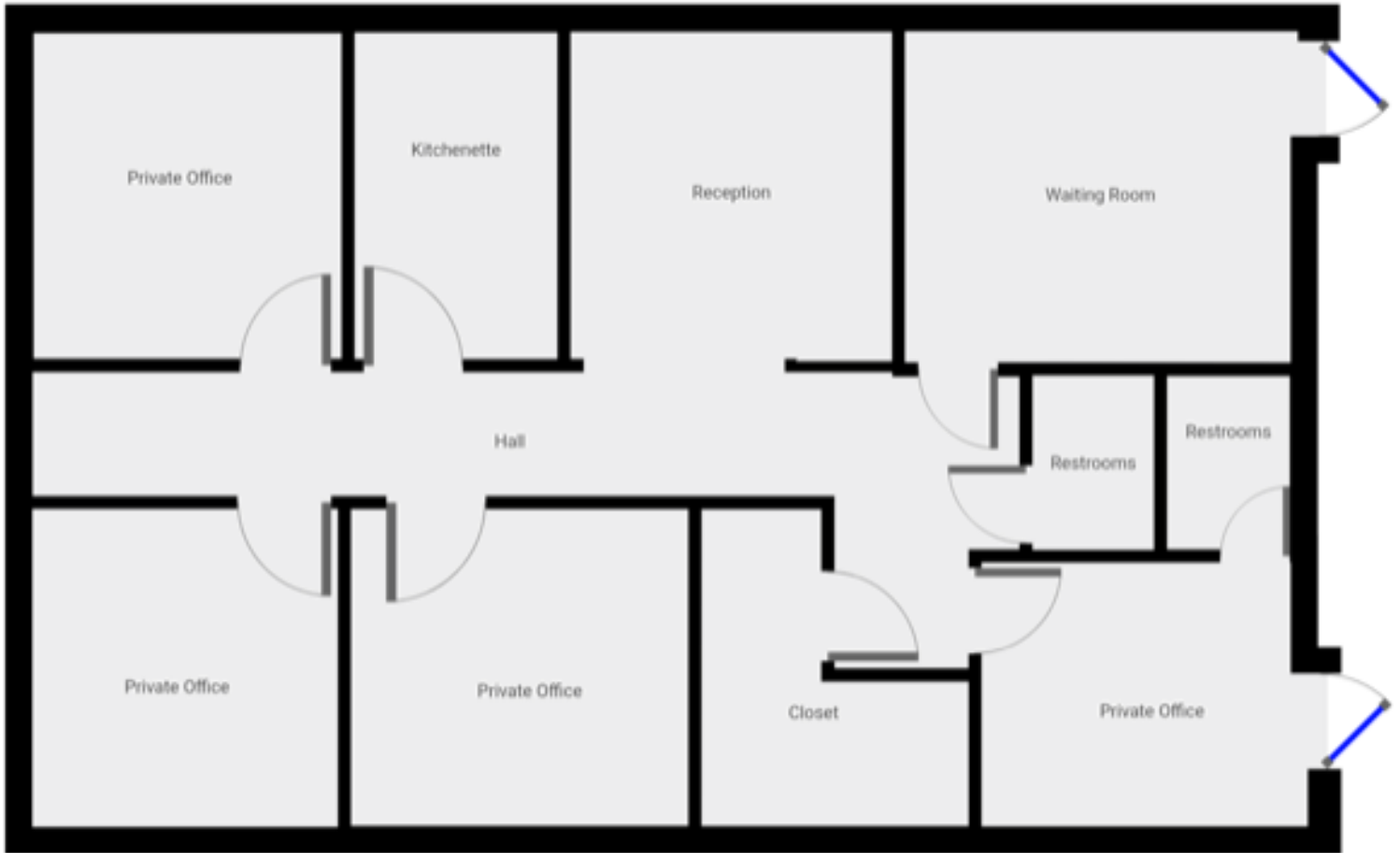


Contact us now for more information

RUSTY STOECKEL
BROKER/ASSOCIATE
407-422-8191
rusty@dresi.com

Demetree Global
941 W. Morse Bld | Winter Park, FL 32789
DemetreeGlobal.com

No warranty or representation, express or implied, is made as to the accuracy of the information contained herein, and same is submitted subject errors, omissions, change of price, rental or other conditions, withdrawal without notice, and to any special listing and conditions imposed by our principals.



Contact us now for more information

RUSTY STOECKEL
BROKER/ASSOCIATE
407-422-8191
rusty@dresi.com

Demetree Global
941 W. Morse Blvd | Winter Park, FL 32789
DemetreeGlobal.com