
728 Eighth Avenue

TIMES SQUARE
NEW YORK, NY

NEWMARK



CONCEPTUAL RENDERING

Property Details

Location

East block between West 45th and West 46th Streets

Approximate Size

Ground Floor	1,400 SF
Basement	1,400 SF
Second Floor	1,400 SF
Third Floor	800 SF
Fourth Floor	800 SF
Total	5,800 SF

Frontage

20 FT

Term

Negotiable

Possession

Arranged

Site Status

Currently Daniela Trattoria

Neighbors

Shake Shack, Bowlmor, Chick-Fil-A, IT'SUGAR (coming soon), Los Tacos No. 1, Carmine's, Junior's, Jolibee, Pink Taco (coming soon), The Ribbon, Smashburger, Raising Cane's (coming soon), Max Brenner (coming soon), Brooklyn Chop House (coming soon) and Gordon Ramsay Fish & Chips (coming soon)

Comments

Full building branding opportunity

Grandfathered giant marquee sign as well as multiple awning and flagpole signs

Fully built restaurant space with venting and gas in place

New direct deal with ownership

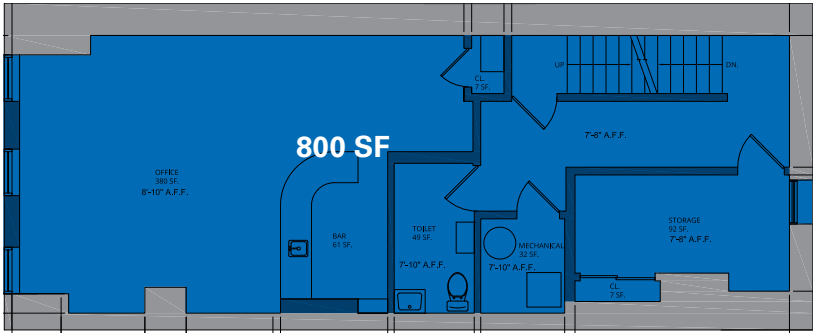
Steps from numerous Broadway Theaters, Times Square, Thousands of Hotel Rooms, Restaurant Row and the Port Authority Bus Terminal

Floor Plans

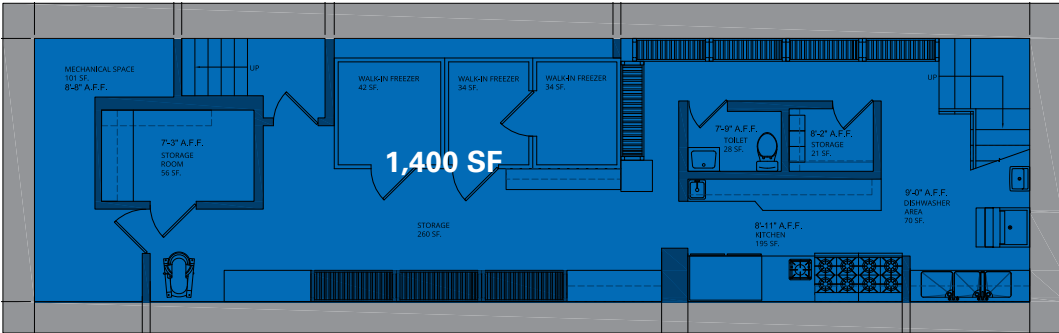
Ground Floor



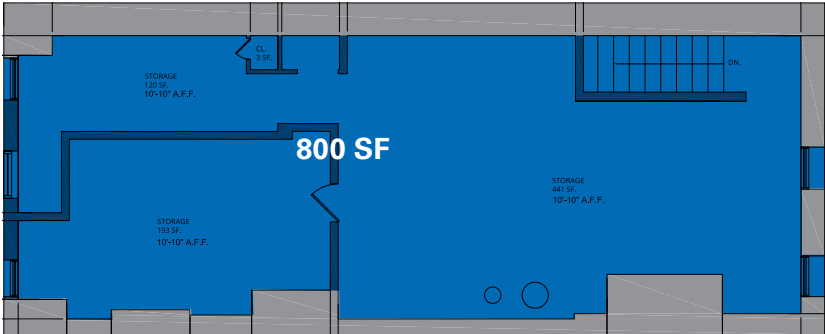
Third Floor



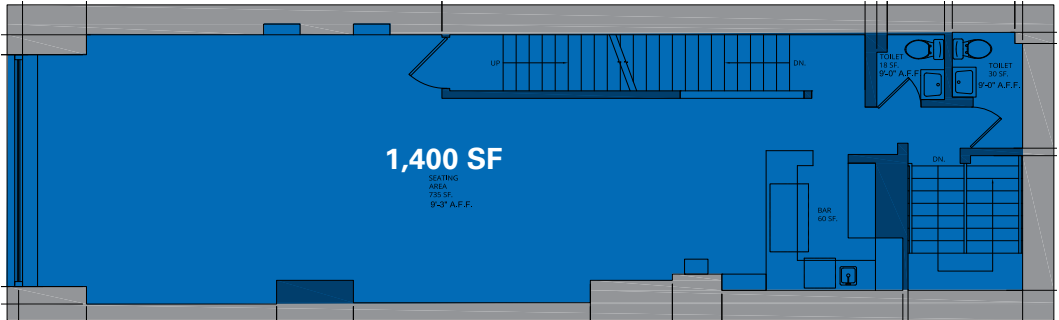
Basement



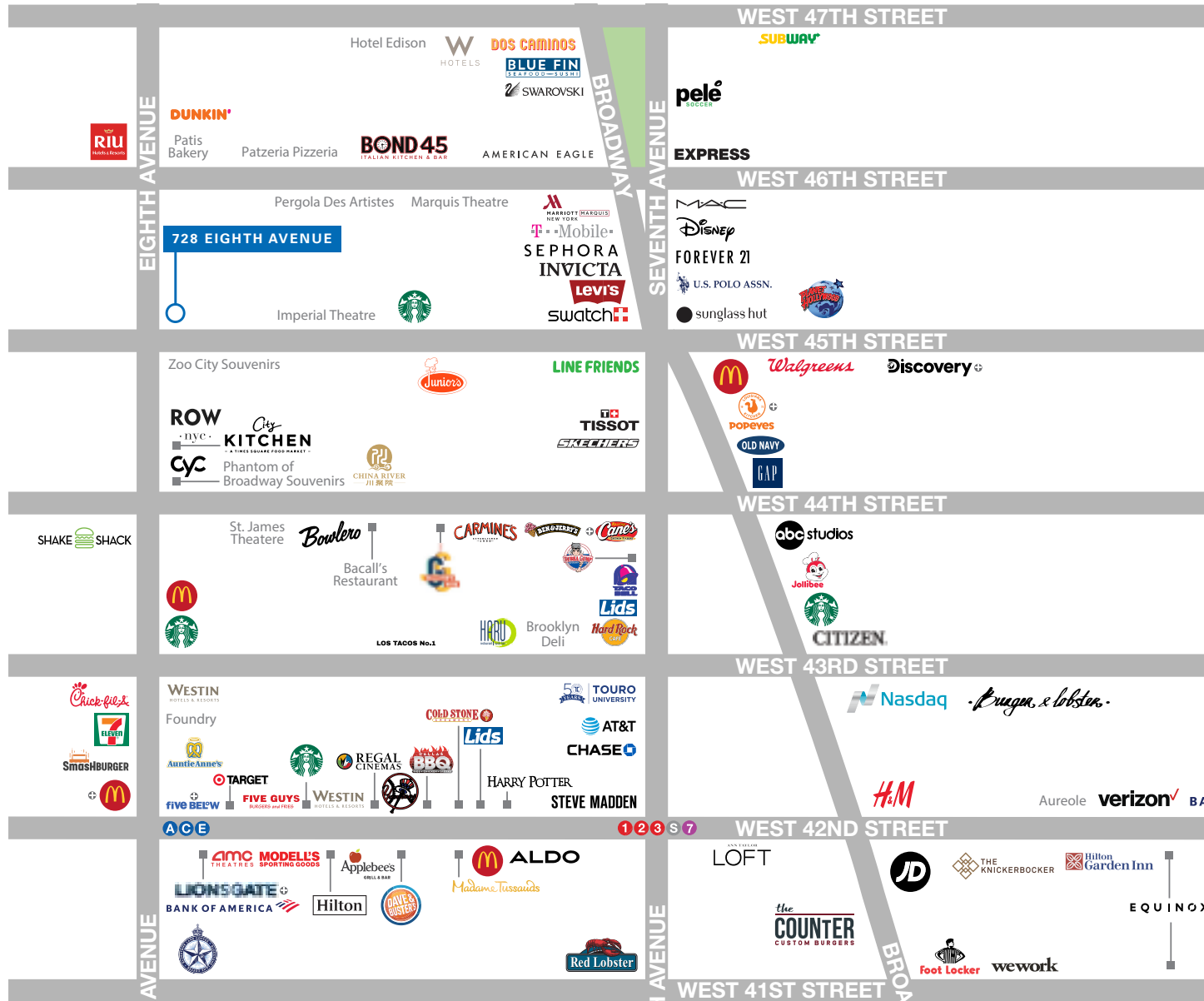
Fourth Floor



Second Floor



728 EIGHTH AVENUE



CONTACT

Andrew Stern
t 212-351-9353
andrew.stern@nrmk.com

Ravi Idani
t 212-916-2938
ravi.idani@nrmk.com

nrmk.com

COMING SOON