

1825 Leslie Road



1825 Leslie Road

- RSF: 1,375 +/-
- RATE: \$20.60 SF/YR
- LEASE EXPIRES
12/31/2028
- NNN



Ideally situated in the very high trafficked Gage & Leslie location, providing exceptional visibility! Unit is in a prime area!

1825 Leslie is available as a sublease & was recently remodeled in 2023. It boasts a modern, open floor plan that can accommodate a wide variety of business types. Includes a dedicated kitchen area and a convenient front service station, making it particularly well-suited for food-related businesses. Currently operating as a juice bar, the space offers potential for an excellent turnkey opportunity!



HARLEY HUSTON

COMMERCIAL BROKER

509-619-7347 MOBILE

509-735-0161 COMMERCIAL LEASING

HHUSTON@CROWNPROPERTYMANAGEMENT.COM

OLIVIA KELLY

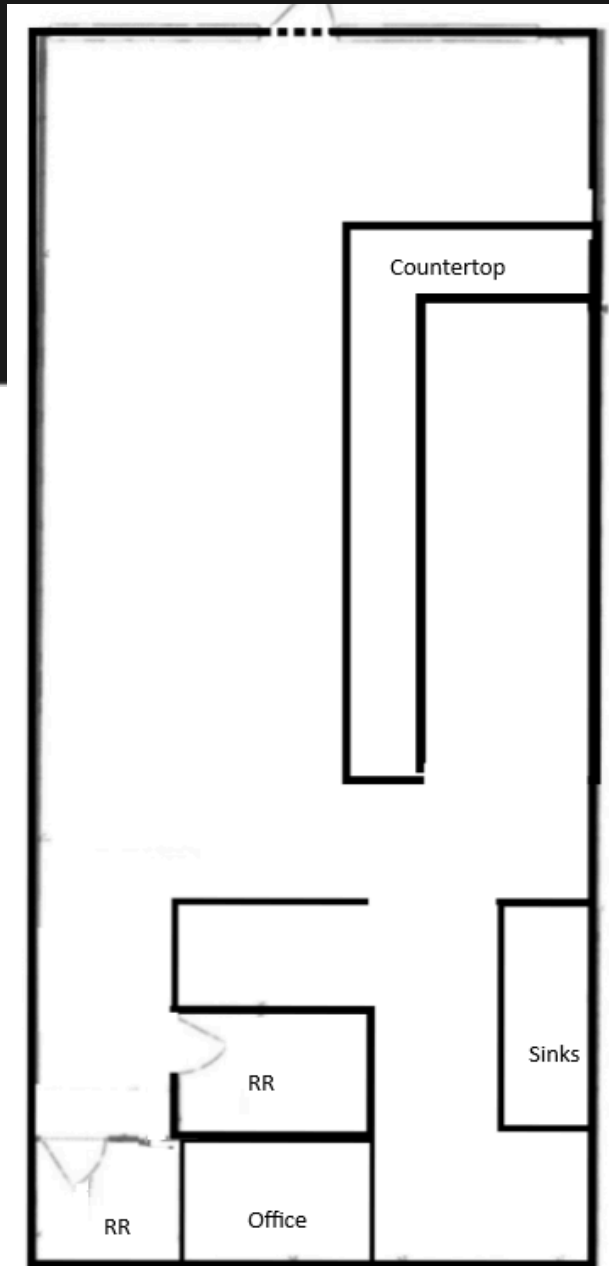
COMMERCIAL BROKERAGE ASSISTANT

509-957-2900 MOBILE

509-735-0161 COMMERCIAL LEASING

OKELLY@CROWNPROPERTYMANAGEMENT.COM

FOR LEASE: 1825 Leslie Road Richland, WA 99352



Disclaimer: The material contained herein is furnished solely for the purpose of considering the Leasing of the Property. Neither Crown Property Management nor the Owner make any representation or warranty, express or implied as to the accuracy or completeness of the information contained herein. The information contained herein is subject to change without notice and the recipient of these materials are advised and encouraged to conduct their own comprehensive review and analysis of the Property. The Owner expressly reserves the right, at it's sole discretion, to reject any or all expressions of interest to Lease the Property and to terminate negotiations with any entity, for any reason, at any time with or without notice.



CROWN PROPERTY MANAGEMENT
552 N. COLORADO ST. STE. 101
KENNEWICK, WA 99336
509-619-7347 OFFICE
CROWNCOMMERCIALREALESTATE.COM

HARLEY HUSTON
COMMERCIAL BROKER
509-619-7347 MOBILE
509-735-0161 COMMERCIAL LEASING
HHUSTON@CROWNPROPERTYMANAGEMENT.COM