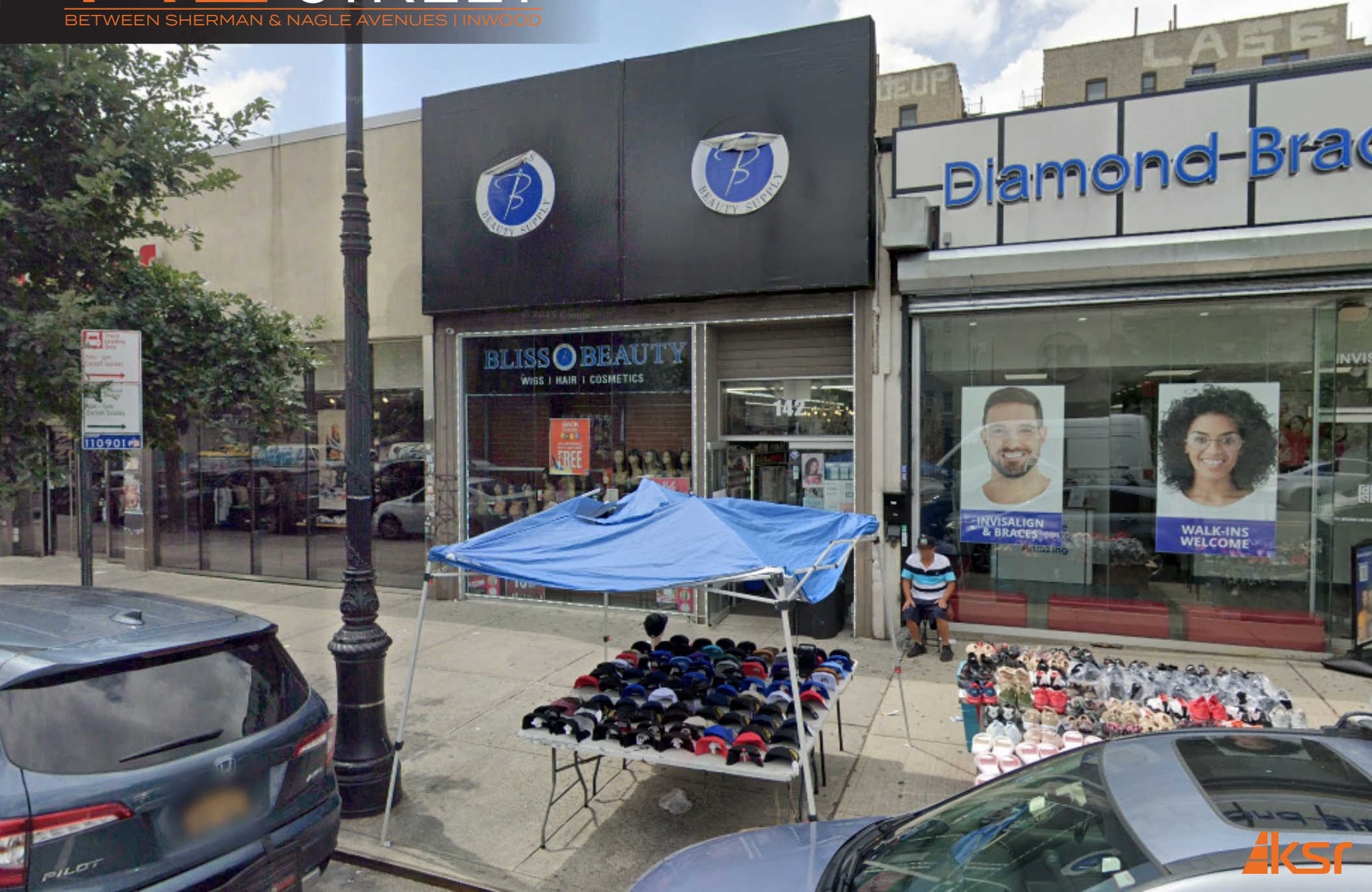




142 DYCKMAN STREET

BETWEEN SHERMAN & NAGLE AVENUES | INWOOD



142 DYCKMAN STREET

BETWEEN SHERMAN & NAGLE AVENUES | INWOOD

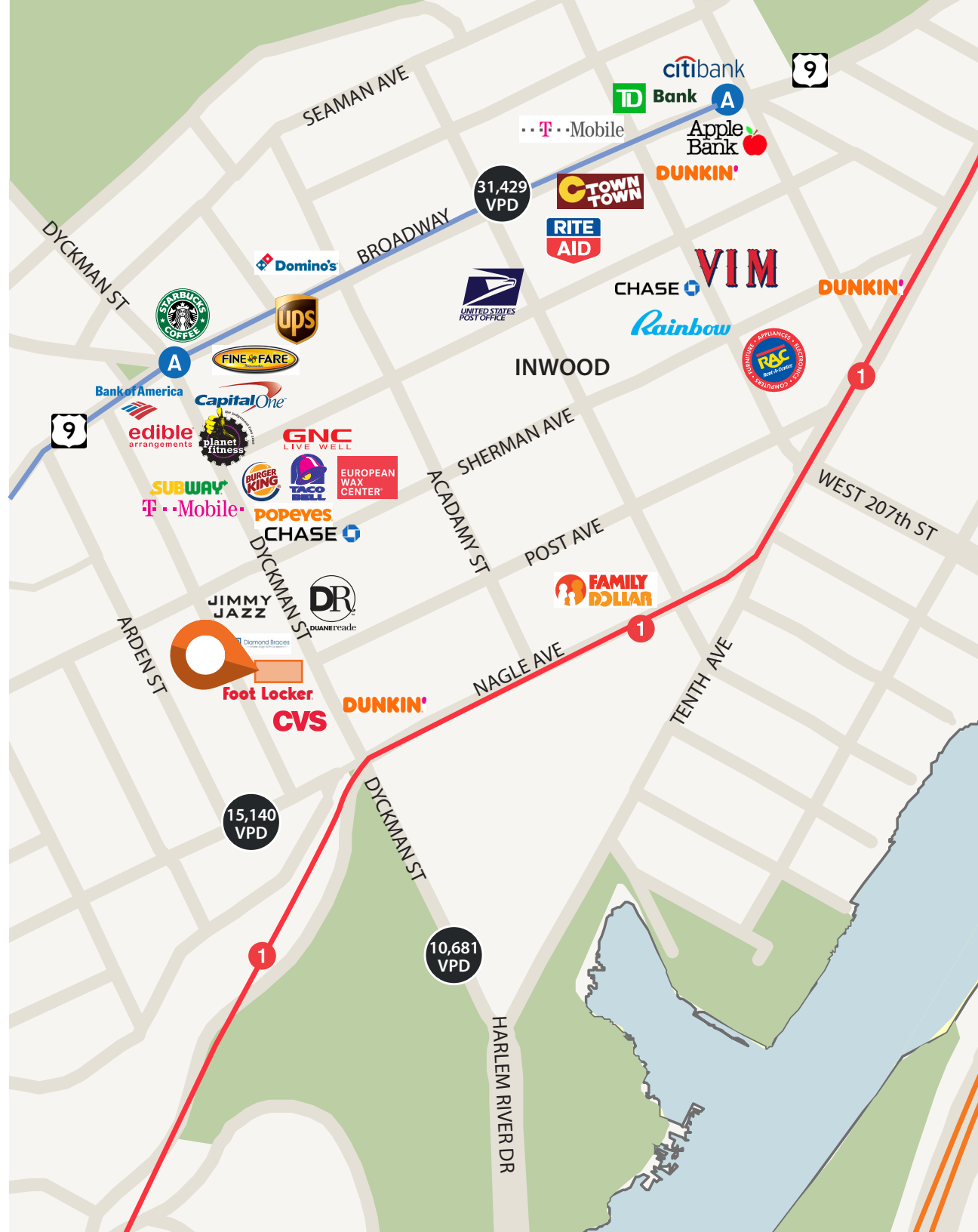
SIZE: 2,000 SF Ground Floor
FRONTAGE: 20'
CEILING HEIGHT: 12'
POSSESSION: ASAP
ASKING RENT: Upon Request
TRANSPORTATION:  

HIGHLIGHTS:

- Former *Bliss Beauty*
- High foot traffic area steps away from major subway lines and multiple bus stops
- Vibrant retail corridor surrounded by national tenants, independent retailers, and dining establishments
- Prime commercial space located in the heart of Inwood on bustling Dyckman Street
- Flexible layout ideal for retail, QSR, or service related business - customize to suit your tenant needs
- Dense residential neighborhood, home to a growing and diverse community with significant consumer spending power



All information supplied in this marketing presentation and/or flyer is from sources deemed reliable and is furnished subject to errors, omissions, modifications, removal of listings from sale/lease and to any listing condition. Any square footage, dimensions, floor plans and/or technical data set forth are approximations and are subject to further elaboration/confirmation.



142 DYCKMAN STREET

BETWEEN SHERMAN & NAGLE AVENUES | INWOOD

FOR MORE INFORMATION,
PLEASE CONTACT:

ORI MELLOUL

347.377.1392 | OMelloul@ksrny.com

SOLOMON SHARBY

718.986.7149 | SSharaby@ksrny.com

