



DOWNTOWN ST. PETERSBURG OFFICE SPACE FOR LEASE!

1401 5th Ave N, St Petersburg, FL 33705

EXECUTIVE SUMMARY



OFFERING SUMMARY

Available SF:	13,623 SF
Lease Rate:	\$14.00 SF/yr (NNN)
Lot Size:	0.69 Acres
Buildout Available	Yes
Year Built:	1977
Building Size:	13,938 SF
Renovated:	2022
Zoning:	ALE
Market:	St. Petersburg
Submarket:	Tampa

PROPERTY OVERVIEW

AMAZING OFFICE BUILDING IN DOWNTOWN ST. PETERSBURG, FL FOR LEASE. LOCATED IN THE HISTORIC UPTOWN NEIGHBORHOOD! THE PROPERTY IS PERFECT FOR OFFICE, RETAIL, OR MEDICAL USE AS IT CONTAINS OVER 20 OFFICE SUITES, LARGE CORRIDORS, AND AMPLE SPACE FOR CONFERENCE ROOMS. THE OWNER IS WILLING TO ALLOW FOR BUILDOUT FOR ANY USE. THE SPACE CAN BE DIVIDED INTO TWO SPACES ONE ON EACH FLOOR.

LEASE TERMS ARE AS FOLLOWS: 13,623 RENTABLE SF, \$14\$ SF/YR, PURE NNN LEASE, 5-20 YEAR TERM, BUILDOUT INCLUDED. THE TENANT IS RESPONSIBLE FOR ALL EXPENSES AT THE PROPERTY.

AVAILABLE SPACES

SPACE	LEASE RATE	LEASE TYPE	SIZE (SF)
1401 5th Ave N	\$14.00 SF/yr	MEDICAL/OFFICE/RETIAL	6,900 - 13,623 SF

David Rosenthal

813.882.0884

david@grimaldicommercialrealty.com

Kari L. Grimaldi/ Broker

813.882.0884

kari@grimaldicommercialrealty.com

The information contained in this offering memorandum has been obtained from sources we believe reliable; however, Grimaldi Commercial Realty Corp. has not verified, and will not verify, any of the information contained herein, nor has Grimaldi Commercial Realty Corp. conducted any investigation regarding these matters and makes no warranty or representation whatsoever regarding the accuracy or completeness of the information provided. All potential buyers and tenants must take appropriate measures to verify all of the information set forth herein.



DOWNTOWN ST. PETERSBURG OFFICE SPACE FOR LEASE!

1401 5th Ave N, St Petersburg, FL 33705

COMPLETE HIGHLIGHTS

LEASE HIGHLIGHTS

- 13,629 OF AVAILABLE SPACE FOR LEASE IN DOWNTOWN ST. PETE!
- LOCATED IN THE HEART OF HISTORIC UPTOWN IN ST. PETERSBURG, FL!
- \$14 SF/YR & BUILDOUT AVAILABLE!
- OVER 40 PARKING SPACES AND SIGNAGE FACING 5TH AVE N!
- BUILDOUT AVAILABLE FOR ALL NEW TENANTS!
- PURE NNN LEASE, THE TENANT IS RESPONSIBLE FOR ALL EXPENSES AT THE PROPERTY!
- ONLY 30 FEET FROM ST. ANTHONY'S HOSPITAL!
- 15 MINUTES FROM SOUTH TAMPA AND TAMPA INTERNATIONAL AIRPORT!
- DIVISIBLE BY FLOOR (6,900 S/F) PER FLOOR
- TERMS NEGOTIABLE!



David Rosenthal

813.882.0884

david@grimaldicommercialrealty.com

Kari L. Grimaldi/ Broker

813.882.0884

kari@grimaldicommercialrealty.com

The information contained in this offering memorandum has been obtained from sources we believe reliable; however, Grimaldi Commercial Realty Corp. has not verified, and will not verify, any of the information contained herein, nor has Grimaldi Commercial Realty Corp. conducted any investigation regarding these matters and makes no warranty or representation whatsoever regarding the accuracy or completeness of the information provided. All potential buyers and tenants must take appropriate measures to verify all of the information set forth herein.



DOWNTOWN ST. PETERSBURG OFFICE SPACE FOR LEASE!

1401 5th Ave N, St Petersburg, FL 33705

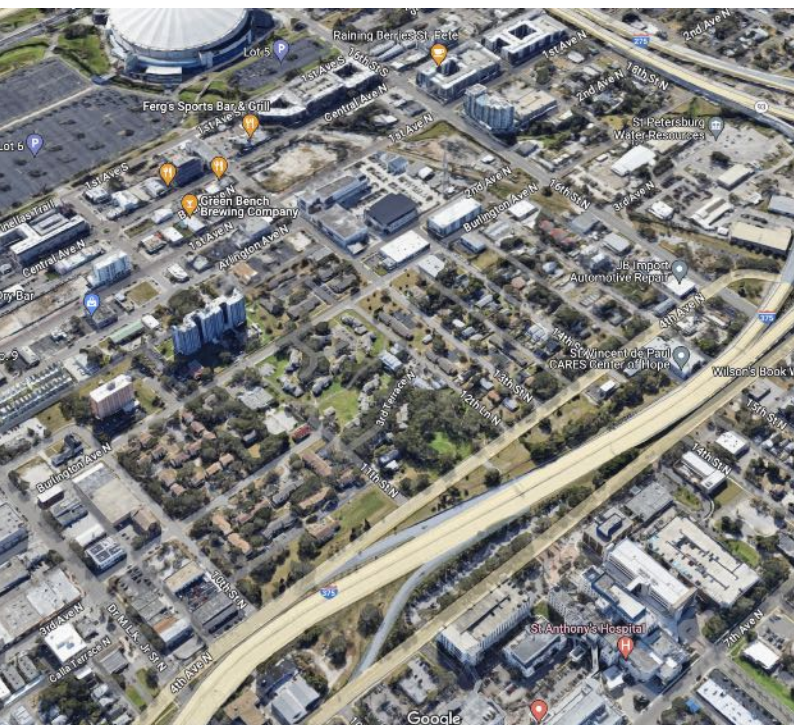
PROPERTY DESCRIPTION

PROPERTY DETAILS

BEAUTIFUL TWO-STORY OFFICE BUILDING IN THE HEART OF HISTORIC UPTOWN IN DOWNTOWN ST. PETERSBURG. THE BUILDING HAS OVER 13,000 S/F AVAILABLE FOR RENT, WITH BUILD-OUT AVAILABLE TO ANY NEW TENANTS. THE PROPERTY SITS IN AN AMAZING LOCATION DIRECTLY NEXT TO ST ANTHONY'S HOSPITAL, THE #1 HOSPITAL IN ST PETERSBURG, AND IS LISTED IN THE TOP FEW HOSPITALS IN THE STATE. ST ANTHONY'S CONTINUES TO GROW AND IS COMPLETING A \$158 MILLION EXPANSION.

THE PROPERTY SITS DIRECTLY IN THE MIDDLE OF THE LARGE MEDICAL CORRIDOR OF DOWNTOWN ST. PETE. THIS AMAZING SITE, HAS TWO FLOORS WITH OVER 6,900 SF OF RENTABLE SPACE ON EACH LEVEL. THE PROPERTY HAS AN UPDATED ROOF AS WELL AS PLUMBING AND HVAC UPDATES IN THE PAST 5 YEARS. THE BUILDING HAS OVER 40 PARKING SPACES IN THE FRONT PARKING LOT AND A GATED LOT IN THE REAR WITH PYLON SIGNAGE FACING 5TH AVE N. THE PROPERTIES ENTRANCE IS LESS THAN A MILE FROM INTERSTATE I-275 CONNECTING ST. PETERSBURG WITH TAMPA, FL!

THE PROPERTY IS PERFECT FOR OFFICE, RETAIL OR MEDICAL USE AS IT CONTAINS OVER 20 OFFICE SUITES, LARGE CORRIDORS, AND AMPLE SPACE FOR CONFERENCE ROOMS. THE OWNER IS WILLING TO ALLOW FOR BUILDOUT FOR ANY USE. THE SPACE CAN BE DIVIDED BY 1ST AND 2ND FLOOR. LEASE TERMS ARE AS FOLLOWS: 13,623 RENTABLE SF, 14\$ P/S/F, PURE NNN LEASE, 5-20 YEAR TERM, BUILDOUT INCLUDED. TENANT IS RESPONSIBLE FOR ALL EXPENSES AT THE PROPERTY.



David Rosenthal

813.882.0884

david@grimaldicommercialrealty.com

Kari L. Grimaldi/ Broker

813.882.0884

kari@grimaldicommercialrealty.com

The information contained in this offering memorandum has been obtained from sources we believe reliable; however, Grimaldi Commercial Realty Corp. has not verified, and will not verify, any of the information contained herein, nor has Grimaldi Commercial Realty Corp. conducted any investigation regarding these matters and makes no warranty or representation whatsoever regarding the accuracy or completeness of the information provided. All potential buyers and tenants must take appropriate measures to verify all of the information set forth herein.



DOWNTOWN ST. PETERSBURG OFFICE SPACE FOR LEASE!

1401 5th Ave N, St Petersburg, FL 33705

PROPERTY DETAILS

Lease Rate	\$14.00 SF/YR
------------	----------------------

PROPERTY INFORMATION

Property Type	Office
Property Subtype	Office Building
Zoning	ALE
Lot Size	30,236 SF
APN #	13-31-16-10062-000-0680
Lot Depth	1,200 ft
Amenities	13,000 SF OF RENTABLE SPACE, 2 FLOORS, OVER 20 OFFICE SUITES, BUILD OUT AVAILABLE!
Waterfront	No
Power	Yes

LOCATION INFORMATION

Building Name	DOWNTOWN ST. PETERSBURG OFFICE SPACE FOR LEASE!
Street Address	1401 5th Ave N
City, State, Zip	St Petersburg, FL 33705
County	Pinellas
Market	St. Petersburg
Sub-market	Tampa
Signal Intersection	Yes
Road Type	Paved
Market Type	Large
Nearest Highway	I-275
Nearest Airport	TAMPA INTERNATIONAL AIRPORT

PARKING & TRANSPORTATION

Parking Type	Surface
Number of Parking Spaces	40

BUILDING INFORMATION

Building Size	13,938 SF
Building Class	B
Number of Floors	2
Average Floor Size	6,996 SF
Year Built	1977
Year Last Renovated	2022
Gross Leasable Area	13,623 SF
Construction Status	Existing
Framing	BLOCK
Condition	Excellent
Free Standing	Yes
Number of Buildings	1

UTILITIES & AMENITIES

Handicap Access	Yes
Elevators	1, IN GOOD WORKING CONDITION.
Freight Elevator	Yes
Number of Elevators	1
Central HVAC	Yes
HVAC	NEW HVAC UNITS PUT IN IN 2020!
Broadband	Cable
Centrix Equipped	Yes
Restrooms	8.5
Landscaping	YES
Gas / Propane	Yes

David Rosenthal

813.882.0884

david@grimaldicommercialrealty.com

Kari L. Grimaldi/ Broker

813.882.0884

kari@grimaldicommercialrealty.com

The information contained in this offering memorandum has been obtained from sources we believe reliable; however, Grimaldi Commercial Realty Corp. has not verified, and will not verify, any of the information contained herein, nor has Grimaldi Commercial Realty Corp. conducted any investigation regarding these matters and makes no warranty or representation whatsoever regarding the accuracy or completeness of the information provided. All potential buyers and tenants must take appropriate measures to verify all of the information set forth herein.



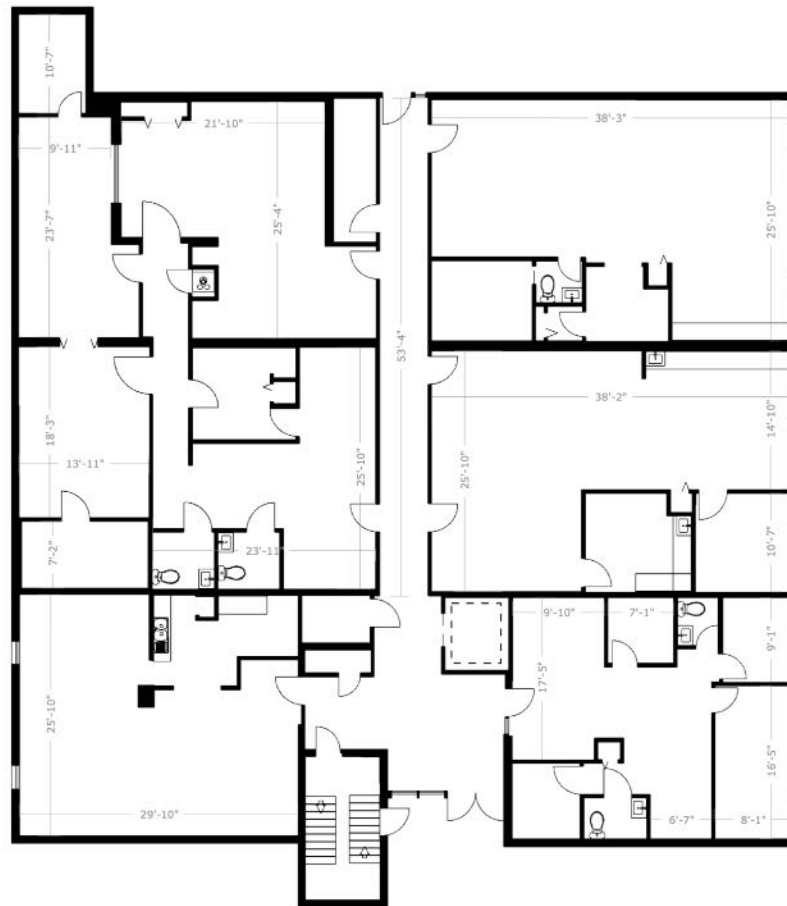
DOWNTOWN ST. PETERSBURG OFFICE SPACE FOR LEASE!

1401 5th Ave N, St Petersburg, FL 33705

FLOOR PLAN 1SR FLOOR

1401 5th Ave N

St Petersburg, FL 33705



1st Floor

DISCLAIMER: THIS FLOORPLAN IS PROVIDED WITHOUT WARRANTY OF ANY KIND. FLOOR PLAN NINJA DISCLAIMS ANY WARRANTY INCLUDING, WITHOUT LIMITATION, SATISFACTORY OR ACCURACY OF DIMENSIONS. WE RESERVE THE RIGHT TO USE ALL FLOOR PLANS AND RENDERINGS FOR MARKETING PURPOSES

David Rosenthal

813.882.0884

david@grimaldicommercialrealty.com

Kari L. Grimaldi/ Broker

813.882.0884

kari@grimaldicommercialrealty.com

The information contained in this offering memorandum has been obtained from sources we believe reliable; however, Grimaldi Commercial Realty Corp. has not verified, and will not verify, any of the information contained herein, nor has Grimaldi Commercial Realty Corp. conducted any investigation regarding these matters and makes no warranty or representation whatsoever regarding the accuracy or completeness of the information provided. All potential buyers and tenants must take appropriate measures to verify all of the information set forth herein.



DOWNTOWN ST. PETERSBURG OFFICE SPACE FOR LEASE!

1401 5th Ave N, St Petersburg, FL 33705

FLOOR PLAN 2ND FLOOR

1401 5th Ave N
St Petersburg, FL 33705



2nd Floor

DISCLAIMER: THIS FLOORPLAN IS PROVIDED WITHOUT WARRANTY OF ANY KIND. FLOOR PLAN NINJA DISCLAIMS ANY WARRANTY INCLUDING, WITHOUT LIMITATION, SATISFACTORY OR ACCURACY OF DIMENSIONS. WE RESERVE THE RIGHT TO USE ALL FLOOR PLANS AND RENDERINGS FOR MARKETING PURPOSES

David Rosenthal

813.882.0884

david@grimaldicommercialrealty.com

Kari L. Grimaldi/ Broker

813.882.0884

kari@grimaldicommercialrealty.com

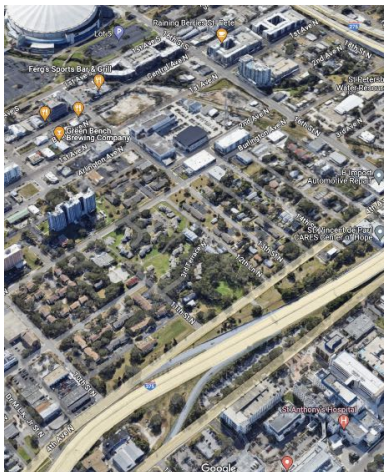
The information contained in this offering memorandum has been obtained from sources we believe reliable; however, Grimaldi Commercial Realty Corp. has not verified, and will not verify, any of the information contained herein, nor has Grimaldi Commercial Realty Corp. conducted any investigation regarding these matters and makes no warranty or representation whatsoever regarding the accuracy or completeness of the information provided. All potential buyers and tenants must take appropriate measures to verify all of the information set forth herein.



DOWNTOWN ST. PETERSBURG OFFICE SPACE FOR LEASE!

1401 5th Ave N, St Petersburg, FL 33705

ADDITIONAL PHOTOS



h Ave N
FL 33705



DISCLAIMER: THIS FLOORPLAN IS PROVIDED WITHOUT WARRANTY OF ANY KIND. FLOOR PLAN AREA DOES NOT REPRESENT, IMPLY OR GUARANTEE THE ACCURACY OF DIMENSIONS. WE RESERVE THE RIGHT TO USE ALL FLOOR PLANS AS SHOWN.

h Ave N
FL 33705



DISCLAIMER: THIS FLOORPLAN IS PROVIDED WITHOUT WARRANTY OF ANY KIND. FLOOR PLAN AREA DOES NOT REPRESENT, IMPLY OR GUARANTEE THE ACCURACY OF DIMENSIONS. WE RESERVE THE RIGHT TO USE ALL FLOOR PLANS AS SHOWN.

David Rosenthal

813.882.0884

david@grimaldicommercialrealty.com

Kari L. Grimaldi/ Broker

813.882.0884

kari@grimaldicommercialrealty.com

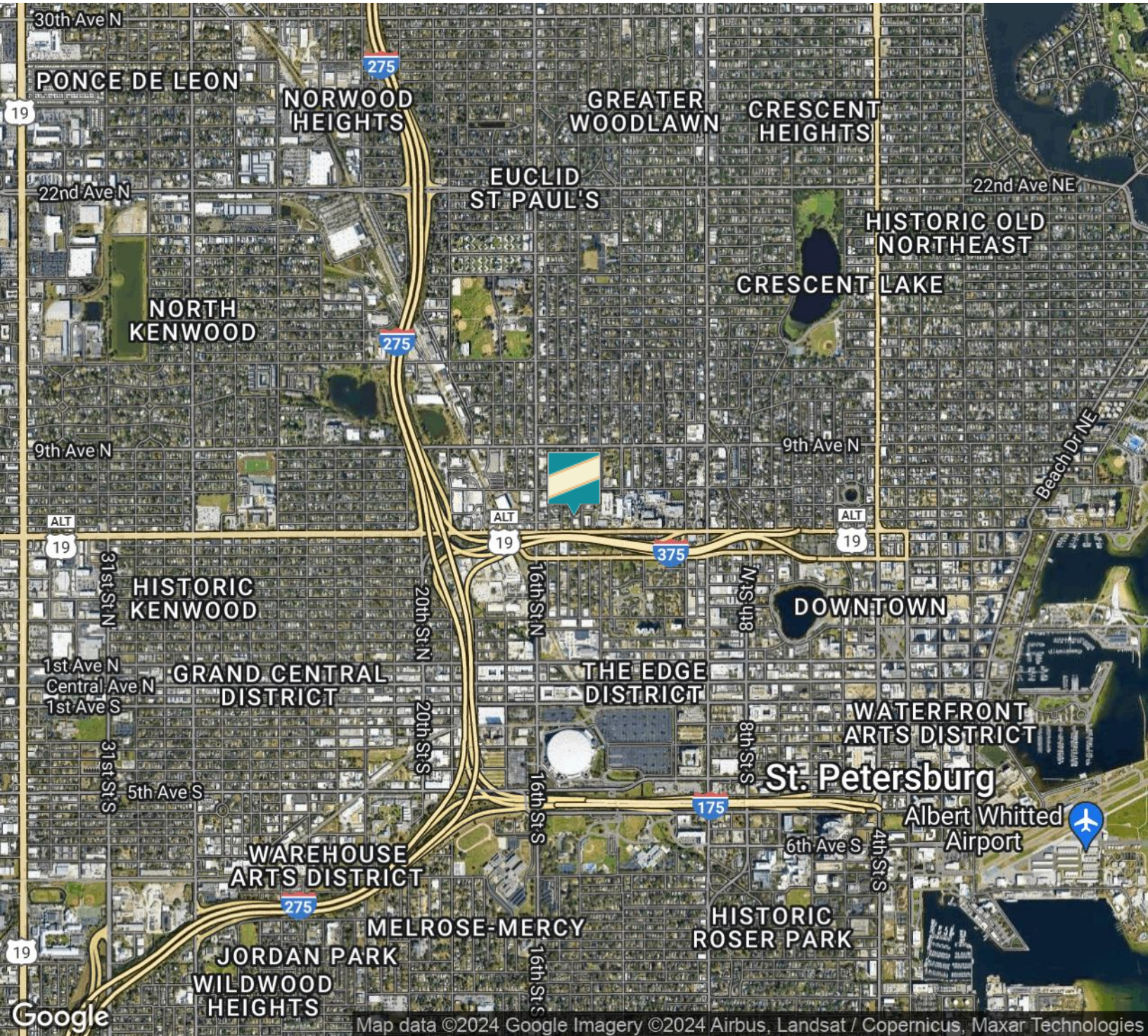
The information contained in this offering memorandum has been obtained from sources we believe reliable; however, Grimaldi Commercial Realty Corp. has not verified, and will not verify, any of the information contained herein, nor has Grimaldi Commercial Realty Corp. conducted any investigation regarding these matters and makes no warranty or representation whatsoever regarding the accuracy or completeness of the information provided. All potential buyers and tenants must take appropriate measures to verify all of the information set forth herein.



DOWNTOWN ST. PETERSBURG OFFICE SPACE FOR LEASE!

1401 5th Ave N, St Petersburg, FL 33705

LOCATION MAP



David Rosenthal

813.882.0884

david@grimaldicommercialrealty.com

Kari L. Grimaldi/ Broker

813.882.0884

kari@grimaldicommercialrealty.com

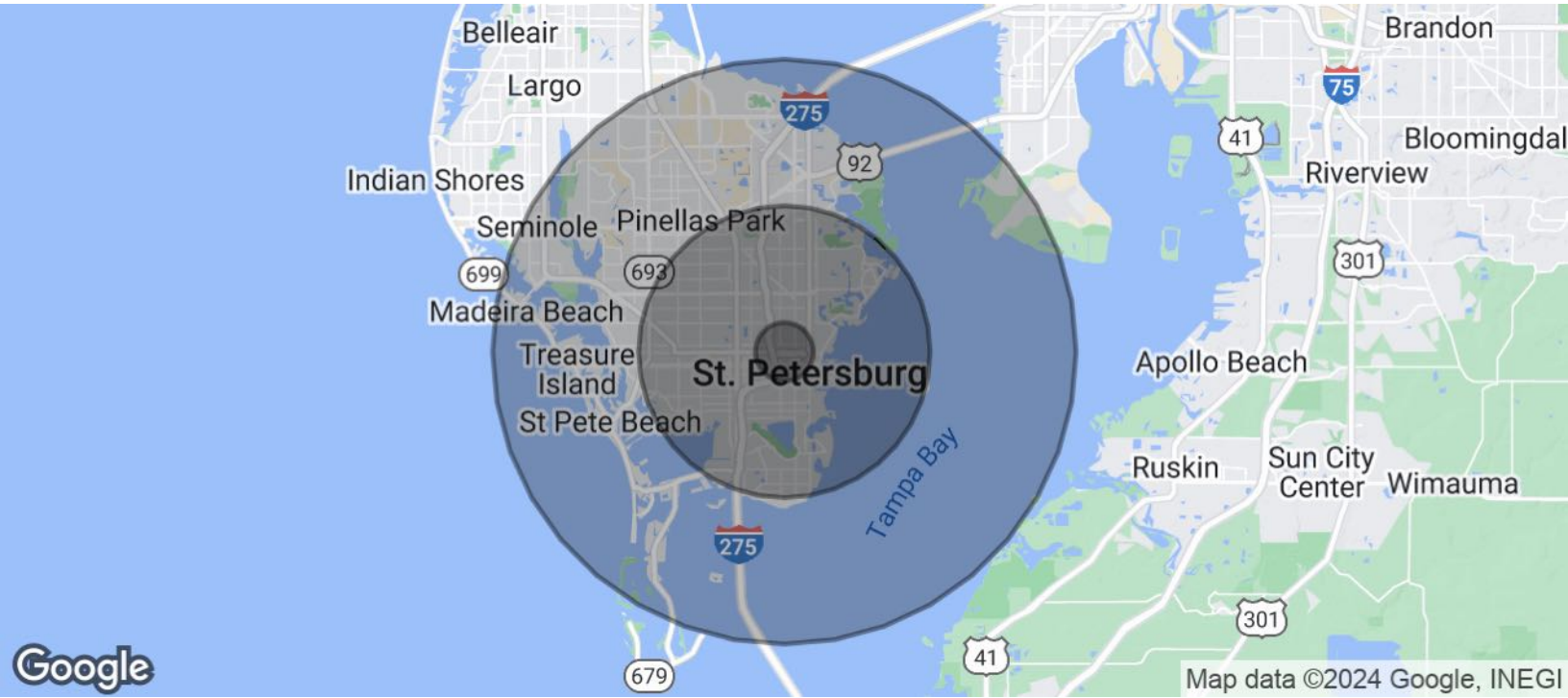
The information contained in this offering memorandum has been obtained from sources we believe reliable; however, Grimaldi Commercial Realty Corp. has not verified, and will not verify, any of the information contained herein, nor has Grimaldi Commercial Realty Corp. conducted any investigation regarding these matters and makes no warranty or representation whatsoever regarding the accuracy or completeness of the information provided. All potential buyers and tenants must take appropriate measures to verify all of the information set forth herein.



DOWNTOWN ST. PETERSBURG OFFICE SPACE FOR LEASE!

1401 5th Ave N, St Petersburg, FL 33705

DEMOGRAPHICS MAP & REPORT



POPULATION	1 MILE	5 MILES	10 MILES
Total Population	15,648	263,475	471,484
Average Age	43.8	43.9	45.6
Average Age (Male)	45.2	43.2	44.5
Average Age (Female)	42.8	44.6	46.8
HOUSEHOLDS & INCOME	1 MILE	5 MILES	10 MILES
Total Households	10,380	134,735	252,883
# of Persons per HH	1.5	2.0	1.9
Average HH Income	\$55,362	\$65,863	\$64,681
Average House Value	\$264,579	\$242,897	\$242,288

2020 American Community Survey (ACS)

David Rosenthal

813.882.0884

david@grimaldicommercialrealty.com

Kari L. Grimaldi/ Broker

813.882.0884

kari@grimaldicommercialrealty.com

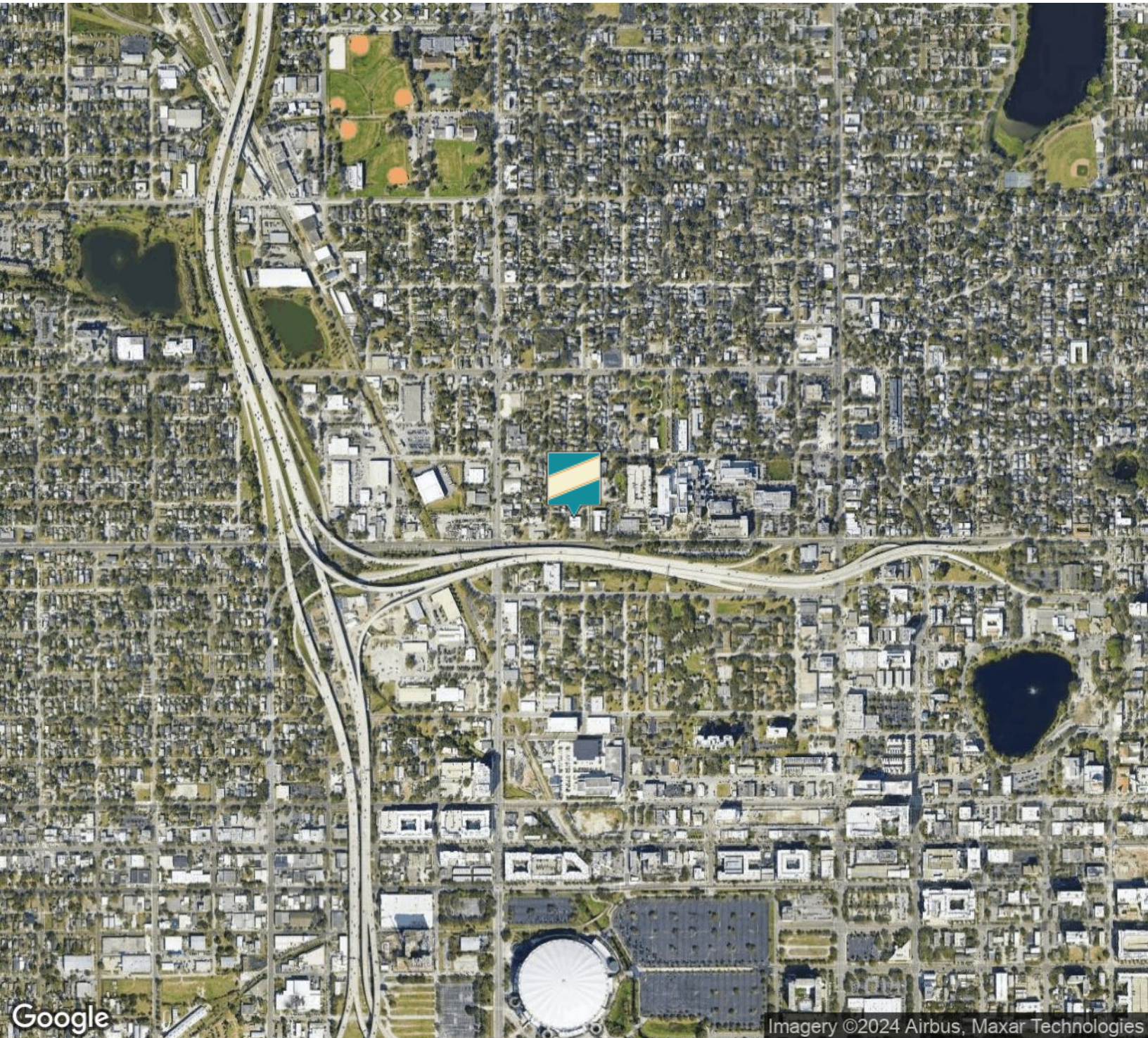
The information contained in this offering memorandum has been obtained from sources we believe reliable; however, Grimaldi Commercial Realty Corp. has not verified, and will not verify, any of the information contained herein, nor has Grimaldi Commercial Realty Corp. conducted any investigation regarding these matters and makes no warranty or representation whatsoever regarding the accuracy or completeness of the information provided. All potential buyers and tenants must take appropriate measures to verify all of the information set forth herein.



DOWNTOWN ST. PETERSBURG OFFICE SPACE FOR LEASE!

1401 5th Ave N, St Petersburg, FL 33705

AERIAL MAP



David Rosenthal

813.882.0884

david@grimaldicommercialrealty.com

Kari L. Grimaldi/ Broker

813.882.0884

kari@grimaldicommercialrealty.com

The information contained in this offering memorandum has been obtained from sources we believe reliable; however, Grimaldi Commercial Realty Corp. has not verified, and will not verify, any of the information contained herein, nor has Grimaldi Commercial Realty Corp. conducted any investigation regarding these matters and makes no warranty or representation whatsoever regarding the accuracy or completeness of the information provided. All potential buyers and tenants must take appropriate measures to verify all of the information set forth herein.



DOWNTOWN ST. PETERSBURG OFFICE SPACE FOR LEASE!

1401 5th Ave N, St Petersburg, FL 33705

ADVISOR BIO & CONTACT 1

DAVID ROSENTHAL

V.P. Commercial Sales



115 W Bearss Ave
Tampa, FL 33613
T 813.882.0884
C 813.245.7333
david@grimaldicommercialrealty.com

PROFESSIONAL BACKGROUND

David began his career at Ernst & Young, David serving as a Big Four Accountant, focusing on client services and analyzing Financial Statements. Before joining Grimaldi Commercial Realty, David worked with many local Real Estate Investment Trusts, learning the financial side of the Real Estate market.

Areas of Expertise:

Multifamily
Retail Sales & Leases
Financial Planning
Real Estate Investment Trusts
Dividend Reinvestment Plans & Dividend Payout Ratios
Seller and Investor Financing
Contract negotiations and due diligence
Investment & Financial Analysis
Property Valuation

EDUCATION

David graduated from Tulane University in New Orleans, Louisiana, where he received a Bachelor's in Finance and a Masters in Accounting. A Tampa native since 1991, David attended Tampa Preparatory High School in Downtown Tampa where he played Soccer, Basketball, and ran Cross Country. When he is not working, David enjoys watching sports, working out and playing golf.

MEMBERSHIPS & AFFILIATIONS

David is an outgoing individual whose drive and passion are evident in his persistence to provide outstanding service. His business is built on: Dedication, Communication, Determination, and Trust while embodying the ability to cater and adapt to all of his client's Real Estate needs.

David Rosenthal

813.882.0884

david@grimaldicommercialrealty.com

Kari L. Grimaldi/ Broker

813.882.0884

kari@grimaldicommercialrealty.com



DOWNTOWN ST. PETERSBURG OFFICE SPACE FOR LEASE!

1401 5th Ave N, St Petersburg, FL 33705

ADVISOR BIO & CONTACT 2

KARI L. GRIMALDI/ BROKER

President



115 W Bearss Ave
Tampa, FL 33613
T 813.882.0884
C 813.376.3386
kari@grimaldicommercialrealty.com
FL #BK3076744

PROFESSIONAL BACKGROUND

Kari Grimaldi is the Managing Broker/President of Grimaldi Commercial Realty Corp. and commercial real estate expert. Kari quickly climbed the ranks of who's who in Tampa Bay Area Commercial Real Estate to become a Top Producer. Learning and joining the family business at an early age, Kari understands the importance of networking and building relationships, and has accumulated 20+ years of experience and in-depth knowledge to execute and navigate commercial real estate transactions for Sellers, Buyers, and Landlords/Tenants from inception to closing. Kari has an extensive resume with some of the highlights listed below:

Crexo Platinum Broker Award Winner

Areas of Expertise:

Office and Build-to-Suit Sales & Leasing
Medical Office Sales
Retail Sales
Industrial Sales
Multifamily Investments
Single NNN National Investments
Land & Commercial Development
Foreign Investors & Investment Specialist
Seller Finance and Creative Financing
1031 & Reverse Exchanges
Short Sales & Distressed/Bank-owned assets

As a commercial real estate owner and investor herself, Kari knows first hand how to guide others through the process, and negotiate and close transactions successfully. Kari has a vast portfolio of closed transactions in all sectors of the commercial market, and is a multi-million dollar sales producer.

EDUCATION

A Florida native, Kari earned her Bachelors at University of Florida in Management and Psychology, and a Masters at University of South Florida. A consummate professional, Kari is continually educating herself on the latest economic and market trends with continuing education, seminars and networking.

MEMBERSHIPS & AFFILIATIONS

REIC Member- Real Estate Investment Council
CCIM Candidate- Certified Commercial Investment Member
ICSC Member- International Council of Shopping Centers

David Rosenthal

813.882.0884
david@grimaldicommercialrealty.com

Kari L. Grimaldi/ Broker

813.882.0884
kari@grimaldicommercialrealty.com