



FranklinStreet

12021 Old Saint Augustine Rd

Jacksonville, FL, 32258

- 4.0 +/- Acre Carve Out
- 530 to 650 ft of frontage
- Zoned PBF-1
- Zoned, Entitled, Site plan approved, with plans for Senior Living Facility
- Zoning also allows mix of other uses

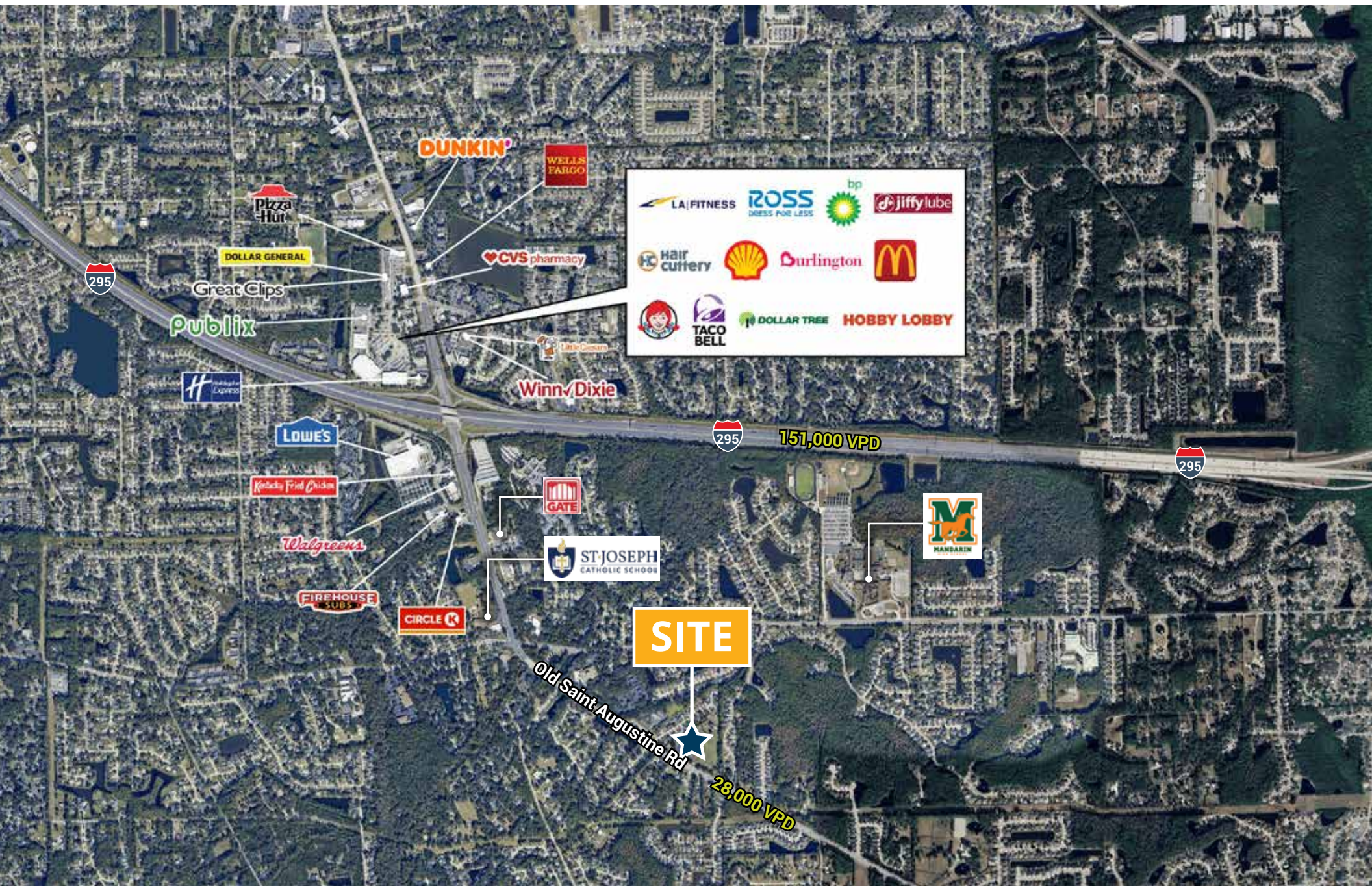


PROPERTY AERIAL



- » Zoned, Entitled, Site plan approved, with plans for Senior Living Facility
- » Design for 104 Senior Living units along with 10,600 SF Day Care

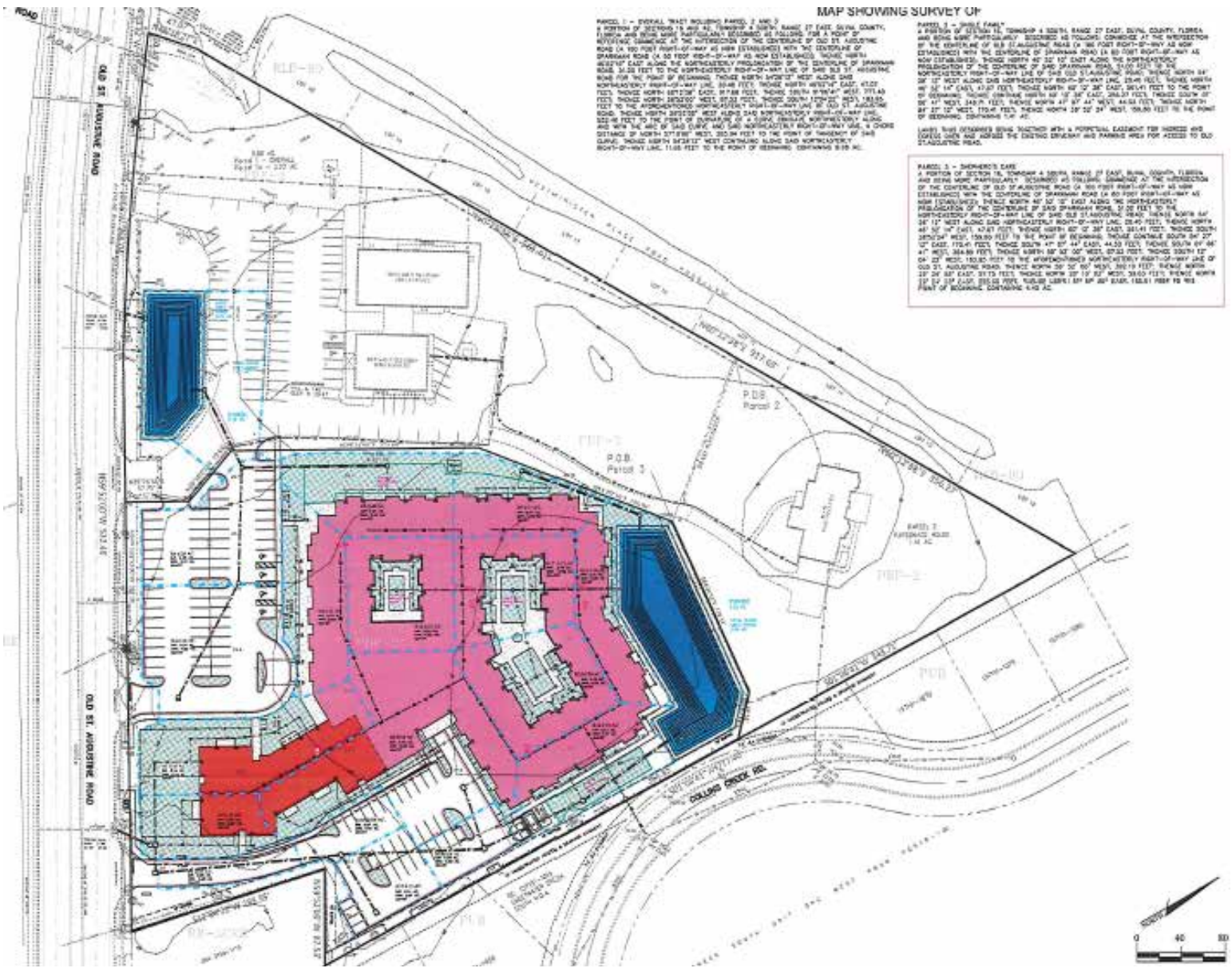




SENIOR LIVING SITE PLAN



FULL SITE PLAN



SITE PLAN (OTHER USES)



AREA DEMOGRAPHICS

GREENLAND/MANDARIN SUBMARKET

Greenland and Mandarin are neighborhoods in Jacksonville, Florida, known for their family-friendly atmosphere and suburban living, with a focus on schools and recreational opportunities. Greenland, located south of downtown Jacksonville, offers a variety of housing options and convenient access to shopping and restaurants. Mandarin, known for its tree-lined streets and established homes, is also a popular choice for families due to its top-rated schools and proximity to parks.

JACKSONVILLE



Mandarin Station, FL



Greenland, FL



12021 Old Saint Augustine Rd

Jacksonville, FL, 32258

- 4.0 +/- Acre Carve Out
- 530 to 650 ft of frontage
- Zoned PBF-1
- Zoned, Entitled, Site plan approved, with plans for Senior Living Facility
- Zoning also allows mix of other uses

SHAUN MAYBERRY (LEAD)

Senior Director

904.219.9035

shaun.mayberry@franklinst.com

GIOVANNY CASTANO

Senior Associate

904.364.2091

giovanny.castano@franklinst.com

KEITH WOOD

Senior Associate

904.364.0952

keith.wood@franklinst.com

COOPER FOLDS

Associate

229.947.3436

cooper.folds@franklinst.com



FranklinStreet

Franklin Street Real Estate Services, LLC - A Licensed Florida Broker: CQ1032352