

OFFICE FOR LEASE



OFFICE FOR LEASE



GARY SIDELL

President

978.375.7363

garys@belltowercregroup.com

630 TURNPIKE ST

North Andover, MA 01845

630 TURNPIKE ST | NORTH ANDOVER, MA 01845

OFFICE FOR LEASE



PROPERTY DESCRIPTION

This well-located property on rte. 114 in North Andover offers exceptional visibility on this highly trafficked route. This professional office/medical building recently underwent renovations and is now offering ground floor suite availability with desirable exterior signage opportunities.

This fully updated and beautifully maintained property has ample parking for staff and clients and ADA accessibility. The new interior finishes include LVT flooring and HVAC system. The floor plan offers flexibility with the possibility for reception/waiting area, 4 offices and/or exam rooms, kitchenette, semi-private restrooms, and more. Uses include professional, service, and medical. Tenant is responsible for base rent + separately metered electricity.

Join other long-term tenants at this highly desirable and sought after North Andover location.

Call or email to schedule a tour today!

Alternate contact:

Jean DeBenedetto

978-251-5775

Jeanad@belltowercregroup.com

OFFERING SUMMARY

Lease Rate:	\$22.08 SF/yr (MG)
Number of Units:	6
Available SF:	1,250 SF
Lot Size:	44,374 SF
Building Size:	7,308 SF

DEMOGRAPHICS	0.3 MILES	0.5 MILES	1 MILE
Total Households	179	686	2,114
Total Population	560	2,467	7,970
Average HH Income	\$201,535	\$186,926	\$197,649

GARY SIDELL

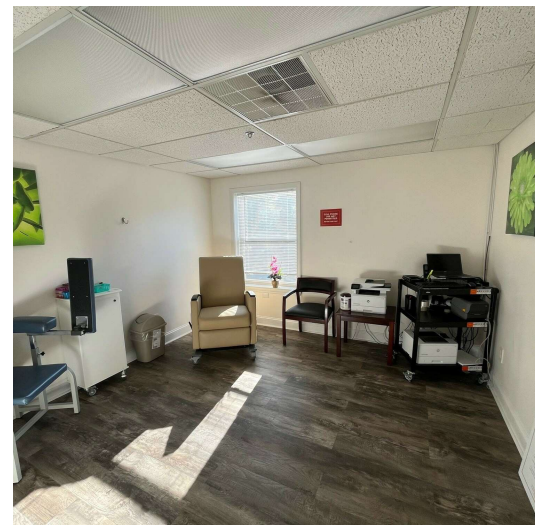
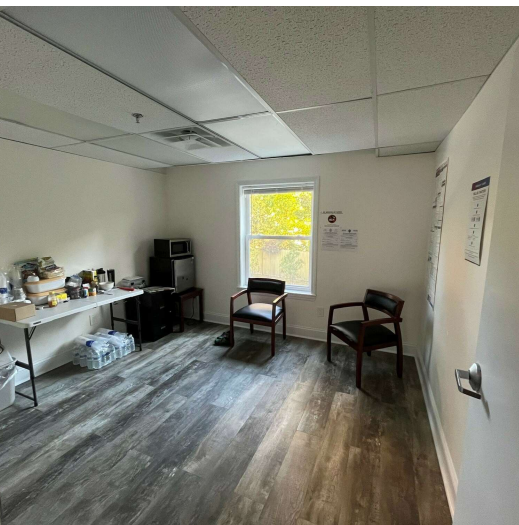
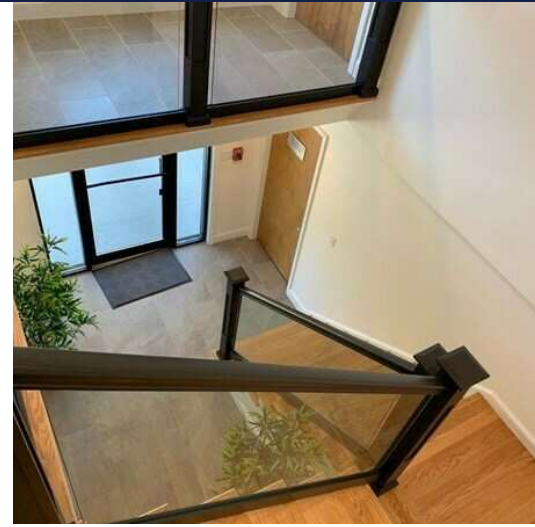
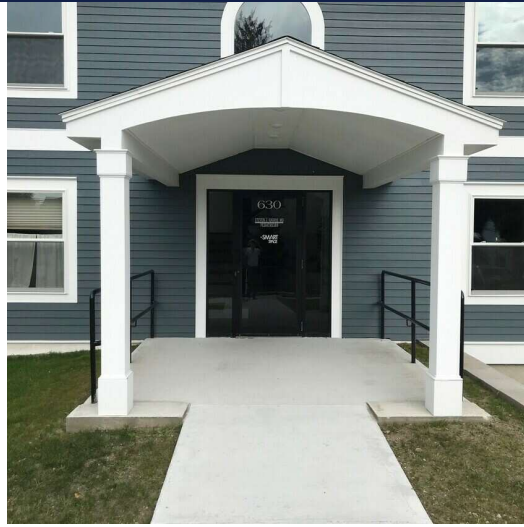
President

978.375.7363



630 TURNPIKE ST | NORTH ANDOVER, MA 01845

OFFICE LEASE



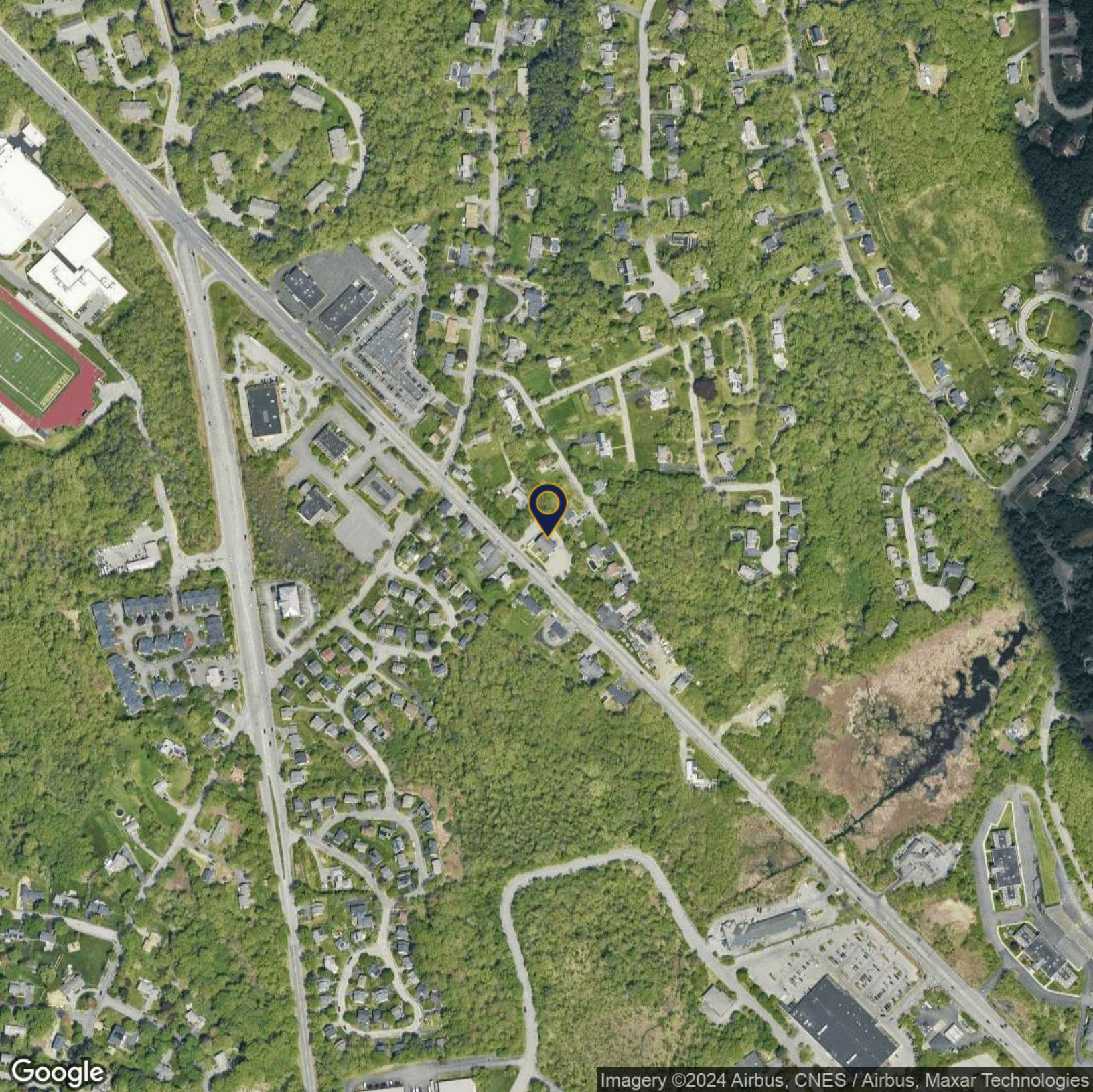
GARY SIDELL
President
978.375.7363



BELL TOWER CRE GROUP | 60 ISLAND STREET, LAWRENCE, MA 01840 | BELLTOWERCREGROUP.COM

630 TURNPIKE ST | NORTH ANDOVER, MA 01845

OFFICE FOR LEASE

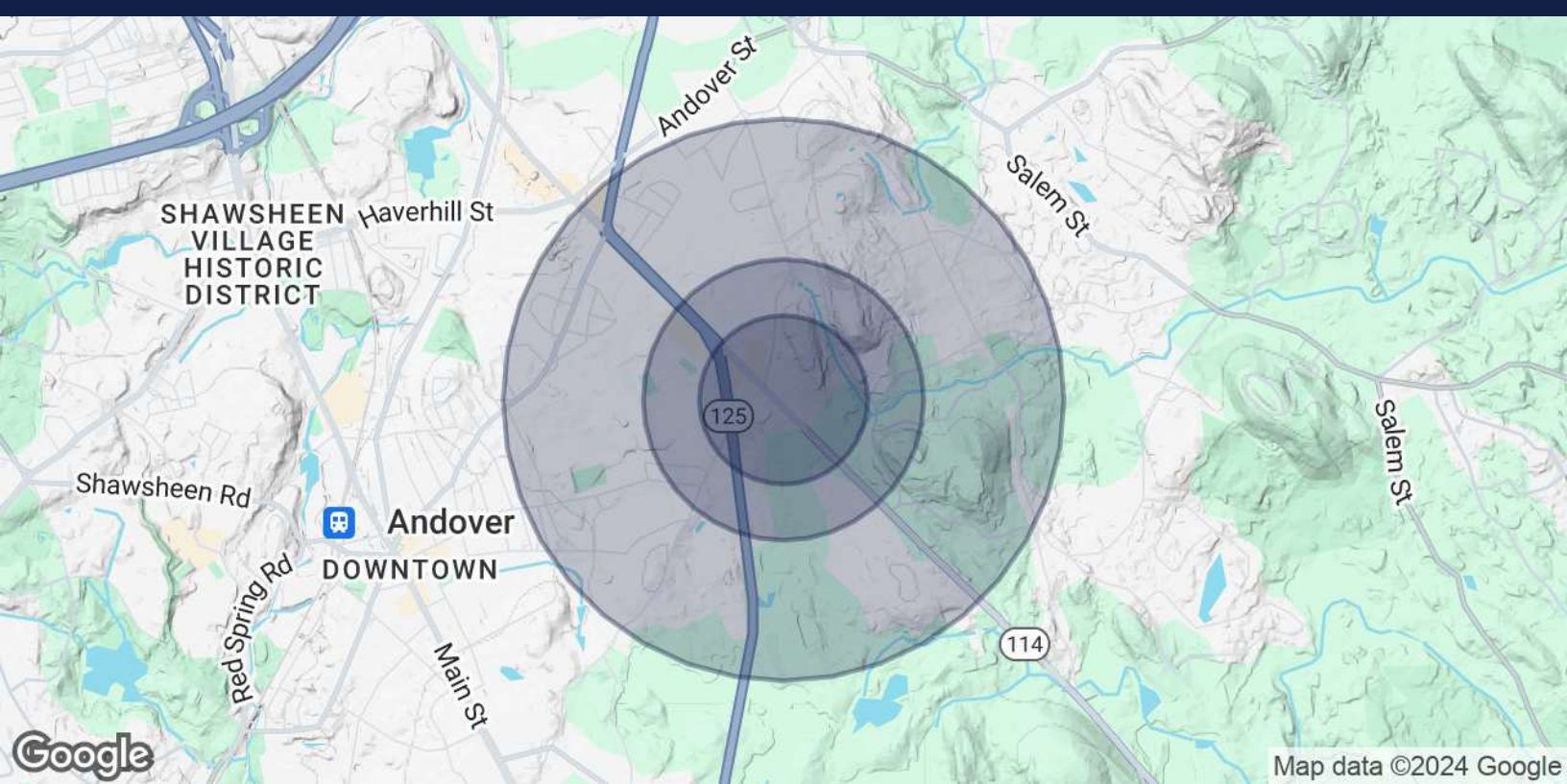


GARY SIDELL
President
978.375.7363



630 TURNPIKE ST | NORTH ANDOVER, MA 01845

OFFICE BUILDING FOR LEASE



POPULATION	0.3 MILES	0.5 MILES	1 MILE
Total Population	560	2,467	7,970
Average Age	37	33	34
Average Age (Male)	37	33	34
Average Age (Female)	38	34	34

HOUSEHOLDS & INCOME	0.3 MILES	0.5 MILES	1 MILE
Total Households	179	686	2,114
# of Persons per HH	3.1	3.6	3.8
Average HH Income	\$201,535	\$186,926	\$197,649
Average House Value	\$776,207	\$787,403	\$801,805

Demographics data derived from AlphaMap

GARY SIDELL

President
978.375.7363

