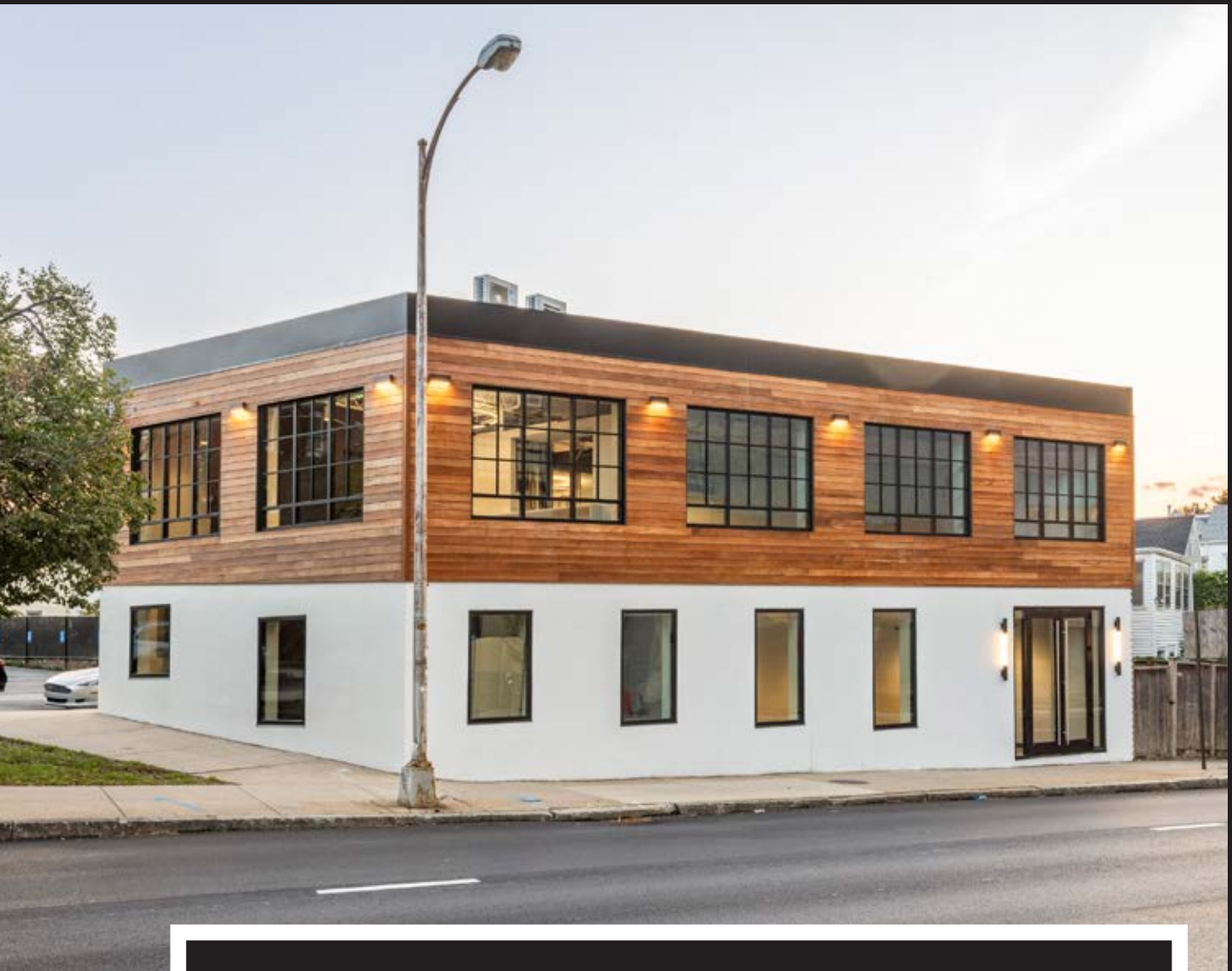


15 WINTER STREET

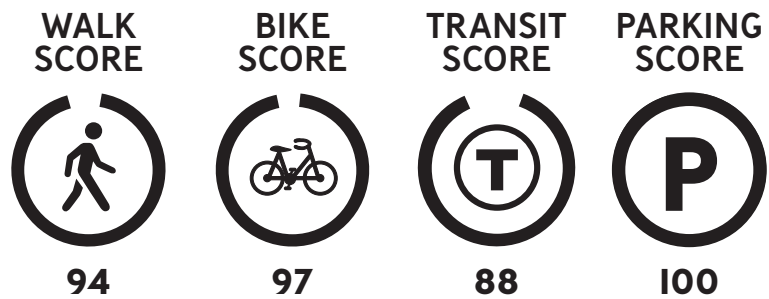


EAST CAMBRIDGE, MA

NEWLY REDVELOPED BUILDING
RARE BOUTIQUE HQ OPPORTUNITY

PROPERTY SUMMARY

Boston Realty Advisors is pleased to present 15 Winter Street for lease. This unique 3,045 SF fully redeveloped two (2) story building is conveniently located in East Cambridge – the global hub of innovation, world-class universities, and technology companies. 15 Winter Street is a rare opportunity for a growing company seeking it's own HQ identity with onsite parking, close proximity to Cambridge Crossing, Kendall Square, and Downtown Boston.

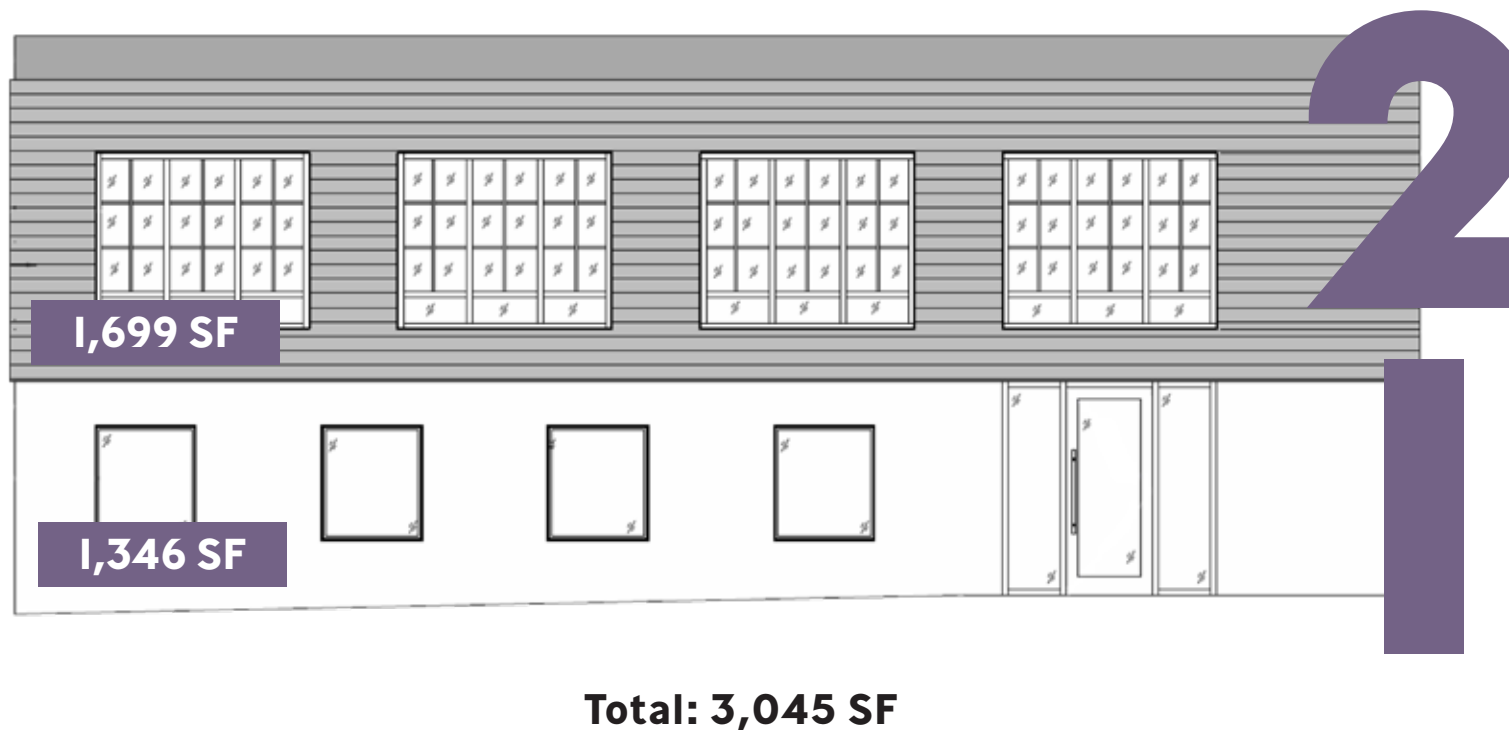


BUILDING HIGHLIGHTS

- Newly Redeveloped Building.
- Building Signage Opportunity.
- Steps to the New Lechmere T Station (Green Line).
- ADA Compliant.
- Onsite Parking Available.
- New and Active Ownership.



AVAILABILITY

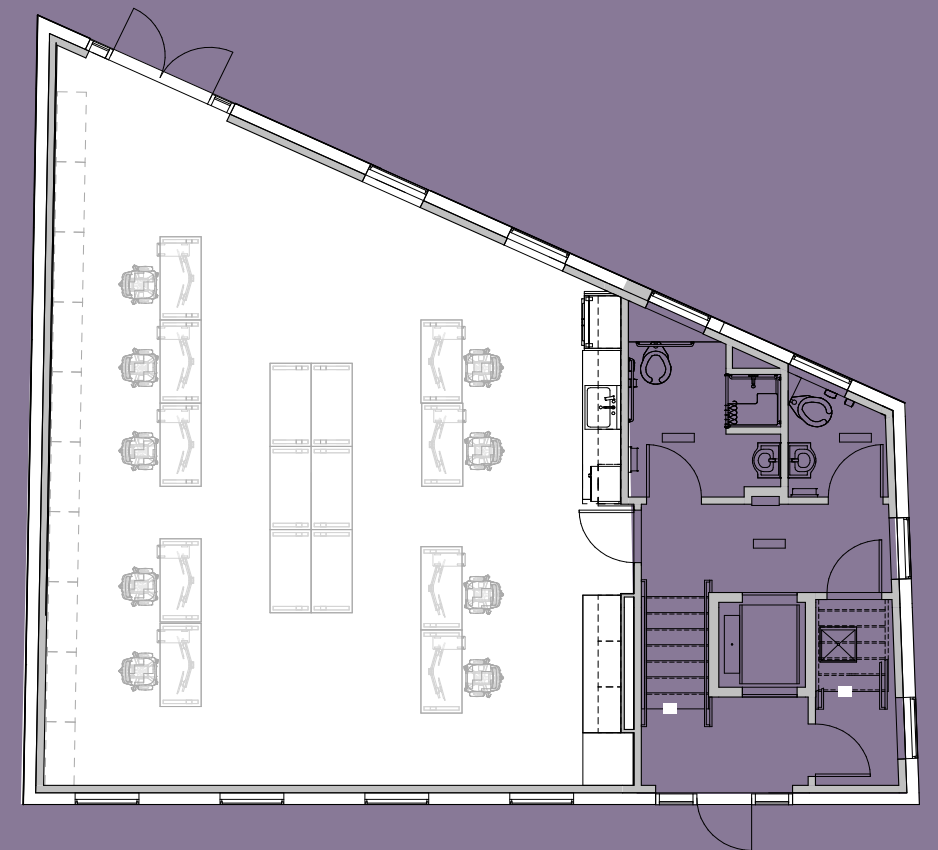




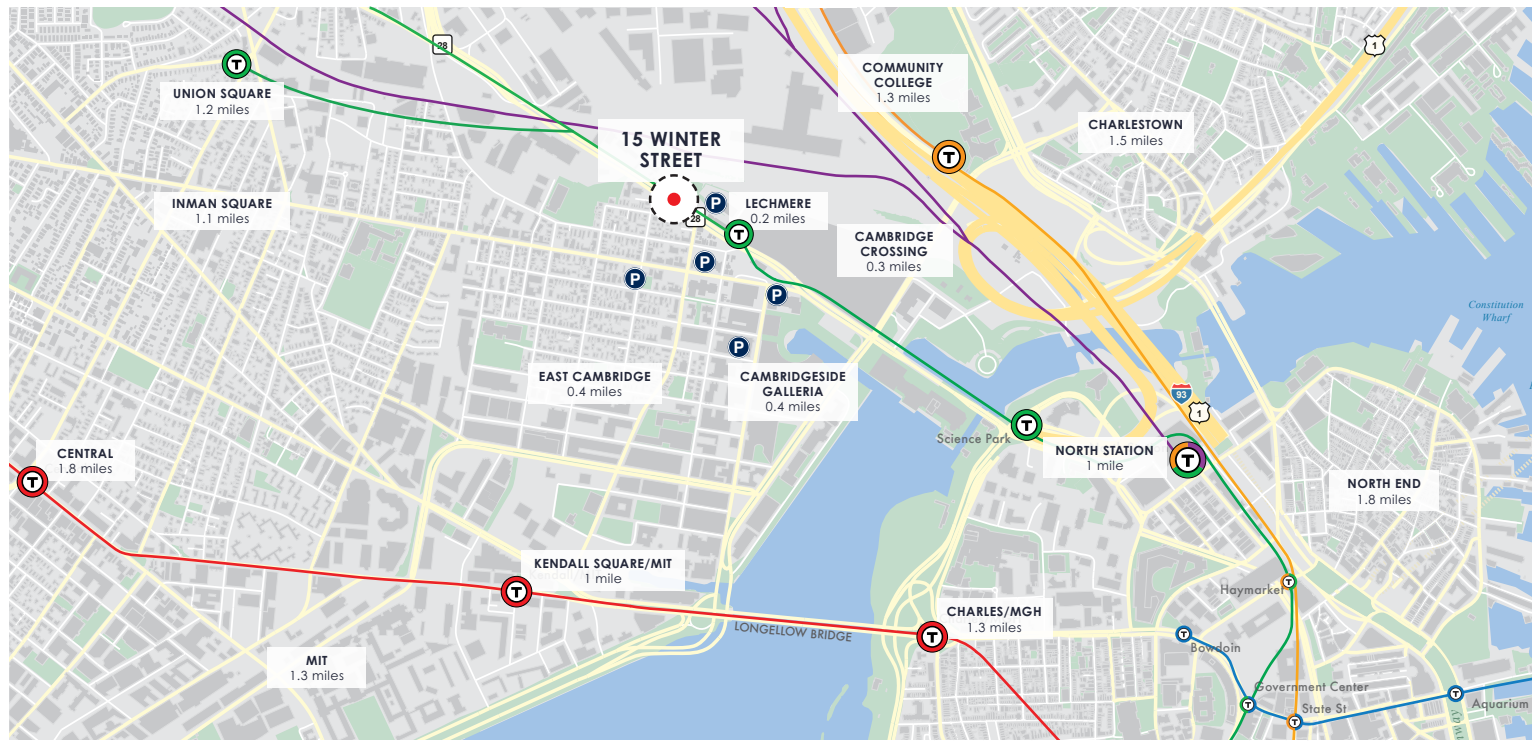
**LEVEL
TWO**
1,699 SF







**LEVEL
ONE**
1,346 SF



CONVENIENTLY LOCATED & TRANSIT-ORIENTED



NEIGHBORHOOD AMENITIES

-  Steps from MBTA's Lechmere T Station.
-  Conveniently located to Cambridge Crossing, Kendall Square, MIT, and Downtown Boston.
-  Within walking distance of significant restaurant and retail amenities.
-  Ample onsite parking.



JUSTIN D. HARLOW
617.850.9613
jharlow@bradvisors.com

ROBERT F. LECLAIR
617.850.9614
rleclair@bradvisors.com

 Boston Realty Advisors

136 Newbury Street | Boston, MA 02116 | 617.375.7900 | BRAdvisors.com

The East Cambridge Co.

