

+2,553 SF Office Space

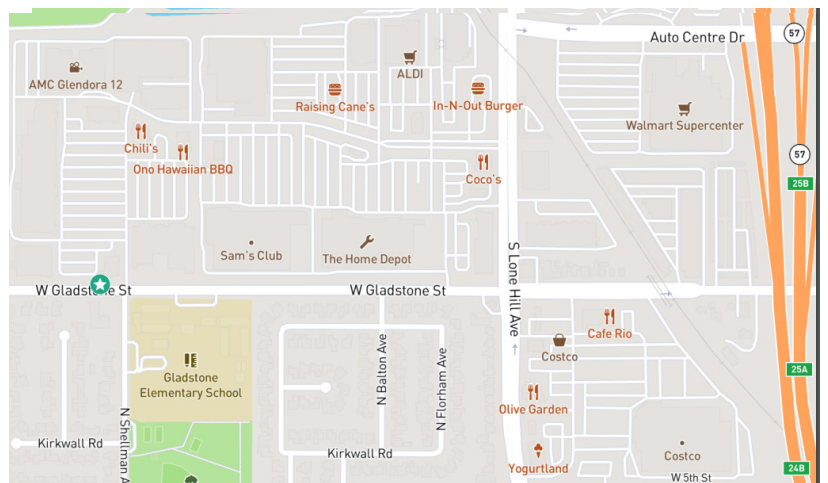
1343 E. Gladstone Street | Suite 208 | Glendora, CA

Asking Rate: \$2.05/SF/Modified Gross



Property Highlights

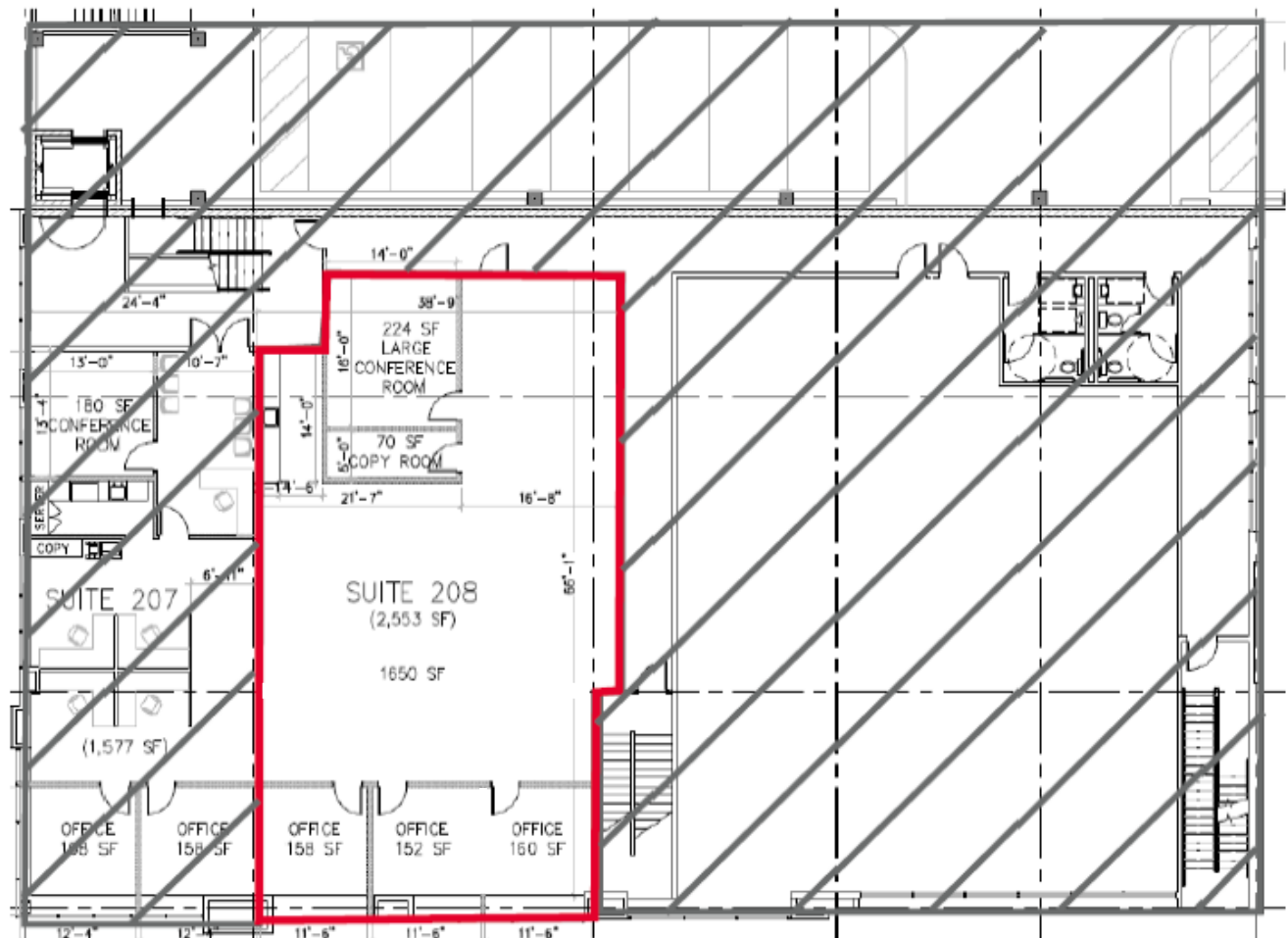
- + Ready for Immediate Occupancy
- + Master Lease through March 31, 2026
- + Offers Easy Access to the I-57 and 210 Freeways
- + Conveniently located near lots of restaurants and retail stores



+ 2,553 SF Office Building

1343 E. Gladstone Street | Suite 208 | Glendora, CA

For Sublease



SUITE DESCRIPTION

- + 2 Private Executive Style Offices
- + Conference Room
- + Lobby Area
- + Break Room
- + Large Open Bull Pen

INTERIOR PICTURES





COMMON AREA/LOBBY PICTURES



PARKING GARAGE

+ 2,553 SF Office Building

1343 E. Gladstone Street | Suite 208 | Glendora, CA

For Sublease



Contact Us

Steven Saunders

Vice President

+1 909 418 2006

steven.saunders@cbre.com

Lic. 01932948

© 2023 CBRE, Inc. All rights reserved. This information has been obtained from sources believed reliable, but has not been verified for accuracy or completeness. You should conduct a careful, independent investigation of the property and verify all information. Any reliance on this information is solely at your own risk. CBRE and the CBRE logo are service marks of CBRE, Inc. All other marks displayed on this document are the property of their respective owners, and the use of such logos does not imply any affiliation with or endorsement of CBRE. Photos herein are the property of their respective owners. Use of these images without the express written consent of the owner is prohibited.