

715 W. MORGAN ST.
RALEIGH, NC 27603



CHRISTINA COFFEY
ccoffey@lee-associates.com
O 919.591.2273
M 919.522.9915

100 Walnut Street | Cary, NC 27511 | 919-576-2500 | lee-associates.com/raleigh

 **LEE &
ASSOCIATES**
COMMERCIAL REAL ESTATE SERVICES
RALEIGH • DURHAM • WILMINGTON

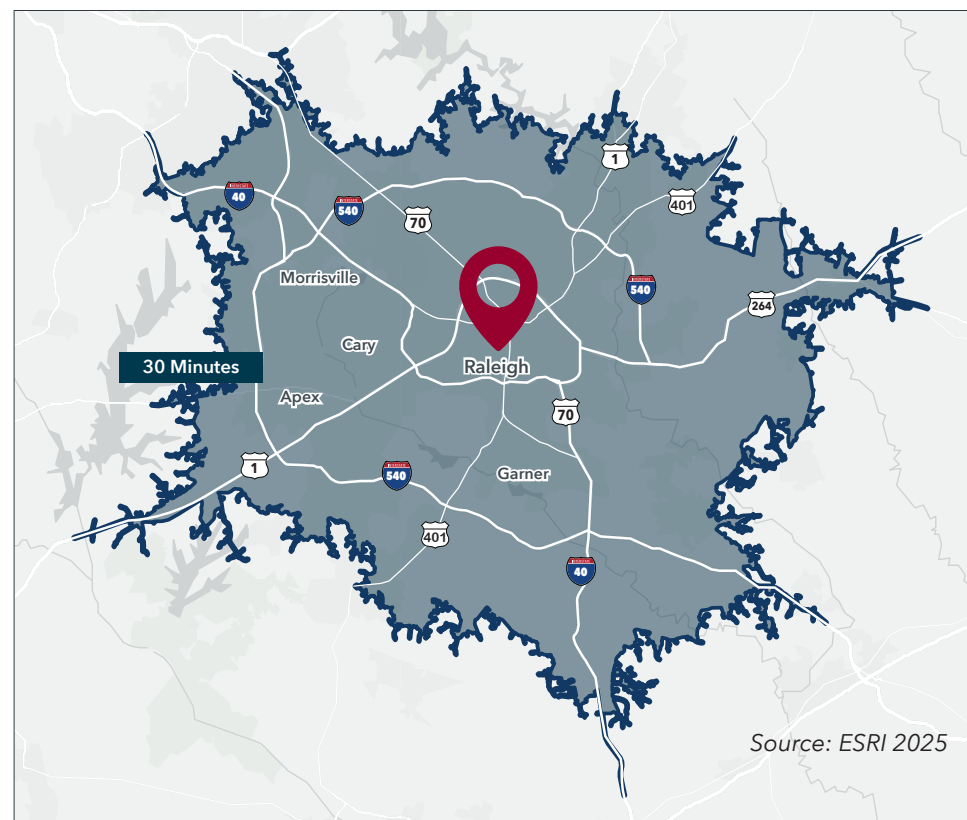
PROPERTY OVERVIEW

AVAILABILITY

- 715 W. Morgan Street: ± 2,000 SF on ± 0.19 acres
- [View 3D Tour](#)
- Purchase price: \$1,200,000

PROPERTY HIGHLIGHTS

- PIN #: 1703385885
- ± 2,000 SF Building
- ± 0.19 Acres
- 3-Story building with 5 private offices, reception area, bathroom on each level, full kitchen, and unfinished basement
- Parking available in front and rear of property
- Entrance on St. Mary's Street
- Located at intersection of W. Morgan Street and St. Mary's Street in Downtown Raleigh
- Zoning: OX-4
- Private, park-like setting in back of property
- Surrounded by affluent and rapidly growing residential and commercial developments
- Walkable to many Downtown restaurants, bars, shopping, and other amenities including Union Station, Nash Square, Glenwood South, and Morgan Street Food Hall

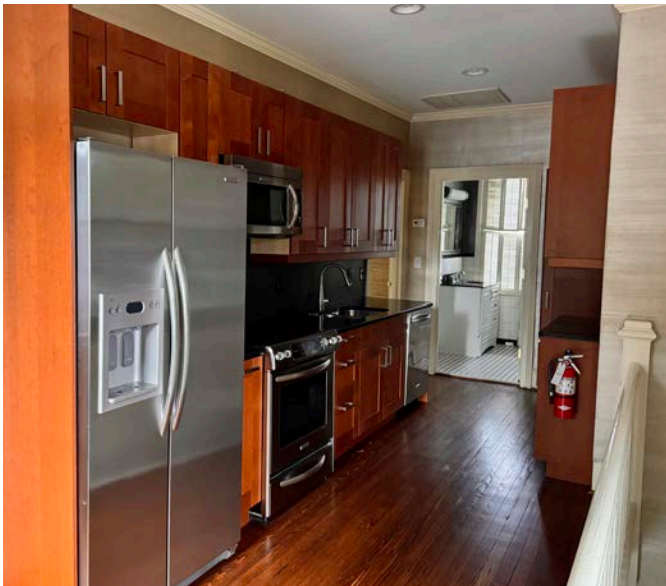
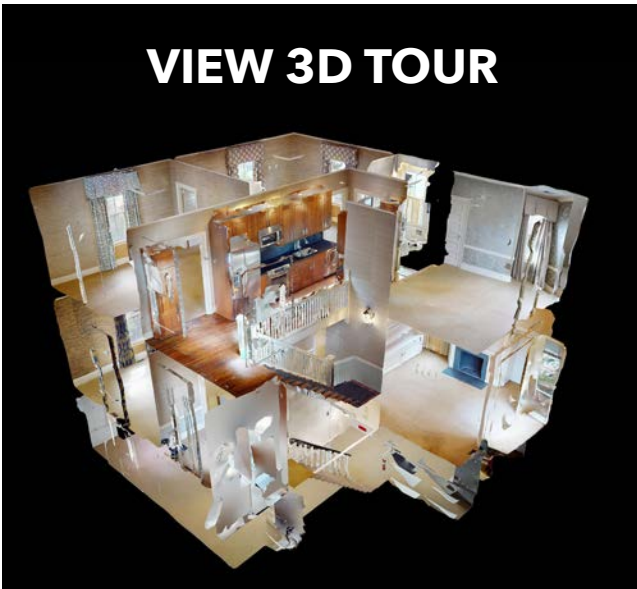


DEMOGRAPHICS

	1 Mile	3 Miles	5 Miles
Population	17,486	105,513	221,835
Avg. HH Income	\$145,335	\$135,456	\$128,146
No. of Businesses	3,033	6,627	14,984
No. of Employees	44,914	89,285	231,446
Total Daytime Population	61,475	154,059	352,297

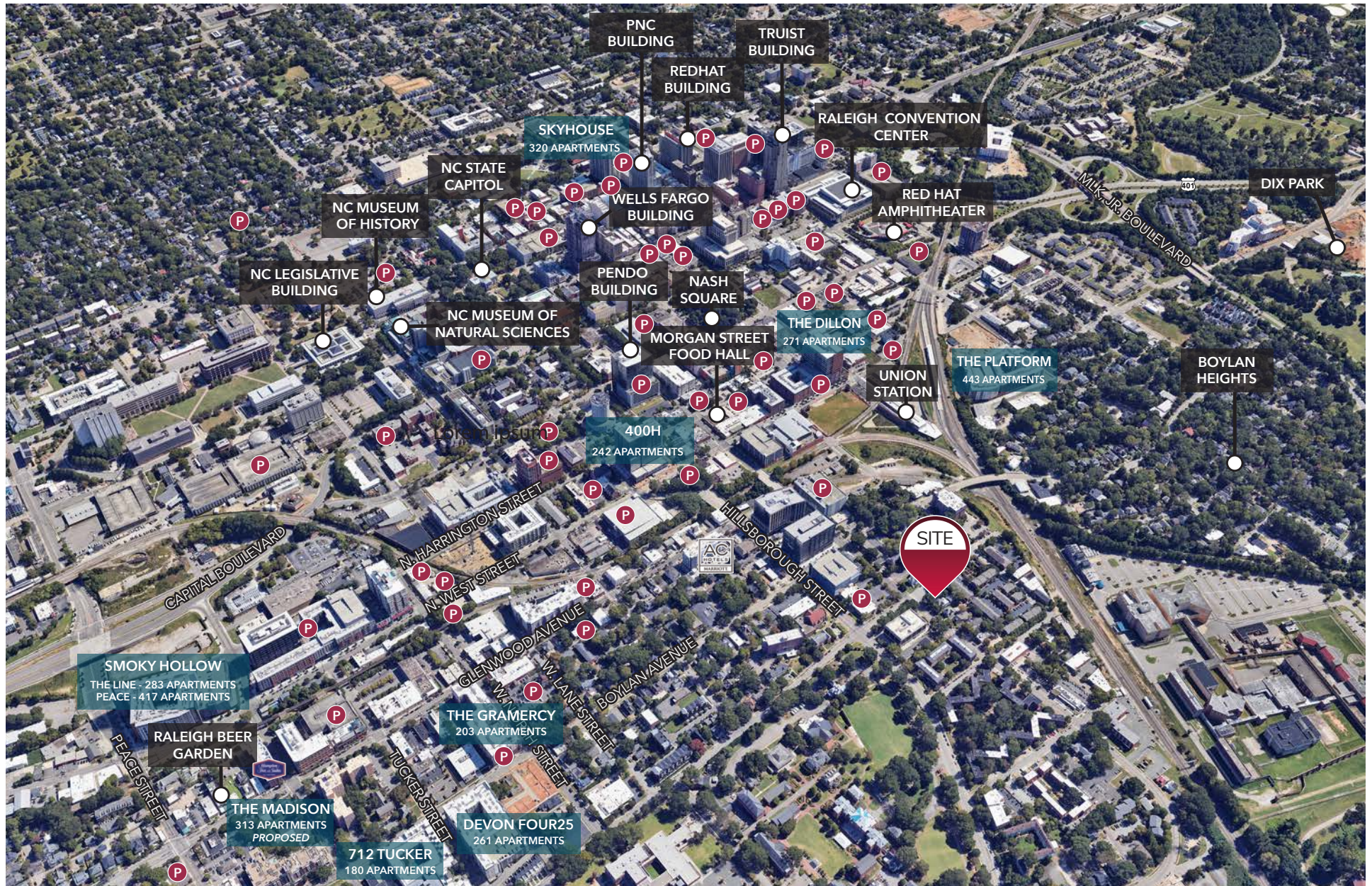
Source: ESRI 2025

715 W. MORGAN DETAILS



715 W. MORGAN ST • RALEIGH, NC 27603

AERIAL



715 W. MORGAN ST • RALEIGH, NC 27603