

For Sale or
For Lease

Move In Ready
Office Condos

4200 Cantera Drive

Warrenville, Illinois 60555

PROPERTY DETAILS

- Suite 102 - 6,473 SF
- Suite 117 - 5,130 SF
- Suite 203 - 1,648 SF
- Suite 204 - 1,430 SF

140 surface parking spaces available

Great access to I-88 via full interchanges at Winfield Rd. & Naperville Rd.

Minutes from Cantera restaurants

Also available For Sale

Lease Rate: \$19.75/SF Gross
(Includes all utilities, except janitorial)
MOVE IN READY!

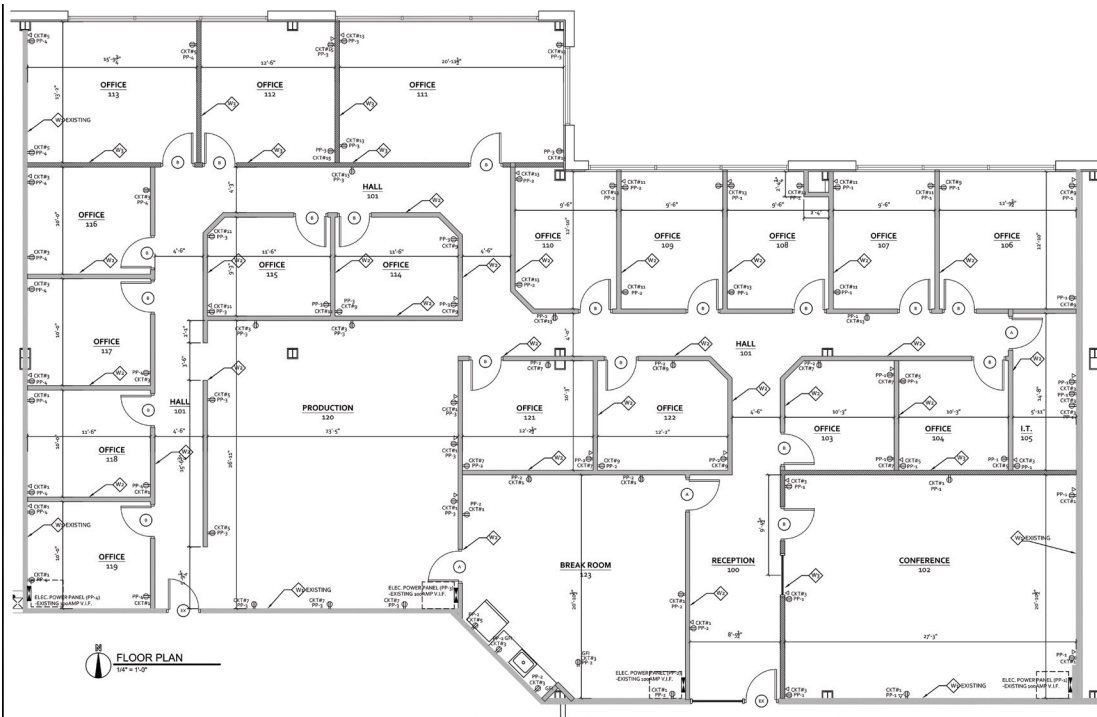
Contact

Connor Dale
+1 630 709 2785
cdale@hiffman.com

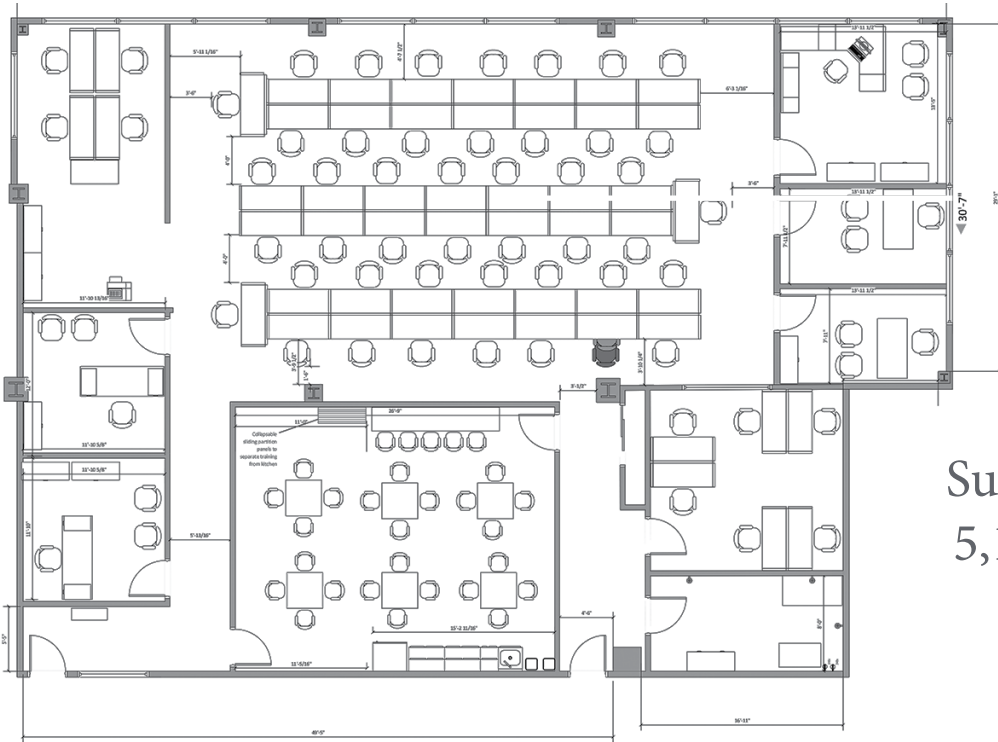
Perry Higa
+1630 693 0684
phiga@hiffman.com

One Oakbrook Terrace
Suite 600
Oakbrook Terrace, Illinois 60181
+1 630 932 1234

4200 CANTERA DRIVE, WARRENVILLE, ILLINOIS

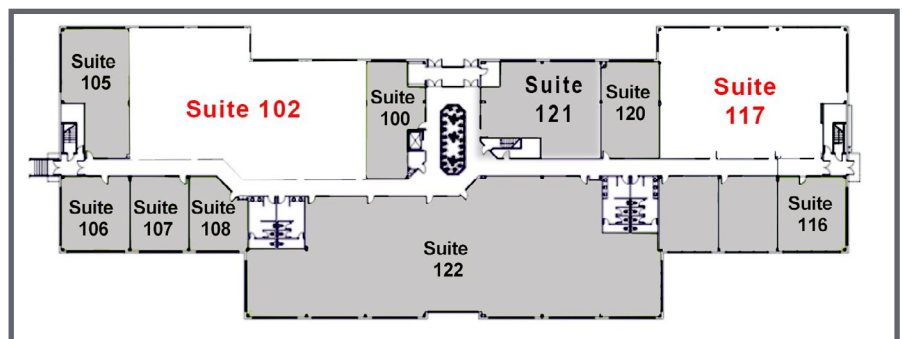


Suite 102
6,473 SF

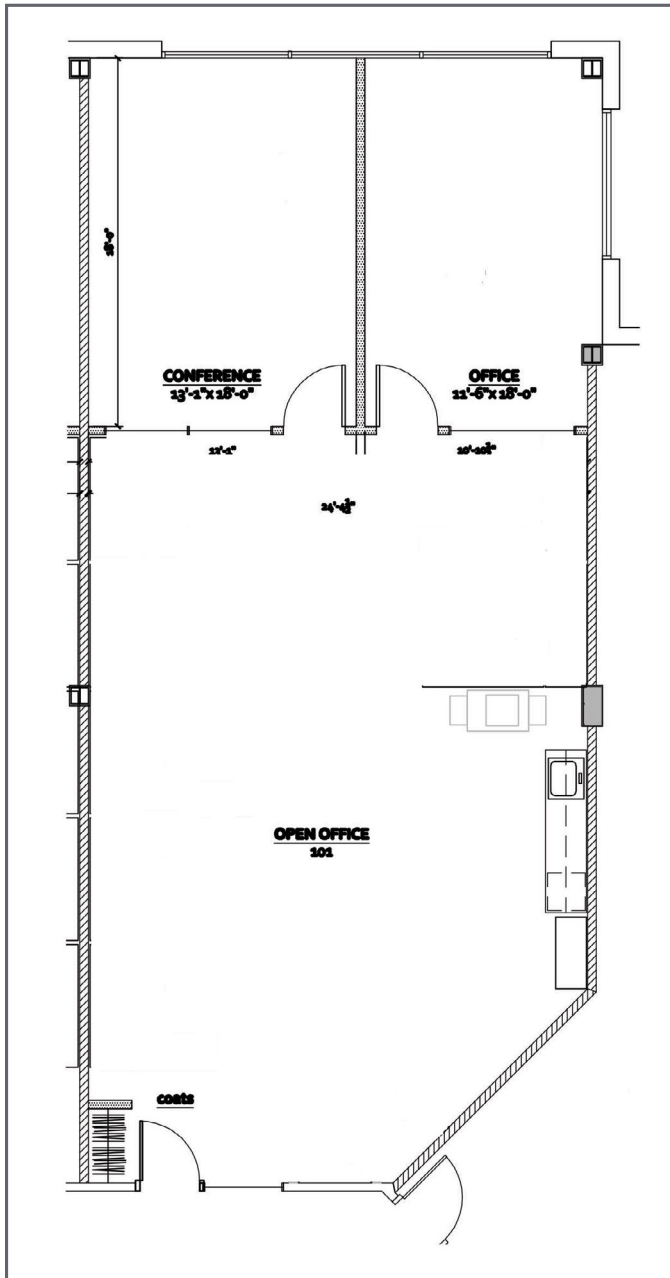


First Floor

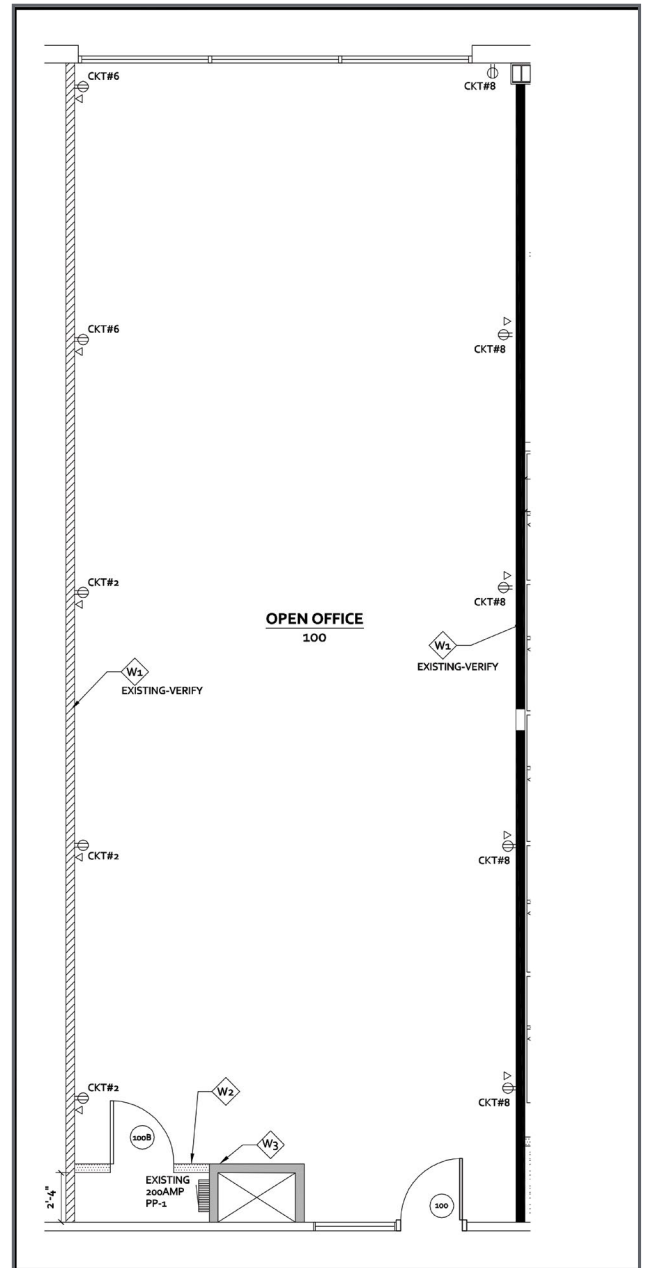
Suite 117
5,130 SF



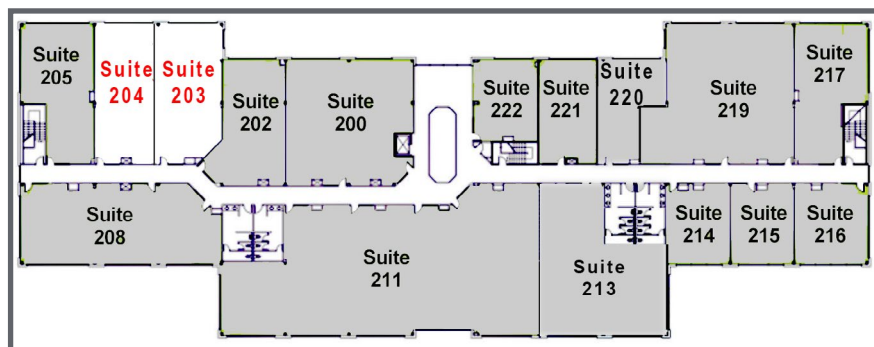
Second Floor



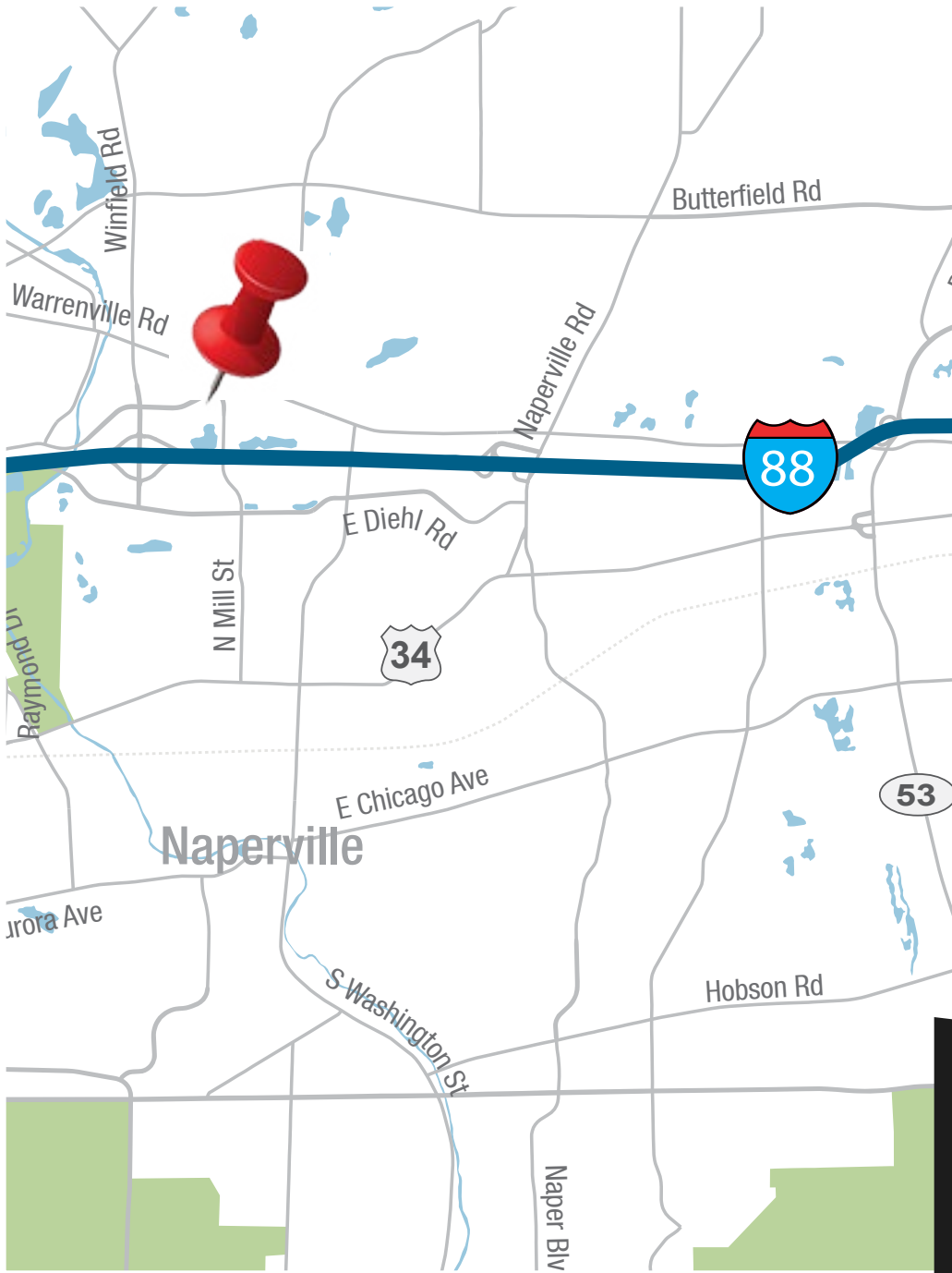
Suite 203
1,648 SF



Suite 204
1,430 SF



4200 CANTERA DRIVE, WARRENVILLE, ILLINOIS



[Property Website](#)

Contact

Connor Dale
+1 630 709 2785
cdale@hiffman.com

Perry Higa
+1630 693 0684
phiga@hiffman.com

One Oakbrook Terrace
Suite 600
Oakbrook Terrace, Illinois 60181
+1 630 932 1234

NO WARRANTY OR REPRESENTATION, EXPRESS OR IMPLIED, IS MADE AS TO THE ACCURACY OF THE INFORMATION CONTAINED HEREIN, AND THE SAME IS SUBMITTED SUBJECT TO ERRORS, OMISSIONS, CHANGE OF PRICE, RENTAL OR OTHER CONDITIONS, PRIOR SALE, LEASE OR FINANCING, OR WITHDRAWAL WITHOUT NOTICE, AND OF ANY SPECIAL LISTING CONDITIONS IMPOSED BY OUR PRINCIPALS NO WARRANTIES OR REPRESENTATIONS ARE MADE AS TO THE CONDITION OF THE PROPERTY OR ANY HAZARDS CONTAINED THEREIN ARE ANY TO BE IMPLIED.

hiffman.com