

For Lease

4,600 Sq. Ft. Industrial Condo Unit

8404 S. Wilmette Ave., Unit E - Darien, IL



Lease Rate: \$13.95 psf gross

- | | |
|---|---|
| <ul style="list-style-type: none">• 1,496 s.f. office space• 400 AMPs, 480 volts• One (1) drive-in door (12' x 12')• Skylights• Exhaust fan• 20' ceiling height• Epoxy coated warehouse floor | <ul style="list-style-type: none">• Fully air conditioned warehouse space• Triple basin floor drain• Part of a larger building• Ample parking• Separately metered utilities• Immediate access to I-55 @ Cass Ave.• Well maintained, professional management |
|---|---|

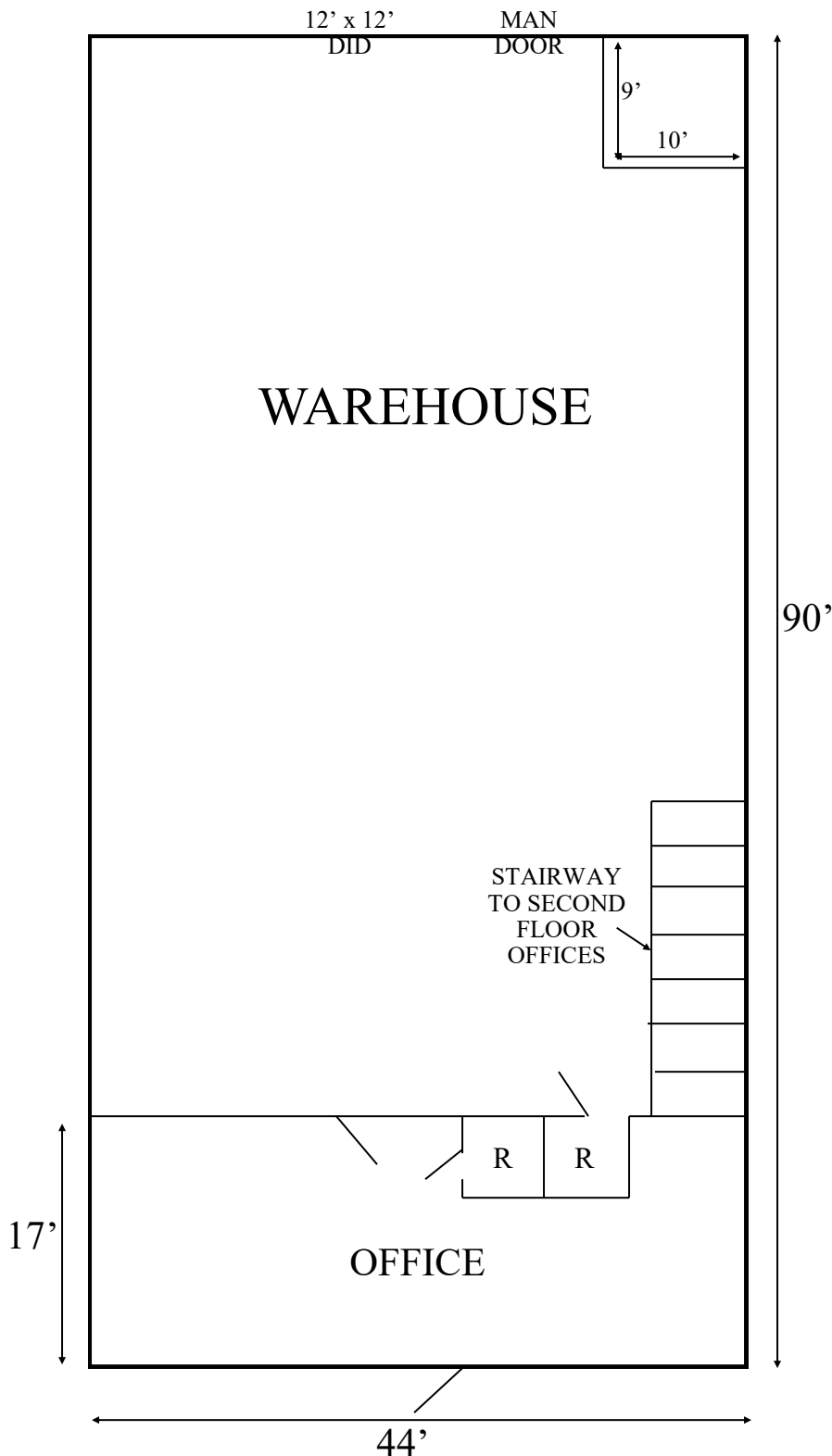


Exclusively Offered by:
Daniel Chopp
(708) 387-2640
dan@choppcommercial.com

All information herein is from sources deemed reliable but not guaranteed accurate.
Subject to errors, omissions, and to change of price and terms, prior sale or lease, all without notice.

8404 Wilmette Ave., Unit E - Darien, IL

NOTE: THIS DRAWING NOT TO SCALE.



Exclusively Offered by:
Daniel Chopp
(708) 387-2640
dan@choppcommercial.com

All information herein is from sources deemed reliable but not guaranteed accurate.
Subject to errors, omissions, and to change of price and terms, prior sale or lease, all without notice.

8404 Wilmette Ave., Unit E - Darien, IL Exterior Photos



Exclusively Offered by:
Daniel Chopp
(708) 387-2640
dan@choppcommercial.com

All information herein is from sources deemed reliable but not guaranteed accurate.
Subject to errors, omissions, and to change of price and terms, prior sale or lease, all without notice.

8404 Wilmette Ave., Unit E - Darien, IL

Interior Photos



Exclusively Offered by:
Daniel Chopp
(708) 387-2640
dan@choppcommercial.com

All information herein is from sources deemed reliable but not guaranteed accurate.
Subject to errors, omissions, and to change of price and terms, prior sale or lease, all without notice.