

# 185 Howard Avenue

Bedford Stuyvesant, Brooklyn, NY

**Location:**

Between Bainbridge Street and Chauncey Street

**Floors:**

Ground Level: 1,000 SF + 1,000 SF Lower Level

**Frontage:**

40 FT on Howard Avenue

**Ceiling Heights:**

10.5 FT

**Price:**

Upon Request

**Highlights:**

- Vented retail space on a busy block on Howard Avenue with strong foot traffic
- 40 FT of frontage gives great exposure on Howard Avenue
- Located 4 blocks from A C train stop on Ralph Avenue and 5 blocks away from J train stop on Halsey Street
- Currently the retail includes venting, prep area, grease trap, refrigerators, fryer and two bathrooms
- All uses considered



**Neighboring Tenants:**



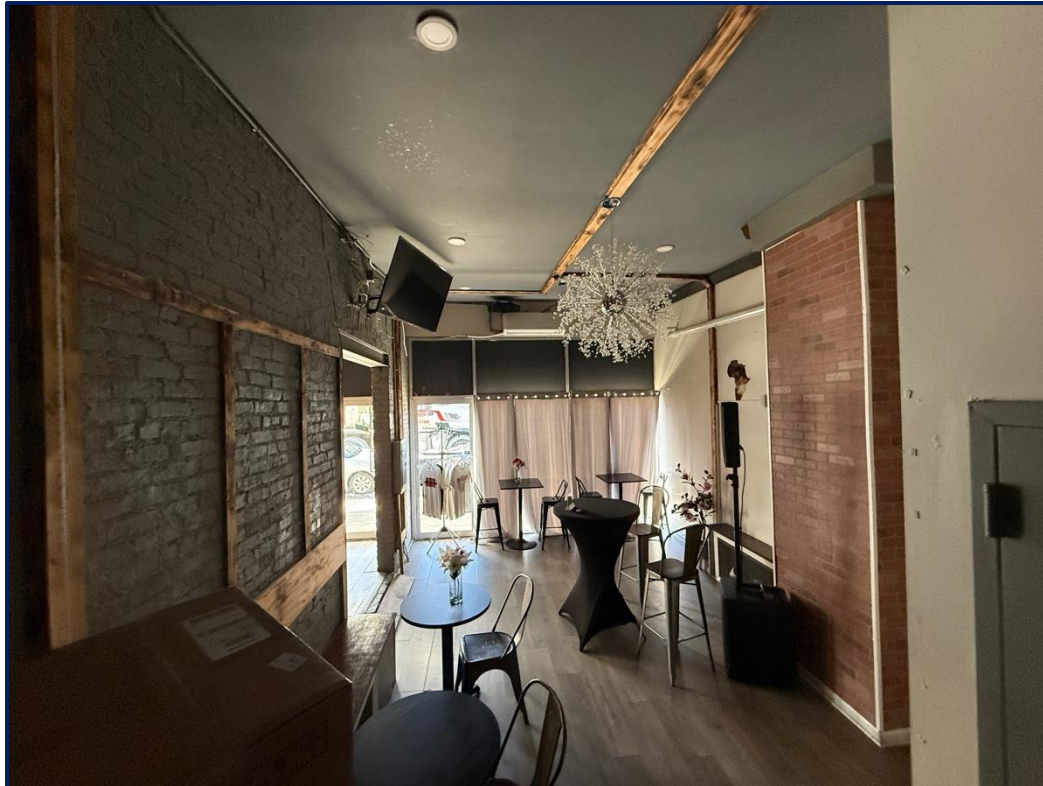
**Contact Olmsted Leasing Team**



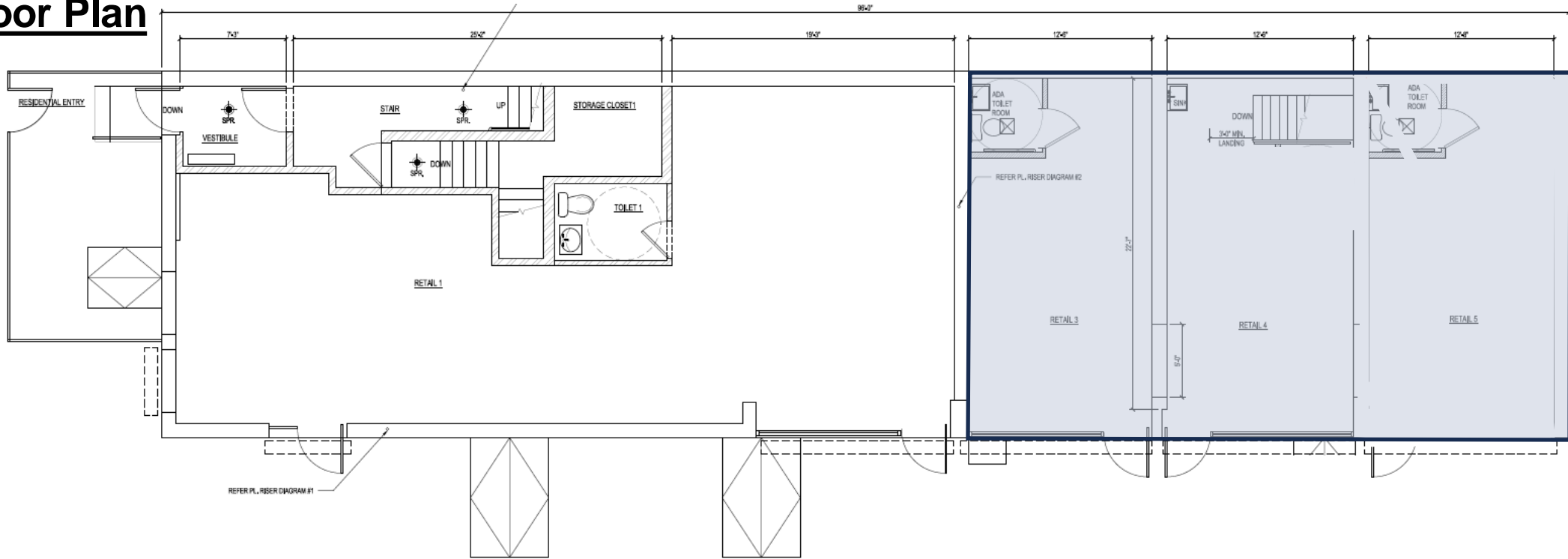
**Harrison Balisky**  
516-672-4493  
hb@olmstedre.com

**Brad Krosser**  
862-368-7271  
bk@olmstedre.com

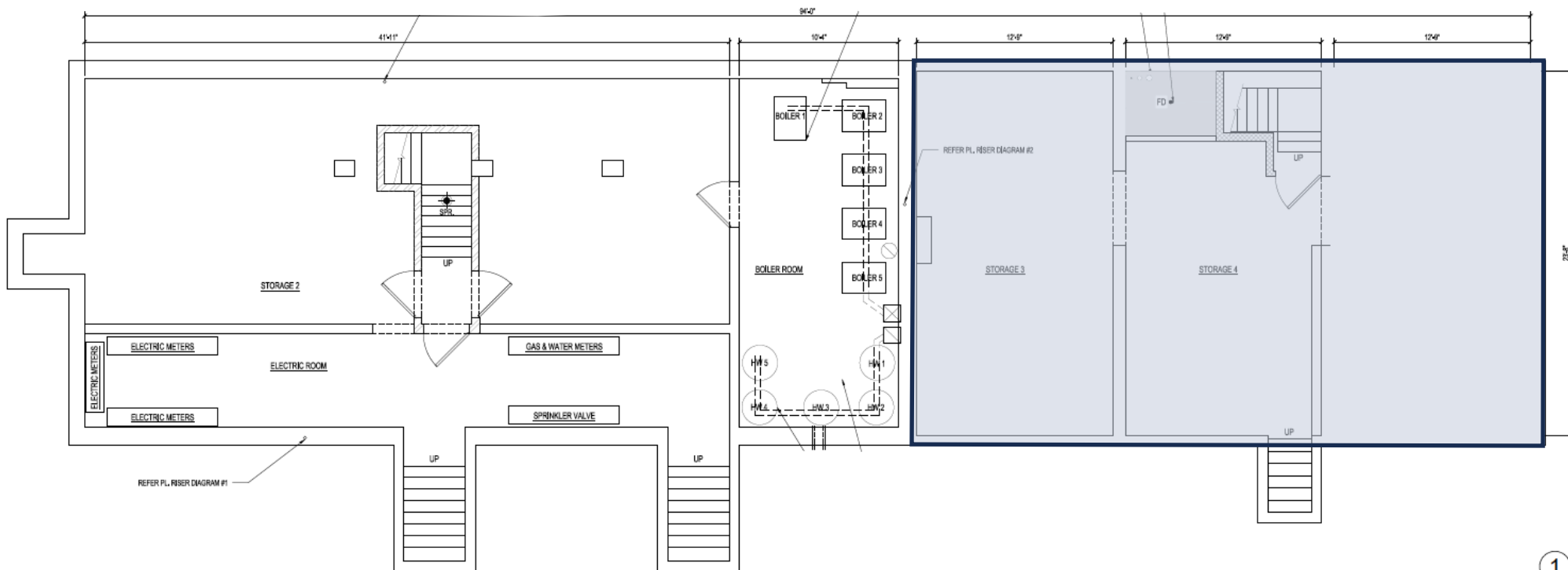
## Photos



## Floor Plan



2 FIRST FLOOR PLAN  
SCALE: 1/4" = 1'-0"



1 CELLAR PLAN  
SCALE: 1/4" = 1'-0"

## Public Transportation Map

### Annual Subway Ridership

**A C** trains are 7 min away from **Ralph Avenue** station with 1,073,687 annual ridership

**J** trains are 10 min away from **Halsey Street** station with 1,713,746 annual ridership

