

LEASE

OFFICE



345 FULLER AVE. NE



345 FULLER AVE. NE, GRAND RAPIDS, MI 49503

PROPERTY OVERVIEW

Rare stand-alone office building located just off of Michigan Street on Fuller Avenue near downtown Grand Rapids. One suite available that has been recently built out with a modern feel and may include nearly new furniture!

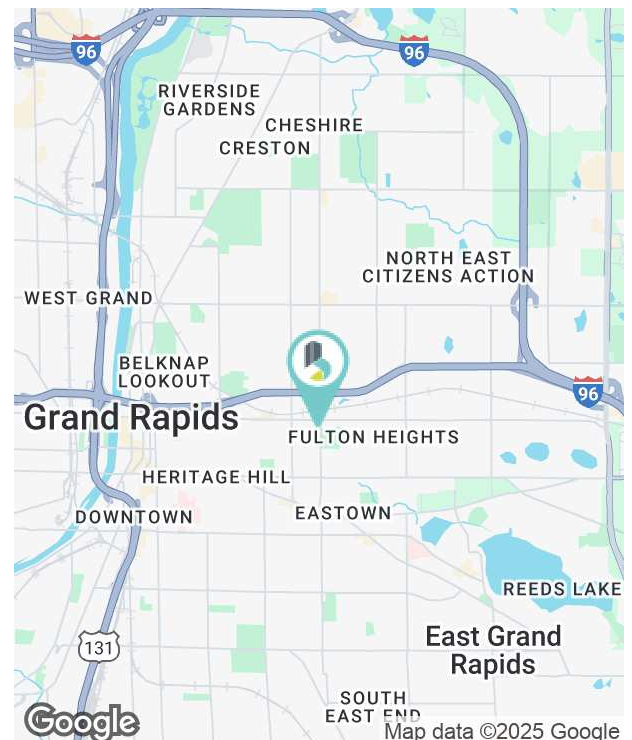
PROPERTY HIGHLIGHTS

- High visibility and accessibility via Fuller Ave.
- On-site parking spaces in lot and on street
- Open layout
- Close proximity to downtown Grand Rapids and I-196

LEASE RATE

\$12.00 SF/ YR (NNN)

Available SF:	2,125 SF
Building Size:	5,476 SF



BRADLEY COMPANY | JEFF TUCKER

220 Lyon St. NW, Suite 400
Grand Rapids, MI 49503
616.254.0005

Senior Managing Director, Brokerage | Principal
616.881.9321
jtucker@bradleyco.com



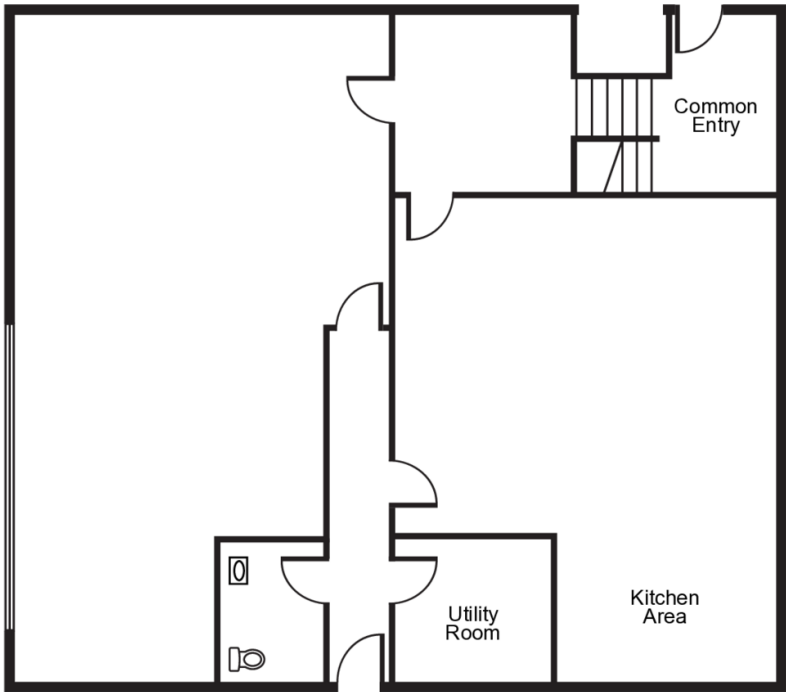
BRADLEYCO.COM



345 FULLER AVE. NE, GRAND RAPIDS, MI 49503

LEASE

OFFICE



LEASE INFORMATION

Lease Type:	NNN	Lease Term:	Negotiable
Total Space:	870 - 2,125 SF	Lease Rate:	\$12.00 SF/yr

JEFF TUCKER
Senior Managing Director, Brokerage | Principal
616.881.9321
jtucker@bradleyco.com



345 FULLER AVE. NE, GRAND RAPIDS, MI 49503

LEASE

OFFICE



JEFF TUCKER

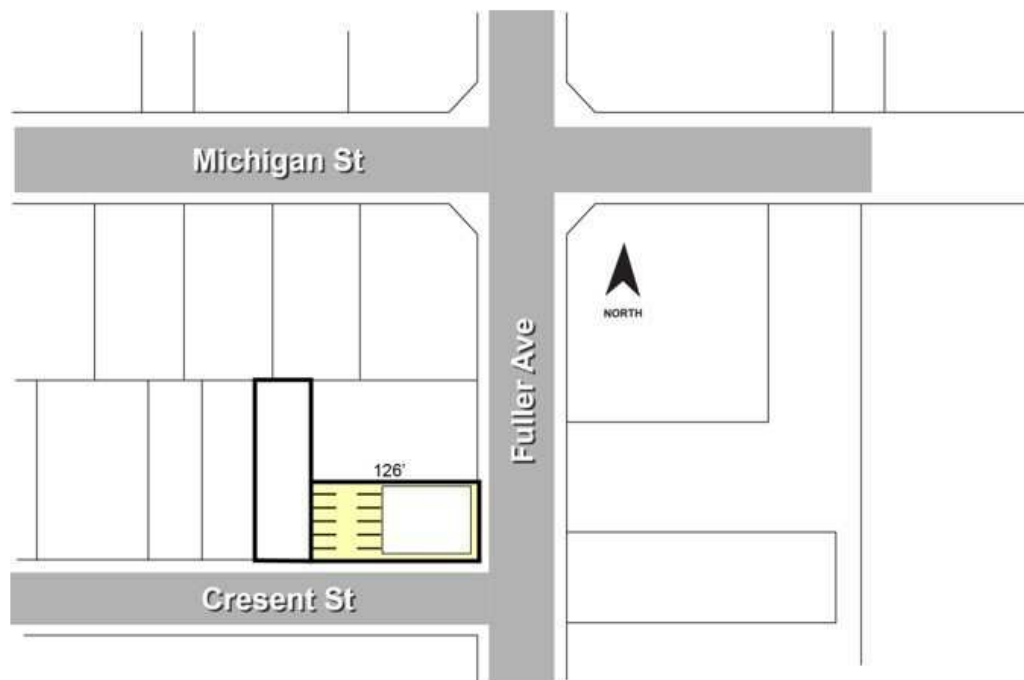
Senior Managing Director, Brokerage | Principal
616.881.9321
jtucker@bradleyco.com



345 FULLER AVE. NE, GRAND RAPIDS, MI 49503

LEASE

OFFICE



JEFF TUCKER

Senior Managing Director, Brokerage | Principal
616.881.9321
jtucker@bradleyco.com



MEET YOUR NEIGHBORS

345 FULLER AVE. NE, GRAND RAPIDS, MI 49503

LEASE

OFFICE



JEFF TUCKER

Senior Managing Director, Brokerage | Principal

616.881.9321

jtucker@bradleyco.com

©2025 Bradley Company, LLC and affiliates. Use of any third party name or mark is for informational purposes only and does not indicate sponsorship or endorsement by such party. Not all information has been independently verified, and the presenting broker makes no guarantee about its accuracy. Any projections, opinions, or estimates are for example only. Before completing a real estate transaction, you and your advisors should conduct an independent investigation of the property to determine its suitability for your needs.