

GOLDEN MILE SHOPPING CENTER: Cathedral City, CA.



PROPERTY LOCATION:

Golden Mile Shopping Center is located at the NWC of Date Palm Drive and Ramon Road, in Cathedral City, CA., and is considered the main corridor for Cathedral City's retail district. Date Palm Drive and Ramon Road are the main thoroughfares to access Interstate 10, and Date Palm Drive is Cathedral City's direct route to US Hwy 111.

Key intersection to serve the neighboring communities. The property offers opportunities for a variety of business profiles.



FEATURES: JUNIOR ANCHOR SPACE AVAILABLE: ± 10,000 SF to 21,000 SF FOR LEASE.



Doug Montgomery
760-318-7484 Ext. 223 / Lic. 01435021
doug@spinellocommercialrealestate.com

- ♦ Shopping Center anchored by Cardenas
- ♦ Located in Cathedral City's major retail district
- ♦ A strong mix of National, Regional and Local operators
- ♦ The Golden Mile boundary line shown above, is estimated

The information contained herein has been obtained by sources we believe to be reliable. While we have verified it we make no guarantee, warranty or representation about it.

Golden Mile Shopping Center: JUNIOR ANCHOR SPACE NOW AVAILABLE FOR LEASE



Positioned at the center's main entrance, this $\pm 10,000$ to 21,000 SF Junior Anchor space is well-suited for a variety of operators. Originally occupied by Pep Boys, the building includes a separated service bay area, offering flexibility in both use and leasable square footage.

Golden Mile Shopping Center is conveniently located at the main intersection of Cathedral City, Date Palm Drive and Ramon Road. Anchored by Cardenas Supermarket, all contributing to the center heavy foot traffic, and sought-after spaces to lease when available.

The Junior Anchor space features a loading dock, high ceilings, excellent visibility from Date Palm Drive, bright interior lighting, ample parking, and a service bay that can be leased separately.



Doug Montgomery
760-318-7484 Ext. 223 / Lic. 01435021
doug@spinellocommercialrealestate.com

31505 Date Palm Drive
Cathedral City, CA
Please call for terms and conditions

The information contained herein has been obtained by sources we believe to be reliable. While we have verified it we make no guarantee, warranty or representation about it.

Golden Mile Shopping Center: JUNIOR ANCHOR SPACE NOW AVAILABLE FOR LEASE

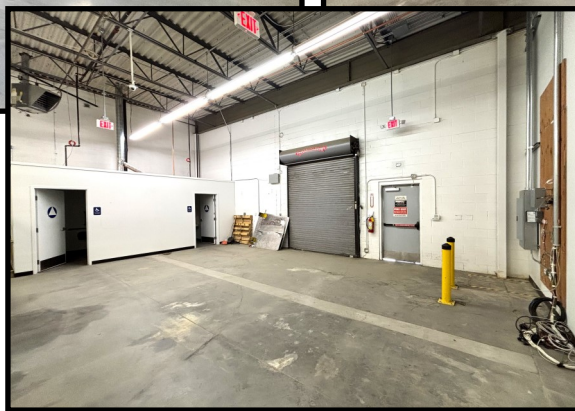
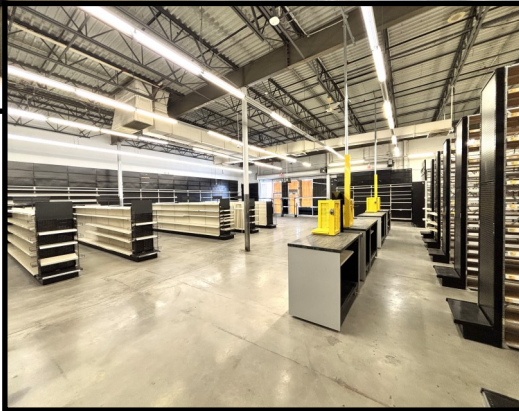


Doug Montgomery
760-318-7484 Ext. 223 / Lic. 01435021
doug@spinellocommercialrealestate.com

31505 Date Palm Drive
Cathedral City, CA
Front of building and service bays

The information contained herein has been obtained by sources we believe to be reliable. While we have verified it we make no guarantee, warranty or representation about it.

Golden Mile Shopping Center: Junior Anchor Interior Photos



Doug Montgomery
760-318-7484 Ext. 223 / Lic. 01435021
doug@spinellocommercialrealestate.com

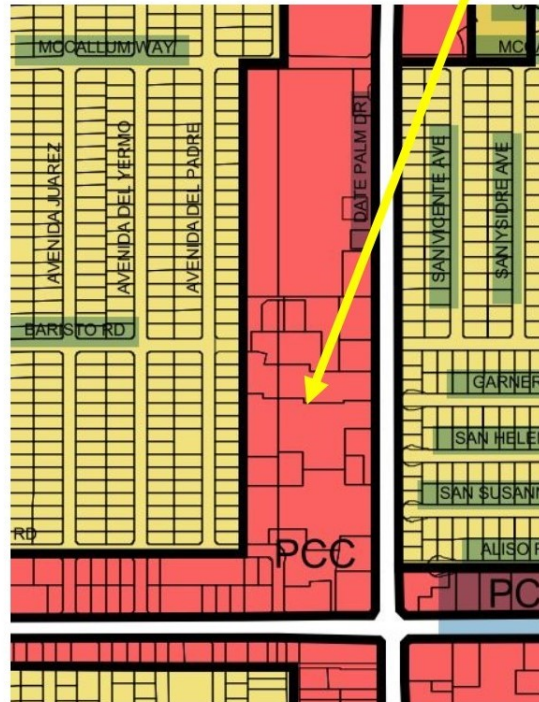
31505 Date Palm Drive
Cathedral City, CA
Clean affordable and ready for delivery

The information contained herein has been obtained by sources we believe to be reliable. While we have verified it we make no guarantee, warranty or representation about it.

Golden Mile Shopping Center: NWC Date Palm Drive & Ramon Road

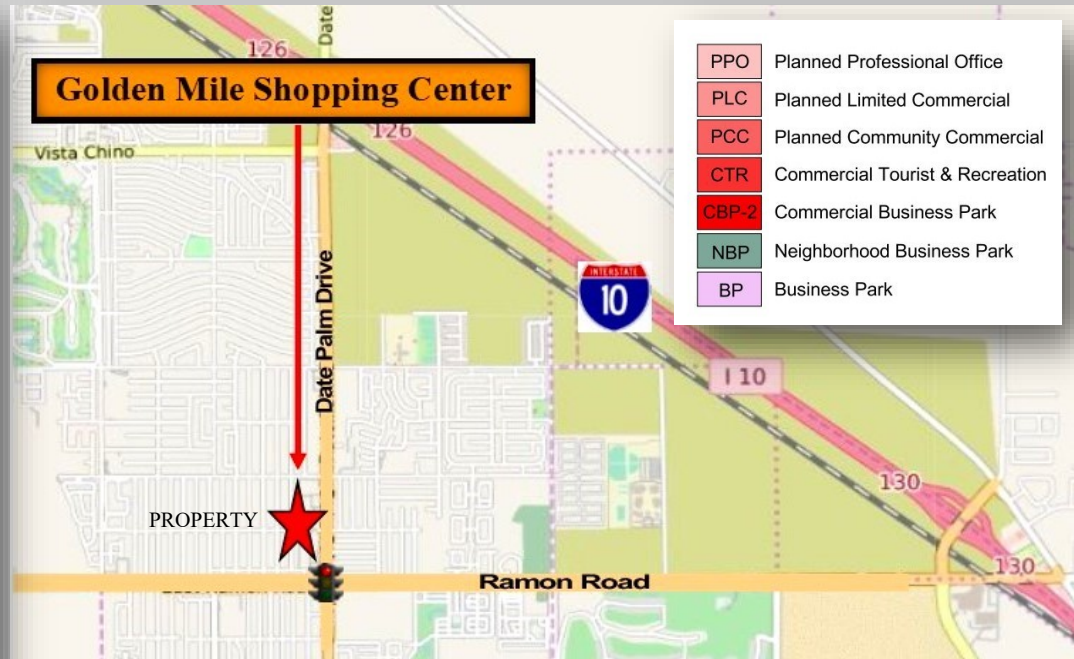
ZONING

Golden Mile Shopping Center



Zoning Map

LOCATION MAP



ZONING INDEX

PPO	Planned Professional Office
PLC	Planned Limited Commercial
PCC	Planned Community Commercial
CTR	Commercial Tourist & Recreation
CBP-2	Commercial Business Park
NBP	Neighborhood Business Park
BP	Business Park

Permitted Uses Zoning Table: Planned Community Commercial
Date Palm Drive and Ramon Road, is considered Cathedral City's main corridor.



Doug Montgomery
760-318-7484 Ext. 223 / Lic. 01435021
doug@spinellocommercialrealestate.com

31375 to 31755 Date Palm Drive
Cathedral City, Ca
Easy access to Interstate 10

The information contained herein has been obtained by sources we believe to be reliable. While we have verified it we make no guarantee, warranty or representation about it.

Site Plan



Doug Montgomery
760-318-7484 Ext. 223 / Lic. 01435021
doug@spinellocommercialrealestate.com

31505 Date Palm Drive
Cathedral City, Ca
Easy access to Interstate 10

The information contained herein has been obtained by sources we believe to be reliable. While we have verified it we make no guarantee, warranty or representation about it.