

**±6,000 SF Available**  
**Subdividable to ±2,000 SF**  
**Lease Rate: Upon Request**

**Property Highlights**

- New retail pad building in Centre of New England
- Liquor store anchored with great sight lines and access
- Strong parking field
- Excellent retail synergy with Walmart, BJ's, Home Depot, Wendy's, T-Mobile, Cracker Barrel, Applebee's, Marriott, Holiday Inn, Hampton Inn
- Direct access to I-95

**Traffic**

I-95 70,000 adt

DEMOS	Population	Med. HH Income	Daytime Pop (Total)
3 miles	35,584	\$70,454	28,036
5 miles	80,580	\$74,233	71,794
7 miles	133,406	\$76,794	124,814

**NEW RETAIL PAD BUILDING AVAILABLE**



For more information, please contact:

**Bill Greene**  
 Partner  
 401.273.7429  
 bgreene@hayessherry.com

146 Westminster Street, 2<sup>nd</sup> floor  
 Providence, RI 02903  
 phone: 401 273 1980  
 www.hayessherry.com



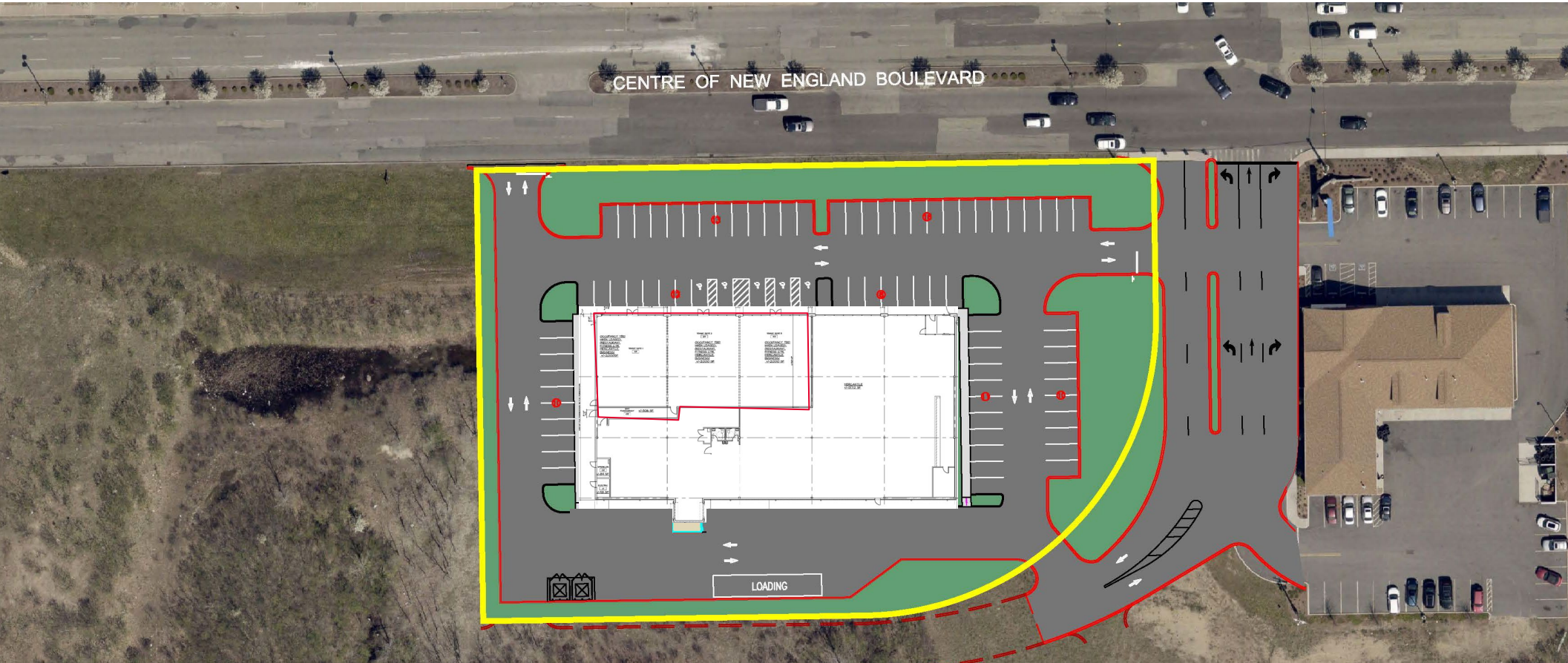


HAYES & SHERRY

FOR LEASE

751 Centre of New England

West Greenwich, RI



**PROPOSED CONDITIONS**