



SAN FRANCISCO, CA 94107

# 55 Potrero Ave

FOR LEASE

+/- 10,000 SF AVAILABLE  
Renovated Flex / R&D H.Q. Building in Potrero Hill

TREVOR GUDIM | [trevor@calco-sf.com](mailto:trevor@calco-sf.com) | 858.922.2632 | DRE #01979980

CHARLES WILLIAMS | [charles@calco-sf.com](mailto:charles@calco-sf.com) | 916.757.3154 | DRE #02244143

CADEN THOMPSON | [caden@calco-sf.com](mailto:caden@calco-sf.com) | 916.316.1040 | DRE #02244574

# PROPERTY OVERVIEW

| 55 Potrero Ave

## SPACE

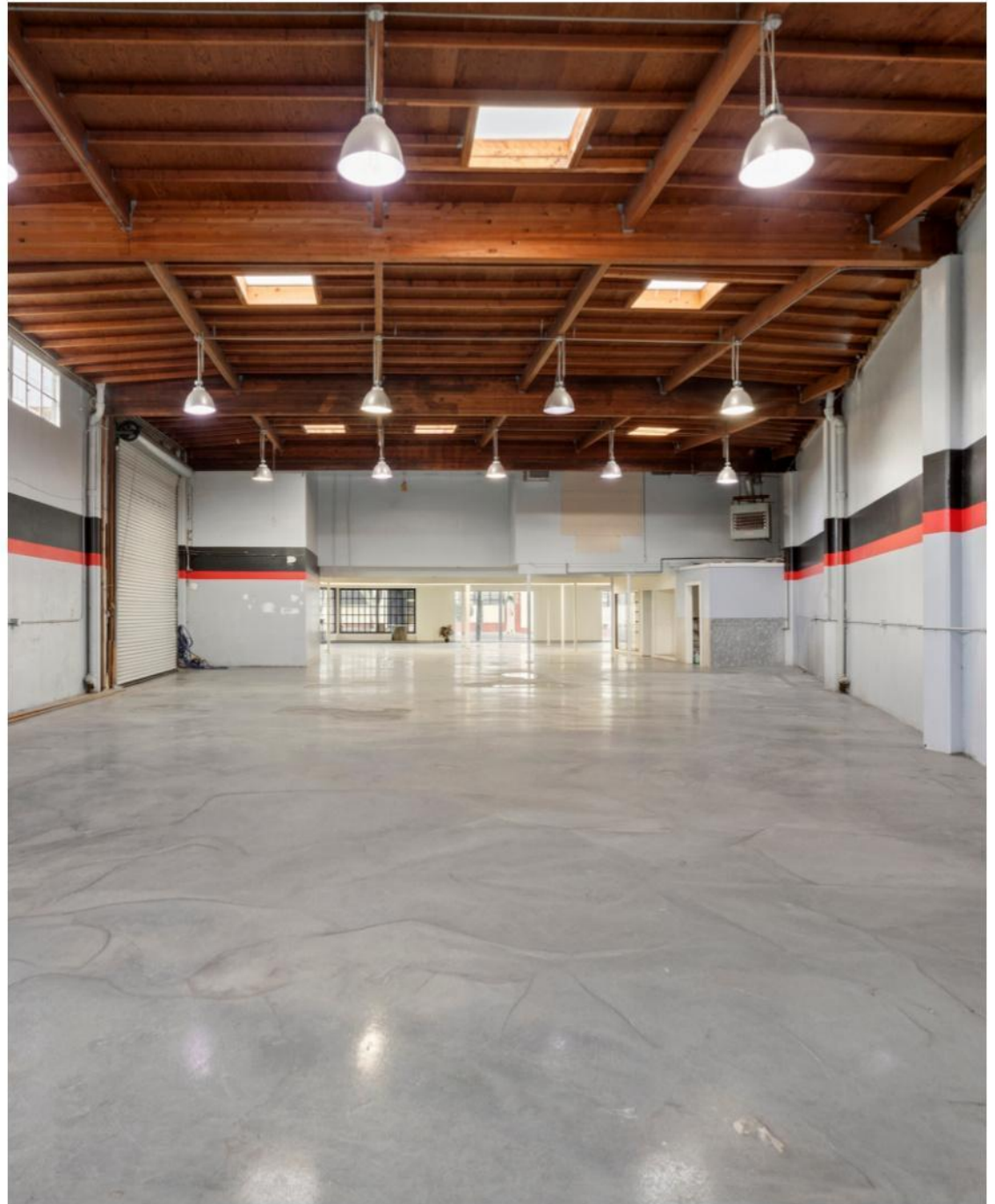
+/- 10,000 SF Available

## ASKING RENT

\$55 / Sq. ft., Industrial Gross

## BUILDING ATTRIBUTES

- Renovated Flex / R&D H.Q. Building
- 2,500 Sq. Ft. of Creative Office
- 14' 7" Drive-In Door
- Three (3) Meeting Rooms (Ability to Add More)
- Twelve (12) Large Skylights
- Heavy Power on Site
- 18' Ceiling Heights
- Clear Span Space
- Secure Parking for 2-3 Vehicles
- Floor Drains
- Fantastic Signage / Branding Opportunities



GALLERY  
| 55 Potrero Ave



GALLERY  
| 55 Potrero Ave

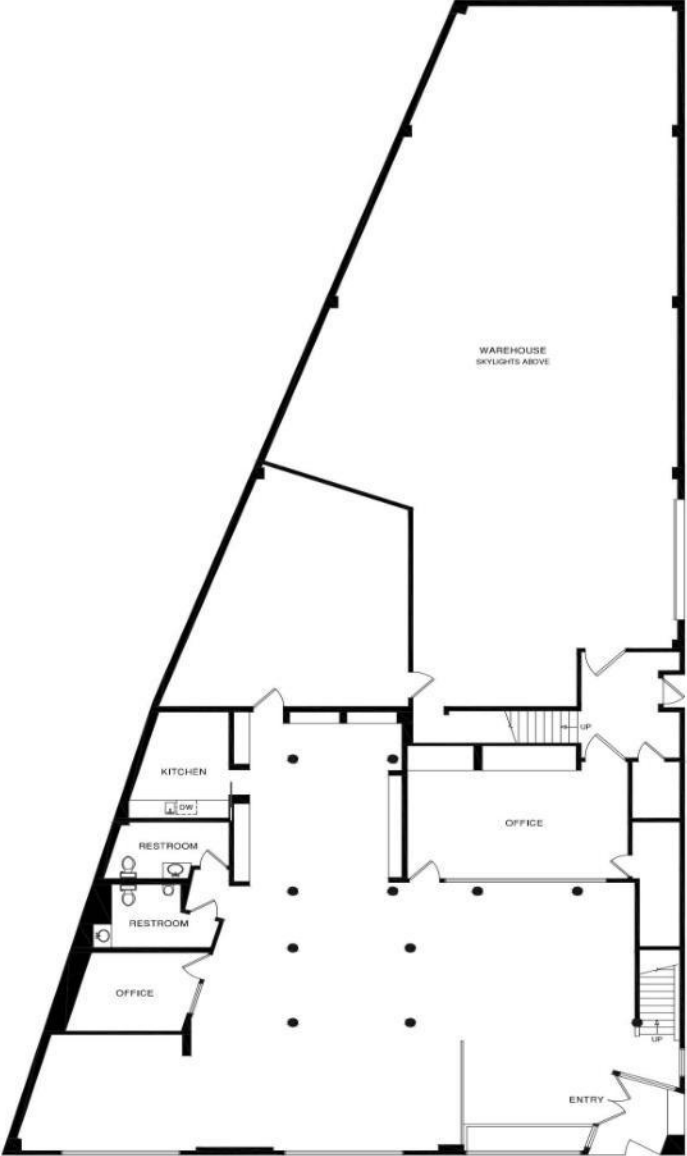


GALLERY  
| 55 Potrero Ave



# FLOORPLANS

| 55 Potrero Ave



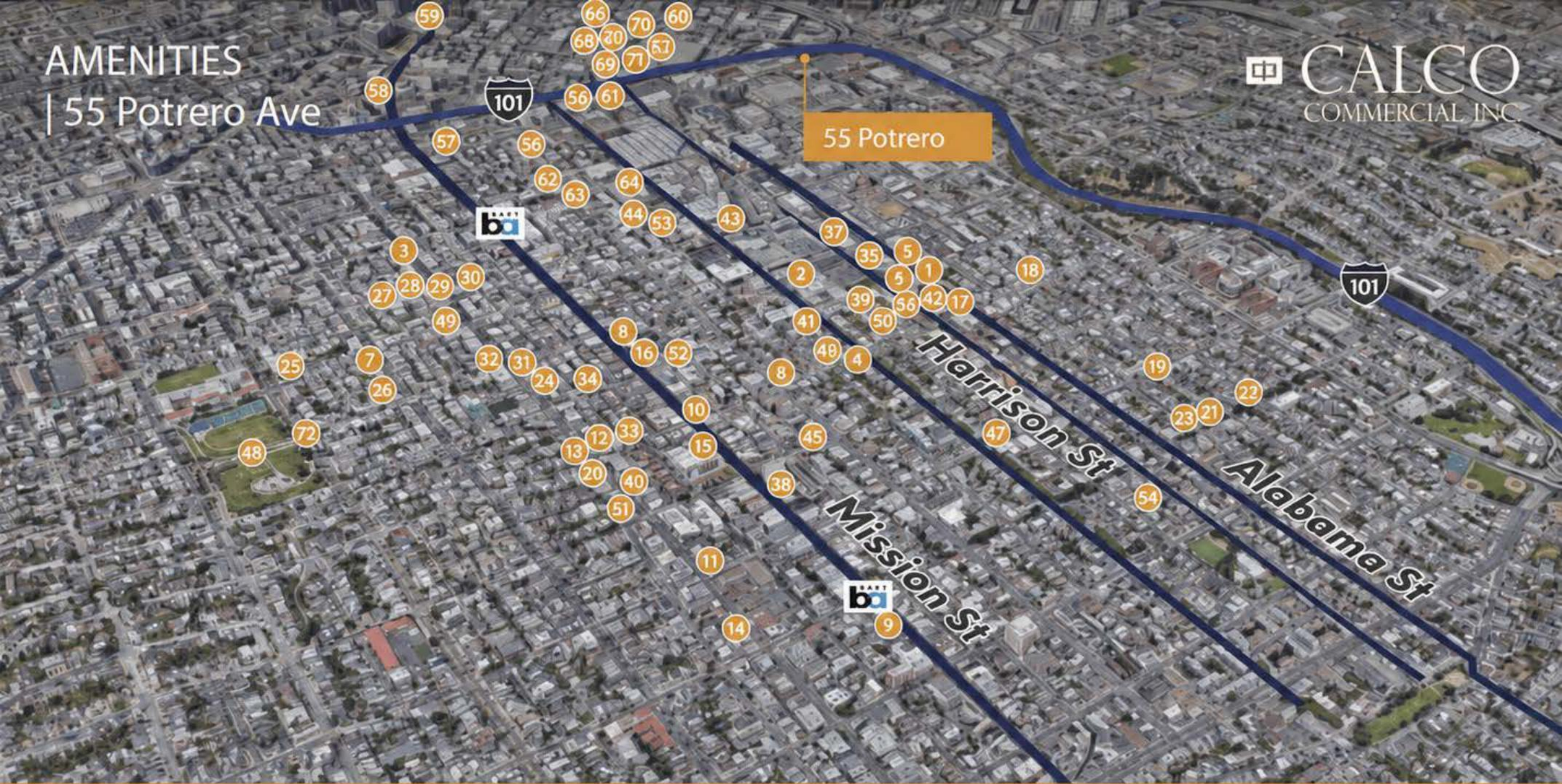
Ground floor



2nd floor

# AMENITIES

| 55 Potrero Ave



- |                            |                  |                              |                               |                          |                            |
|----------------------------|------------------|------------------------------|-------------------------------|--------------------------|----------------------------|
| 1 Atlas Cafe               | 13 Senor Sisig   | 25 Bi-rite market            | 37 Mission Cliffs             | 49 PanIQ Escape Room     | 61 Rainbow grocery         |
| 2 Southern Pacific Brewery | 14 Barzotto      | 26 Tartine Bakery            | 38 Max Fitness Crossfit       | 50 Mission Arts Center   | 62 16th street Bart        |
| 3 Limon Rotisserie         | 15 Bear Vs. Bull | 27 The Monks Kettle          | 39 Movement Lab               | 51 The Mars              | 63 Slate                   |
| 4 Flour + Water            | 16 Dr. Teeth     | 28 Cream                     | 40 Burn SF                    | 52 Alioto Park           | 64 Mission Bowling Club    |
| 5 True Laurel              | 17 Bon Nene      | 29 Limon Rotisserie          | 41 Moxie: 20th Street         | 53 CDC Theater           | 65 DNA lounge              |
| 6 Heirloom Cafe            | 18 Asiento       | 30 Bond Bar                  | 42 Golden Gate Fencing Center | 54 Balmy Alley           | 66 Sextant coffee roasters |
| 7 Tartine                  | 19 Spice Jar     | 31 Boba Guys Mission         | 43 Soul Sanctuary             | 55 Foodsco               | 67 Slim's                  |
| 8 Barrel Proof             | 20 LoLo          | 32 Project Juice             | 44 Mission Bowl               | 56 Nihon Whiskey lounge  | 68 Audio Nightclub         |
| 9 Rosamunde                | 22 Zita Wine Bar | 33 Valencia Whole Foods      | 45 Urban Putt                 | 57 The armory Club       | 69 Wish                    |
| 10 Myriad Gastropub        | 23 Sake Bomb     | 34 Garden Creamery           | 46 Jose Coronado Park         | 58 Public works Club     | 70 V Café                  |
| 11 Berett a                | 24 Amnesia       | 35 Hit Fit SF                | 47 Parque Ninos Unidos        | 59 Cats head BB Q        | 71 Butter                  |
| 12 Mission Picni c         |                  | 36 Mission Recreation Center | 48 Mission Dolores Park       | 60 Soma Streat Food Park | 72 Tartine bakery          |

# SURROUNDING TENANTS

| 55 Potrero Ave





#### TREVOR GUDIM

Executive Vice President  
Email: [trevor@calco-sf.com](mailto:trevor@calco-sf.com)  
Cell: 858.922.2632  
DRE #01979980

#### CHARLES WILLIAMS

Associate  
Email: [charles@calco-sf.com](mailto:charles@calco-sf.com)  
Cell: 916.757.3154  
DRE #02244143

## PIONEERING REAL ESTATE SOLUTIONS WITH PROVEN EXPERTISE

#### CADEN THOMPSON

Associate  
Email: [caden@calco-sf.com](mailto:caden@calco-sf.com)  
Cell: 916.316.1040  
DRE #02244574

Calco Commercial, founded in 2011 by Scott Mason, brings over 35 years of experience and 2,500+ transactions, totaling over \$2.2 billion in sales and leases. Specializing in leasing and sales of commercial real estate in the San Francisco Bay Area and nationwide, we consistently rank as a top-producing firm. With deep knowledge of the Bay Area market, our team offers clients over three decades of expertise and exceptional customer service, providing the tools and guidance to navigate the ever-changing commercial real estate landscape.