

753 SANTA FE DRIVE

A RENOVATED, HISTORIC 1919 INDUSTRIAL BAKERY IN THE HEART OF THE ARTS DISTRICT

SPACES DESIGNED FOR:

RESTAURANT
RETAIL
OFFICE
STUDIOS
EVENTS

FLEXIBLE USE SPACES:

BASEMENT (4000 sf)
FIRST FLOOR (7000 sf)
WEST PATIO (470 sf)
SECOND FLOOR (7000 sf)
SECOND FLOOR DECK (186 sf)

BASEMENT UNIT

Total = 4000 sf

FIRST FLOOR

Unit A 4,350
Unit B 2,650
Total = 7,000 sf

SECOND FLOOR

Unit C 3,020
Unit D 1,660
Unit E 2,320
Total = 7,000 sf



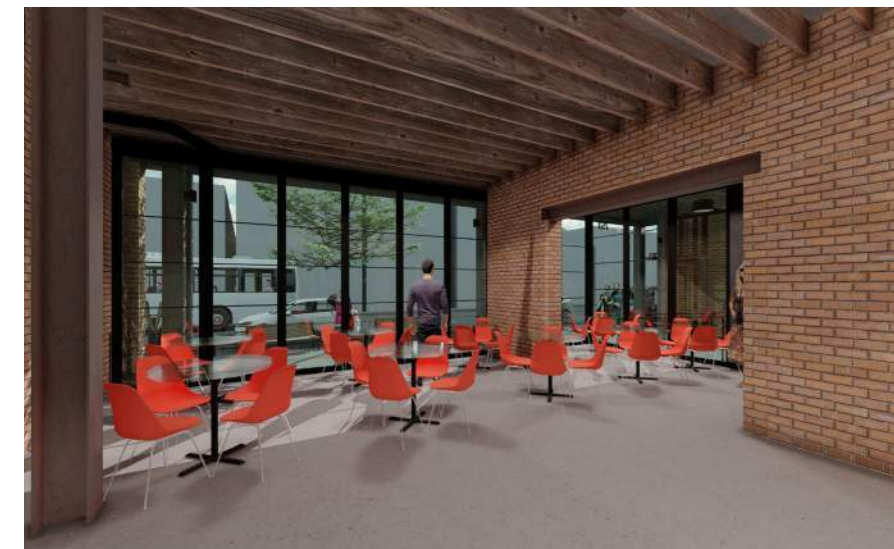
First Floor Entry



View from Santa Fe Drive



Entry Space to 753



Interior at First Floor



View Looking South on Santa Fe Drive



View from Second Floor



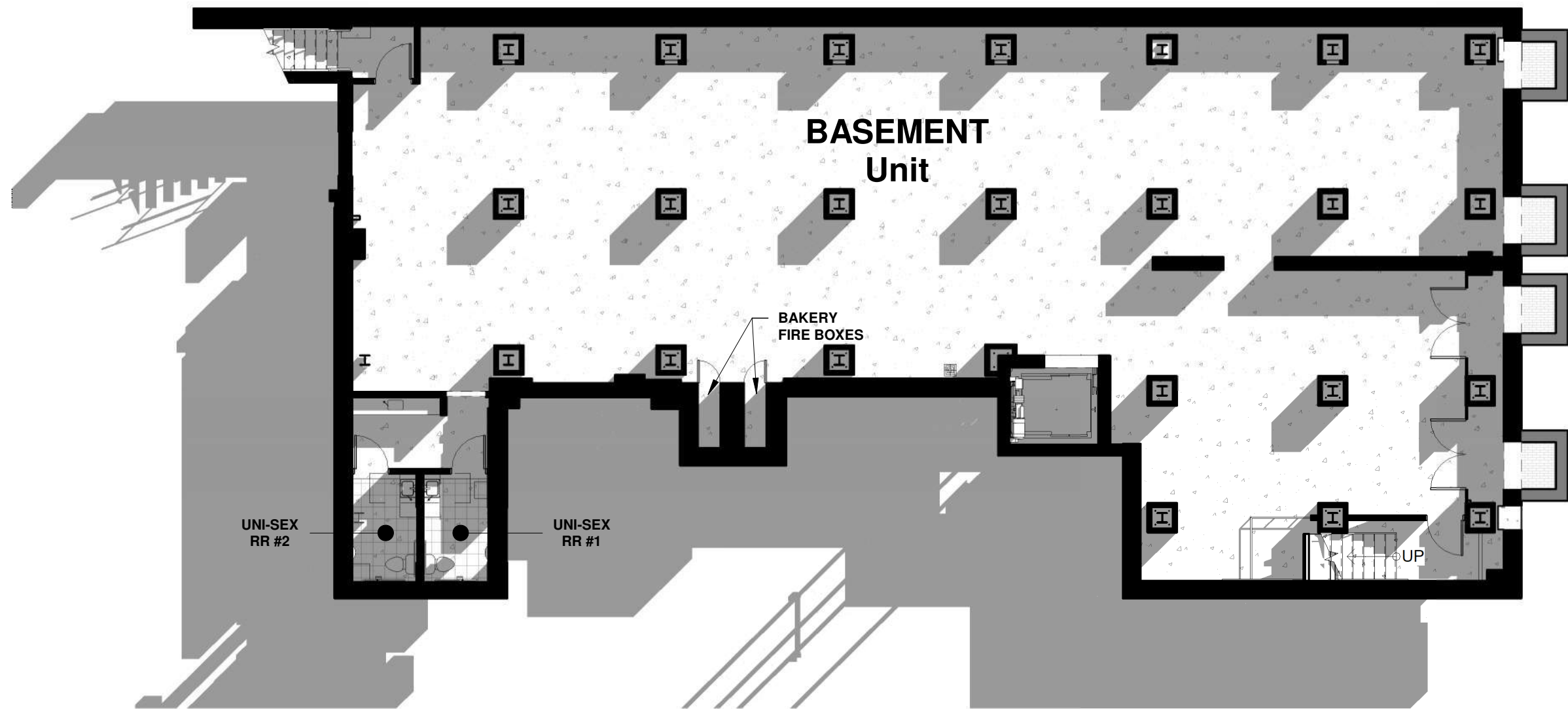
View Along Santa Fe Drive



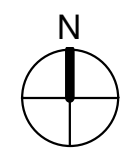
West Patio View

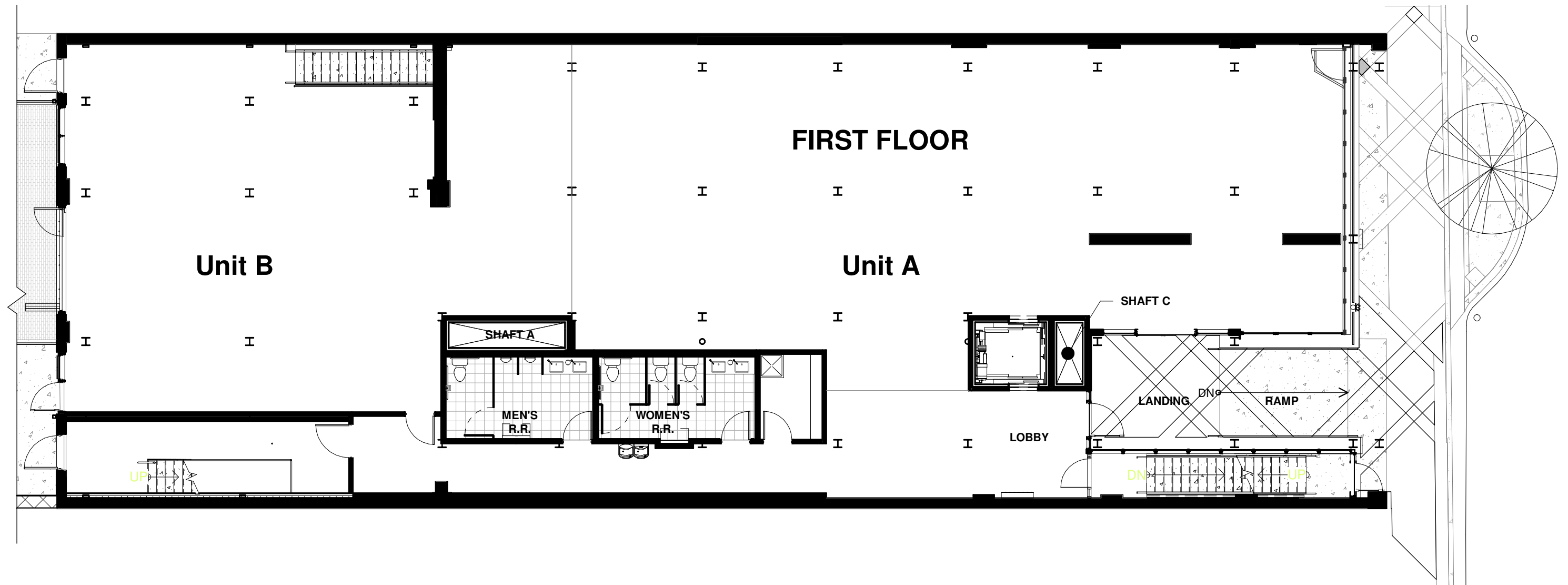


West Patio View



BASEMENT FLOOR PLAN





FIRST FLOOR

Unit B

Unit A

SHAFT A

MEN'S R.R.

WOMEN'S R.R.

LOBBY

SHAFT C

LANDING

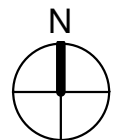
RAMP

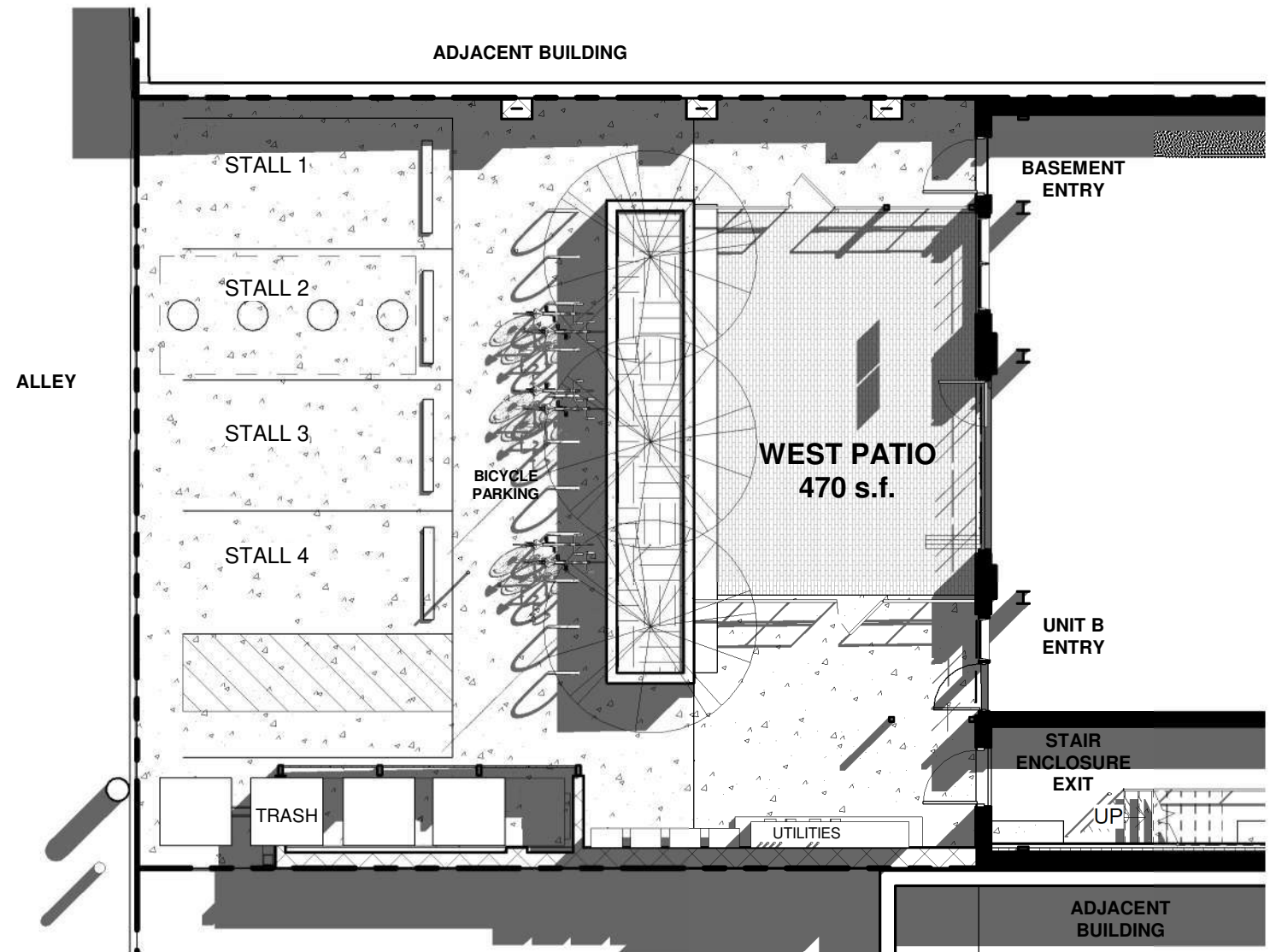
UP

DN

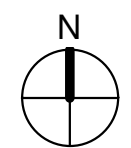
UP

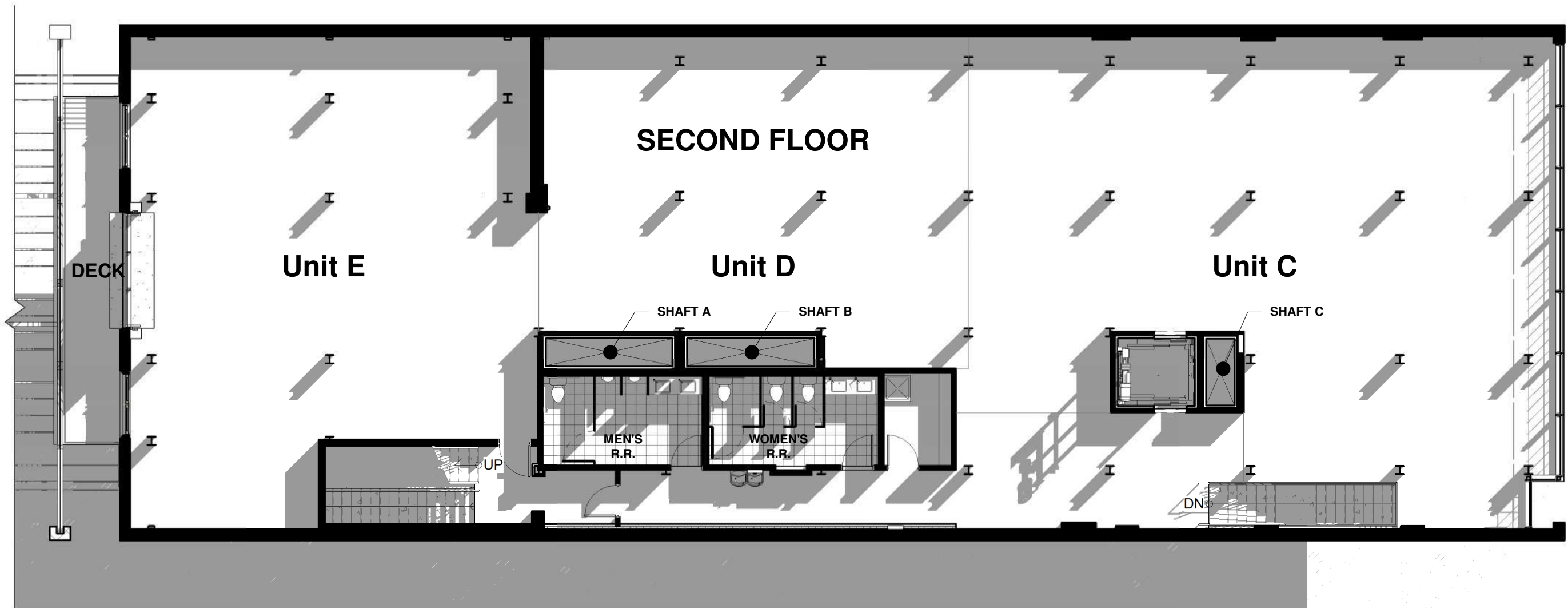
FIRST FLOOR PLAN



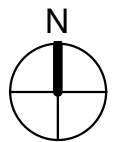


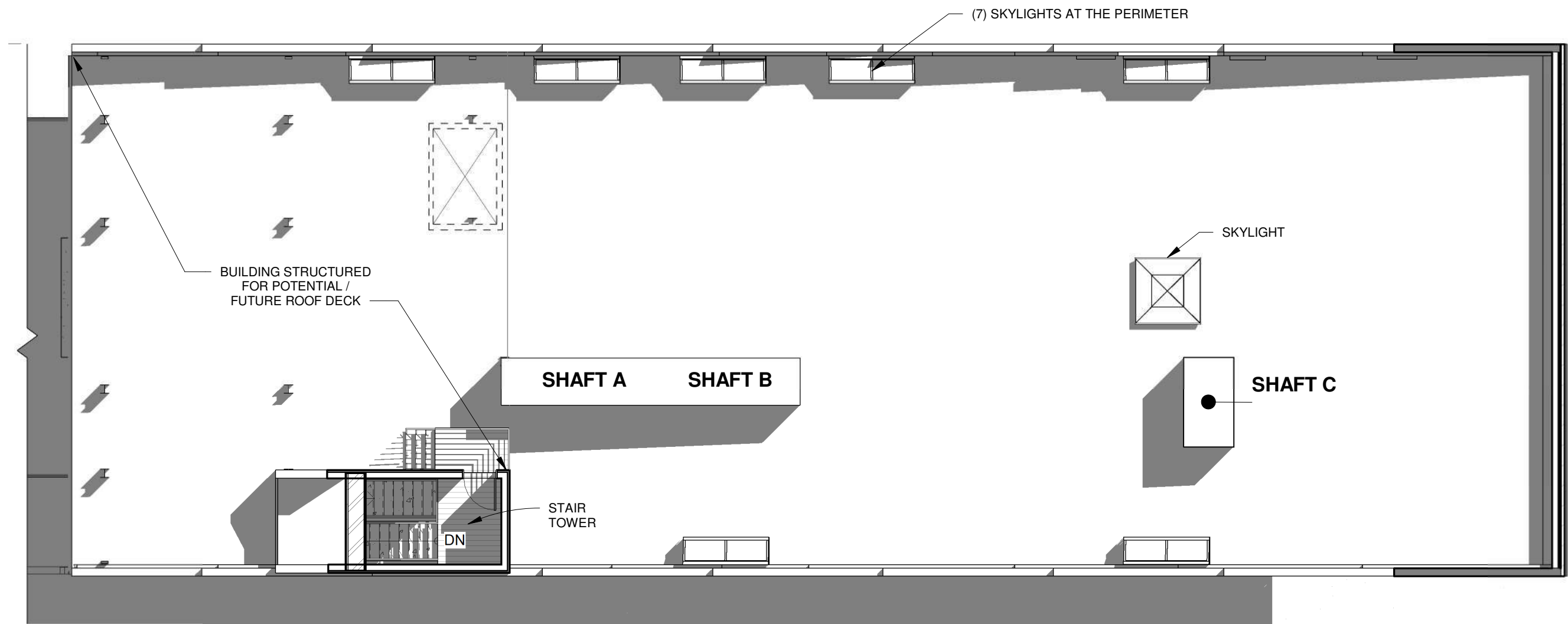
WEST PATIO PLAN





SECOND FLOOR PLAN





ROOF PLAN

