

7959 Drew Circle

Fort Myers, FL 33968

33,500 SF - AVAILABLE FOR LEASE
CALL FOR LEASE RATE!



Building Features

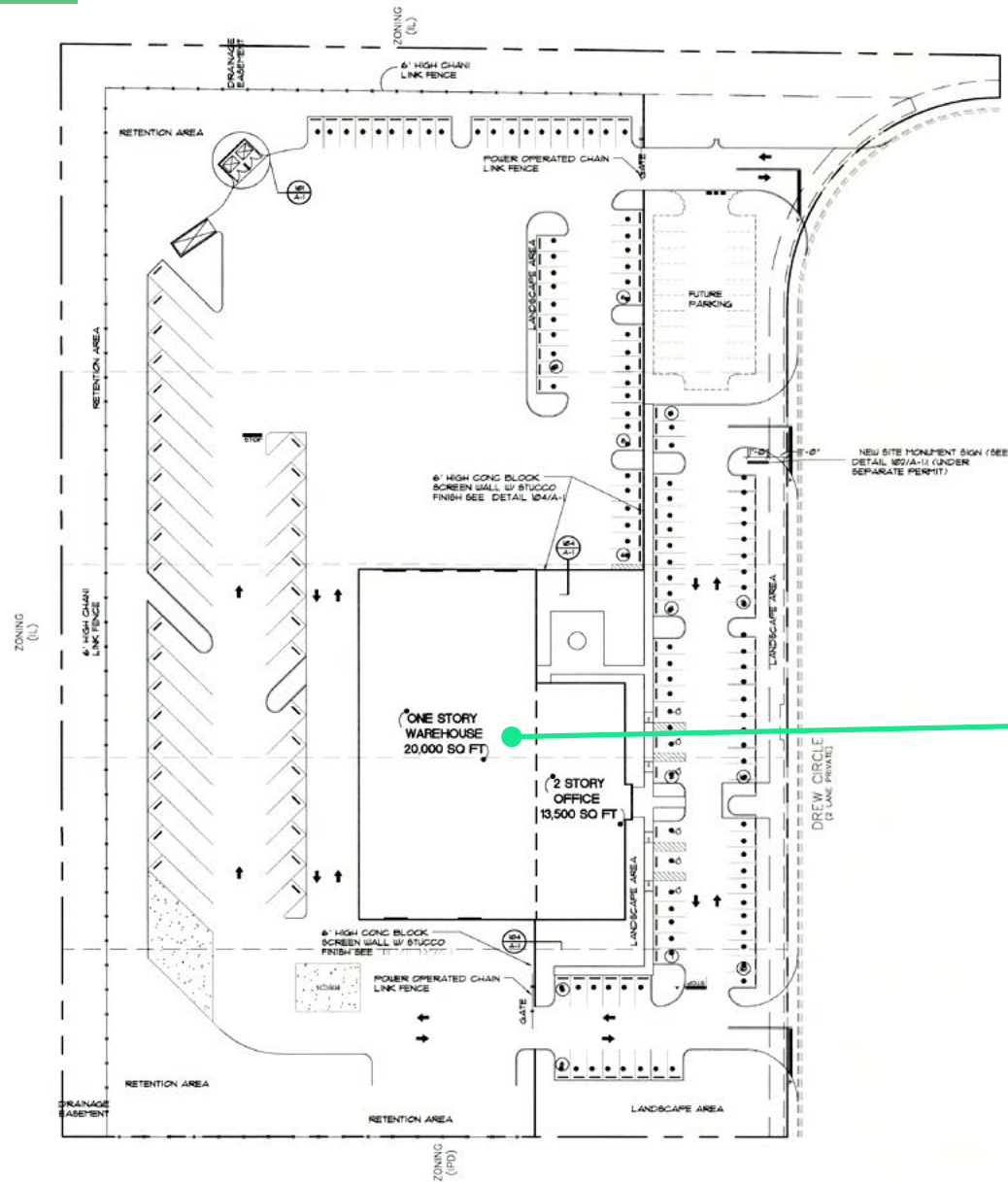
- + Total building size: 33,500 SF
- + 20,000 SF warehouse
- + 2-story 13,500 SF office
 - Two conference rooms and a separate training room
- + 6 total acres
- + IPD zoning
- + 2 - 18'x12' overhead doors
- + 6 - 16'x12' overhead doors
- + 26' clear height
- + Warehouse office
- + 5 office restrooms, 1 warehouse restroom
- + Concrete block fenced and lit yard
- + Power operated gates for security
- + 2 points of ingress/egress
- + Onsite above ground fuel storage for both unleaded and diesel
- + (153) total parking spaces between front office lot (69) and rear yard lot (84)

7959 Drew Circle

7959 Drew Circle | Fort Myers, FL 33968

For Lease

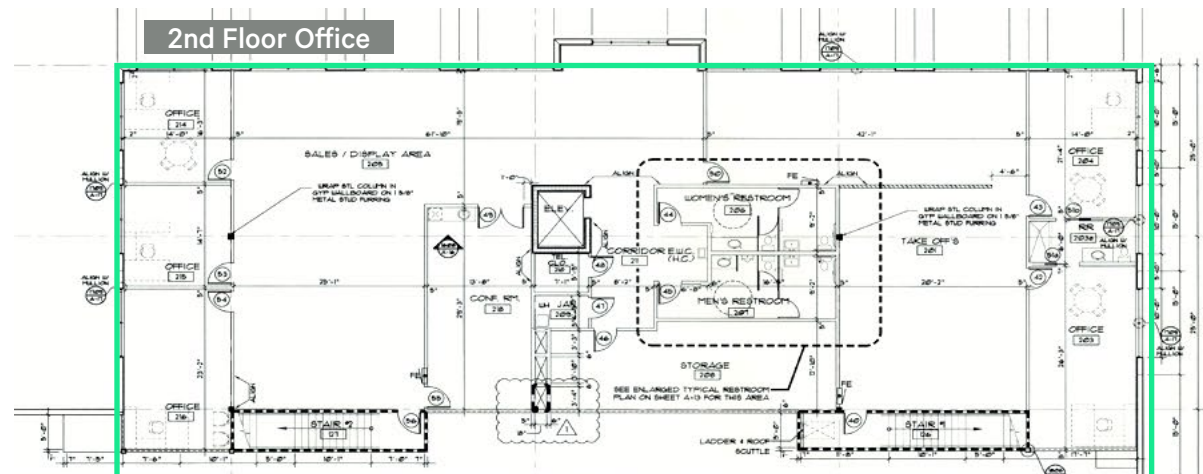
SITE PLAN



WAREHOUSE

7959 Drew Circle | Fort Myers, FL 33968

FLOOR PLAN



7959 Drew Circle

7959 Drew Circle | Fort Myers, FL 33968

For Lease

EXPANSIVE OUTDOOR SPACE



7959 Drew Circle

7959 Drew Circle | Fort Myers, FL 33968

For Lease

13,500 SF OFFICE SPACE



7959 Drew Circle

7959 Drew Circle | Fort Myers, FL 33968

For Lease



Contact Us

Adam Bornhorst, SIOR

Vice President

+1 239 789 6537

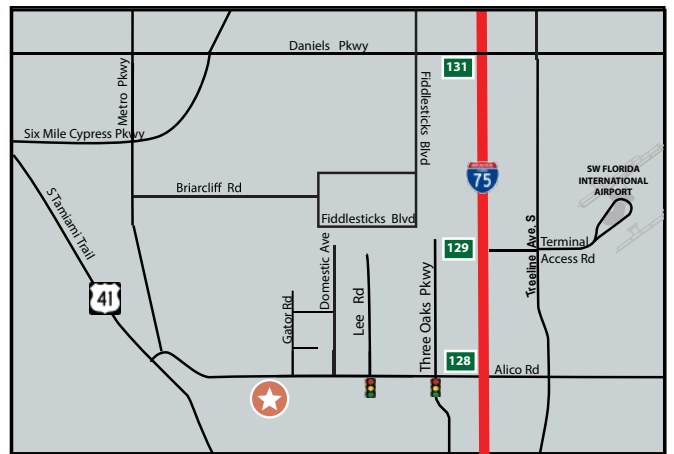
adam.bornhorst@cbre.com

Derek Bornhorst, SIOR, CCIM

Senior Vice President

+1 239 898 7987

derek.bornhorst@cbre.com



© 2025 CBRE, Inc. All rights reserved. This information has been obtained from sources believed reliable, but has not been verified for accuracy or completeness. You should conduct a careful, independent investigation of the property and verify all information. Any reliance on this information is solely at your own risk. CBRE and the CBRE logo are service marks of CBRE, Inc. All other marks displayed on this document are the property of their respective owners, and the use of such logos does not imply any affiliation with or endorsement of CBRE. Photos herein are the property of their respective owners. Use of these images without the express written consent of the owner is prohibited.

CBRE