



# WAREHOUSE FOR SUBLEASE

**Sublease Thru 7/31/2026: Longer Term Direct With Landlord**

## Building Highlights

Total Building SF:	107,800
Available SF:	36,460
Office SF:	+/-5,000
Site Size Acres:	6.68
Ceiling Height:	28'
Exterior Docks:	9
Drive-in Doors:	1
Sprinklers:	ESFR
Power:	400a; 480v
Auto Parking:	+/-34 Spots
Asking Rate:	\$13.75 psf Gross

**For more information, please contact:**

### **Brian Colson**

Principal, Industrial Services  
brian.colson@avisonyoung.com  
+1 312 259 1577

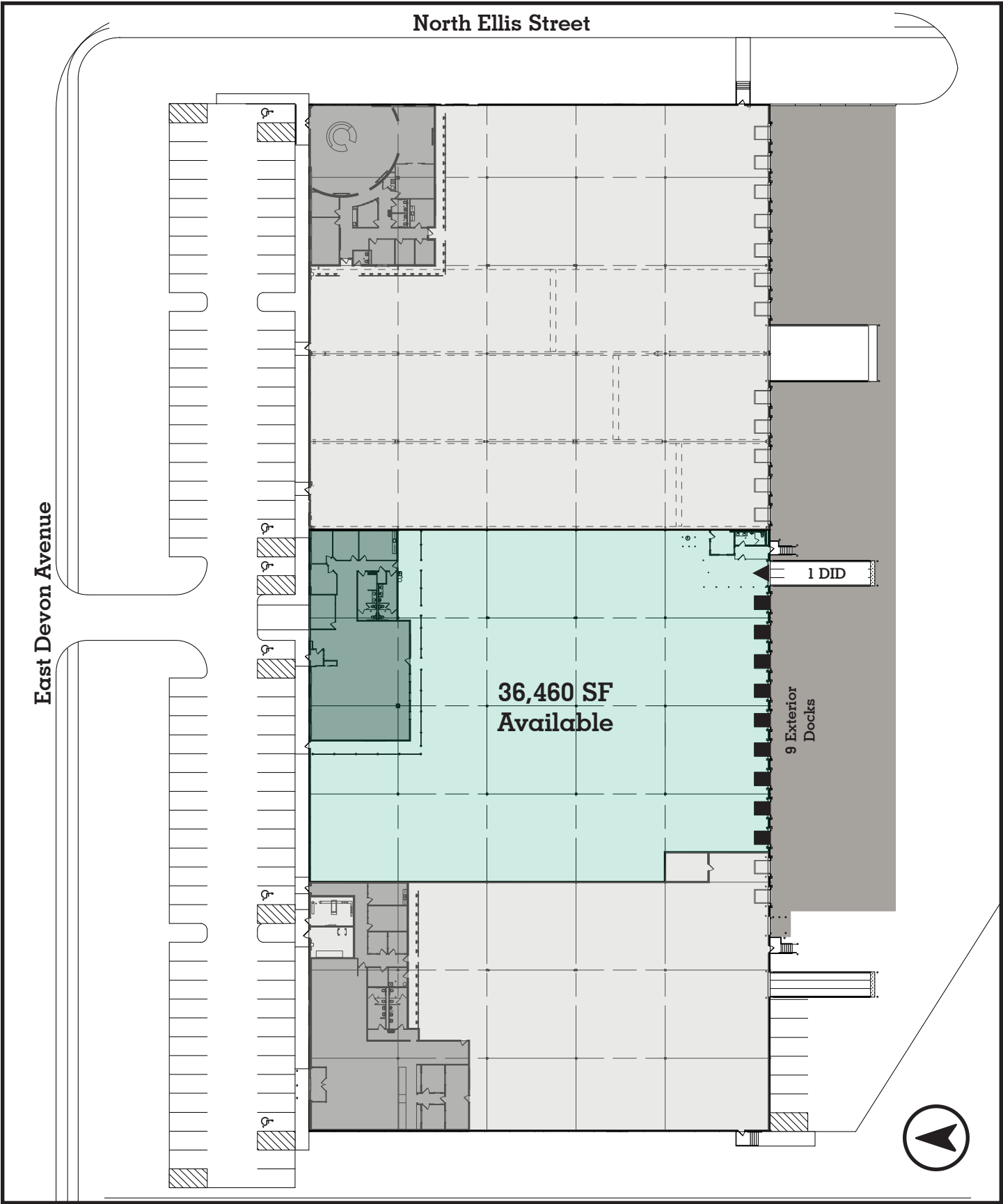
### **Brian Pomorski**

Principal, Industrial Services  
brian.pomorski@avisonyoung.com  
+1 708 912 2807

# Site Plan

## 36,460 SF

Warehouse  
860 Devon Avenue  
Bensenville, IL



## ACCESS MAP



For more information, please contact:

**Brian Colson**  
Principal, Industrial Services  
brian.colson@avisonyoung.com  
+1 312 259 1577

**Brian Pomorski**  
Principal, Industrial Services  
brian.pomorski@avisonyoung.com  
+1 708 912 2807

**AVISON  
YOUNG**

If you would like more  
information on our  
capabilities please  
get in touch.

**Brian Colson**

Principal, Industrial Services

D +1 847 886 0228

C +1 312 259 1577

[brian.colson@avisonyoung.com](mailto:brian.colson@avisonyoung.com)

**Brian Pomorski**

Principal, Industrial Services

D +1 847 232 8612

C +1 708 912 2807

[brian.pomorski@avisonyoung.com](mailto:brian.pomorski@avisonyoung.com)

---

**AVISON  
YOUNG**

---