



La Jolla Office Space For Lease

6800-6830 La Jolla Blvd, La Jolla, CA 92037



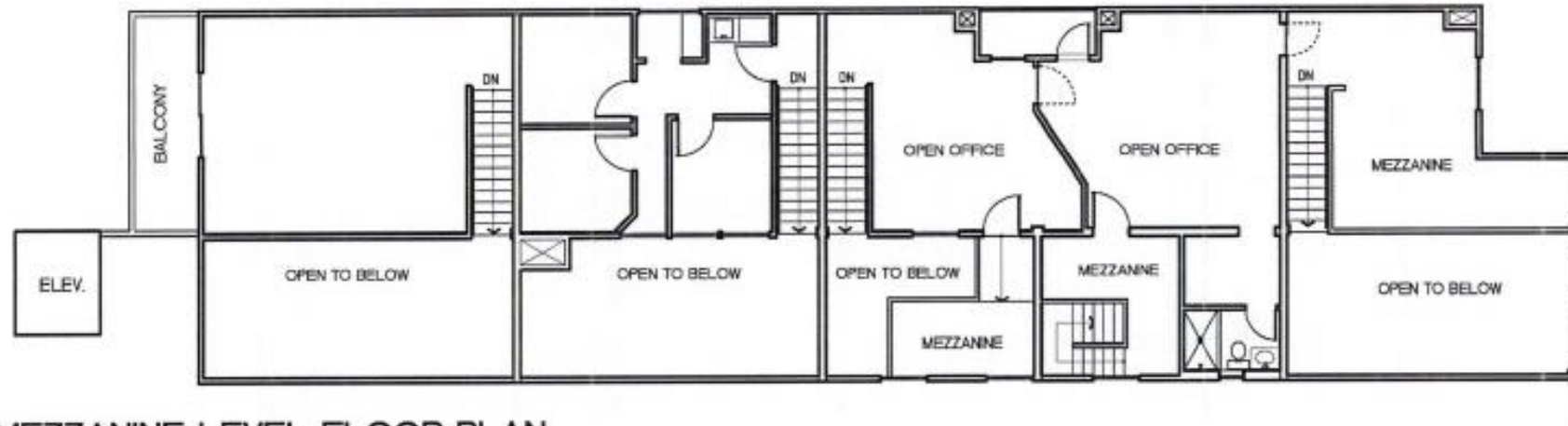
6800-6830 La Jolla Blvd

Windansea

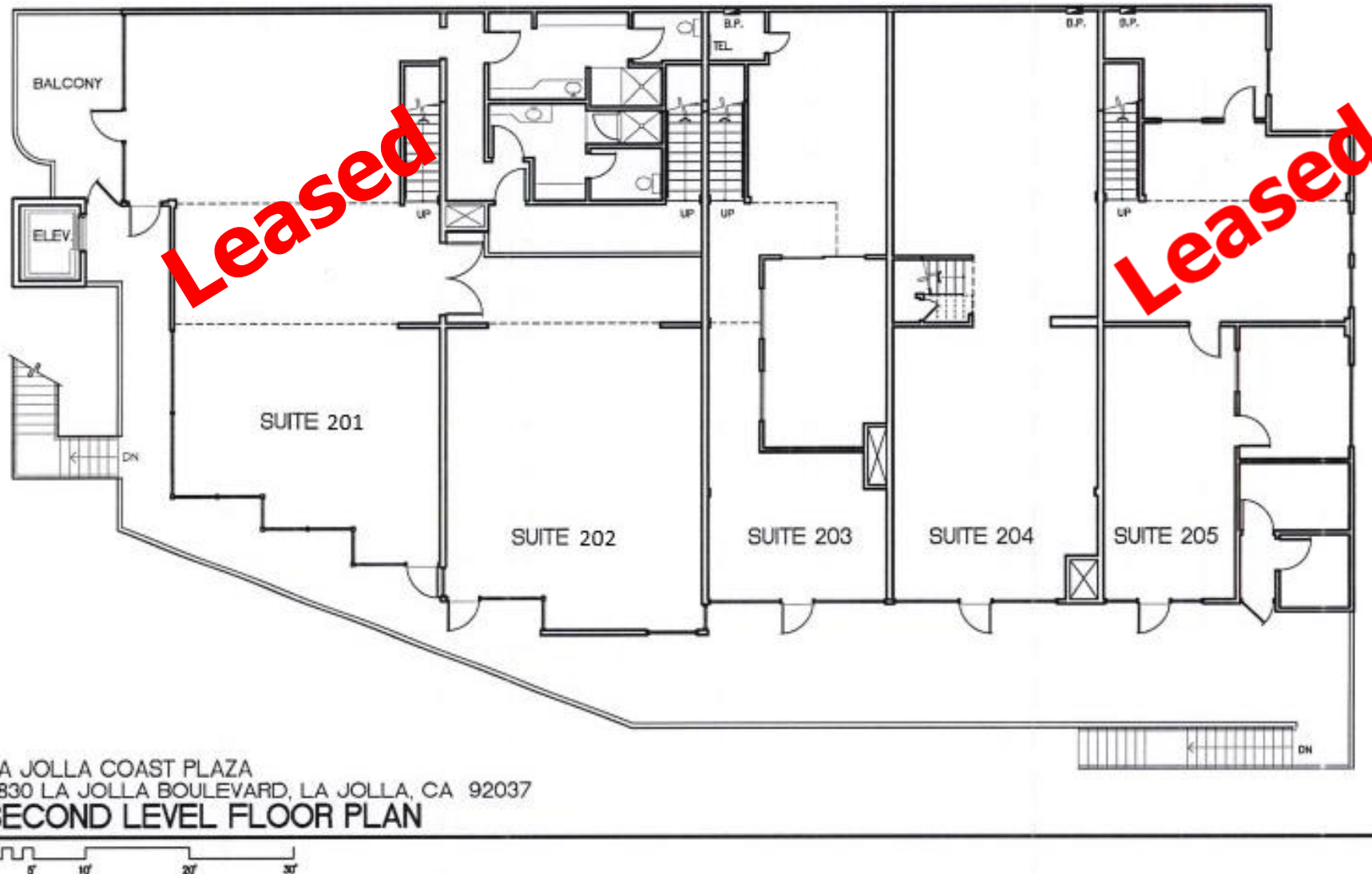
Windansea is picturesque coastline with white sandy beaches and sandstone points extending into the ocean. This neighborhood sits in between Bird Rock and La Jolla Village.

6800-6830 La Jolla Blvd lies in the heart of Windansea just off the main thoroughfare of La Jolla Blvd. Onsite dining options include Nautilus Tavern and Rosemont's Café. Directly next door and walking distance options are Valley Farms Market, Promiscuous Fork, Taco Stand, El Pescador and Verdes El Rancho. Enjoy the ocean view decks or take a short walk down to the beach.

area



MEZZANINE LEVEL FLOOR PLAN



LA JOLLA COAST PLAZA
6830 LA JOLLA BOULEVARD, LA JOLLA, CA 92037
SECOND LEVEL FLOOR PLAN

Available:

- **202 (+/-1,807 SF)**
- **203 (+/-1,327 SF)**

*Suites 202 & 203 currently combined

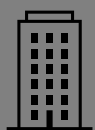
- **204 (+/-1,622 SF)**

Asking Rent \$2.25 – 2.50 + Utilities

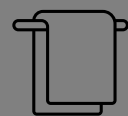
Suite 202 & 203 +/- 3,134 SF

- Mix of open bullpen, private offices and reception
- Restrooms with showers in place
- Asking Rent \$2.50 + Utilities





Approximately 12,337 rentable SF



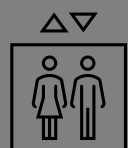
Common Area Restrooms



26 parking spaces available in garage



Walking distance to Windansea beach



Elevator served



Onsite restaurants include Nautilus Tavern & Rosemont's Cafe

building



Disclaimer - This document has been prepared by Next Wave Commercial Real Estate, Inc. for advertising and general information only. The information included has been obtained from sources believed to be reliable, and while we do not doubt its accuracy, we have not verified it and make no guarantees, representations or warranties of any kind, expressed or implied, regarding the information including, but not limited to, warranties of content, accuracy and reliability. Any projections, opinions, assumptions or estimates used are for example only and do not represent the current or future performance of the property. Any interested party with their advisor(s) should conduct a careful, independent investigation of the property to determine to your satisfaction the suitability of the property for their needs.

Cam Lacey

cam@nextwavecommercial.com
CA Lic. #01955796

Next Wave Commercial
1167 Morena Blvd.
San Diego, CA 92110
CA Lic. #02010077

619.326.4400

contact

nextwavecommercial.com

