

# BALTON COMMONS

263-267 W 126TH ST  
NEW YORK, NEW YORK

BLOCK: 1932 LOT: 5.78 107

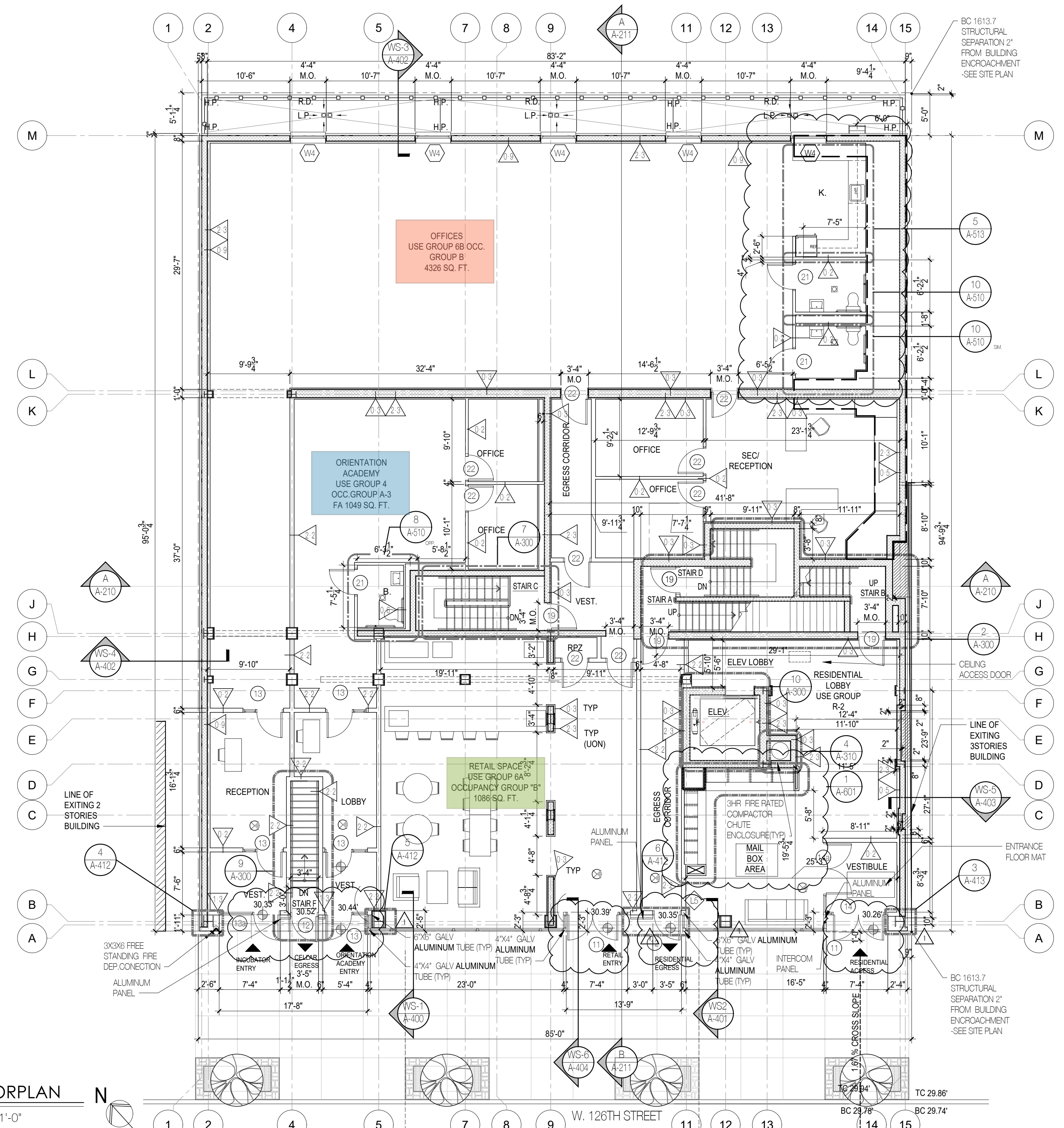
**ARCHITECT:**  
AUFGANG ARCHITECTS LLC  
74 LAFAYETTE AVENUE - SUITE 301  
SUFFERN, NY 10901  
INFO@AUFANG.COM 845.368.0004

**DEVELOPER:**  
APEX BUILDING GROUP  
51 EAST 125TH STREET, 3RD FL  
NEW YORK NY 10035  
KEN@LEMONDEV.COM  
(212) 281-2714

**STRUCTURAL ENGINEER:**  
BROOKER ENGINEERING  
74 LAFAYETTE AVENUE  
SUFFERN, NY 10901  
845-357-4411

**MEP ENGINEER:**  
JOHNSON & URBAN  
295 ROUTE 94  
COLTS NECK NJ 07722

# AUFANG ARCHITECTS



**1ST FLOOR PLAN**  
SCALE: 1/8" = 1'-0"

**WALL TYPE LEGEND:**

- NON RATED**
  - CHASE WALL - (1) LAYER 5/8" TYPE "X" GYPSUM BOARD ONE SIDE OF 2 1/2" METAL STUDS @ 16" O.C.
  - TYPICAL PARTITION - (1) LAYER 5/8" TYPE "X" GYPSUM BOARD ON EACH SIDE OF 2 1/2" METAL STUDS @ 16" O.C. 3/8" METAL STUDS AT 1ST FLOOR ONLY
  - FURRING AT INTERIOR CMU WALL (APARTMENT SIDE) - (1) LAYER 5/8" TYPE "X" GYPSUM BOARD OVER 1 1/2" Z METAL FURRING @ 16" O.C.
  - PARTITION - (1) LAYER OF 5/8" TYPE "X" GYPSUM BOARD, ON EACH SIDE OF 3 3/8" METAL STUDS @ 16" O.C. (@ APARTMENT ELECTRICAL PANEL)
  - FURRING AT EXTERIOR CMU WALL - (1) LAYER 5/8" TYPE "X" GYPSUM BOARD ON 3 3/8" GALV. METAL STUDS @ 16" O.C. OVER 1" (R-4.2) MINERAL WOOL INSULATION
  - BATHROOM CHASE WALL PARTITION - (1) LAYER 5/8" TYPE "X" WATER RESISTANT GYPSUM BOARD ONE SIDE OF 2 1/2" METAL STUDS @ 16" O.C. PROVIDE R15 BATT INSULATION @ EXT. WALLS
  - FURRING AT INTERIOR CMU WALL (PUBLIC CORRIDOR SIDE) - (1) LAYER 5/8" TYPE "X" GYPSUM BOARD OVER 3/8" METAL FURRING CHANNELS @ 16" O.C.
  - FURRING AT EXTERIOR CMU WALL - (1) LAYER 5/8" TYPE "X" GYPSUM BOARD ON 3 3/8" GALV. METAL STUDS @ 16" O.C. WITH 31" (R-12) WOOL INSULATION
- 1 HOUR RATED**
  - 1 HOUR RATED TENANT SEPARATION CHASE WALL - (1) LAYER OF 5/8" TYPE "X" GYPSUM BOARD ON ONE SIDE OF 2 1/2" METAL STUDS @ 16" O.C. WITH 3 1/2" SOUND ATTENUATION INSULATION. EXTEND GYPSUM BOARD UP TO UNDERSIDE OF CONCRETE PLANK AND SEAL TIGHT TO UNDERSIDE OF CONCRETE PLANK AND/OR ROOF PLANK W/ CONT. FIRESTOP SEALANT & FIRESAFING INSULATION (GA FILE #WP-1052) (STC 50-54)
  - 1 HOUR RATED TENANT SEPARATION PARTITION - (1) LAYER OF 5/8" TYPE "X" GYPSUM BOARD ON ONE SIDE OF 2 1/2" METAL STUDS @ 16" O.C. WITH 3 1/2" SOUND ATTENUATION INSULATION. EXTEND GYPSUM BOARD UP TO UNDERSIDE OF CONCRETE PLANK AND/OR ROOF PLANK W/ CONT. FIRESTOP SEALANT & FIRESAFING INSULATION (GA FILE #WP-1052) (STC 50-54)

- 1 HOUR RATED EXTERIOR PARTITION - (2) LAYERS OF 1/2" TYPE "X" GYP. BOARD (INSIDE) 1/2" EXP EXTERIOR GYP. BOARD SHEATHING (OUTSIDE) OVER 3 3/8" GALV. METAL STUDS @ 16" O.C. WITH 3 1/2" BATT INSULATION (UNFACED) (UL #424)
- 2 HOUR RATED EXTERIOR PARTITION - (2) LAYERS OF 3/4" TYPE "X" GYPSUM BOARD (INSIDE) 1/2" EXP EXTERIOR GYPSUM BOARD SHEATHING (OUTSIDE) OVER 3 3/8" GALV. METAL STUDS @ 16" O.C. WITH 3 1/2" BATT INSULATION (UNFACED) (R-15) (UL-424)
- 2 HOUR RATED INTERIOR PARTITION - (2) LAYERS 5/8" TYPE "X" GYPSUM BOARD ON EACH SIDE OF 3 3/8" METAL STUDS @ 16" O.C. WITH 3 1/2" SOUND ATTENUATION INSULATION. EXTEND GYPSUM BOARD UP TO UNDERSIDE OF FLOOR PLANK OR ROOF PLANK. SEAL TIGHT TO UNDERSIDE OF FLOOR PLANK W/ CONT. FIRESTOP SEALANT & FIRESAFING. (GA FILE #WP-1522 STC 55-59)
- 2 HOUR RATED CMU WALL - CMU WITH CONT. GALVANIZED HORIZONTAL TRUSS TYPE REINFORCING AT ALTERNATE BLOCK COURSES. SEAL TOP OF CONCRETE/PLANK BLOCK WALL TIGHT TO UNDERSIDE OF CONCRETE/PLANK ABOVE WITH CONT. FIRESTOP SEALANT AND FIRESAFING INSULATION WHERE GAP EXIST. BETWEEN TOP OF WALL AND BOTTOM OF PLANK (UL #906)
- 2 HOUR RATED MECHANICAL SHAFT WALL - (2) LAYERS OF 1/2" TYPE "X" GYPSUM BOARD ON ONE SIDE OF 2 1/2" METAL C-H STUDS @ 24" O.C. WITH 1" TYPE "X" GYPSUM LINER PANEL ON SHAFT SIDE. W/ 1" MINERAL FIBER INSULATION IN CAVITY. SEAL TOP OF WALL TIGHT TO UNDERSIDE OF CONCRETE PLANK W/ CONT. FIRESTOP SEALANT. GA FILE #095 (STC-45-49)

- 2 HOUR RATED EXTERIOR PARTITION - (2) LAYERS OF 3/4" TYPE "X" GYPSUM BOARD, (INSIDE) 1/2" EXP EXTERIOR GYPSUM BOARD SHEATHING (OUTSIDE) OVER 3 3/8" METAL STUDS @ 16" O.C. WITH 5 1/2" BATT INSULATION (UNFACED) (R-21) (UL-424)
- 2 HOUR RATED CHASE WALL - (2 ROWS OF 1/2" TYPE "X" W/ R GYP. BOARD OVER 2 1/2" METAL STUDS @ 16" O.C. EXTEND GYP. & STUDS UP TO UNDERSIDE OF FLOOR/ROOF DECK. SEAL TIGHT TO DECK W/ CONT. FIRESTOP SEALANT AS REQUIRED. (UL#442). PROVIDE INSULATION AS REQUIRED TO ACHIEVE A MINIMUM STC RATING OF 50. PROVIDE HORIZ. 2 1/2" METAL STUD BRACING @ 48" O.C.
- 3 HOUR RATED WALL - (1) LAYER 1/2" TYPE "X" GYPSUM BOARD OVER 7/8" METAL HAT CHANNELS @ 24" O.C. OVER 2 HR RATED CONCRETE BLOCK WALL WITH CONT. GALVANIZED HORIZONTAL TRUSS TYPE REINFORCING AT ALTERNATE COURSES. SEAL TOP OF CONCRETE BLOCK WALL TIGHT TO UNDERSIDE OF CONCRETE/PLANK ABOVE WITH CONT. FIRESTOP SEALANT AND FIRESAFING INSULATION WHERE A GAP EXISTS BETWEEN TOP OF WALL AND BOTTOM OF CONCRETE/PLANK (UL #914) (PROVIDE STC RATINGS OF 50-54 COMPACTOR CHUTE FOR SHAFT ADJACENT TO DWELLING UNITS)
- 3 HOUR RATED CMU WALL - CMU WITH CONT. GALVANIZED HORIZONTAL TRUSS TYPE REINFORCING AT ALTERNATE BLOCK COURSES. SEAL TOP OF CONCRETE BLOCK WALL TIGHT TO UNDERSIDE OF CONCRETE DECK OR DECK ABOVE WITH CONT. FIRESTOP SEALANT AND FIRESAFING INSULATION WHERE GAP EXIST. BETWEEN TOP OF WALL AND BOTTOM OF DECK

**GENERAL NOTES:**

- G.C. SHALL COORDINATE SIZE & LOCATION OF ALL HVAC OPENINGS IN CONCL/PLANK WITH MECHANICAL DRAWINGS & CONCRETE PLANK CONTRACTOR.
- CONTRACTOR SHALL COORDINATE SIZE AND LOCATION OF ALL MASONRY OPENINGS AT ELEVATOR ENTRANCES WITH ELEVATOR VENDOR.
- ALL ENLARGED PLAN DIMENSIONS ARE TAKEN FINISH TO FINISH (I.U.O.N.). G.C. SHALL SUBMIT SHOP DRAWINGS TO ARCHITECT FOR REVIEW INDICATING SIZE & GAUGE OF ALL METAL STUDS AND ALL REQUIRED METAL STUDS HEADERS, SIGNED AND SEALED BY A LICENSED NYS ENGINEER.
- MIN. CLEAR HEAD ROOM HEIGHT UNDER A DROPPED ARCH 6'-8"

**LEGEND:**

- CONCRETE FOUNDATION WALL
- CONCRETE BLOCK WALL - 2HR FIRE RATED
- GYPSUM BOARD PARTITION - SEE PLAN FOR SIZE.
- MASONRY VENEER
- REMOVABLE KITCHEN BASE CABINET 2'-6" WIDE BY 2'-0" DEEP
- PARTITION - SEE WALL TYPE LEGEND

- HANDICAP ADAPTABLE APARTMENT UNIT
- H.V.I. EFFICIENCY UNIT - OUTFITTED FOR PEOPLE W/ HEARING OR VISUAL IMPAIRMENTS (TOTAL 3 UNIT)
- DESIGNATION FLOOR
- 5'-0" DIAMETER CLEAR HANDICAP FLOOR TURNING SPACE.
- 7'-0" FLOOR ADA TURNING SPACE
- 30" X 48" CLEAR ADA FLOOR SPACE

- KITCHEN AND BATHROOM VENTILATION SHAFT
- FIRE RATED SHAFT WALL PARTITION TYPE 2-4
- CARBON MONOXIDE DETECTOR
- EXIT LIGHT AND SIGN - CEILING MOUNTED
- EXIT LIGHT AND SIGN - WALL MOUNTED
- ELECTRICAL PANEL UNIT
- SUSPENDED GYPSUM BOARD
- BATHROOM DOORS AND FRAMES SHALL BE PROVIDED WITH MORTISED HINGE & LATCH TO PERMIT FUTURE REVERSAL OF DOOR ON SAME FRAME

08-27-21	ISSUE TO DOB FOR PAA
05-28-20	GROUND FLOOR REVISIONS
12-02-19	ISSUE FOR CONSTRUCTION
08-08-19	REVISED PER ENERGY OBJECTIONS
07-05-19	REVISED AS PER DOB COMMENTS
05-24-19	90% BANK SET
05-19-19	RESUBMITTED TO DOB
04-08-19	RESUBMITTED TO HPD
12-27-18	DOB SUBMISSION
12-26-18	HPD SUBMISSION
DATE	SUBMISSIONS / REVISIONS

SHEET TITLE:

1 505 \* 606 &  
M  
APPROVED  
Date: 10/15/2021  
NYC Development Hub  
AMENDED APPLICATION

REGISTERED ARCHITECT  
AREL AUFANG  
12789  
STATE OF NEW YORK

ISSUE DATE:	PROJECT NO:
9-3-18	#1715
DRAWN BY:	CHECKED BY:
S.Z.	RK
SCALE:	SHEET NO:
1/8"=1'-0"	
DRAWING NO:	
<b>A-101.01</b>	
NYC DOB NUMBER:	

PROPOSED NEW DEVELOPMENT FOR:

# BALTON COMMONS

263-267 W 126TH ST  
NEW YORK, NEW YORK

BLOCK: 1932 LOT: 5.78.107

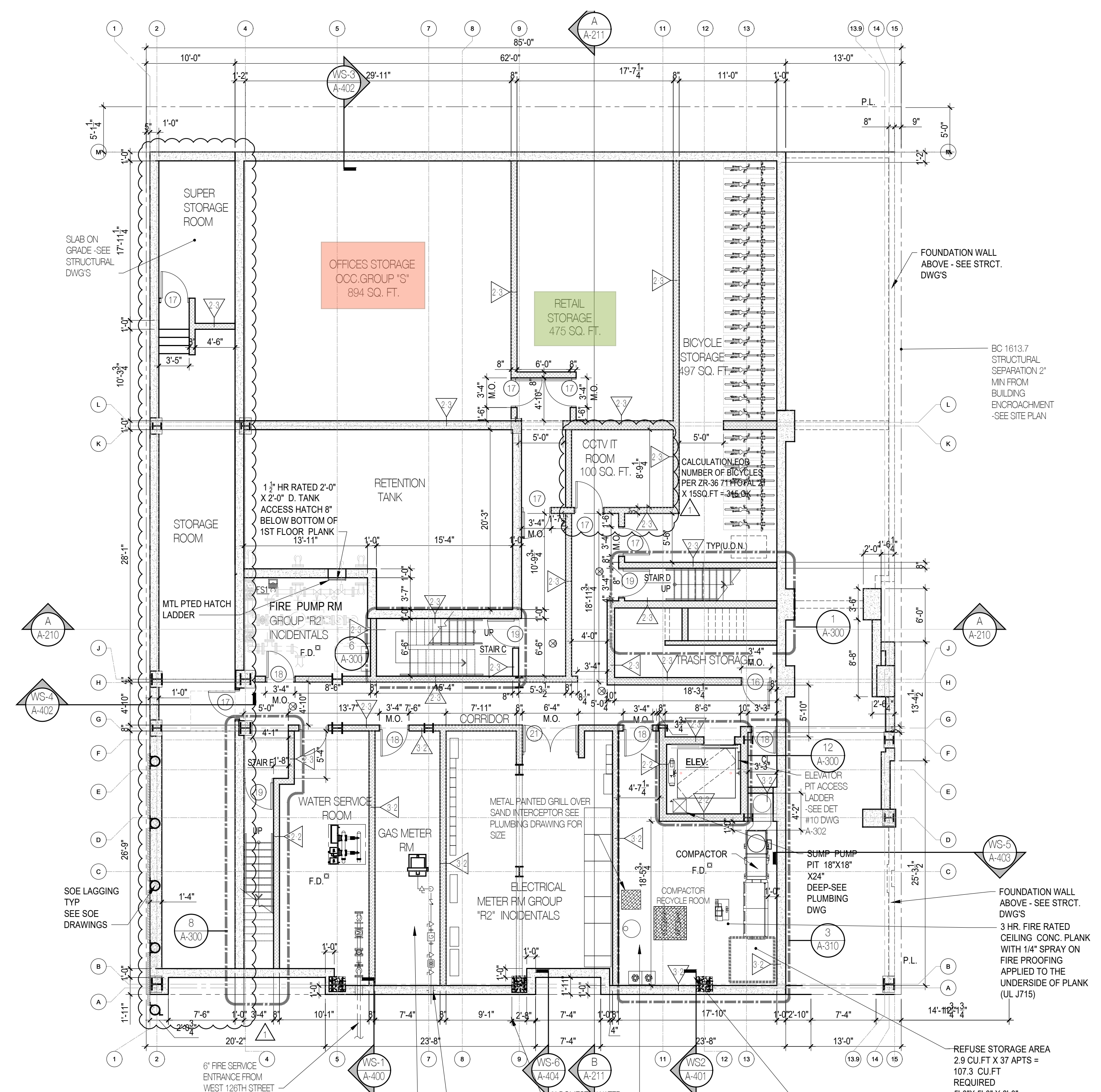
**ARCHITECT:**  
AUFGANG ARCHITECTS LLC  
74 LAFAYETTE AVENUE - SUITE 301  
SUFFERN, NY 10901  
INFO@AUFANG.COM 845.368.0004

**DEVELOPER:**  
APEX BUILDING GROUP  
51 EAST 125TH STREET, 3RD FL  
NEW YORK NY 10035  
KEN@LEMONDEV.COM  
(212) 281-2714

**STRUCTURAL ENGINEER:**  
BROOKER ENGINEERING  
74 LAFAYETTE AVENUE  
SUFFERN, NY 10901  
845-357-4411

**MEP ENGINEER:**  
JOHNSON & URBAN  
295 ROUTE 94  
COLTS NECK NJ 07722

# AUFANG ARCHITECTS



**CELLAR PLAN**  
SCALE: 1/8" = 1'-0"

**WALL TYPE LEGEND:**

- NON RATED  
CHASEWALL STUDS @ 16" O.C.  
TYPICAL PARTITION - (1) LAYER 5/8" TYPE "X" GYPSUM BOARD ON EACH SIDE OF 2 1/2" METAL STUDS @ 16" O.C. 3/8" METAL STUDS AT 1ST FLOOR ONLY  
FURRING AT INTERIOR CMU WALL (APARTMENT SIDE) - (1) LAYER 5/8" TYPE "X" GYPSUM BOARD OVER 1 1/2" Z METAL FURRING @ 16" O.C.  
PARTITION - (1) LAYER OF 5/8" TYPE "X" GYPSUM BOARD, ON EACH SIDE OF 3 3/8" METAL STUDS @ 16" O.C. (@ APARTMENT ELECTRICAL PANEL)  
FURRING AT EXTERIOR CMU WALL - (1) LAYER 5/8" TYPE "X" GYPSUM BOARD ON 3 3/8" GALV. METAL STUDS @ 16" O.C. OVER 1" (R-4.2) MINERAL WOOL INSULATION  
BATHROOM CHASE WALL PARTITION - (1) LAYER 5/8" TYPE "X" WATER RESISTANT GYPSUM BOARD ON ONE SIDE OF 2 1/2" METAL STUDS @ 16" O.C. PROVIDE R15 BATT INSULATION @ EXT. WALLS  
FURRING AT INTERIOR CMU WALL (PUBLIC CORRIDOR SIDE) - (1) LAYER 5/8" TYPE "X" GYPSUM BOARD OVER 3/8" METAL FURRING CHANNELS @ 16" O.C.  
FURRING AT EXTERIOR CMU WALL - (1) LAYER 5/8" TYPE "X" GYPSUM BOARD ON 3 3/8" GALV. METAL STUDS @ 16" O.C. WITH 31" (R-12) WOOL INSULATION  
**1 HOUR RATED**  
1 HOUR RATED TENANT SEPARATION PARTITION - (1) LAYER OF 5/8" TYPE "X" GYPSUM BOARD ON (1) SIDE, (2) LAYERS OF 5/8" TYPE "X" GYPSUM BOARD ON OTHER SIDE OF 3 3/8" METAL STUDS @ 16" O.C. WITH 3 1/2" SOUND ATTENUATION INSULATION. EXTEND STUDS & GYPSUM BOARD UP TO UNDERSIDE OF CONCRETE PLANK & SEAL TIGHT TO UNDERSIDE OF CONCRETE PLANK AND/OR ROOF PLANK W/ CONT. FIRESTOP SEALANT & FIRESAFING INSULATION (GA FILE #WP-1052) (STC 50-54)

- 1 HOUR RATED TENANT SEPARATION CHASEWALL - (2) ROWS OF (1) LAYER 5/8" TYPE "X" GYPSUM BOARD ON ONE SIDE OF 2 1/2" METAL STUDS @ 16" O.C. EXTEND GYPSUM BOARD & STUDS UP TO UNDERSIDE OF FLOOR PLANK OR ROOF PLANK. SEAL TIGHT TO PLANK WITH CONT. FIRESTOP SEALANT. SEAL ALL PENETRATIONS THRU CHASEWALL WITH FIRESAFING INSULATION AND CONT. FIRESTOP SEALANT AS REQ. PROVIDE HORIZONTAL 2 1/2" MTL STUD BRACING @ 48" O.C. MAX. (UL #V442) (PROVIDE INSUL. AS REQ. TO ACHIEVE A MIN STC RATING OF 50)  
2 HOUR RATED EXTERIOR PARTITION - (2) LAYERS OF 1/2" TYPE "X" GYP. BOARD (INSIDE) 1/2" EXP EXTERIOR GYP. BOARD SHEATHING (OUTSIDE) OVER 3 3/8" GALV. METAL STUDS @ 16" O.C. WITH 3 1/2" BATT INSULATION (UNFACED) (R-15 (UL # 424)  
2 HOUR RATED EXTERIOR PARTITION - (2) LAYERS OF 3/4" TYPE "X" GYPSUM BOARD ON EACH SIDE 3 3/8" METAL STUDS @ 16" O.C. WITH 3 1/2" SOUND ATTENUATION INSULATION. EXTEND GYPSUM BOARD & STUDS UP TO UNDERSIDE OF FLOOR PLANK OR ROOF PLANK. SEAL TIGHT TO PLANK W/ CONT. FIRESTOP SEALANT & FIRESAFING. (GA FILE #WP-1522 STC 55-59)  
2 HOUR RATED INTERIOR PARTITION - (2) LAYERS 5/8" TYPE "X" GYPSUM BOARD ON EACH SIDE 3 3/8" METAL STUDS @ 16" O.C. WITH 3 1/2" SOUND ATTENUATION INSULATION. EXTEND GYPSUM BOARD & STUDS UP TO UNDERSIDE OF FLOOR PLANK OR ROOF PLANK. SEAL TIGHT TO PLANK W/ CONT. FIRESTOP SEALANT & FIRESAFING. (GA FILE #WP-1522 STC 55-59)  
2 HOUR RATED CMU WALL - CMU WITH CONT. GALVANIZED HORIZONTAL TRUSS TYPE REINFORCING AT ALTERNATE BLOCK COURSES. SEAL TOP OF CONCRETE/PLANK BLOCK WALL TIGHT TO UNDERSIDE OF CONCRETE/PLANK ABOVE WITH CONT. FIRESTOP SEALANT AND FIRESAFING INSULATION WHERE GAP EXIST. BETWEEN TOP OF WALL AND BOTTOM OF PLANK (UL #906)  
2 HOUR RATED MECHANICAL SHAFT WALL - (2) LAYERS OF 1/2" TYPE "X" GYPSUM BOARD ON ONE SIDE OF 2 1/2" METAL C-H STUDS @ 24" O.C. WITH 1" TYPE "X" GYPSUM LINER PANEL ON SHAFT SIDE. W/ 1" MINERAL FIBER INSULATION IN CAVITY. SEAL TOP OF WALL TIGHT TO UNDERSIDE OF CONCRETE PLANK W/ CONT. FIRESTOP SEALANT. GA FILE #7095 (STC-45-49)

- 2 HOUR RATED EXTERIOR PARTITION - (2) LAYERS OF 3/4" TYPE "X" GYPSUM BOARD, (INSIDE) 1/2" EXP EXTERIOR GYPSUM BOARD SHEATHING (OUTSIDE) OVER 3 3/8" METAL STUDS @ 16" O.C. WITH 5 1/2" BATT INSULATION (UNFACED) (R-21) (UL-424)  
2 HOUR RATED CHASE WALL - (2 ROWS OF 1/2" TYPE "X" GYP. BOARD OVER 2 1/2" METAL STUDS @ 16" O.C. EXTEND GYP. & STUDS UP TO UNDERSIDE OF FLOOR/ROOF DECK. SEAL TIGHT TO DECK W/ CONT. FIRESTOP SEALANT AS REQUIRED. (UL#442). PROVIDE INSULATION AS REQUIRED TO ACHIEVE A MINIMUM STC RATING OF 50. PROVIDE HORIZ. 2 1/2" METAL STUD BRACING @ 48" O.C.  
**3 HOUR RATED**  
3 HOUR RATED WALL - (1) LAYER 1/2" TYPE "X" GYPSUM BOARD OVER 7/8" METAL HAT CHANNELS @ 24" O.C. OVER 2 HR RATED CONCRETE BLOCK WALL WITH CONT. GALVANIZED HORIZONTAL TRUSS TYPE REINFORCING AT ALTERNATE COURSES. SEAL TOP OF CONCRETE BLOCK WALL TIGHT TO UNDERSIDE OF CONCRETE/PLANK ABOVE WITH CONT. FIRESTOP SEALANT AND FIRESAFING INSULATION WHERE A GAP EXISTS BETWEEN TOP OF WALL AND BOTTOM OF CONCRETE/PLANK (UL #914) (PROVIDE STC RATINGS OF 50-54 COMPACTOR CHUTE FOR SHAFT ADJACENT TO DWELLING UNITS)  
3 HOUR RATED CMU WALL - 3 CORE 75% SOLID CMU WITH CONT. GALVANIZED HORIZONTAL TRUSS TYPE REINFORCING AT ALTERNATE BLOCK COURSES. SEAL TOP OF CONCRETE BLOCK WALL TIGHT TO UNDERSIDE OF CONCRETE DECK OR DECK ABOVE WITH CONT. FIRESTOP SEALANT AND FIRESAFING INSULATION WHERE GAP EXIST. BETWEEN TOP OF WALL AND BOTTOM OF DECK

**GENERAL NOTES:**

- FOR KITCHEN AND TOILET ELEVATIONS SEE DWG A-510, A-511 & A-512, 513, 514
- G.C. SHALL COORDINATE SIZE & LOCATION OF ALL HVAC OPENINGS IN CONCIPLANK WITH MECHANICAL DRAWINGS & CONCRETE PLANK CONTRACTOR.
- CONTRACTOR SHALL COORDINATE SIZE AND LOCATION OF ALL MASONRY OPENINGS AT ELEVATOR ENTRANCES WITH ELEVATOR VENDOR.
- ALL ENLARGED PLAN DIMENSIONS ARE TAKEN FINISH TO FINISH (U.O.N.).
- G.C. SHALL SUBMIT SHOP DRAWINGS TO ARCHITECT FOR REVIEW INDICATING SIZE & GAUGE OF ALL METAL STUDS AND ALL REQUIRED METAL STUDS HEADERS, SIGNED AND SEALED BY A LICENSED NYS ENGINEERS
- MIN. CLEAR HEAD ROOM HEIGHT UNDER A DROPPED ARCH 6'-8"

**LEGEND:**

- CONCRETE FOUNDATION WALL
- CONCRETE BLOCK WALL - 2HR FIRE RATED
- GYPSUM BOARD PARTITION - SEE PLAN FOR SIZE.
- MASONRY VENEER
- REMOVABLE KITCHEN BASE CABINET 2'-6" WIDE BY 2'-0" DEEP
- PARTITION - SEE WALL TYPE LEGEND

- HANDICAP ADAPTABLE APARTMENT UNIT
- H.V.I. EFFICIENCY UNIT- OUTFITTED FOR PEOPLE W/ HEARING OR VISUAL IMPAIRMENTS (TOTAL 3 UNIT)
- DESIGNATION FLOOR
- 5'-0" DIAMETER CLEAR HANDICAP FLOOR TURNING SPACE.
- 11" FLOOR ADA TURNING SPACE
- 30" X 48" CLEAR ADA FLOOR SPACE

- KITCHEN AND BATHROOM VERTICAL VENTILATION SHAFT
- FIRE RATED SHAFT WALL PARTITION WALL TYPE 2-4
- CARBON MONOXIDE DETECTOR
- EXIT LIGHT AND SIGN - CEILING MOUNTED
- EXIT LIGHT AND SIGN - WALL MOUNTED
- ELECTRICAL PANEL UNIT
- SUSPENDED GYPSUM BOARD
- BATHROOM DOORS AND FRAMES SHALL BE PROVIDED WITH MORTISED HINGE & LATCH TO PERMIT FUTURE REVERSAL OF DOOR ON SAME FRAME

04-13-21	ISSUE TO DOB FOR PAA
03-12-20	ISSUE FOR CONSTRUCTION REVISION I
12-02-19	ISSUE FOR CONSTRUCTION
07-05-19	REVISED AS PER DOB COMMENTS
05-24-19	90% BANK SET
05-19-19	RESUBMITTED TO DOB
04-08-19	RESUBMITTED TO HPD
3-7-19	REVISED AS PER DOB COMMENTS
12-27-18	DOB SUBMISSION
12-26-18	HPD SUBMISSION
DATE	SUBMISSIONS / REVISIONS



**CELLAR PLAN**

THIS DRAWING IS AN INSTRUMENT OF SERVICE AND SHALL REMAIN THE PROPERTY OF AUFANG ARCHITECTS LLC. WHETHER THE PROJECT FOR WHICH IT IS MADE IS EXECUTED OR NOT, THIS DRAWING SHALL NOT BE USED BY THE OWNER OR OTHERS ON OTHER PROJECTS WITHOUT THE WRITTEN CONSENT OF AUFANG ARCHITECTS LLC. REPRODUCTION OR PUBLICATION BY ANY METHOD OR MEANS OR IN ANY MANNER WITHOUT THE WRITTEN CONSENT OF AUFANG ARCHITECTS LLC IS STRICTLY PROHIBITED.

**ISSUE DATE:** 9-3-18 **PROJECT NO.:** #1715

**DRAWN BY:** S.Z. **CHECKED BY:** RK

**SCALE:** 1/8"=1'-0" **SHEET NO.:**

**DRAWING NO.:** **A-100.01**

**NYC DOB NUMBER:**