



153 Ludlow Street





# 153 Ludlow Street

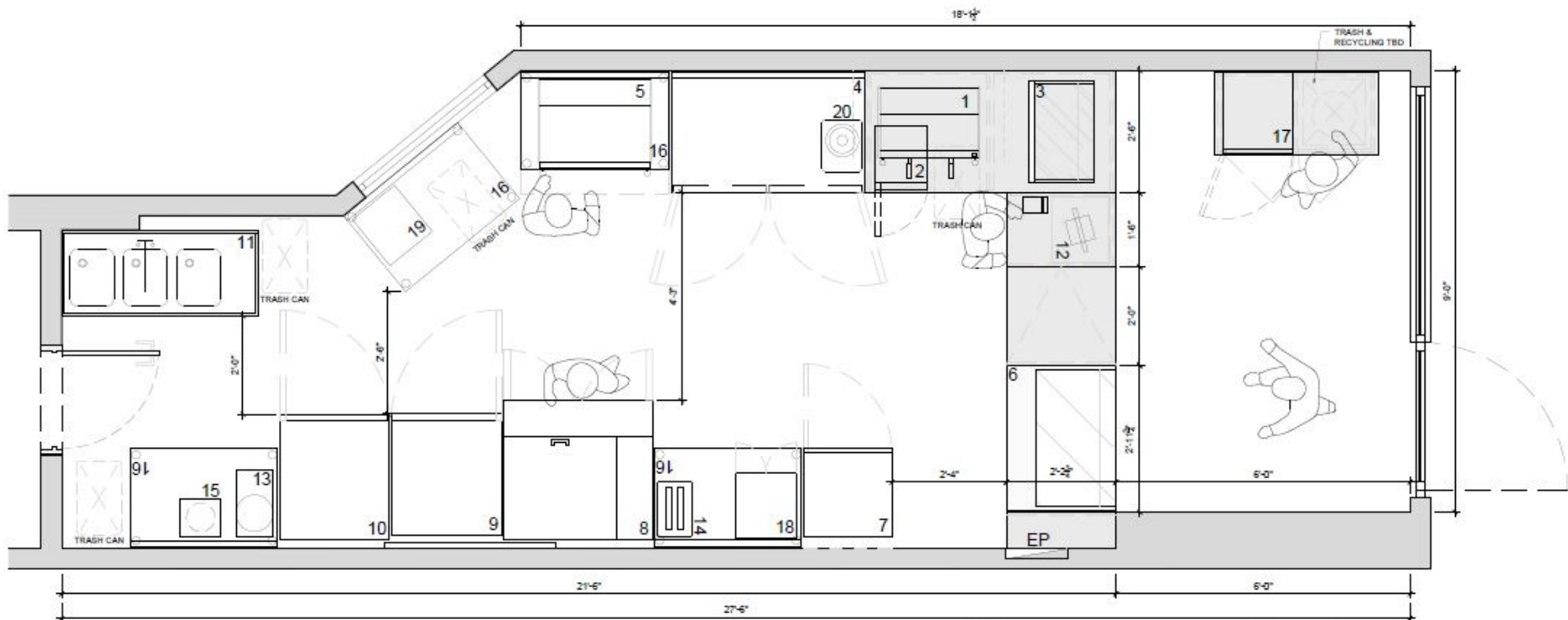
## Turnkey Cafe

SIZE:	250 SF
ASKING PRICE:	\$4,100 Per Month
TERM:	8 Years - Lease Assignment
POSSESSION:	IMMEDIATE

### SPACE DETAILS

- High Traffic Ludlow Street Location
- Recently Built Arepa Cafe
- Fully Fixtured With Convection Cooking Setup
- New Storefront Facade
- Full Equipment List Upon Request
- Key Money Upon Request





1. ESPRESSO MACHINE
2. MILK REFRIGERATOR
3. COUNTERTOP WARM DISPLAY
4. DOUBLE DOOR WORKTOP REFRIGERATOR
5. DOUBLE DECK COUNTERTOP OVEN
6. COLD DISPLAY REFRIGERATOR
7. MERCHANDISER REFRIGERATOR
8. SANDWICH PREP TABLE
9. SINGLE DOOR FREEZER
10. SINGLE DOOR FRIDGE

11. THREE COMPARTMENT SINK W/ DRAINBOARD
12. POS
13. JUICER
14. TOASTER
15. BLENDER
16. 24X36 PREP TABLE W/ BACKSPLASH
17. JUICE REFRIGERATOR
18. AIR FRYER
19. MIXER
20. ESPRESSO GRINDER

1 FLOOR PLAN  
ASB 5/4 x 7/8"

NOTE:  
ALL DIMENSIONS  
TO BE CONFIRMED ON SITE

**combo**  
**de**  
**tos**  
info@combocoolab.com

TITLE: MOROCHAS CAFE - FLOOR PLAN  
SCALE: 1/2" = 1'-0"  
DATE: MAR 28, 2022

PROJECT: 153 LUDLOW ST,  
NEW YORK, NY 10002

DWG #:

**A 01**



CAPITAL REAL ESTATE  
ADVISORS