

FOR SALE / LEASE | ±33,715 SF ON ±1.67 AC PARCEL

INDUSTRIAL / FLEX BUILDING WITH AMPLE PARKING



7740 KENAMAR CT
SAN DIEGO, CA 92121

SPENCER DOK
Vice President

858.805.5547
sdok@lee-associates.com
CA RE Lic. #02106855

DALE CAMERA
Senior Vice President

949.337.2546
dcamera@leeirvine.com
CA RE Lic. #01313921

 **LEE &
ASSOCIATES**
COMMERCIAL REAL ESTATE SERVICES

PROPERTY HIGHLIGHTS


 **SIZE**
±33,715 SF industrial/flex building

 **PARCEL**
±1.67 AC


 **LOADING**
1 Dock + 2 grade-level doors

 **CLEAR HEIGHT**
22-24' In warehouse

 **BUILD OUT**
50% Warehouse / 50% office

 **POWER**
3 Phase, 1,600 amps, 277/480 volts

 **FENCED-IN**
Yard (±10,000 SF)

 **YEAR BUILT**
1985

 **ZONING**
IL-2-1

 **PARKING**
±85 Parking spaces, expandable with yard

 **CONSTRUCTION**
Concrete tilt-up with steel frame, glass curtain wall, and wood truss

LEASE RATE: \$1.40/SF NNN (NNN'S ±\$0.35/SF)

SALE PRICE: \$8,765,900 (\$260/SF)

AVAILABLE: NOVEMBER 1, 2026*

*Contact broker for details



Property line for reference only.

DOCK LOADING

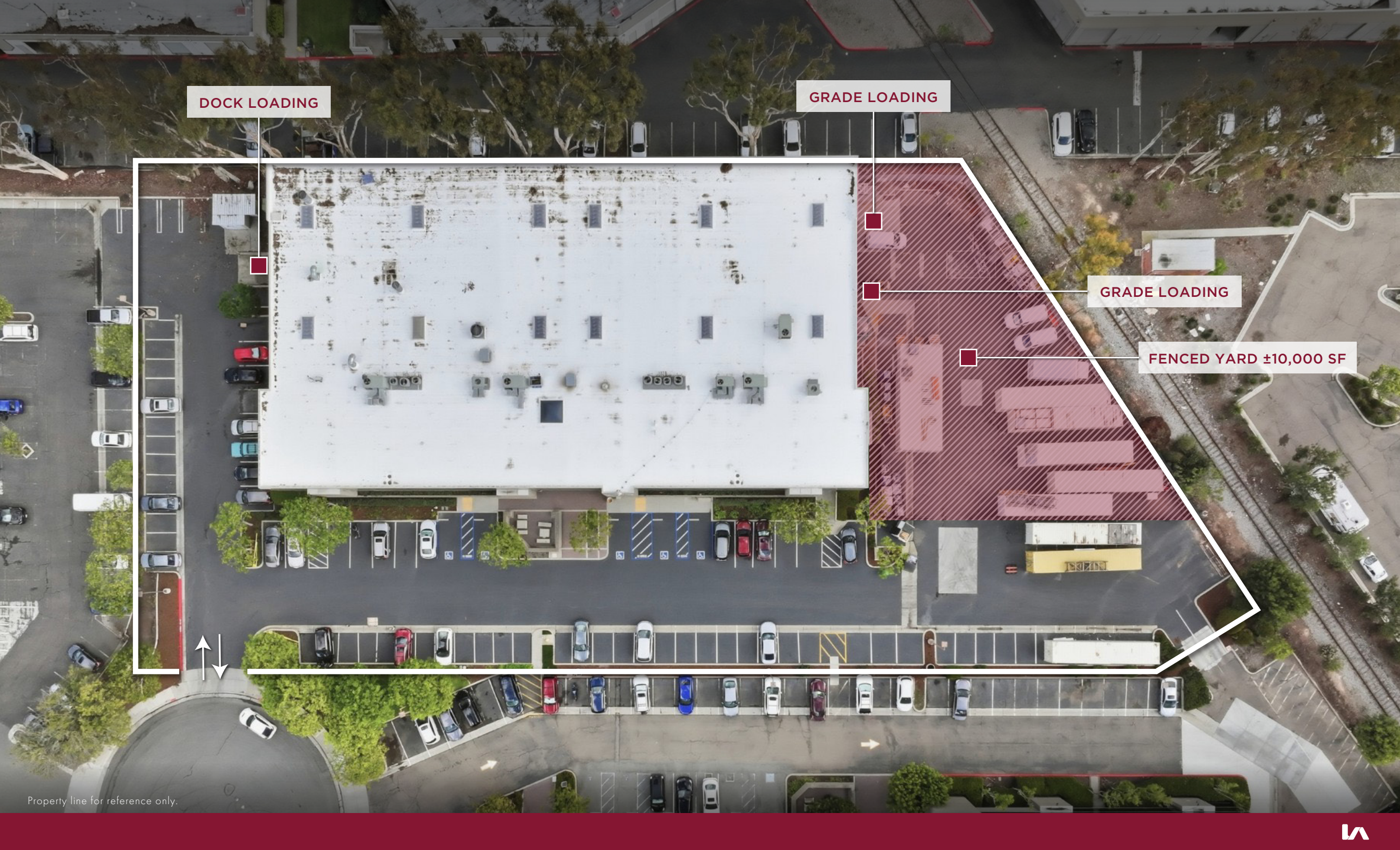
GRADE LOADING

GRADE LOADING

FENCED YARD ±10,000 SF



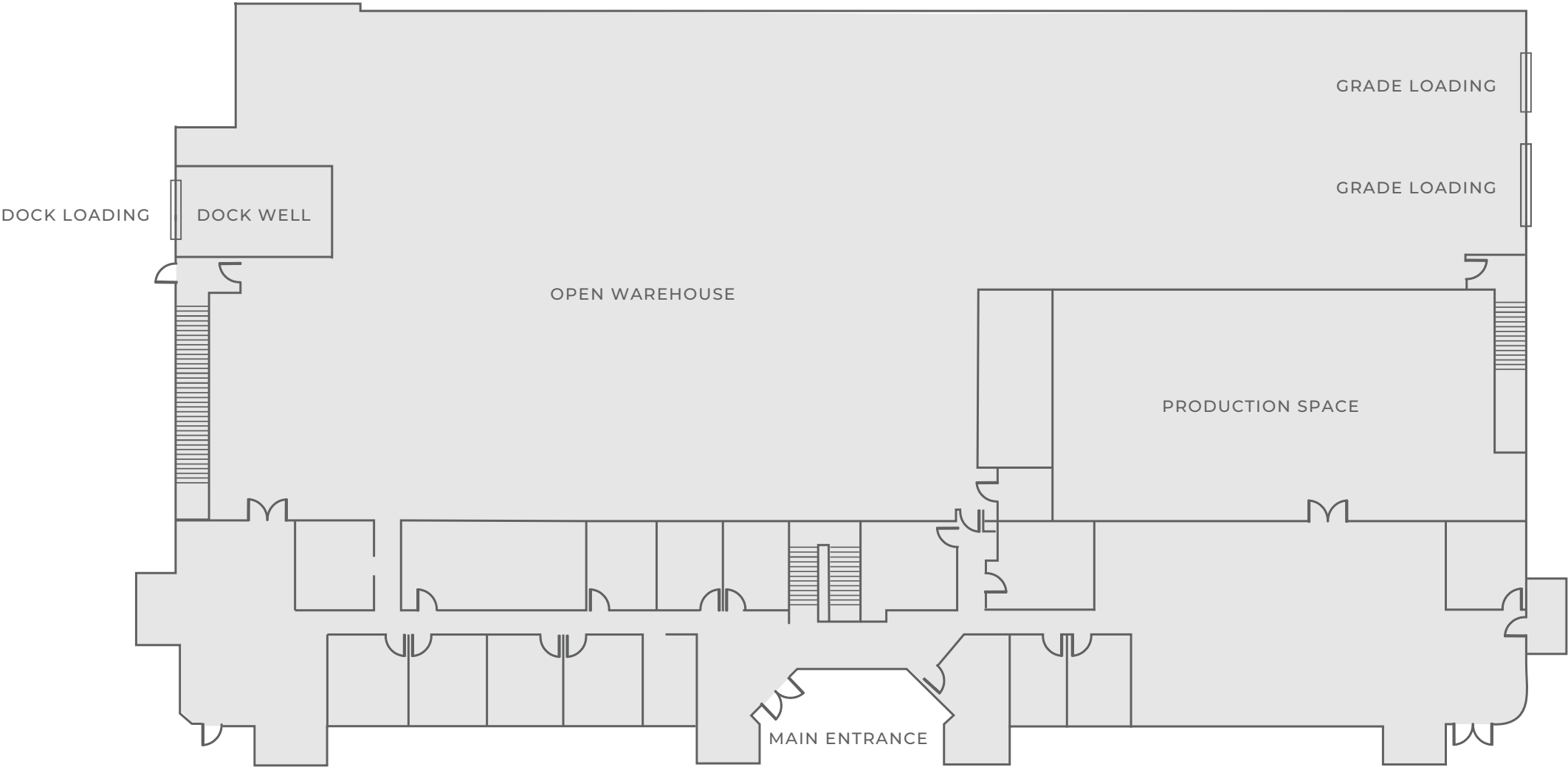
Property line for reference only.





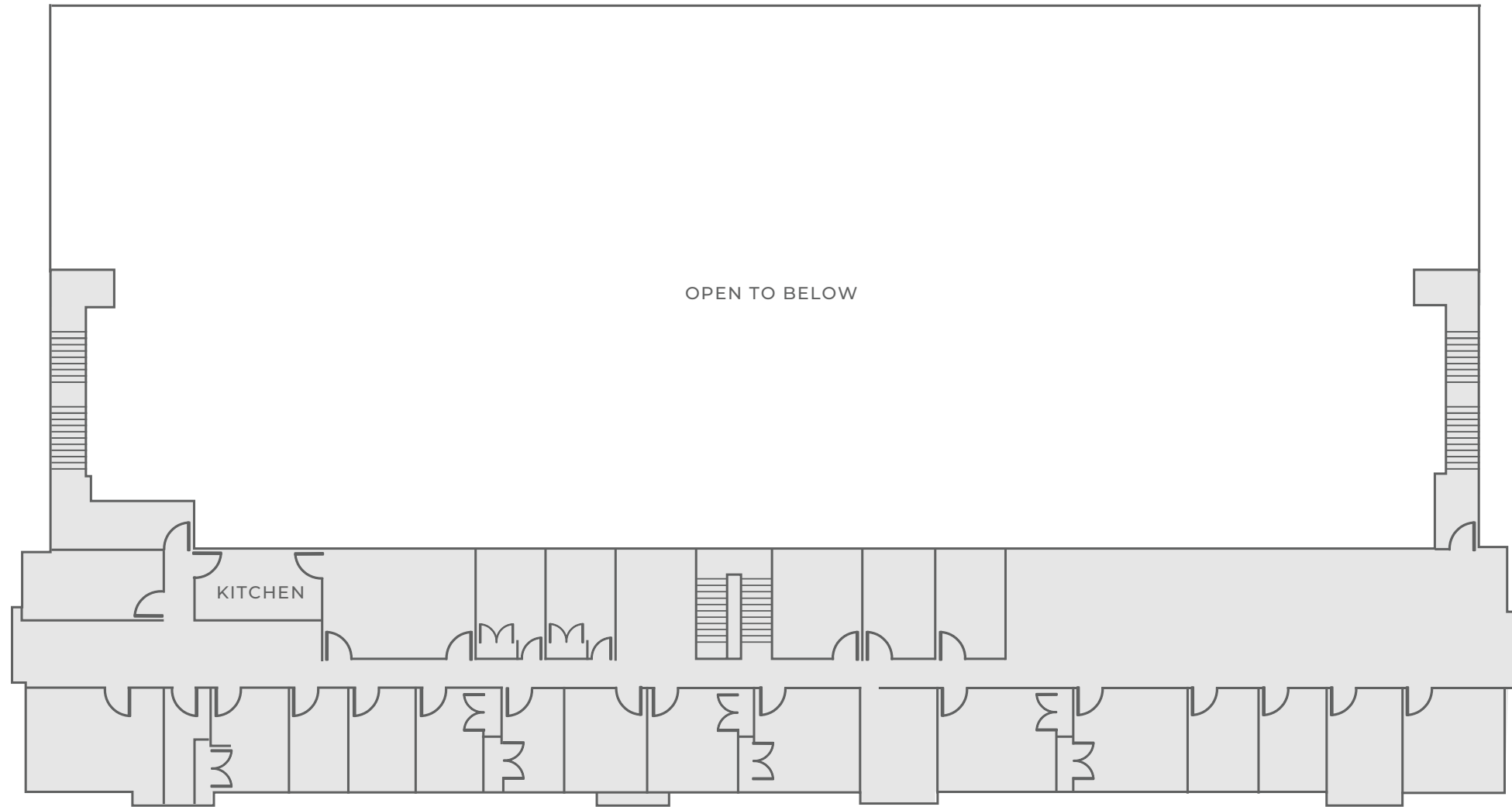


FIRST FLOOR



Floor plans not to scale, for reference only.

SECOND FLOOR



Floor plans not to scale, for reference only.

MIRA MESA COMMUNITY PLAN UPDATE (2022)

In December 2022, the City of San Diego adopted the updated Mira Mesa Community Plan, a long-range framework guiding land use, mobility, and economic development for the region's 10,700-acre planning area, which includes the Miramar industrial hub. The Update reinforces Mira Mesa / Sorrento Mesa as one of San Diego's most important employment and innovation districts, with land-use protections that strongly support long-term industrial relevance.

1. Reinforced Industrial / Employment Importance

- The Plan identifies Mira Mesa–Miramar as a Prime Industrial and Employment Hub, essential for job creation, goods movement, and regional competitiveness.
- Industrial land is largely preserved, with strategic flexibility added only in select areas to support future job-generating uses.

2. Land-Use Stability With Strategic Flexibility

- Most industrial zones (IL-2-1 and related) remain intact and protected, offering predictable long-term use for warehouse, distribution, and R&D/tech.
- Some areas transition to Prime Industrial – Flex, allowing future mixed-employment opportunities. This enhances long-term optionality without undermining core industrial zoning.

3. Strong Growth in Surrounding Population & Workforce

- The Plan accommodates up to 24,000 new housing units, significantly expanding the local labor pool that supports industrial and tech tenants.
- Increased density and improved mobility strengthen workforce access to Miramar's industrial corridor.

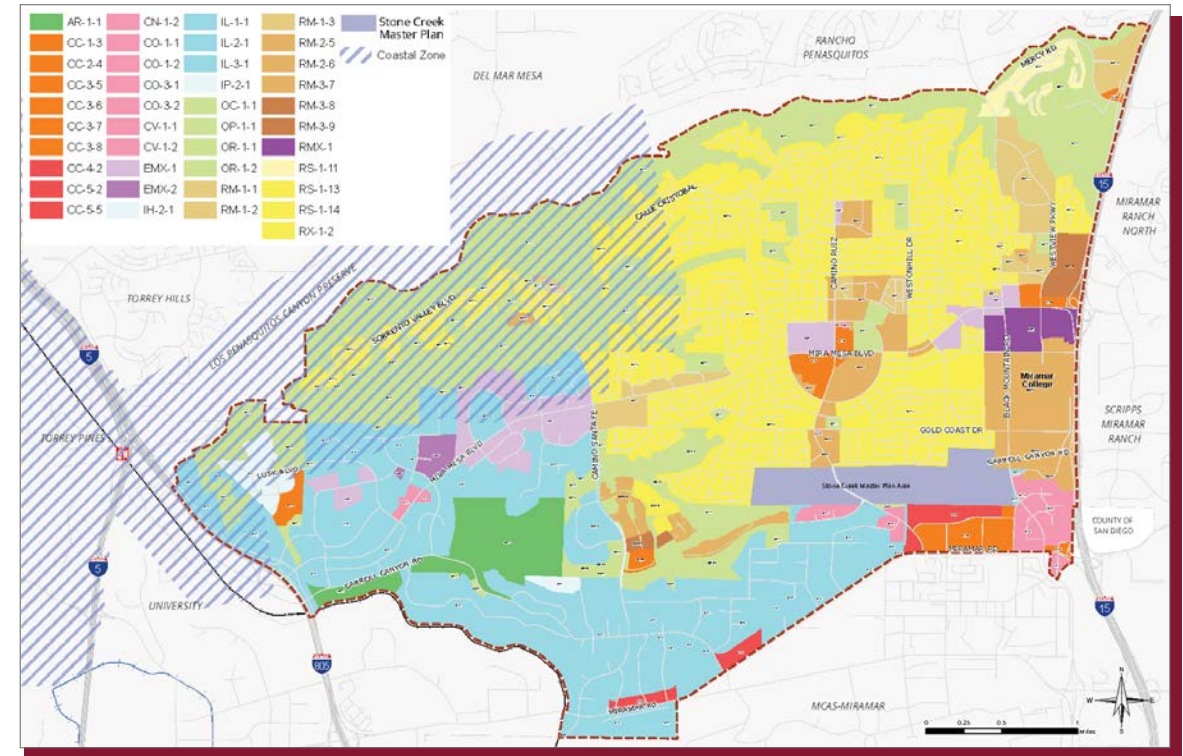
4. Mobility & Infrastructure Improvements

- Major emphasis on improving east-west and north-south connectivity, transit access, and circulation around employment centers.
- Enhances truck flow, employee access, and overall operational efficiency for industrial users.

5. Long-Term Upside Potential

- With protected industrial zoning today—and emerging flex/mixed-employment nodes—the area offers both stability and future redevelopment optionality.
- Demand for well-located infill industrial space remains strong as Mira Mesa / Miramar continues to evolve as a core San Diego economic engine.

MIRA MESA COMMUNITY PLAN



STONE CREEK MASTER PLAN





7740 KENAMAR COURT

7740 KENAMAR COURT

SAN DIEGO, CA 92121



For more information or tours, please contact:

SPENCER DOK
Vice President

858.805.5547

sdok@lee-associates.com

CA RE Lic. #02106855

DALE CAMERA
Senior Vice President

949.337.2546

dcamera@leeirvine.com

CA RE Lic. #01313921



Lee & Associates San Diego | 6310 Greenwich Drive, Suite 240, San Diego, CA 92122 | 858.453.9990 | www.lee-associates.com/sandiego

All information furnished regarding property for sale, rental or financing is from sources deemed reliable, but no warranty or representation is made to the accuracy thereof and some is submitted subject to error, omissions, change of price, rental or other conditions prior to sale, lease or financing or withdrawal without notice. No liability of any kind is to be imposed on the broker herein.