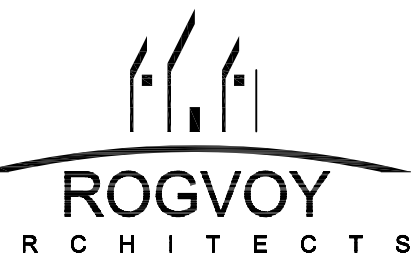


Issued for:
 REVISED 05-1111
 REVISED 05-1201
 REVISED 05-1206
 PRELIM. REVIEW BY TWP. 05-1228
 ADMIN. REVIEW BY TWP. 06-0203
 LEASE PLAN 06-0213
 LEASE PLAN 06-0203

project:

PROPOSED
COMMERCIAL DEVELOPMENT

Blair Road & U.S. - 31 / M - 37
 BLAIR TOWNSHIP, MICHIGAN



32500 TELEGRAPH ROAD
 SUITE 250
 BINGHAM FARMS, MICHIGAN
 48025-2404
 PH 248.540.7700 FX 248.540.2710
 ARCHITECTS@ROGVOY.COM

owner:
 Chum's Corner Green L.L.C.
 2840 GOLDEN GATE PARKWAY, STE. 102
 WAPLES, FL 34088
 (239) 434-8787

drawing:

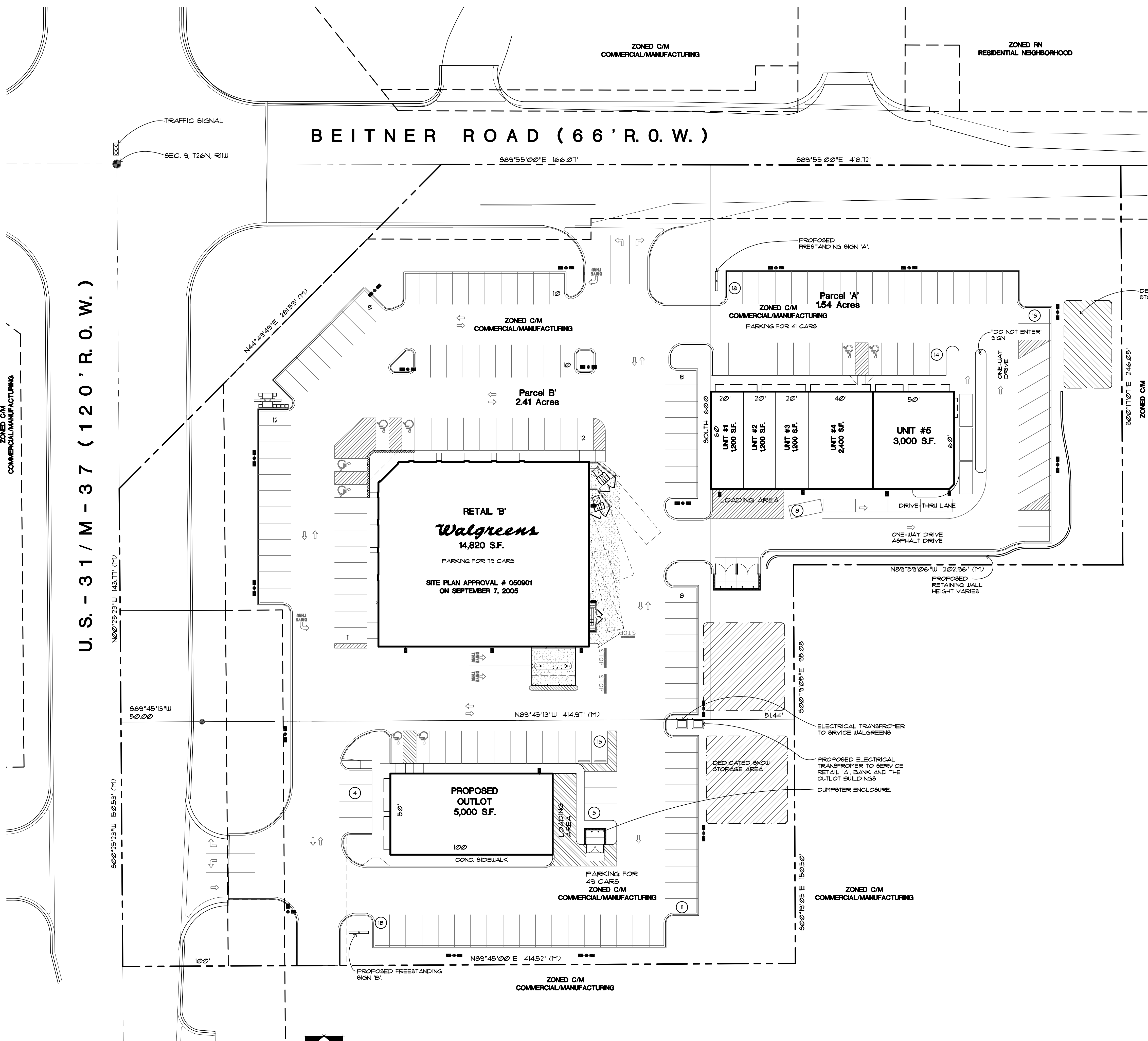
LEASE PLAN

DO NOT SCALE DRAWING
 issue date: 11 NOV. 05
 drawn: S.V.
 checked: M.D.
 approved: M.

file number: 04197-R

sheet:

L-1
 04197-R LEASE 06-0503



LAND / BUILDING / PARKING DATA:

PARCEL 'A'
 Blair Township, Michigan
 ZONING: C/M - COMMERCIAL/ MANUFACTURING

LAND AREA (GROSS) :	154 ACRES
BUILDING AREA :	
RETAIL 'A'	6,000 S.F.
BANK	3,000 S.F.
TOTAL BUILDING AREA :	9,000 S.F.
PARKING REQUIRED :	
RETAIL :	32 SPACES
(1 SPACE / 150 S.F. USABLE FLOOR AREA)	
• USABLE FLOOR AREA = 80% GROSS FLOOR AREA (6,000 x 80% / 150)	
BANK :	12 SPACES
(1 SPACE / 200 S.F. USABLE FLOOR AREA + 8 STACKING FOR 1ST WINDOW + 6 STACKING FOR ADDITIONAL WINDOW)	
• USABLE FLOOR AREA = 80% GROSS FLOOR AREA (3,000 x 80% / 200)	
TOTAL PARKING SPACES REQUIRED:	44 SPACES
PARKING PROVIDED:	45 SPACES
(50 SPACES / 1,000 S.F. GROSS)	8 STACKING SPACES

LAND / BUILDING / PARKING DATA:

PARCEL 'C'
 Blair Township, Michigan
 ZONING: C/M - COMMERCIAL/ MANUFACTURING

LAND AREA (GROSS) :	143 ACRES
BUILDING AREA :	
OUTLOT	5,000 S.F.
TOTAL BUILDING AREA :	5,000 S.F.
PARKING REQUIRED :	
(CALCULATED AS PER REQUIREMENTS FOR THE ESTABLISHMENTS FOR SALE AND CONSUMPTIONS ON THE PREMISES OF BEVERAGES, FOOD, OR REFRESHMENTS.)	
(1 SPACE / 3 SEATS + 1 SPACE / 2 EMPLOYEES) 49 SPACES (110 SEATS / 3 + 24 EMPLOYEES / 2)	
TOTAL PARKING SPACES REQUIRED:	49 SPACES
PARKING PROVIDED:	49 SPACES
(98 SPACES / 1,000 S.F. GROSS)	

LEASE PLAN
 Blair Township, Michigan

SCALE: 1"=30'-0"