

FOR SALE



**@ 1200 Chase Parkway
Map Block 0383-1009-0911
Waterbury, CT 06708**

**ATTN: Developers 18.86 Acres
Location, Location, Location!!
Directly Off Exit 17 on I-84**

**Great Visibility with High Traffic Volume(DOT 19,300 +/- Vehicles Daily)
Ideal for Commercial, Medical or Residential
Offered at\$1,895,000.00**

PROPERTY DATA FORM

PROPERTY ADDRESS @1200 Chase Parkway: Map Block 0383-1009-0911

CITY, STATE Waterbury, CT 06708

BUILDING INFO

Total S/F

Number of floors

Avail S/F

Suite 2

Suite 3

Ext. Construction

Ceiling Height

Roof

Date Built

UTILITIES

Sewer Available

Water Available

Gas/Oil Available

Electrical

MECHANICAL EQUIP.

Air Conditioning

Sprinkler / Type

Type of Heat

OTHER

Acres 18.86

Zoning RS-12

Parking

State Route / Distance To... Immediate to I-84

TAXES

Assessment \$77,210.00

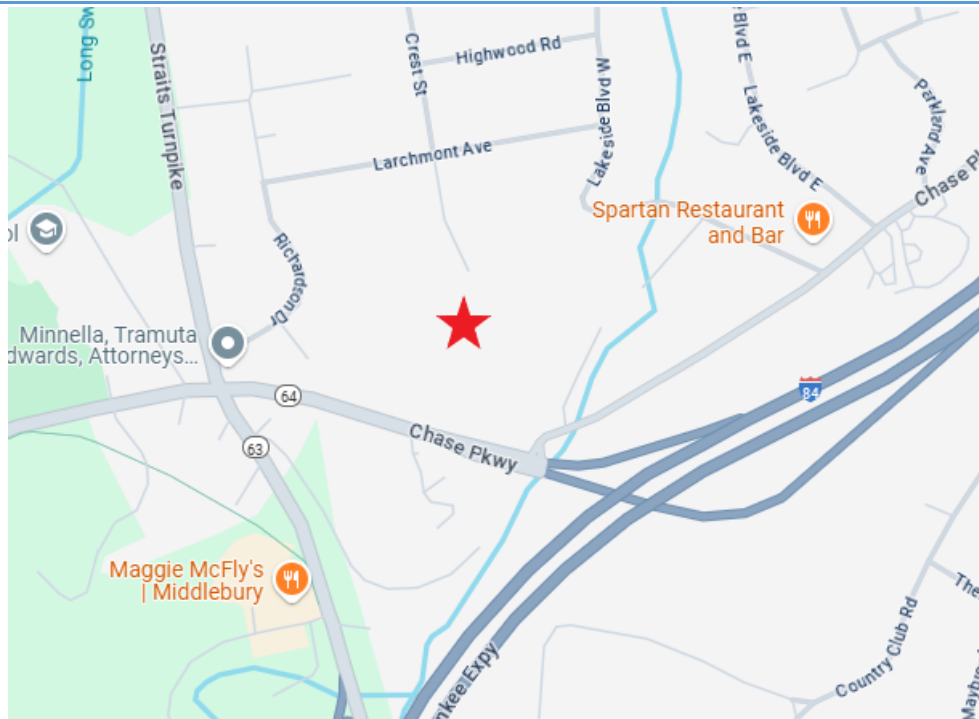
Appraisal \$110,300.00

Mill Rate 49.44

Taxes \$3,817.26

TERMS

Sale \$1,895,000.00



All information furnished is from sources deemed reliable and is submitted subject to errors, omissions, change of other terms of conditions, prior sale, lease or financing or withdrawal-all without notice. No representation is made or implied by Godin Property Brokers, LLC or its associates as to the accuracy of the information submitted herein.

Conceptual Residential



PRELIMINARY

PARSONS AVENUE

TOWN OF MIDDLEBURY
CITY OF WATERBURY

CREST STREET

LAKEVIEW BOULEVARD WEST
WOOSTER STREET



JEAN V. DILLON, TRUSTEE

OVERALL GRADING, DRAINAGE
& EROSION CONTROL PLAN

CHASE PARKWAY
CONNECTICUT ROUTE 64



PROJECT NO.	2007-01
DATE	11/11/07
SCALE	1" = 20'
DESIGNED BY	JEAN V. DILLON
CHECKED BY	JEAN V. DILLON
APPROVED BY	JEAN V. DILLON
DATE	11/11/07
PROJECT NO.	2007-01
SCALE	1" = 20'
DESIGNED BY	JEAN V. DILLON
CHECKED BY	JEAN V. DILLON
APPROVED BY	JEAN V. DILLON
DATE	11/11/07

C11

PRELIMINARY



NO.	REVISION	DATE



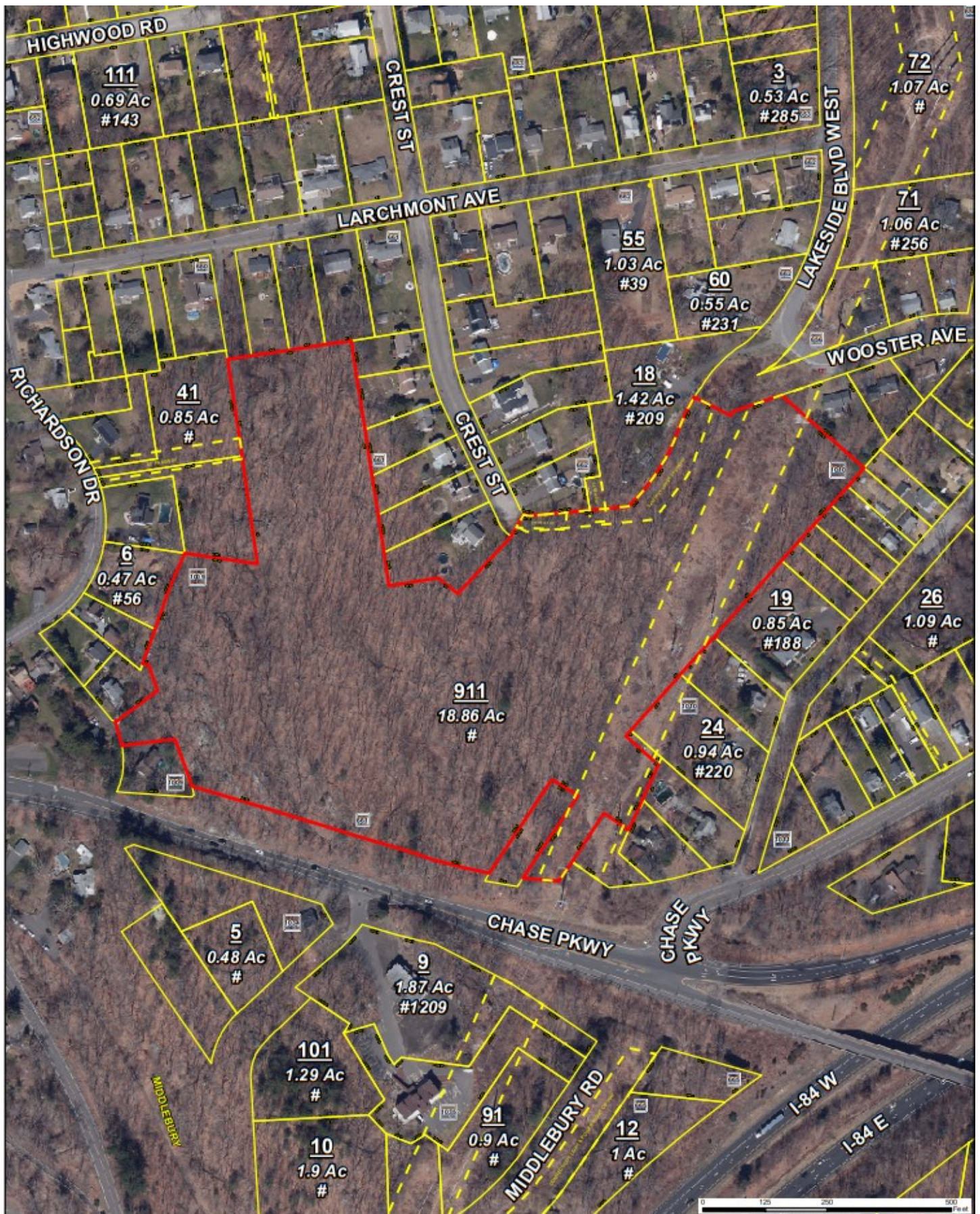
JEAN V. DILLON, TRUSTEE

EXISTING CONDITIONS

CHASE PARKWAY
CONNECTICUT ROUTE 64

Civil

S10

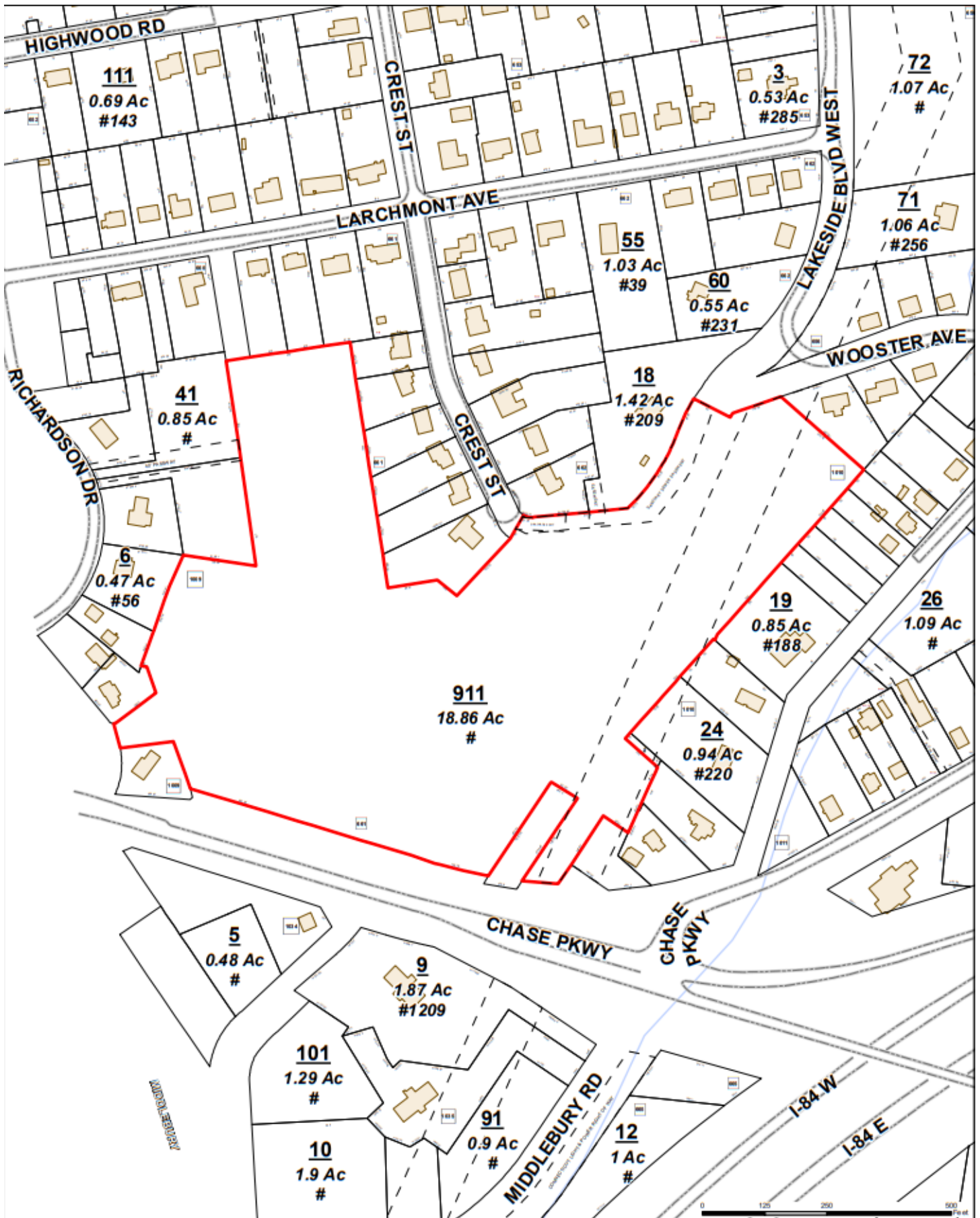


City of Waterbury
Public Works Department

MBL: 0383-1009-0911
ADDRESS: CHASE PARKWAY

This map is for informational purposes only and has not been prepared for, or suitable for legal, engineering, or surveying purposes. Users of this information should review or consult the primary data and information sources to verify the usability of the information. The City of Waterbury makes no warranties, express or implied, as to the use of the information obtained herein.





City of Waterbury
Public Works Department

MBL: 0383-1009-0911
ADDRESS: CHASE PARKWAY

This map is for informational purposes only and has not been prepared for, or suitable for, legal, engineering, or surveying purposes. Users of this information should review or consult the primary data and information sources to verify the usability of the information. The City of Waterbury makes no warranties, express or implied, as to the use of the information obtained herein.

