

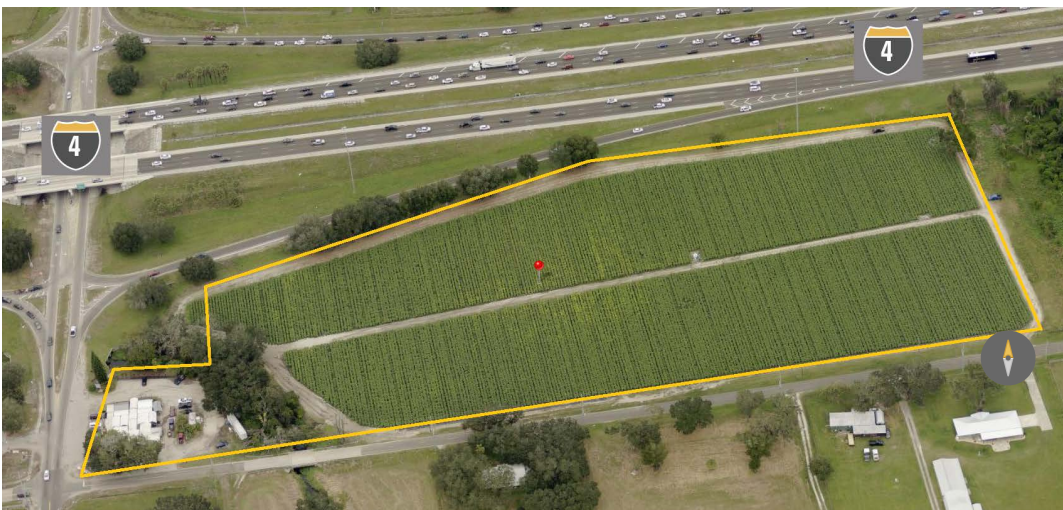


5002 BEAUCHAMP RD, PLANT CITY

- › One of the best logistics location in Tampa based on access to demand/population
- › Property fronts I-4 with full I-4 interchange access
- › Central to both Tampa/Port Tampa Bay and Lakeland
- › 12-Acre Parcel
- › Zoned CI
- › Traffic Count: 136,000 cars per day

Features

*Excellent logistics/
 distribution location with
 direct access to Interstate 4
 w/ existing CI zoning.*



Submitted subject to error, change in status, or withdrawal without notice.