



1960 INDUSTRIAL PARK

FOR LEASE



JONATHAN SELLERS

CEO

832.748.1283

jonathan.sellers@revkocre.com

JASON PATE

Broker Associate

214.632.2242

jason.pate@revkocre.com

18803 Hamish, Suite F, Tomball, TX 77377 | 281.547.8334 | revkocre.com

4711 RICHEY ROAD # D | HUMBLE, TX 77338

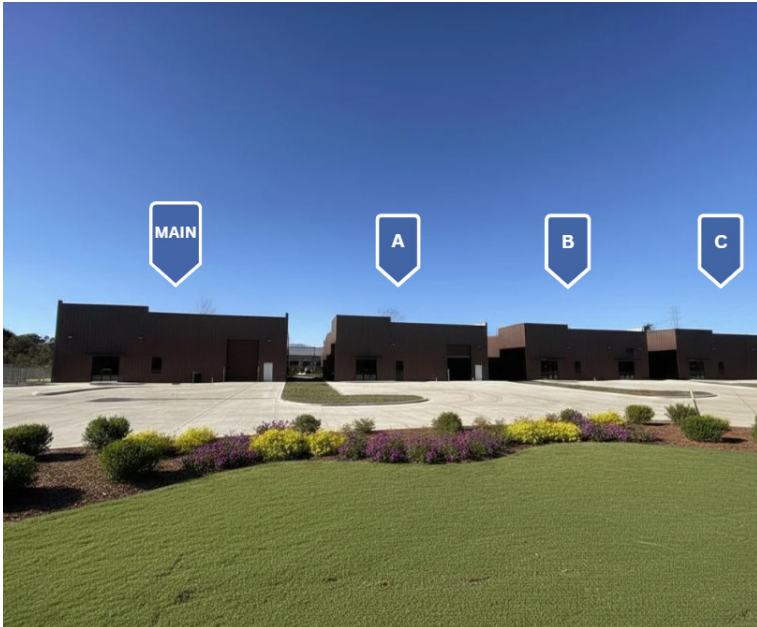
FOR LEASE



PROPERTY OVERVIEW

BUILDING

Main	LEASED
A	± 4,900 SF
B	± 5,250 SF
C	SOLD
D	± 4,500 SF LEASED ± 3,000 SF AVAILABLE



PROPERTY HIGHLIGHTS

Office:	BTS
Eave Height:	±18'
Construction:	Fully insulated metal
Loading:	14' x 16' grade-level door
Power:	480V 3 Phase Power
Lease Type:	NNN
Location:	Hardy Toll Road (±3 miles), Interstate 45 (±4 miles), Sam Houston Tollway (±6 miles), and Interstate 69 (±6 miles)

JONATHAN SELLERS
CEO
832.748.1283
jonathan.sellers@revkocre.com

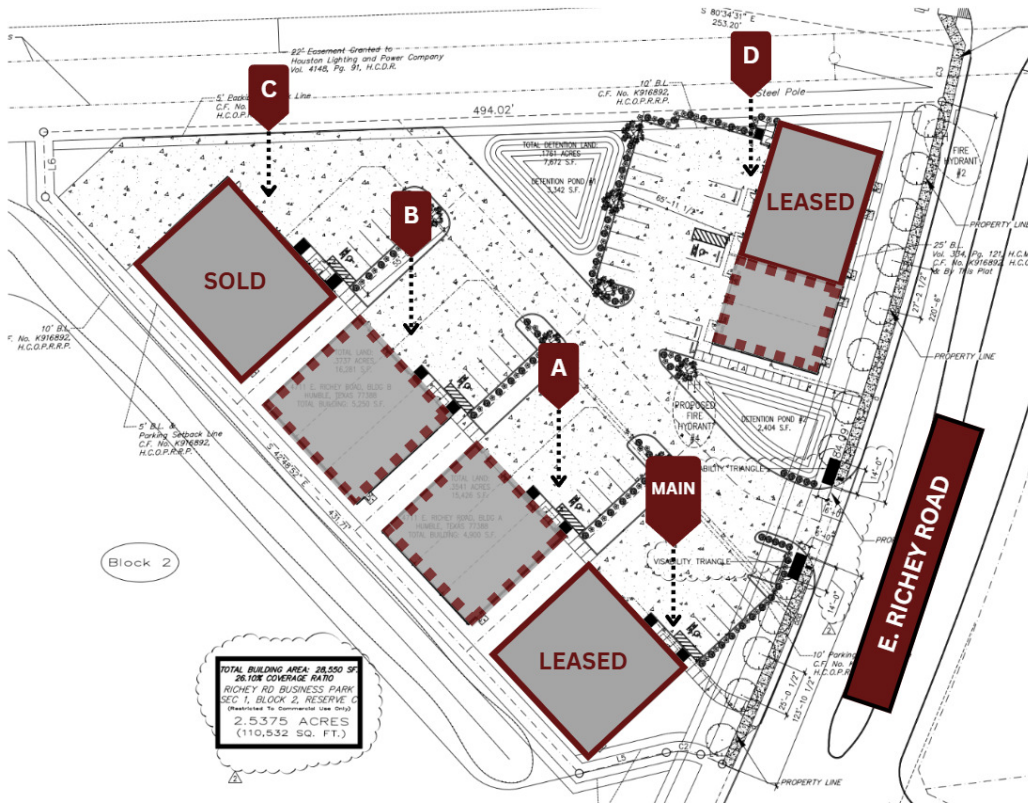
JASON PATE
Broker Associate
214.632.2242
jason.pate@revkocre.com



All information furnished regarding property for sale, rental or financing is from sources deemed reliable, but no warranty or representation is made to the accuracy thereof and same is submitted to errors, omissions, change of price, rental or other conditions prior to sale, lease or financing or withdrawal without notice. No liability of any kind is to be imposed on the broker herein.

4711 RICHEY ROAD # D | HUMBLE, TX 77338

FOR LEASE



JONATHAN SELLERS

CEO
832.748.1283
jonathan.sellers@revkocre.com

JASON PATE

Broker Associate
214.632.2242
jason.pate@revkocre.com



All information furnished regarding property for sale, rental or financing is from sources deemed reliable, but no warranty or representation is made to the accuracy thereof and same is submitted to errors, omissions, change of price, rental or other conditions prior to sale, lease or financing or withdrawal without notice. No liability of any kind is to be imposed on the broker herein.

