

# AVAILABLE FOR SALE

1013-1033 CENTER STREET | SAN CARLOS, CA

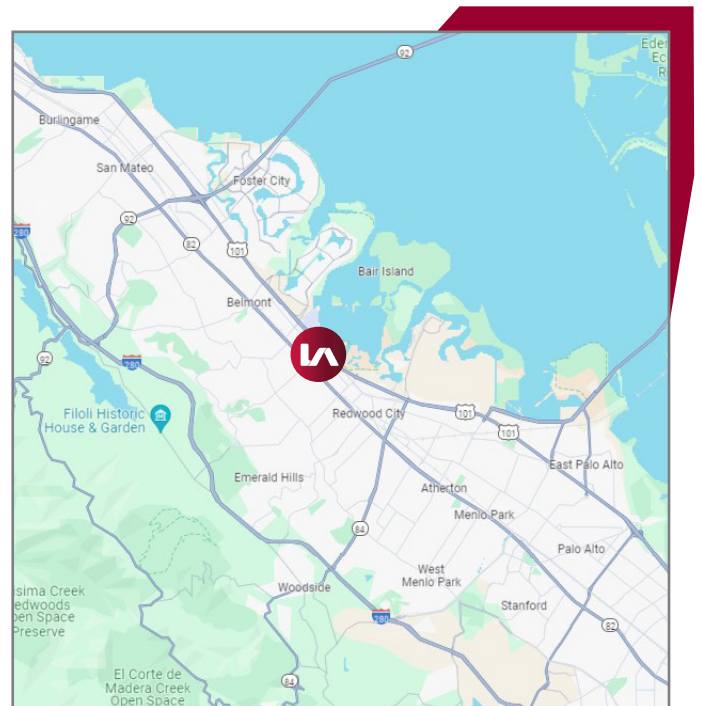


COMMERCIAL REAL ESTATE SERVICES



## LISTING DATA:

- 8,500± SF Freestanding Industrial/Flex Building
- 5,583± SF Manufacturing/Warehouse
- 2,917± SF Office/Showroom
- 15,000± SF Lot
- 5,980± SF Fenced Yard w/ Private Entrance
- 3 Grade Level Doors
- 13' - 16' Clear Height
- Zoning: IA (Industrial Arts)
- 3 Unisex Restrooms
- Call Exclusive Agent for Pricing



## EXCLUSIVE AGENT:

Garrett Drew, Principal

E \\ [gdrew@lee-associates.com](mailto:gdrew@lee-associates.com)

P \\ 510.903.7613 | LIC# 01923730

Lee & Associates Oakland Commercial Real Estate \ 520 3rd Street, Suite 105, Oakland, CA 94607 \ [www.lee-associates.com](http://www.lee-associates.com)

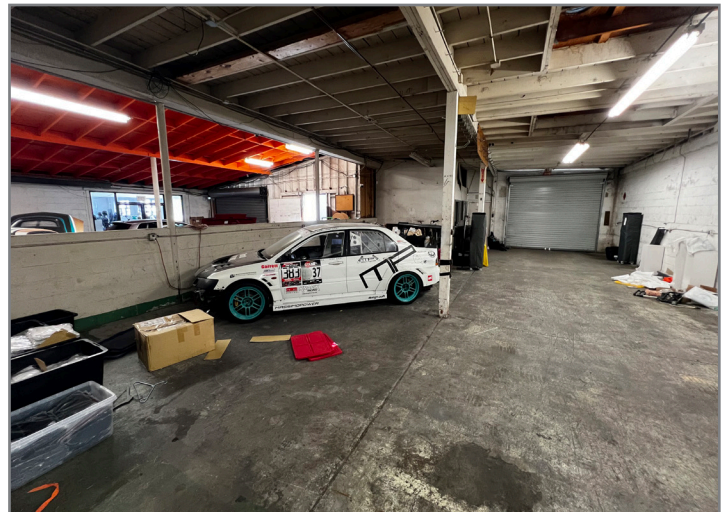
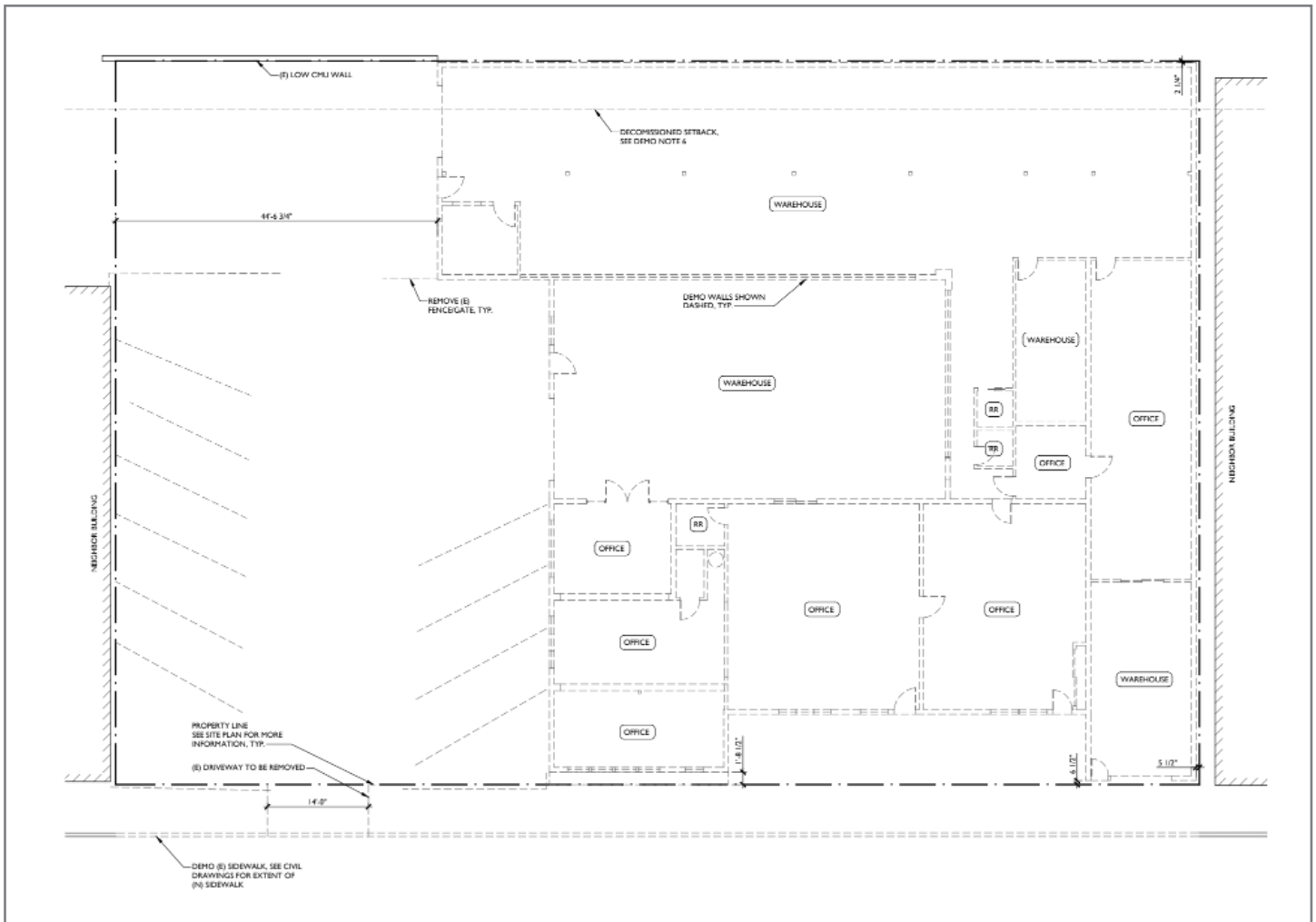
*All information furnished regarding property for sale, rental or financing is from sources deemed reliable, but no warranty or representation is made to the accuracy thereof and same is submitted to errors, omissions, change of price, rental or other conditions prior to sale, lease or financing or withdrawal without notice. No liability of any kind is to be imposed on the broker herein.*

# AVAILABLE FOR SALE

1013 CENTER STREET | SAN CARLOS, CA



COMMERCIAL REAL ESTATE SERVICES



## EXCLUSIVE AGENT:

Garrett Drew, Principal

E \\ [gdrew@lee-associates.com](mailto:gdrew@lee-associates.com)

P \\ 510.903.7613 | LIC# 01923730

Lee & Associates Oakland Commercial Real Estate | 520 3rd Street, Suite 105, Oakland, CA 94607 | [www.lee-associates.com](http://www.lee-associates.com)

All information furnished regarding property for sale, rental or financing is from sources deemed reliable, but no warranty or representation is made to the accuracy thereof and same is submitted to errors, omissions, change of price, rental or other conditions prior to sale, lease or financing or withdrawal without notice. No liability of any kind is to be imposed on the broker herein.