

SUBLEASE



MEDICAL OFFICE

1705 E INDUSTRIAL DRIVE, TERRE HAUTE, IN 47902



PROPERTY OVERVIEW

Former Fresenius Dialysis Clinic available for sublease, located just south of Terre Haute, Indiana. This property boasts excellent visibility along US 41, which experiences an average daily traffic count of approximately 20,299 vehicles. The space includes a patient-friendly portico entrance and a monument sign along Industrial Drive for added exposure. Additionally, the building offers ample parking for both employees and patients.

PROPERTY HIGHLIGHTS

- Lease expiration date of 10/31/2029
- Freestanding building featuring a portico
- Private parking lot with 40 parking spaces
- Highly visible from US Hwy 41 which sees 20,299 ADDT
- Property is zoned C-4 which permits a wide array of uses

LEASE RATE

CONTACT BROKER

Available SF:

7,936 SF



BRADLEY COMPANY

310 E. 96th St., Suite 100
Indianapolis, IN 46240
317.663.6000

PAT O'HARA

Senior Vice President
317.796.4733
pohara@bradleyco.com

NATHAN ROBINSON

Broker
248.721.1409
nrobinson@bradleyco.com



BRADLEYCO.COM



1705 EAST INDUSTRIAL DRIVE, TERRE HAUTE, IN 47802

SUBLEASE

MEDICAL OFFICE



PAT O'HARA
Senior Vice President
317.796.4733
pohara@bradleyco.com

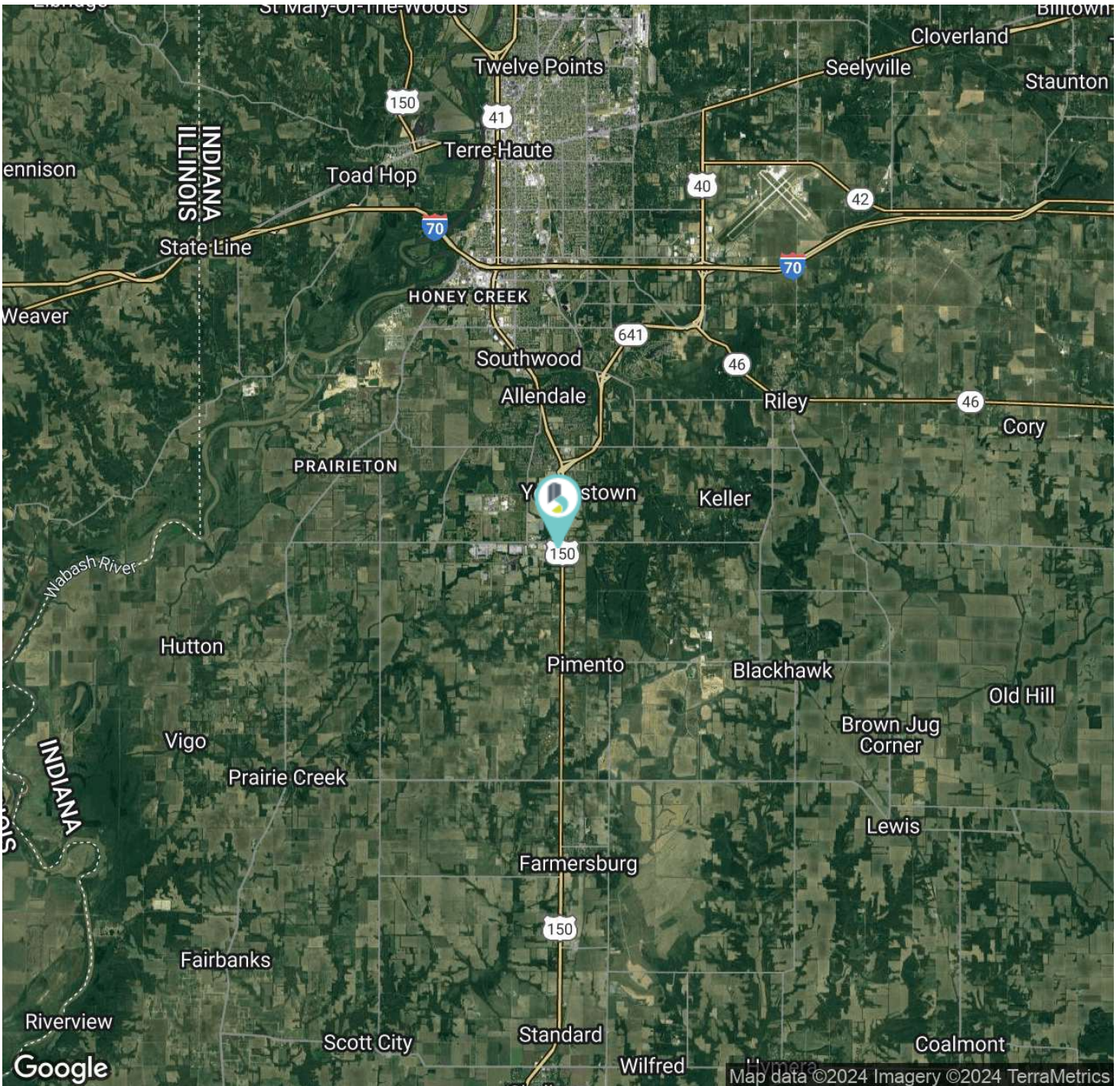
NATHAN ROBINSON
Broker
248.721.1409
nrobinson@bradleyco.com



1705 EAST INDUSTRIAL DRIVE, TERRE HAUTE, IN 47802

SUBLEASE

MEDICAL OFFICE



PAT O'HARA
 Senior Vice President
 317.796.4733
 pohara@bradleyco.com

NATHAN ROBINSON
 Broker
 248.721.1409
 nrobinson@bradleyco.com