

# FOR LEASE

314 E NAKOMA DR, STE. W4-W5, SAN ANTONIO, TX



**1,127 - 5,187 SF Flex Spaces Available**

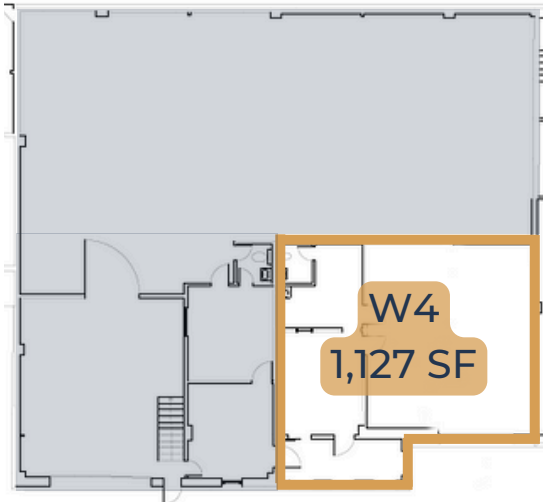
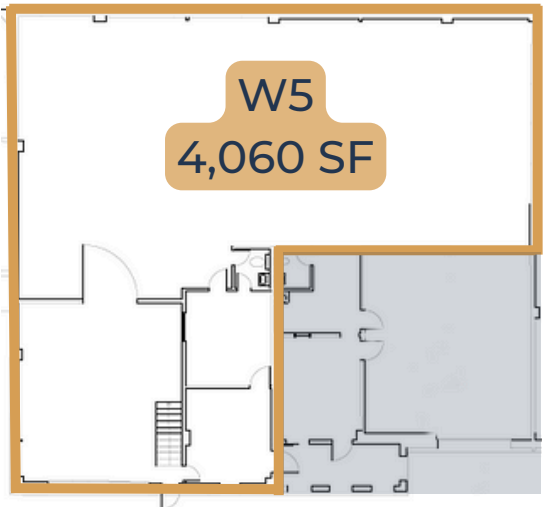
## ABOUT THE PROPERTY:

314 E Nakoma Drive is a 25,441 SF multi-tenant Industrial project in San Antonio's North Central Submarket. 5,000 SF of flex space is currently available. Tenants benefit from grade-level loading, climate-controlled warehouse, and quick access to US-281, Wurzbach Pkwy, Loop 410, and Loop 1604.

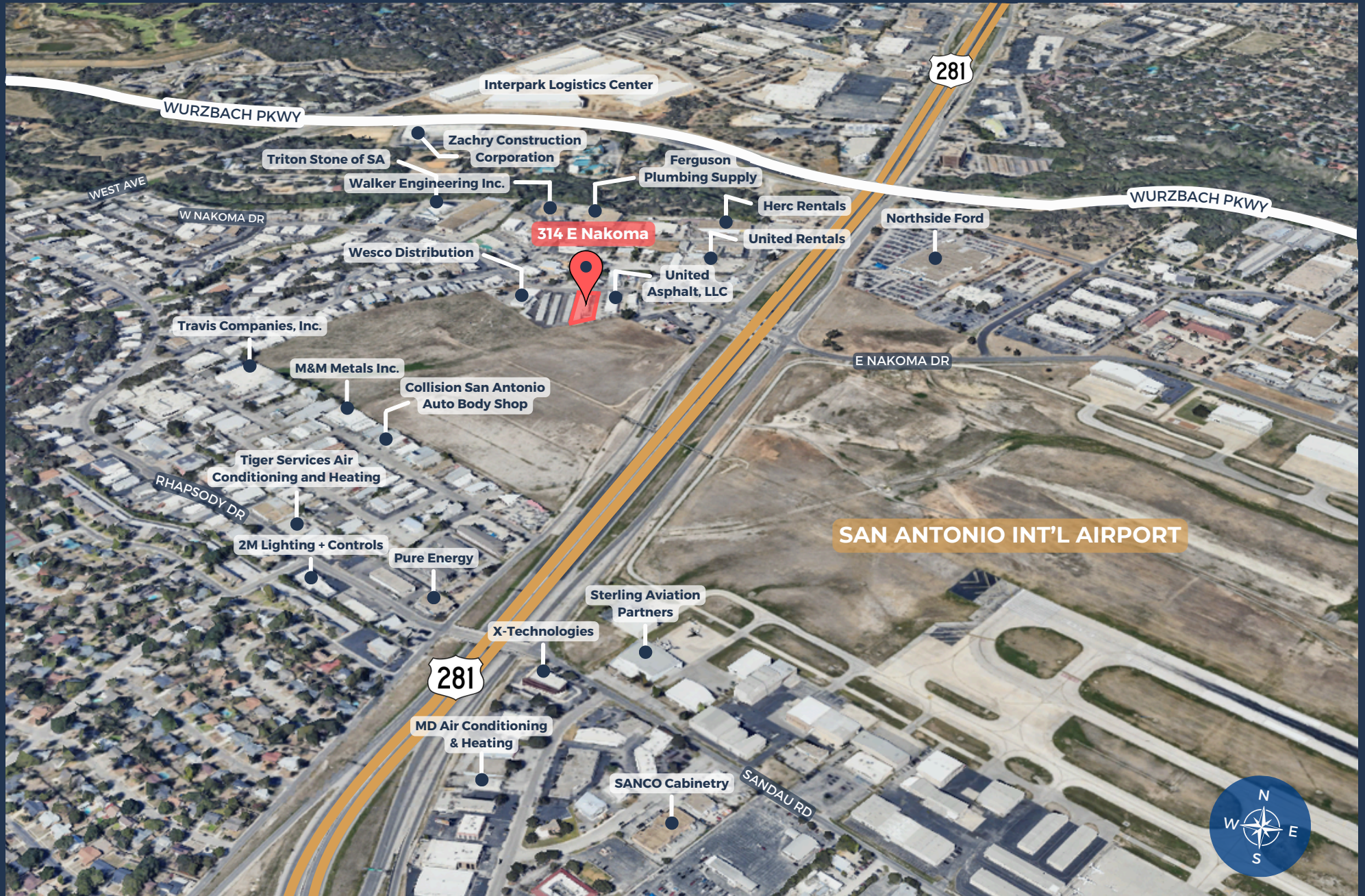
## FEATURES:

- 1,127 - 5,187 SF available now
- Two grade-level loading doors
- Climate controlled warehouse
- Quick access to US-281, Wurzbach Pkwy, Loop 410, and Loop 1604
- Renovations underway

# SITE PLAN



# AREA OVERVIEW





# CONTACT OUR TEAM



**Colin McLellan**  
Senior Associate  
cmclellan@llanorealty.com  
(210) 908-6345



**Chris Moran**  
Associate  
cmoran@llanorealty.com  
(210) 951-5689



**Jake Esparza**  
Associate  
jesparza@llanorealty.com  
(210) 874-5314