



331 Park Ave S

331 Park Ave S, New York, NY 10010

BY **ora**



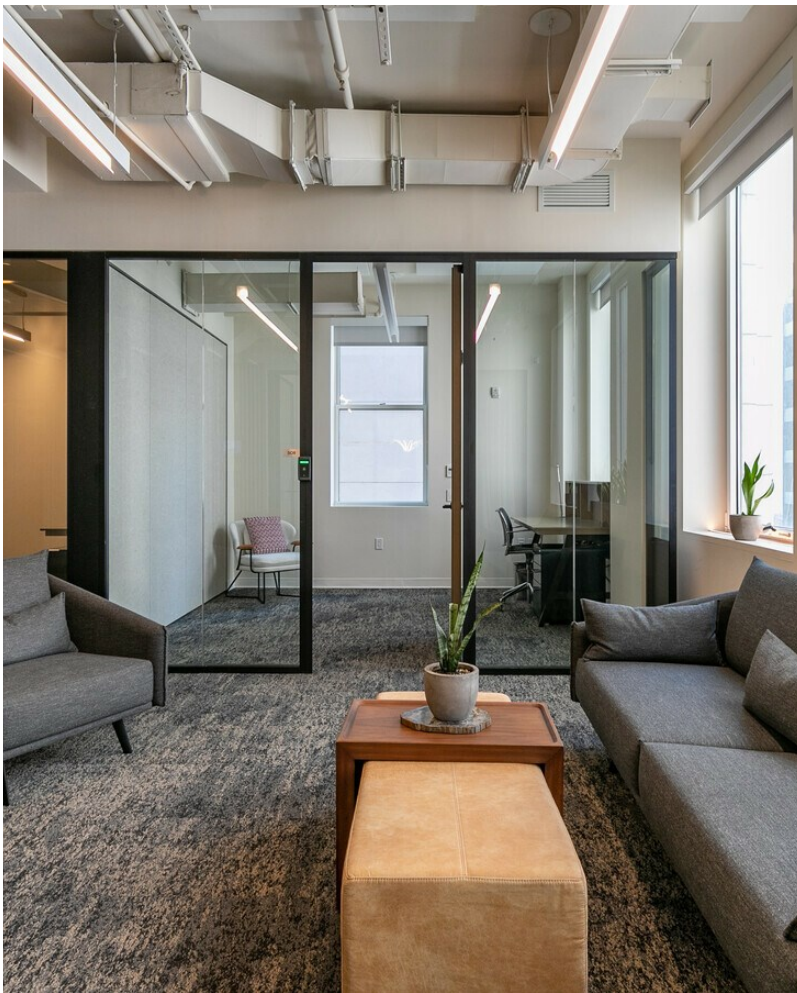
Kyle Manning

6 Greene Realty

6 Greene St, New York, NY 10013

kyle@by-ora.com

(443) 528-3004



331 Park Ave S

Upon Request

331 Park Avenue S is a Midtown Manhattan boutique office building in New York City. Spanning 45,000 SF on 12-stories, experience highly designed and customizable workspaces that will set up businesses for success. Amenities include 24/7 building accessibility through a mobile key app, on-demand meeting rooms with seamless Zoom video conferencing, and fully furnished work environments.

Choose...

- Boutique office building in Midtown Manhattan offering fully furnished and customizable workspaces.
- Availability ranges from a single desk to private offices, full floors, and 45-employee capacity environments.
- Featuring all-inclusive lease rates and amenities such as 24-hour building accessibility and Zoom-enabled conference rooms.
- 331 Park Avenue S is located in the Gramercy Park neighborhood in the proximity of parks, dining options, and more.



Rental Rate:	Upon Request
Property Type:	Office
Building Class:	A
Rentable Building Area:	45,000 SF
Year Built:	1914
Walk Score ®:	100 (Walker's Paradise)
Transit Score ®:	100 (Rider's Paradise)
Rental Rate Mo:	Upon Request

2nd Floor

1

Space Available	800 SF
Rental Rate	Upon Request
Date Available	Now
Service Type	Negotiable
Space Type	Relet
Space Use	Office
Lease Term	1 - 5 Years

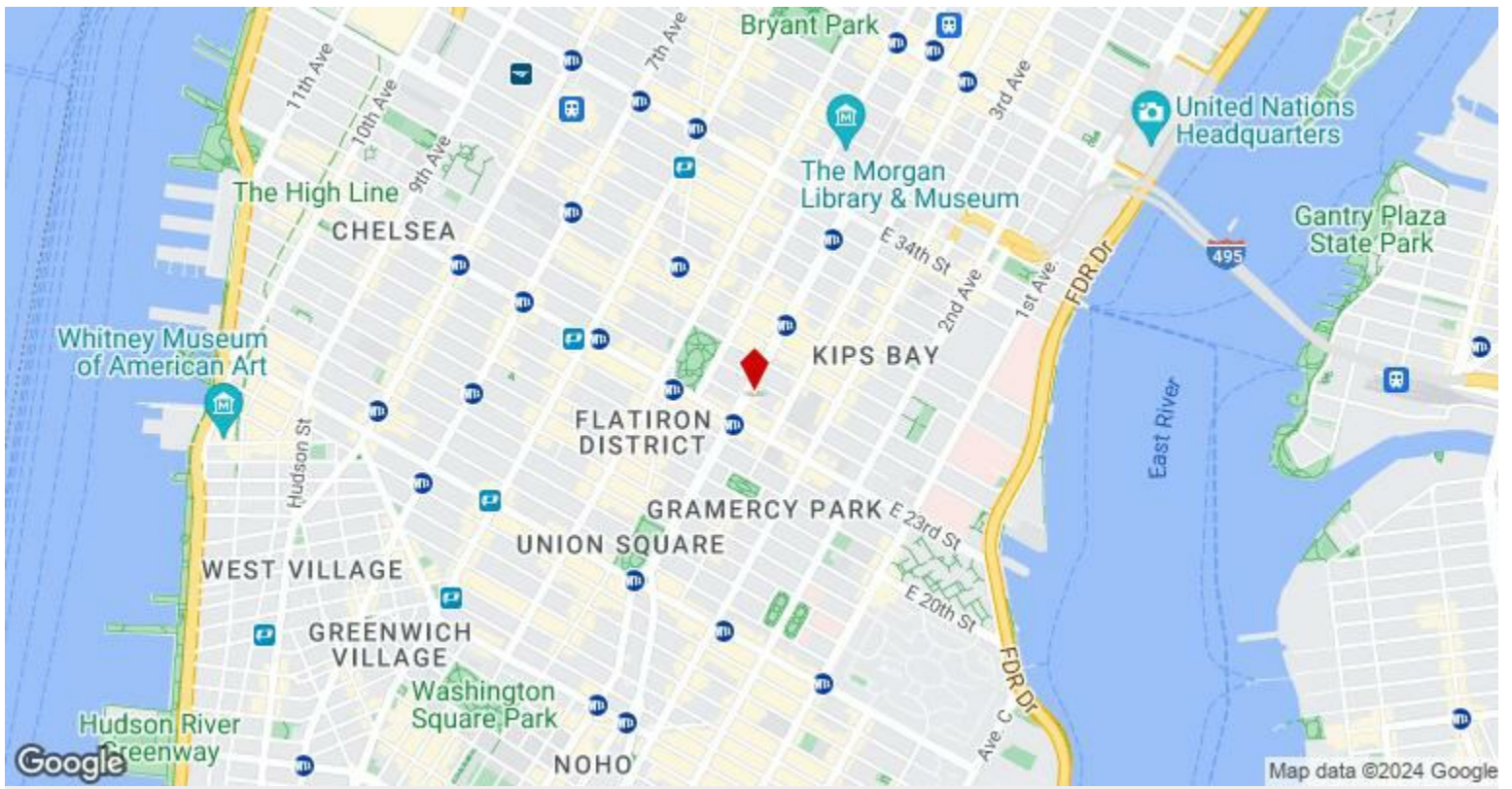
Private suite, high-end existing installation that is fully furnished and wired, lobby entrance on Park Avenue South, 2 private offices, bullpen area to accommodate soft seating or desks, 3 bathrooms on the floor, tenant controls HVAC, and CAM included in rent

9th Floor

2

Space Available	3,310 SF
Rental Rate	Upon Request
Date Available	Now
Service Type	Negotiable
Built Out As	Standard Office
Space Type	Relet
Space Use	Office
Lease Term	Negotiable

Full floor presence, high-end existing installation that is fully furnished and wired, lobby entrance on Park Avenue South, 6 private offices, conference room, 2 bathrooms, tenant controls HVAC, and CAM included in rent



331 Park Ave S, New York, NY 10010

331 Park Avenue S is a Midtown Manhattan boutique office building in New York City. Spanning 45,000 SF on 12-stories, experience highly designed and customizable workspaces that will set up businesses for success. Amenities include 24/7 building accessibility through a mobile key app, on-demand meeting rooms with seamless Zoom video conferencing, and fully furnished work environments.

Choose from a single desk, individual office, or partial and full floor options that can accommodate up to 45 employees. Rent includes fully built space, custom furniture, cleaning, CISCO Wi-Fi networking, CAM, electric, access to the amenity floor, concierge/front desk attendant services, and more. Situated in the Gramercy Park neighborhood, 331 Park Avenue S is within steps of quality restaurants, retail shopping, and scenic parks.

Property Photos



Gramercy Park Location

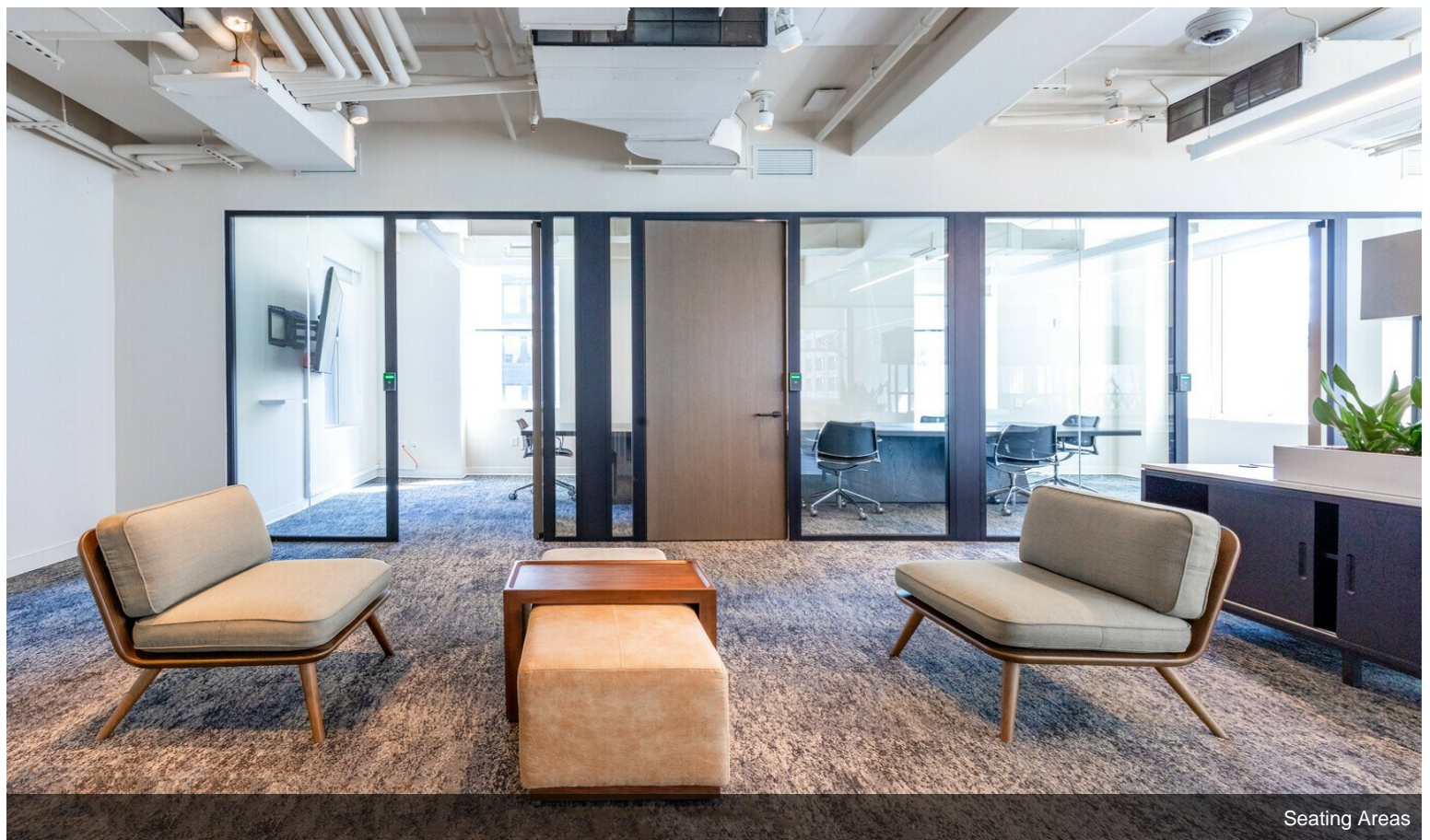


Amenities Floor

Property Photos

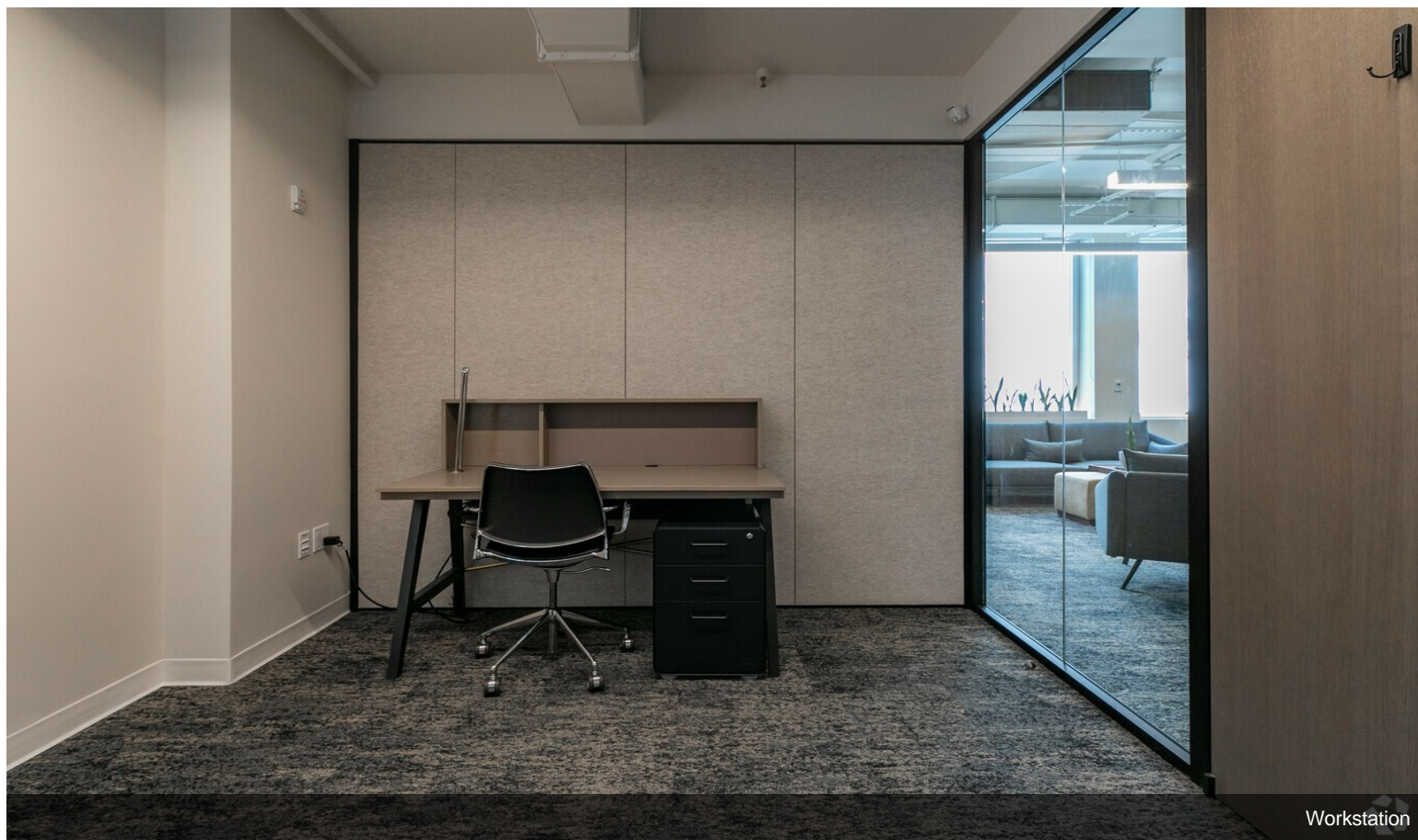
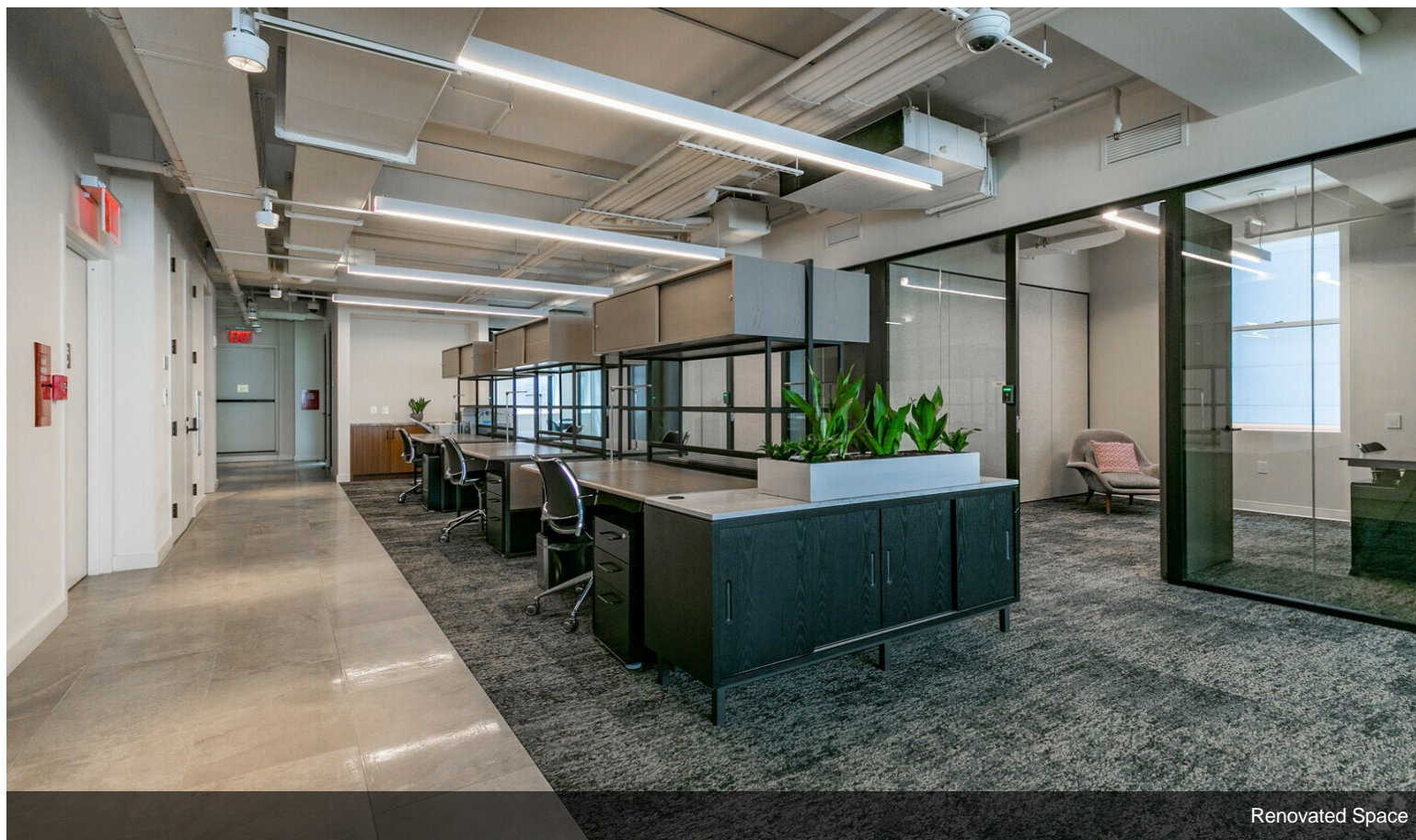


Employee Kitchens

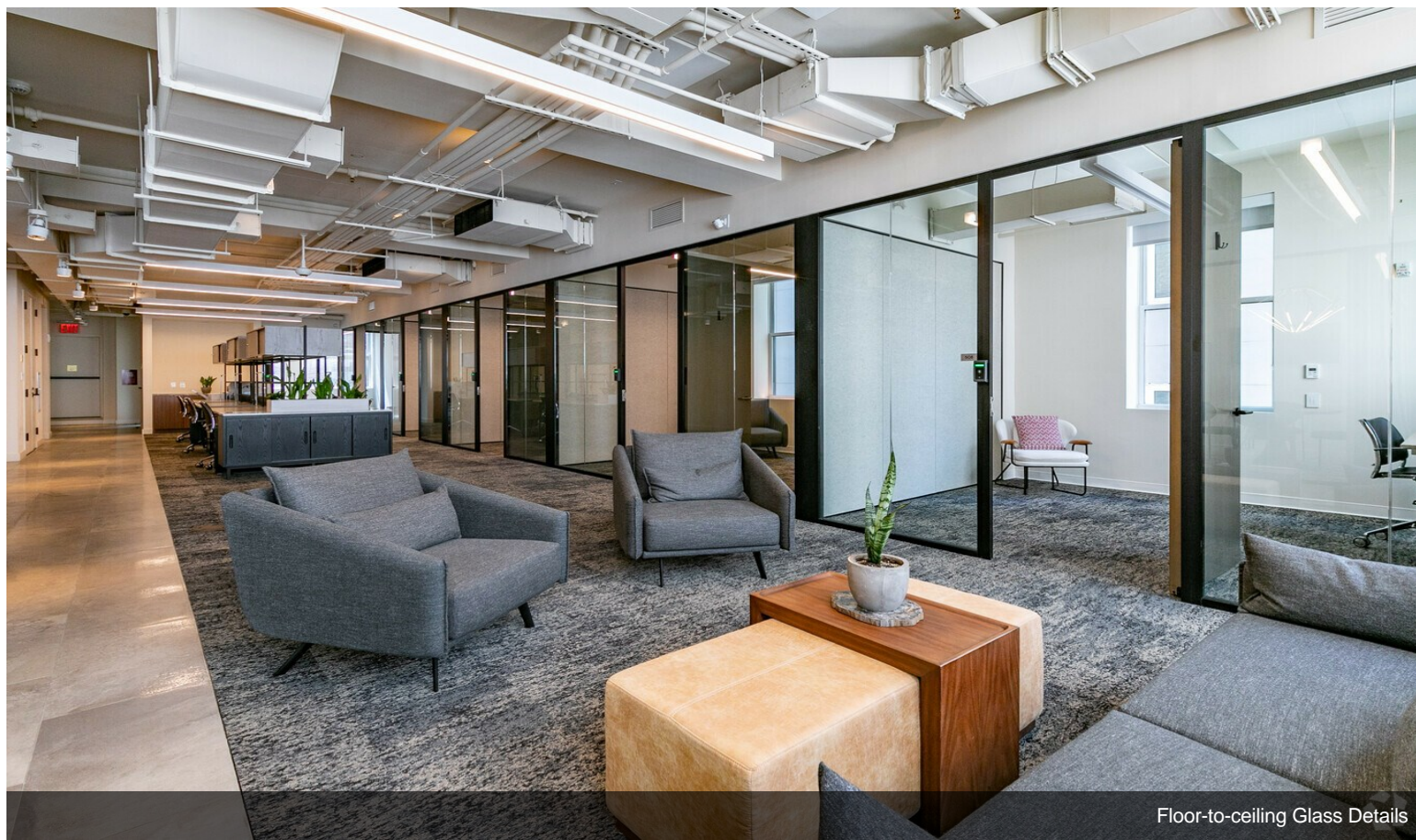


Seating Areas

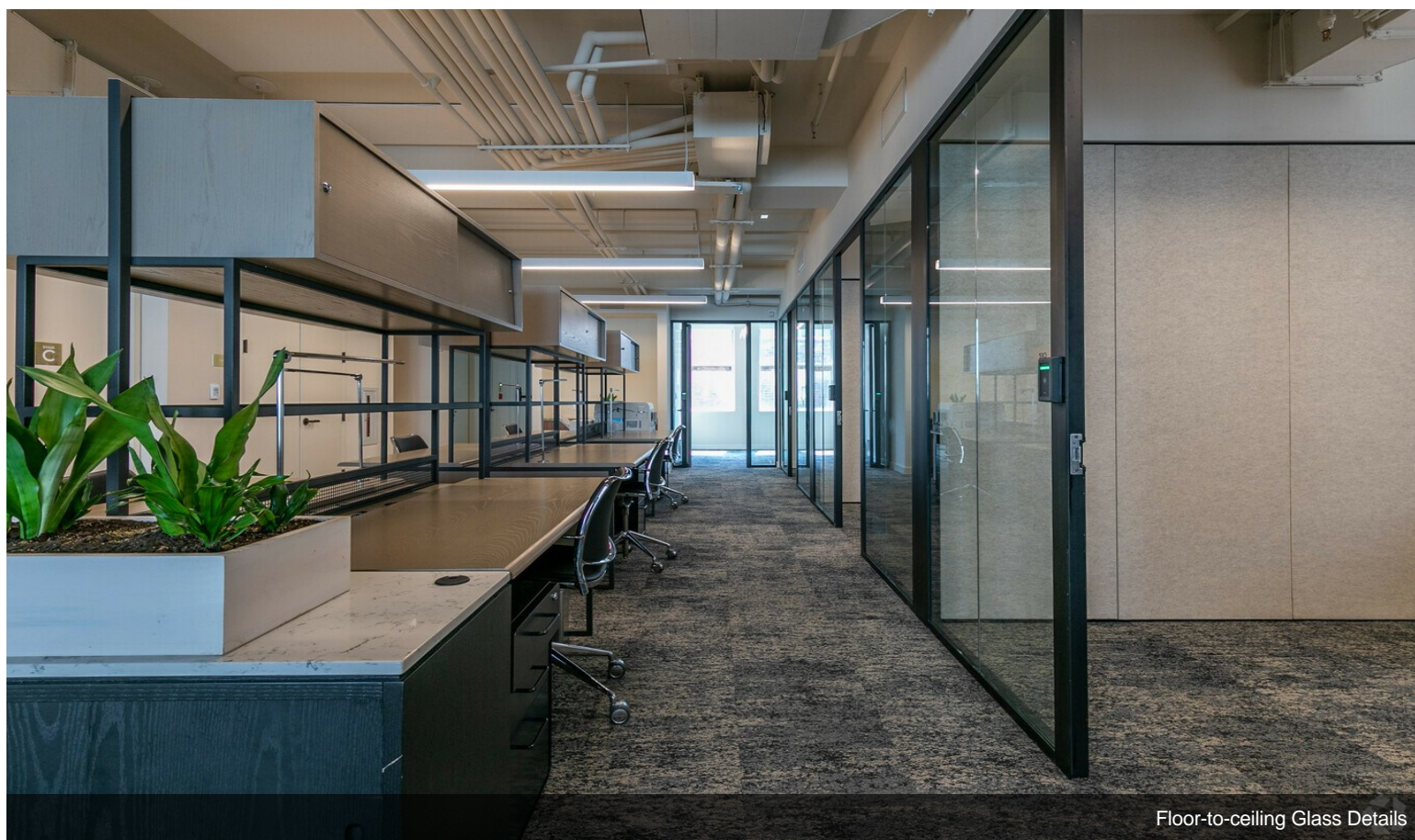
Property Photos



Property Photos

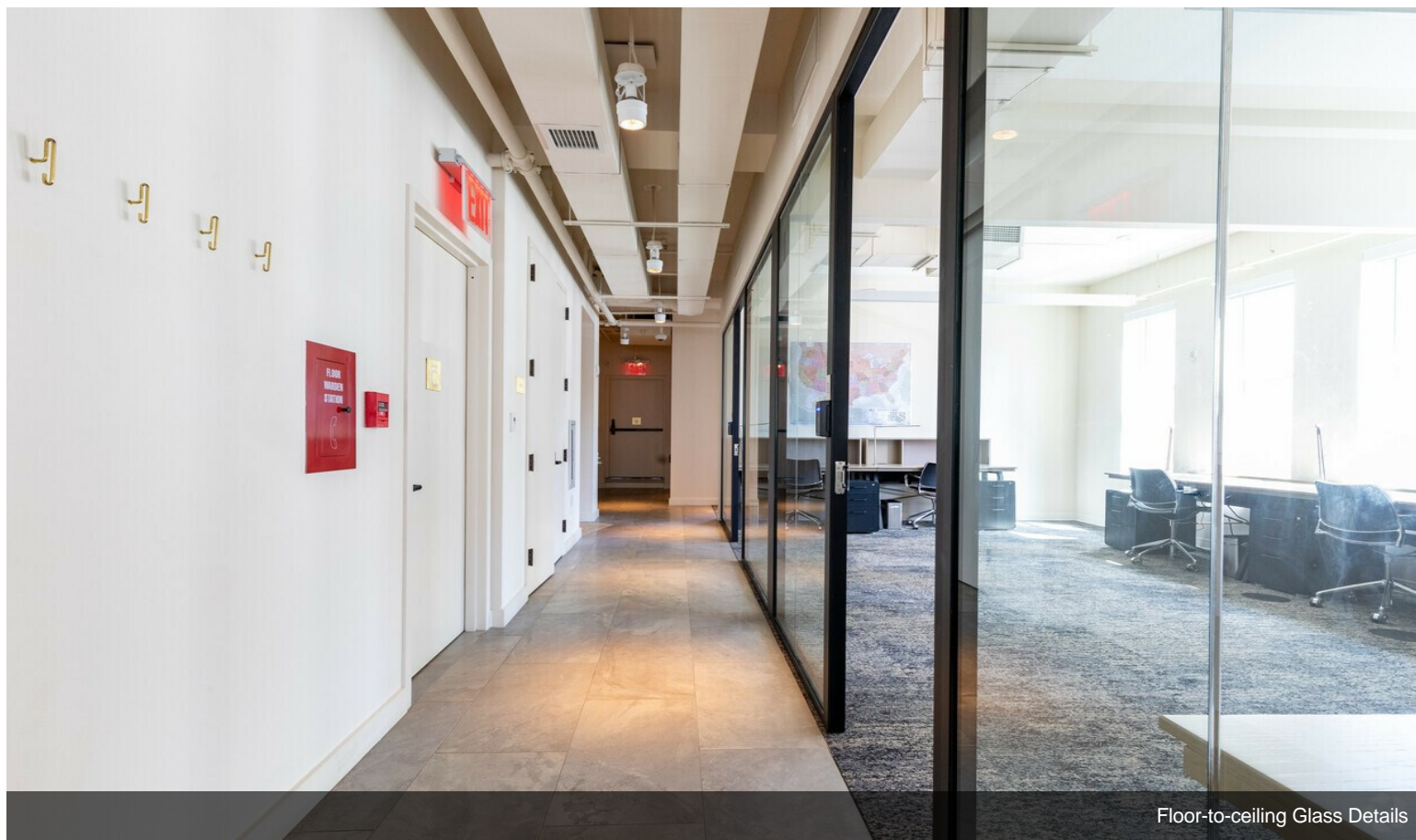


Floor-to-ceiling Glass Details



Floor-to-ceiling Glass Details

Property Photos

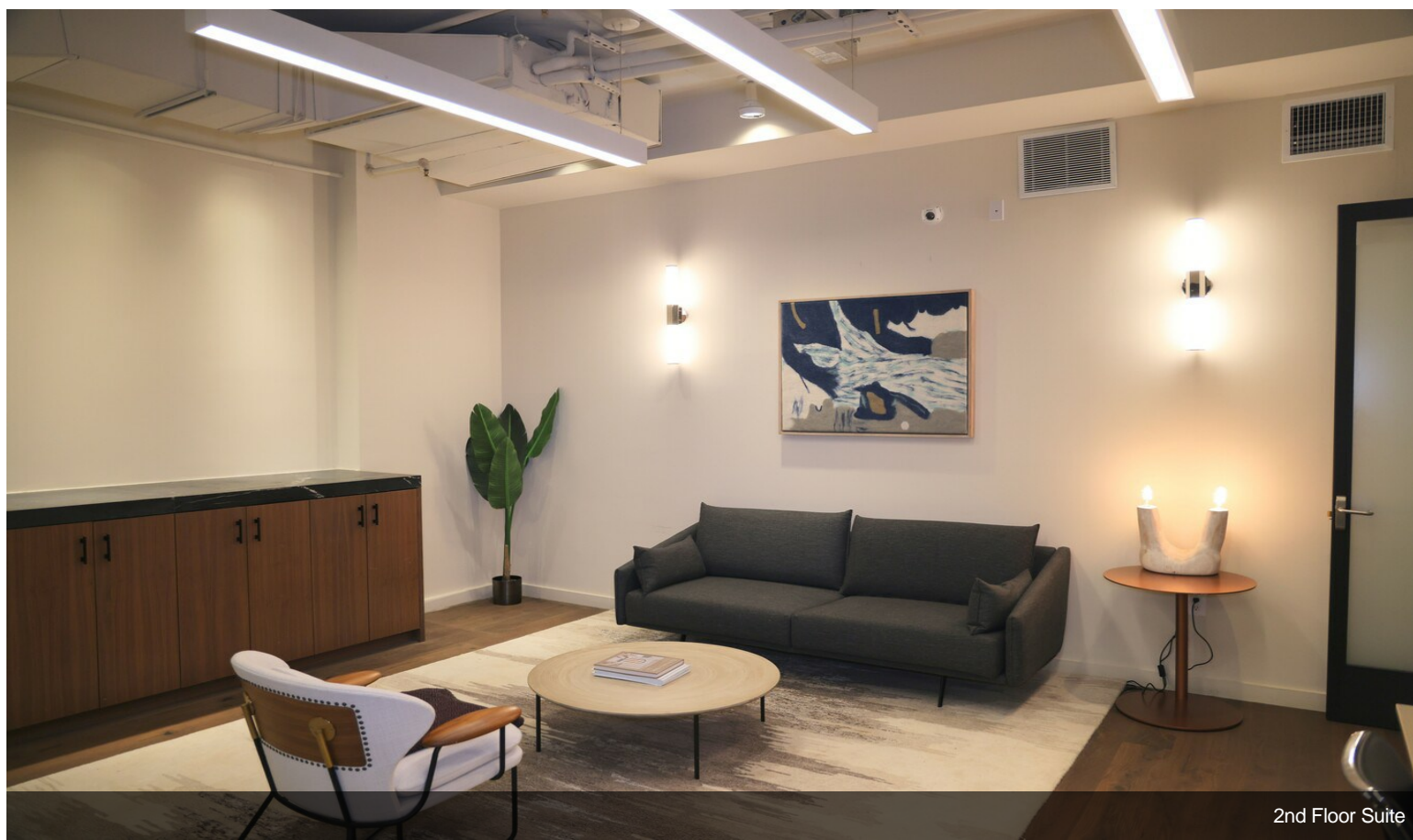


Floor-to-ceiling Glass Details



2nd Floor Suite #5

Property Photos



2nd Floor Suite

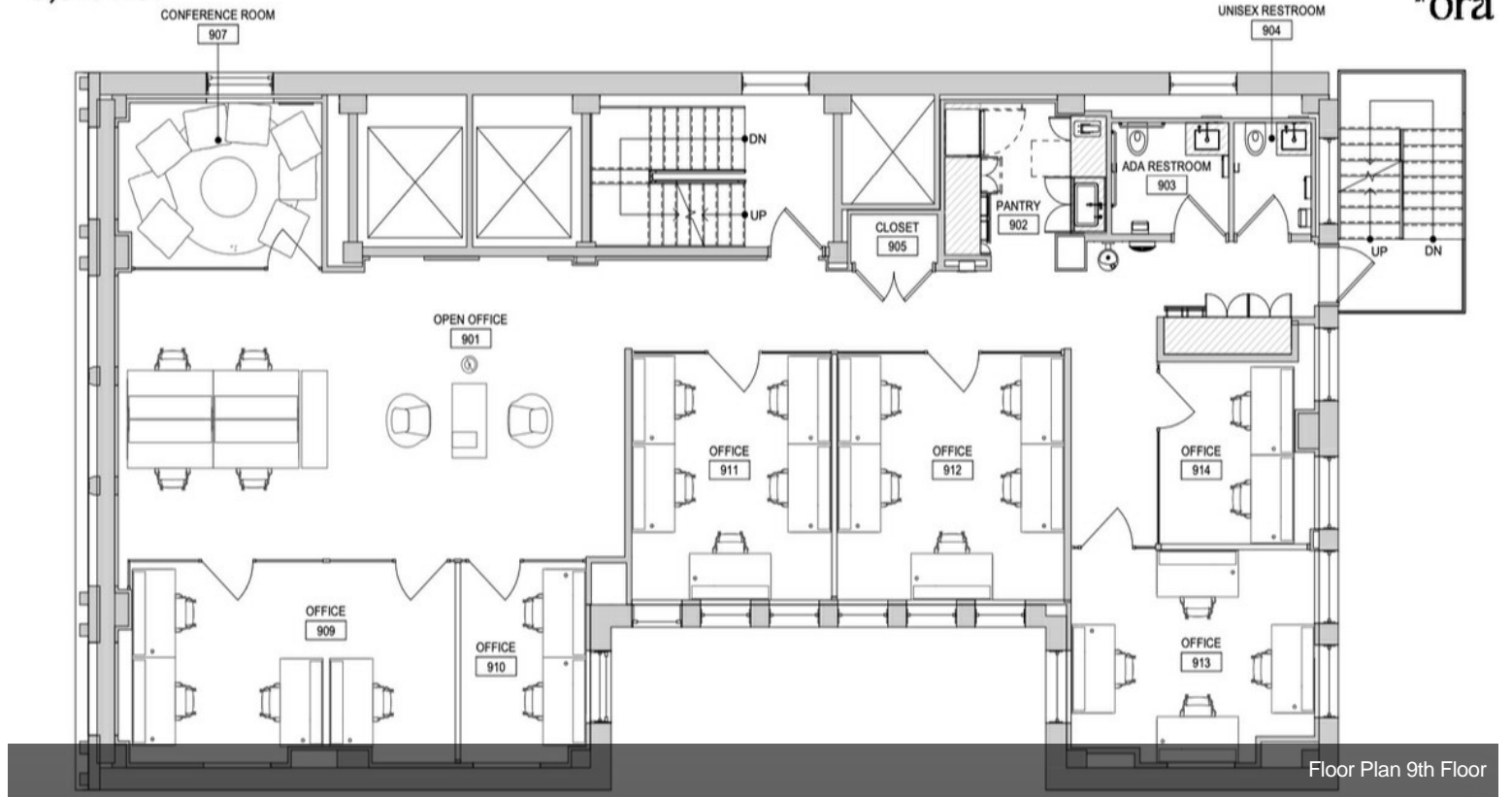


2nd Floor Suite Office

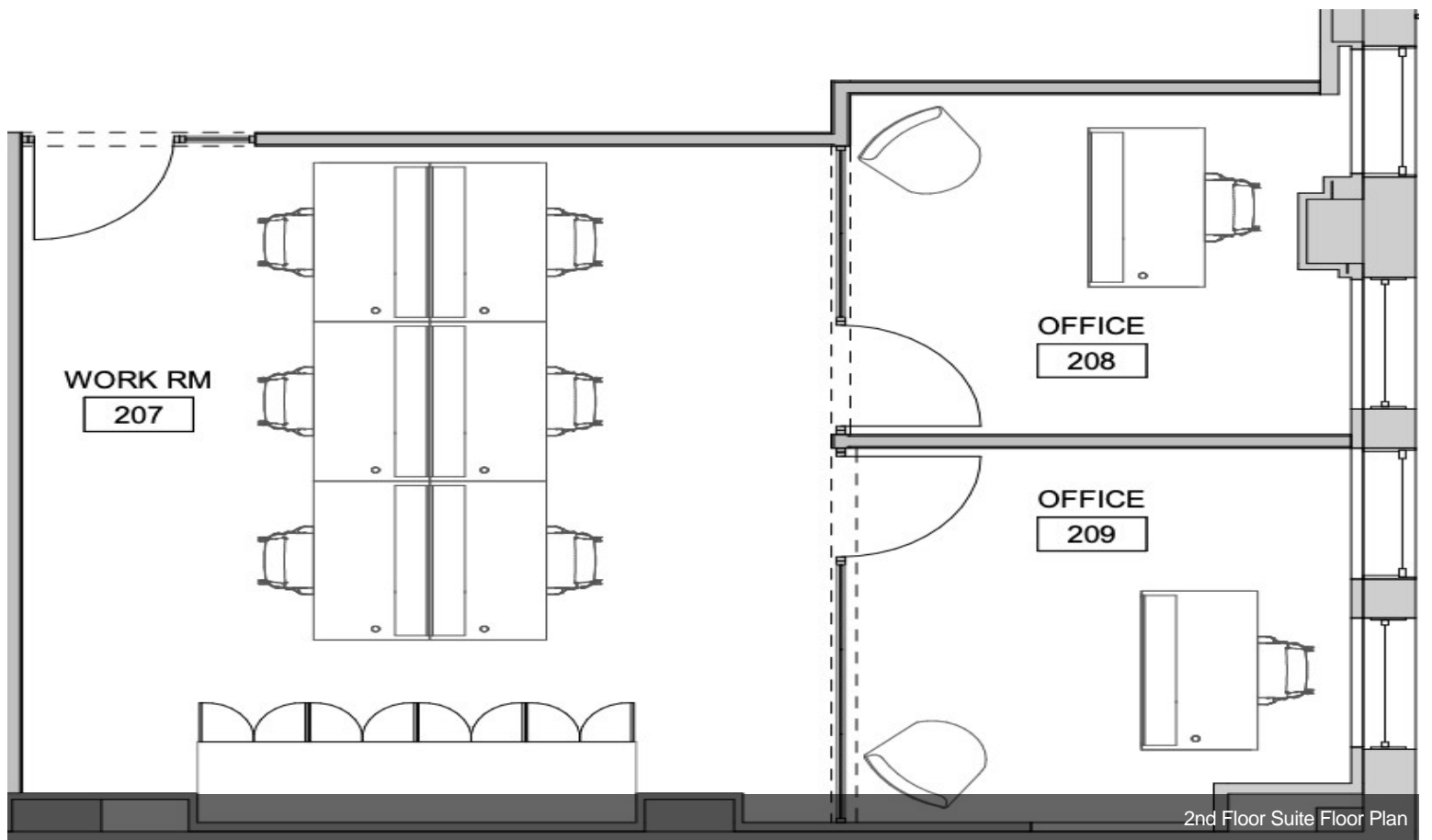
Property Photos

9TH FLOOR
3,310 RSF

331 Park Ave S
ora



Floor Plan 9th Floor



2nd Floor Suite Floor Plan