



2100 Stella Court

COLUMBUS, OHIO
GRANDVIEW SUBMARKET

Sale Price

\$2,550,000

Lease Rate

Please Inquire

Property Type for Sale/Lease

Office

Building Size

58,161 SF

Space Available

58,161 SF

Property Highlights

- Owner occupant, adaptive reuse or redevelopment opportunity
- Conveniently located near freeway access (I-70, I-670) and minutes away from downtown Columbus
- Monument signage available on Dublin Road
- Built in 1973

Land Size

2.35 AC

Parking

Over 200 Spaces

For information, please contact:

Wayne Harer, CCIM, SIOR

Executive Managing Director

t 614-883-1051

wayne.harer@nmrk.com

Cory Kooperman

Managing Director

t 614-883-1035

cory.kooperman@nmrk.com

150 E. Broad Street, Suite 500

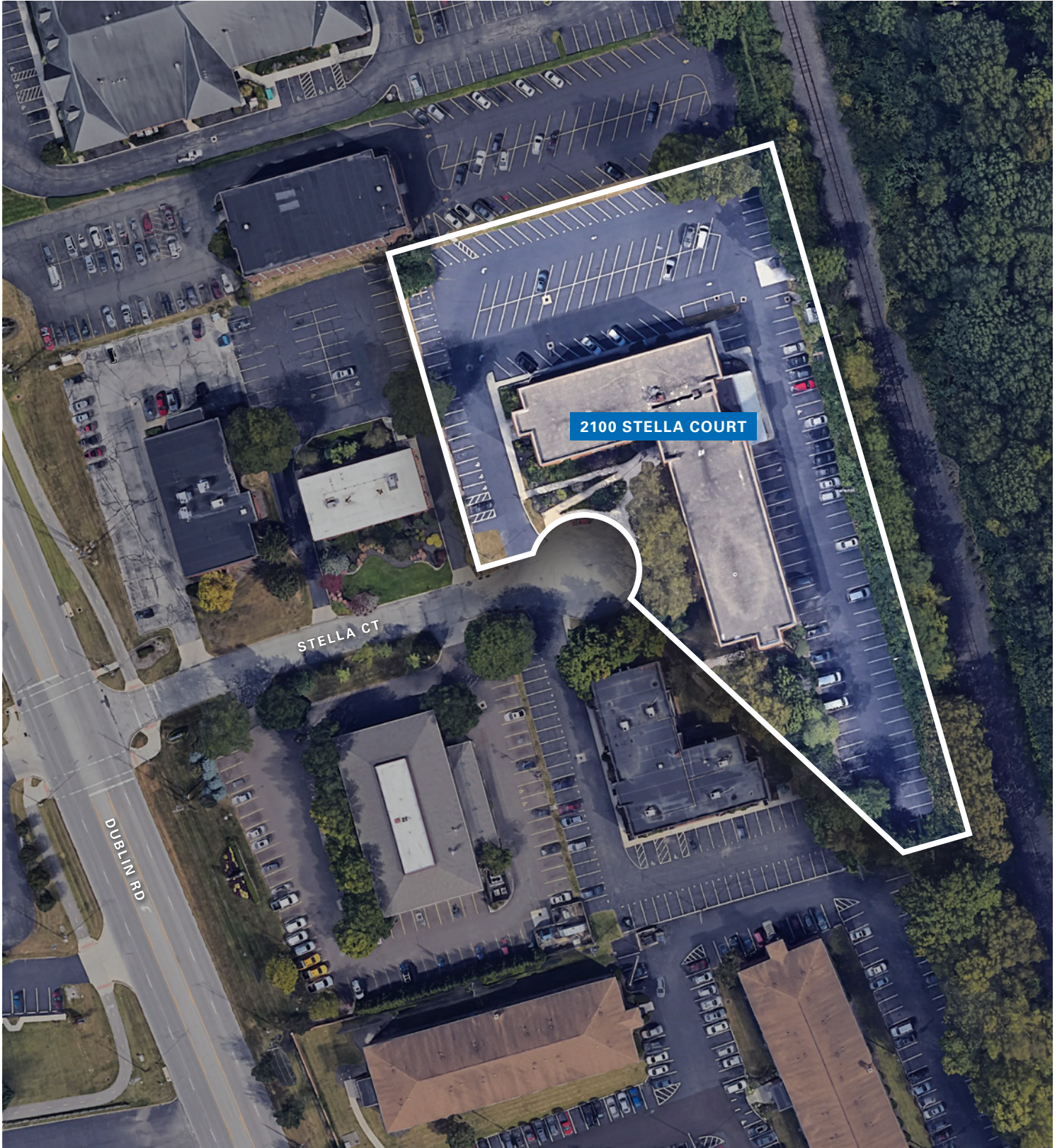
Columbus, Ohio 43215



nmrk.com

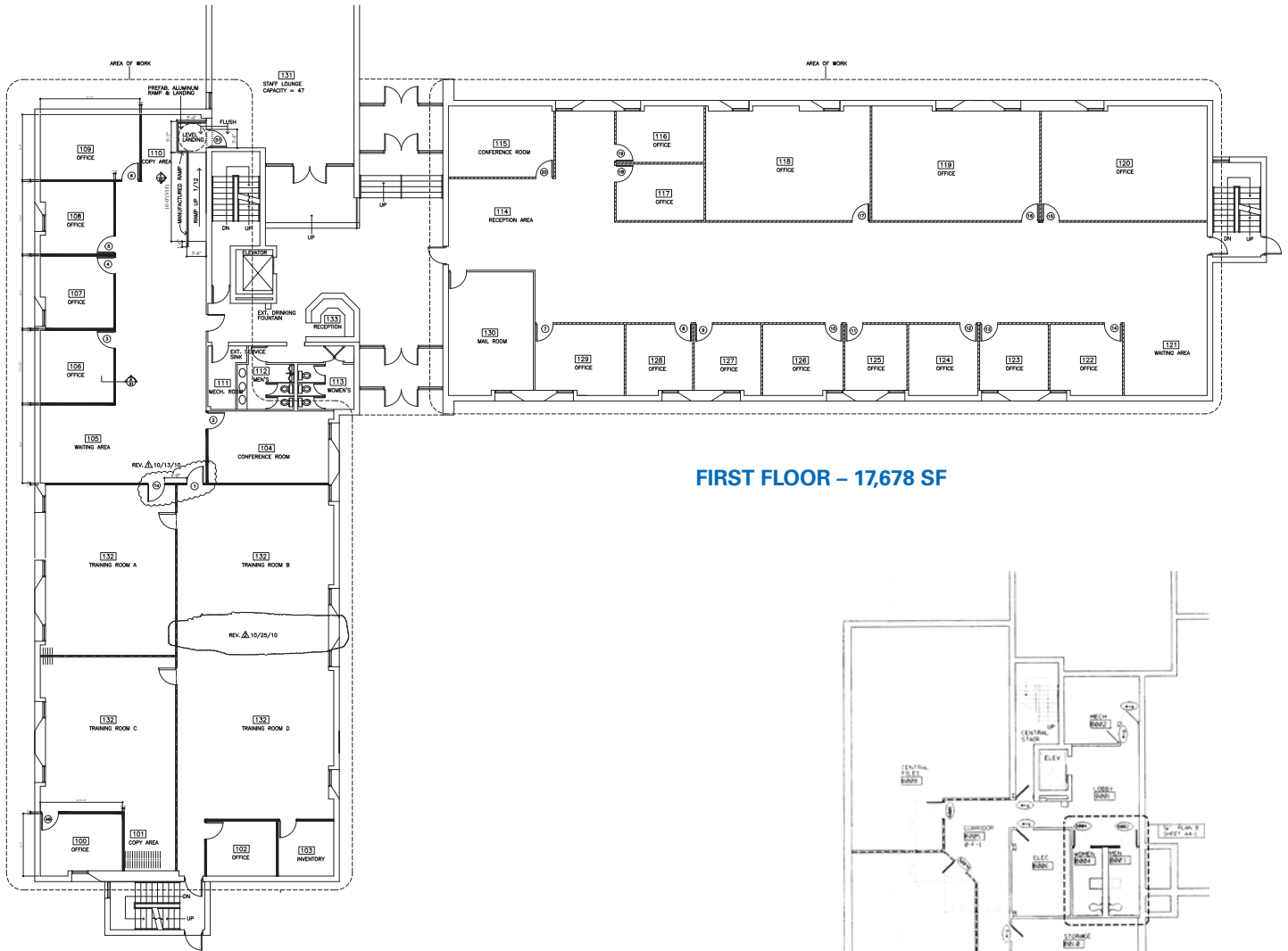
NEWMARK

The information contained herein has been obtained from sources deemed reliable but has not been verified and no guarantee, warranty or representation, either express or implied, is made with respect to such information. Terms of sale or lease and availability are subject to change or withdrawal without notice.

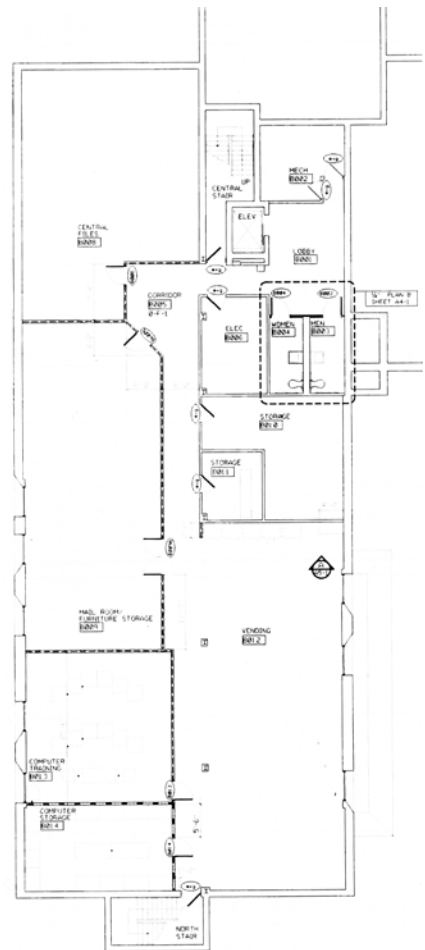




Floor Plans

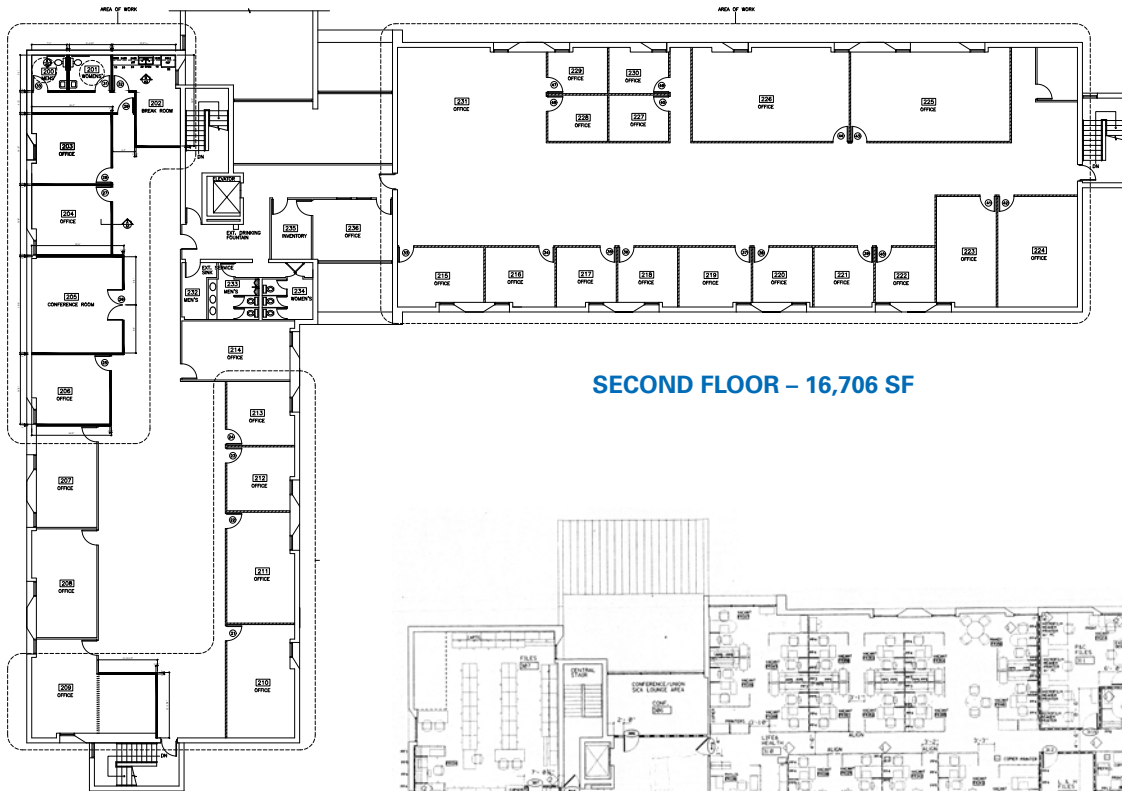


FIRST FLOOR – 17,678 SF

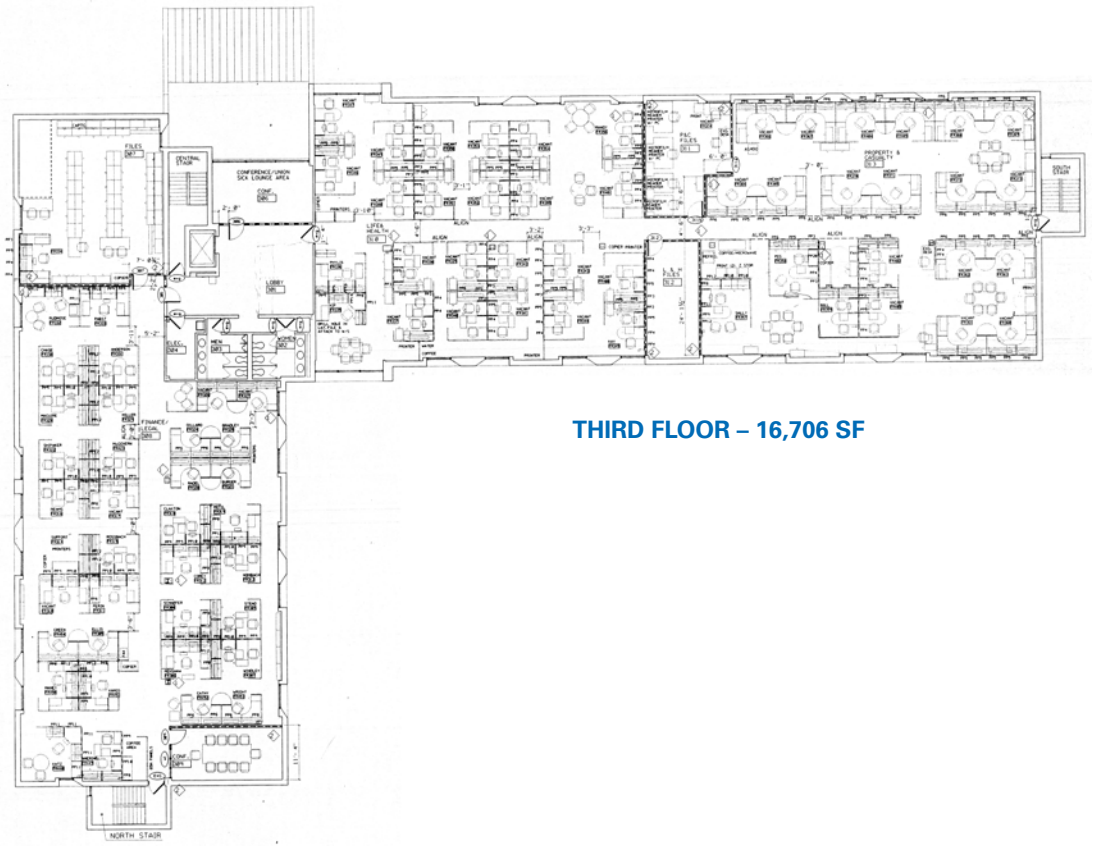


BASEMENT
7,071 SF

Floor Plans



SECOND FLOOR – 16,706 SF



THIRD FLOOR – 16,706 SF

2100 STELLA COURT



Estimated Population	1 mile	122,170
	3 miles	338,016
	5 miles	950,798
Population Growth	1 mile	1.5%
	3 miles	0.8%
	5 miles	0.1%
Average Household Income	1 mile	\$94,296
	3 miles	\$86,198
	5 miles	\$85,129
Median Home Value	1 mile	\$321,132
	3 miles	\$282,159
	5 miles	\$246,545
Total Consumer Spending	1 mile	\$1.5 B
	3 miles	\$4.1 B
	5 miles	\$11.2 B