



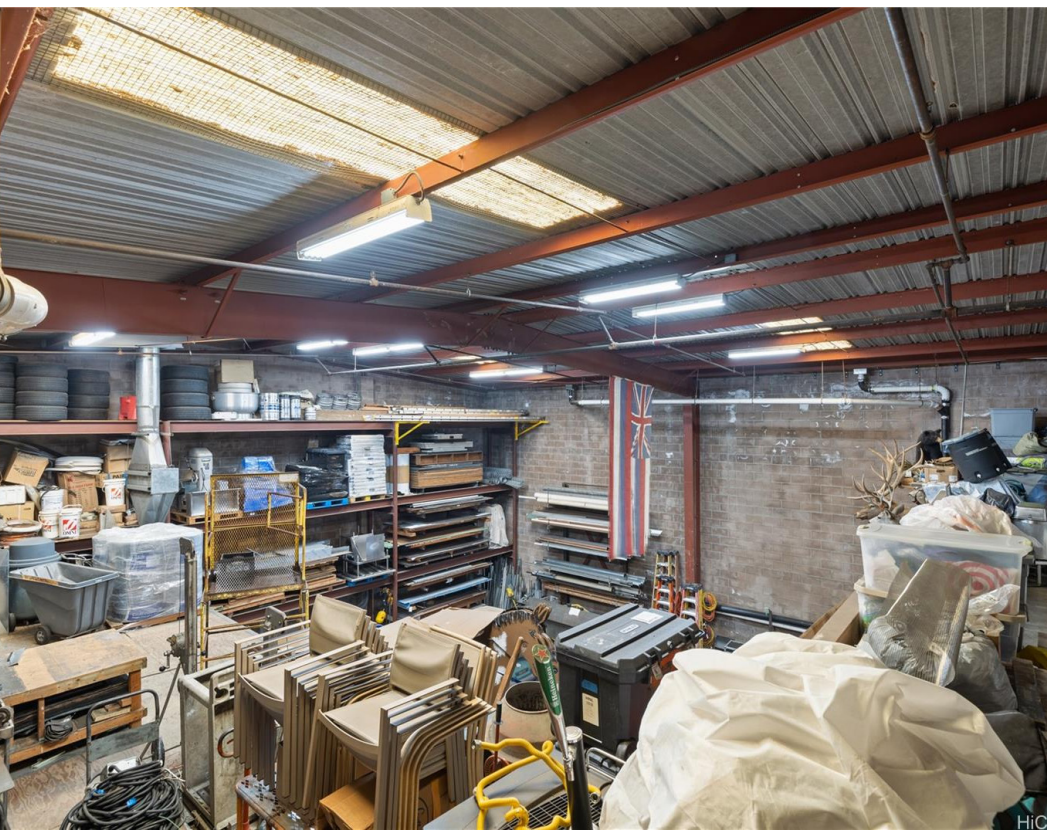
1628 Democrat Street

**KALIHI-KAI**

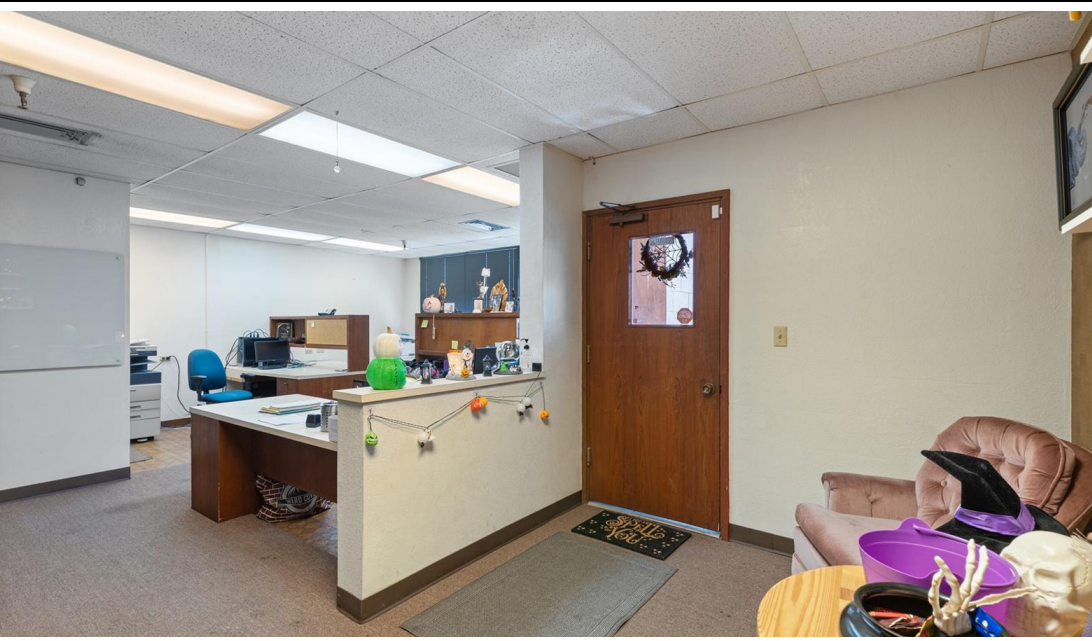


HONOLULU  
**1628 DEMOCRAT STREET**





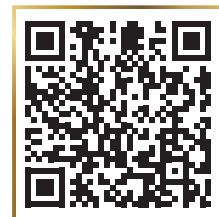
**KALIHI-KAI - 1628 DEMOCRAT STREET**



Industrial Warehouse/Office  
I-2 (Heavy Industrial) Zoning  
5,000 SF Land Area  
6,712 SF Interior Area

Built in 1975  
Property Tax: \$1,772/mo.  
MLS: 202424278  
TMK: 1-1-2-004-065-0000

This is a rare opportunity to acquire a fee simple, stand-alone, high-cube concrete warehouse with turnkey 2nd floor offices and secured, gated parking. The high-cube portion of the warehouse features 24-foot high ceilings, a 12' x 12' roll-up door, with its own restroom, and is fully outfitted with a fire sprinkler system. The heavy-duty 2nd floor mezzanine features 4 offices, a conference room, a kitchenette, 2 restrooms (one with a shower), a laundry room, and a large open workspace/reception area. The property is Tenant Occupied until mid/late 2027. Conveniently situated in Kalihi-kai, the property offers easy access to Nimitz Highway and the H-1 Freeway, and is just minutes from Downtown Honolulu, Daniel K. Inouye Airport, and Honolulu Harbor. Don't miss out on this prime fee simple opportunity!



Offered at **\$2,400,000** FS

Information deemed reliable but not guaranteed.



Listed by:  
**Garrett H. Kuroda**  
Realtor® | RB-23590  
808-722-7775  
garrett@lrghawaii.com

