



OFFICE CONDO FOR LEASE OR SALE

6412 SOUTH 900 EAST, MURRAY, UT 84121

LEASE RATE: \$18.00 PSF FS
SALE PRICE: \$825,000.00



PROPERTY INFORMATION

- ☑ Available: 3,384 Sq. Ft.
- ☑ Top Floor Office Suite
- ☑ Signage Available
- ☑ Parcel Size: 0.65 Acres
- ☑ Zoning: CC
- ☑ Tons Of Extra Storage
- ☑ Year Built: 2007
- ☑ Strong Traffic Counts Along 900 East
- ☑ Established Retail & Residential Trade Area
- ☑ Across From Wheeler Farm
- ☑ Six (6) Private Offices
- ☑ Private Bathroom
- ☑ Break Room
- ☑ Private Entrance

CONTACT US

CHRIS LORENZON

✉ chris@cresutah.com

☎ 801.652.2798

🌐 www.cresutah.com

Call Us 
801.876.6070



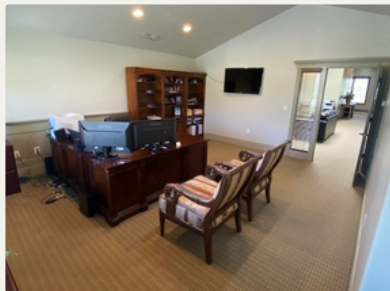
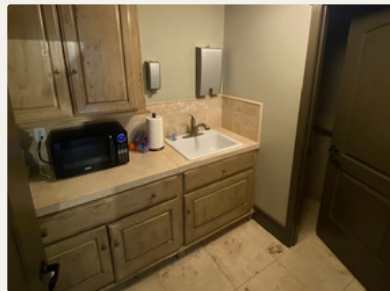
OFFICE CONDO FOR LEASE OR SALE

6412 SOUTH 900 EAST, MURRAY, UT 84121



SITE

WHEELER FARM



This information is given with the understanding that all negotiations and/or real estate activity related to the property described above shall be conducted through this CRES office. The above information while not guaranteed, was obtained from sources we believe to be reliable.

CONTACT US

Call Us
801.876.6070

CHRIS LORENZON

chris@cresutah.com

801.652.2798

www.cresutah.com