

# 2000 WEST LOOP SOUTH



CAPITAL  
COMMERCIAL  
INVESTMENTS, INC

 TRANSWESTERN REAL ESTATE SERVICES



# 2000 WEST LOOP SOUTH

**PRIME 22-STORY OFFICE BUILDING  
LOCATED IN ONE OF THE WORLD'S  
MOST PRESTIGIOUS BUSINESS  
DISTRICTS**

Exceptional Visibility

Unparalleled Ingress and Egress Along 610

Numerous Walkable Restaurants and Hotels

Ideal Access + Prominent Location

Spec Suites Available on Levels 12 & 13

Coffee Bar in the Lobby

Fitness Center with Locker Rooms and Showers

On-site Dining

On-site Property Management

24-hour Security

# Building Features

AT 2000 WEST LOOP SOUTH





# Prime Location

THE PROJECT IS LOCATED WITHIN **LESS THAN 1 MILE** OF HOUSTON'S BEST RESTAURANT DISTRICTS



2000  
WEST LOOP SOUTH

1 MILE RADIUS

Starbucks  
McCormick & Schmick's SEAFOOD & STEAKS  
FLOWER CHILD  
THE RUSTIC  
etoile cuisine et bar  
MENDOCINO FARMS  
songkran thai kitchen

MASTRO'S STEAKHOUSE  
LOCAL Foods  
WILLIE G'S SEAFOOD & STEAKS  
Bloom & BEE  
Liberty Kitchen & OYSTERETTE  
H BAR  
CRAFT F&B

WHOLE FOODS MARKET  
NORTH ITALIA  
Ninfa's MEXICAN RESTAURANT  
rise  
La Table  
THE ANNIE CAFE & BAR  
SOZO sushi & lounge

Steak 48  
Le Colonial  
Ouzo Bay  
TOULOUSE  
THE TUCK ROOM  
hopdoddy BURGER BAR  
MAD  
LOCH BAR

Drexel House EATERY & WINE BAR  
P.F. CHANG'S ASIAN TABLE  
Sushi-Bar-Restaurant  
ESCALANTE'S FINE TEX-MEX & TEQUILA  
Sprinkles  
SWEET PARIS crêperie & wine

WOODWAY DR

S POST OAK LN

N POST OAK LN

610

MEMORIAL PARK

UPTOWN PARK

POST OAK

BLVD PLACE

SAN FELIPE

CHIMNEY ROCK RD

HIGHLAND VILLAGE

RIVER OAKS DISTRICT

WESTHEIMER RD

POST OAK BLVD

WILLOW ROCK

# Great Access

AT THE CENTER OF IT ALL



## EXPLORE THE NEIGHBORHOOD

just minutes away

With retail, dining, residential and office so close, you'll never want to leave.

**2**  
minute drive to  
BLVD PLACE

**3**  
minute drive to  
THE GALLERIA

**5**  
minute drive to  
UPTOWN PARK

**5**  
minute drive to  
RIVER OAKS  
DISTRICT

**5**  
minute drive to  
MEMORIAL  
PARK





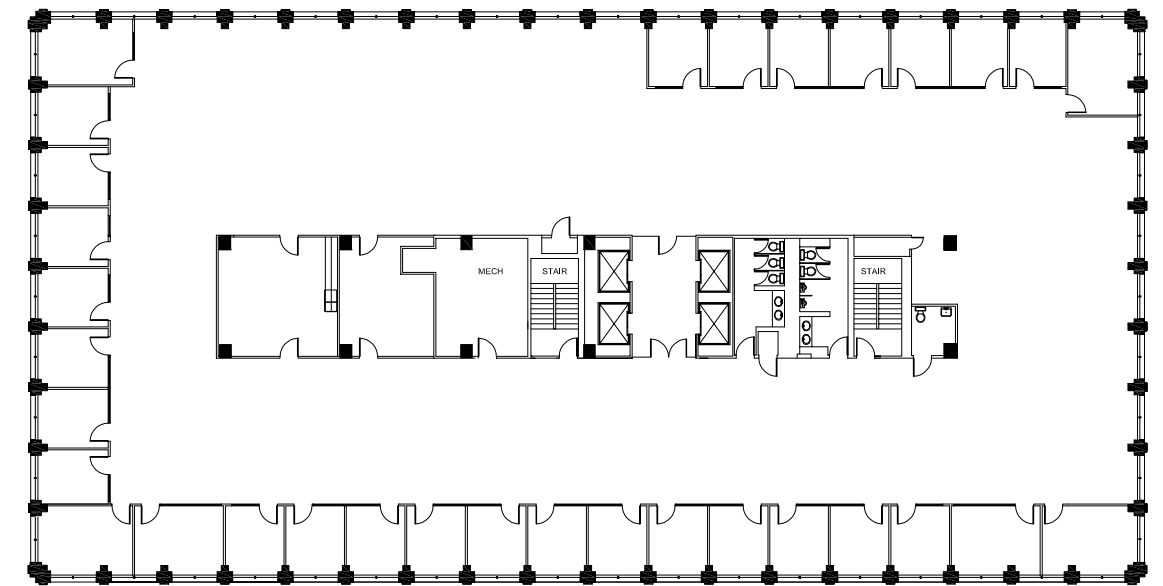
# Available Space



•	Suite 2100	3,352 SF
•	Suite 2150	10,738 SF
•	Suite 2021	2,509 SF
•	Suite 2010	7,430 SF
•	Suite 1900	16,809 SF
•	Suite 1800	1,352 SF
•	Suite 1700	17,421 SF
•	Suite 1600	17,046 SF
•	Suite 1500	3,543 SF
•	Suite 1400	16,377 SF
•	Suite 1300	9,622 SF
•	Suite 1200	7,332 SF
•	Suite 1100	7,689 SF
•	Suite 900	16,691 SF
•	Suite 800	16,691 SF
•	Suite 700	16,687 SF
•	Suite 600	16,801 SF
•	Suite 500	16,832 SF
•	Suite 430	3,521 SF
•	Suite 400	12,720 SF
•	Suite 300	16,823 SF

## TYPICAL FLOOR PLAN

- » Efficient Rectangular Floor Plate
- » 16,800 Rentable Square Feet







## FOR LEASING INFORMATION

PARKER BURKETT  
713.407.8716  
[parker.burkett@transwestern.com](mailto:parker.burkett@transwestern.com)