

5 Eldridge Street

Between Canal Street & Division Street

corcoran

Retail & Office Space + Basement with street access

Available Immediately

515 ft ² - 1100 ft ²	Retail Storefronts Contiguous in the back
340 ft ² - 850 ft ²	Office spaces
520 ft ² - 720 ft ²	Basement with direct street access Contiguous to Storefront South

All Uses Considered

Nearby Trains **B** **D** **F** **M** **J** **Z** **N** **Q** **R** **4** **6**



Contact Exclusive broker:

Ilya Kulichkin

347.359.5812

ikulichkin@corcoran.com

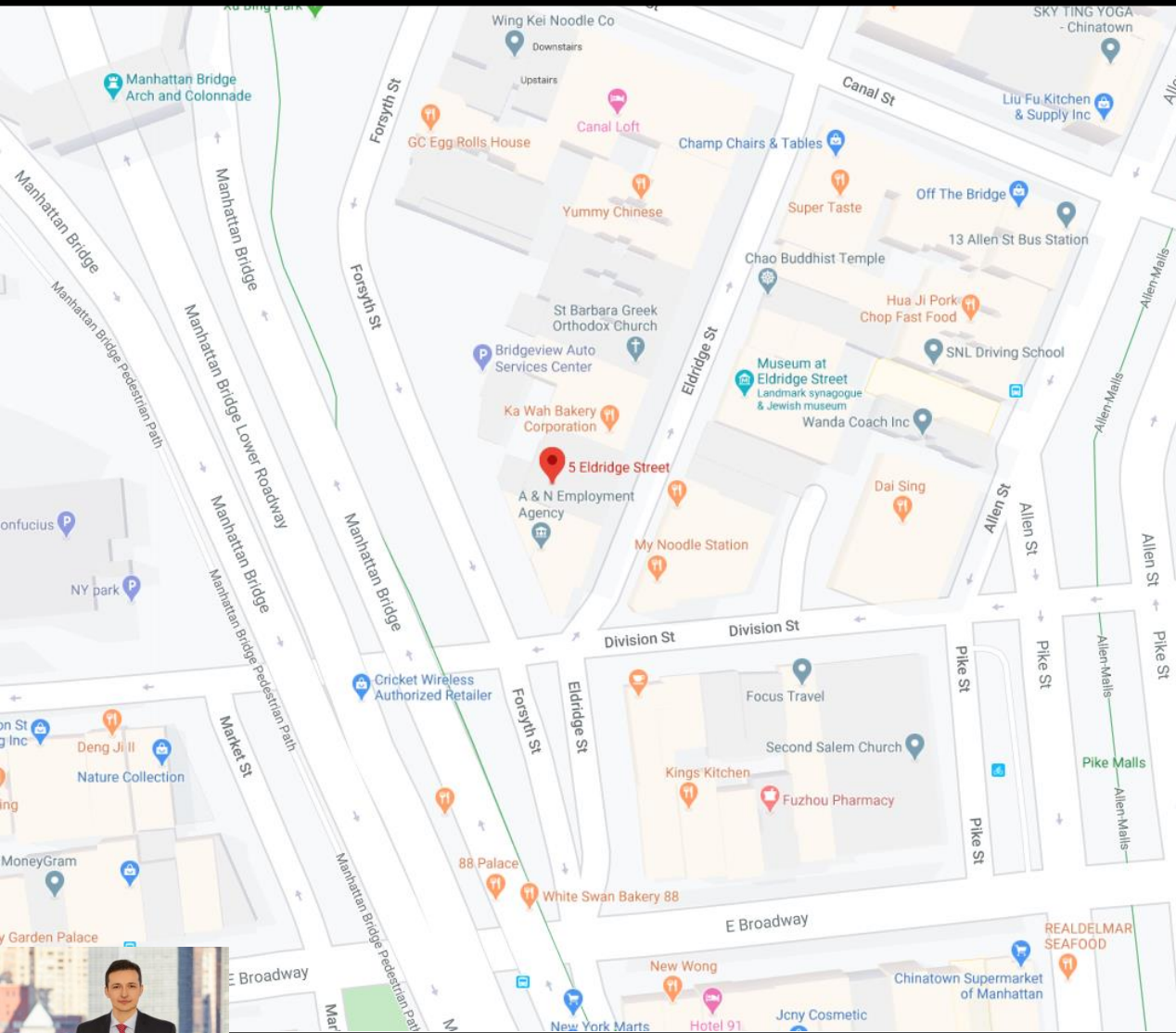
All information supplied is from sources deemed reliable and is furnished subject to errors, omissions, modifications, removal of the listing for sale or lease, and to any listing conditions, including the rates and manner of payment of commissions for particular offerings imposed by principals or agreed by this Company, the terms of which are available to principals or duly licensed brokers. Any square footage dimensions set forth are approximate.



5 Eldridge Street

Between Canal Street & Division Street

corcoran



Highlights:

- Prime location
- Right by busy intersection
- Heavy foot traffic
- 24/7 Access
- Private bathroom in each space
- Flexible terms

Neighbors:

- Canal Loft Hotel
- Hotel Mimosa
- CoCo Fresh Tea & Juice
- Super Taste Chinese Restaurant
- Two Bridge's Diner
- Fong On Tofu shop
- Hong Man Chinese Restaurant
- Ka Wah Bakery
- Yi Zhang Fishball
- My Food House
- My Noodle Station
- Yummy Chinese
- A-Spa
- Comfort Zone Eldridge Gaming Café
- Green Forest Internet Café
- Bao Ying Hair Salon
- Golden Star Pharmacy
- 388 Café & Deli
- Ah Yan Fashion
- Rong City Fish Ball
- Siman Spa
- Moge Tee

Contact Exclusive broker:

Ilya Kulichkin

347.359.5812

ikulichkin@corcoran.com

All information supplied is from sources deemed reliable and is furnished subject to errors, omissions, modifications, removal of the listing for sale or lease, and to any listing conditions, including the rates and manner of payment of commissions for particular offerings imposed by principals or agreed by this Company, the terms of which are available to principals or duly licensed brokers. Any square footage dimensions set forth are approximate.



5 Eldridge Street

Between Canal Street & Division Street

corcoran

Ground floor Retail

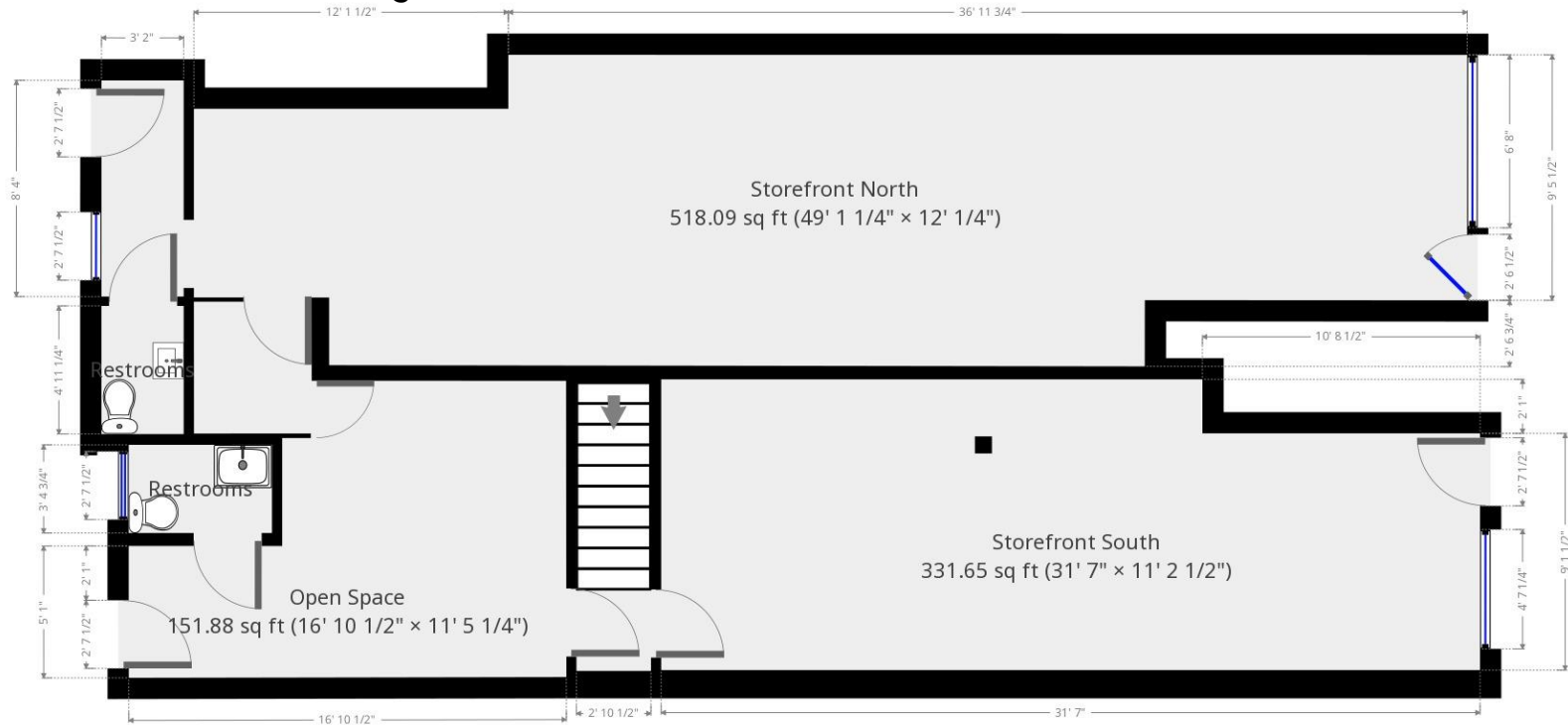
Total Available Space: 1100 ft²

Contiguous to 720 ft² Basement through Storefront South

Storefront North: 585 ft²

Storefront South: 515 ft²

Ceiling height: 7' 3"



Eldridge street

THIS FLOORPLAN IS PROVIDED WITHOUT WARRANTY OF ANY KIND. CORCORAN DISCLAIMS ANY WARRANTY INCLUDING, WITHOUT LIMITATION, SATISFACTORY QUALITY OR ACCURACY OF DIMENSIONS.

View 3D Floorplan: <https://cloud.magic-plan.com/plan/eca18cc2-373f-4428-ab77-6248e372547d#/3D/5e7120c3.0e16f7ff>

Contact Exclusive broker:

Ilya Kulichkin

347.359.5812

ikulichkin@corcoran.com

All information supplied is from sources deemed reliable and is furnished subject to errors, omissions, modifications, removal of the listing for sale or lease, and to any listing conditions, including the rates and manner of payment of commissions for particular offerings imposed by principals or agreed by this Company, the terms of which are available to principals or duly licensed brokers. Any square footage dimensions set forth are approximate.

magicplan

5 Eldridge Street

Between Canal Street & Division Street

corcoran

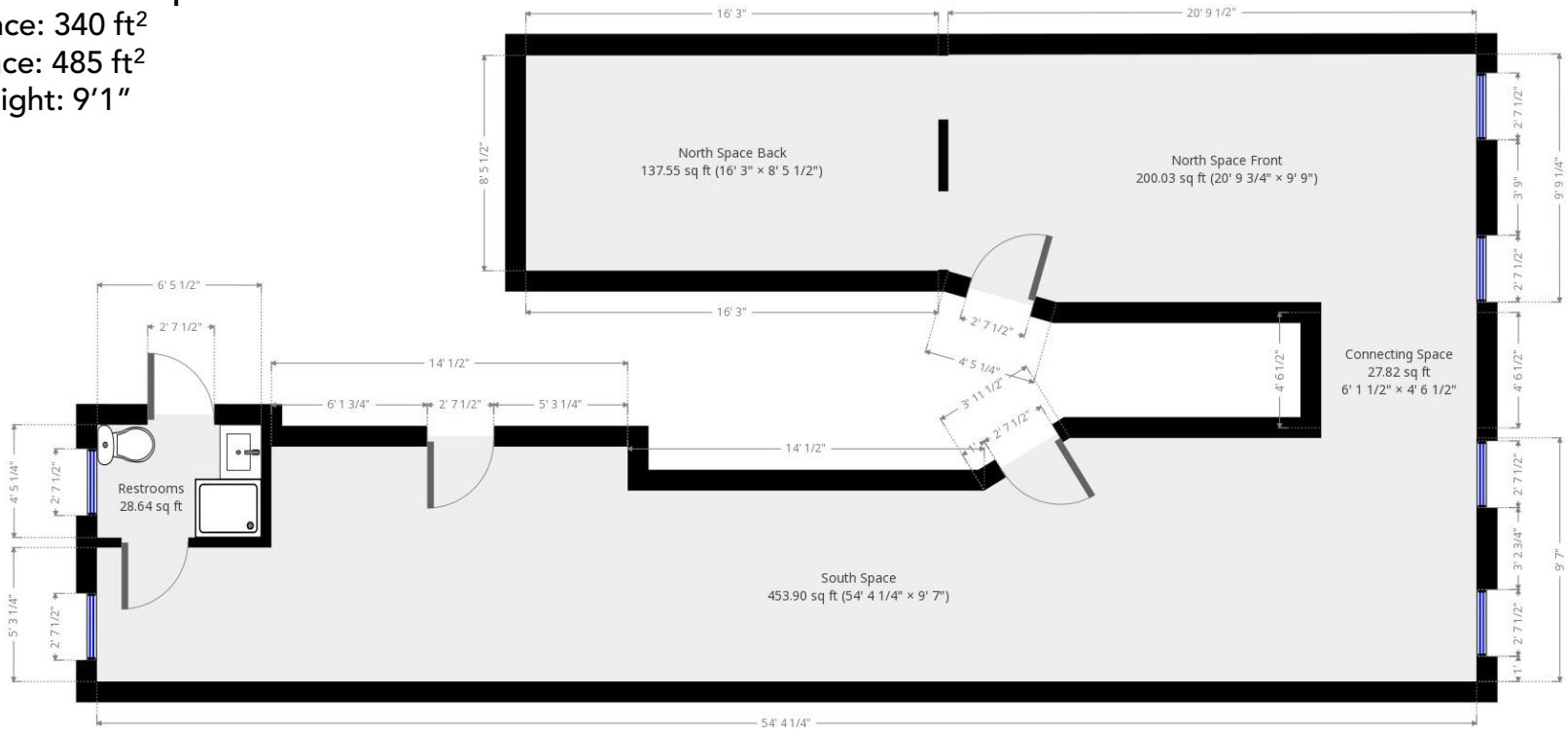
2nd floor Spaces

Total Available Space: 850 ft²

North Space: 340 ft²

South Space: 485 ft²

Ceiling height: 9'1"



THIS FLOORPLAN IS PROVIDED WITHOUT WARRANTY OF ANY KIND. CORCORAN DISCLAIMS ANY WARRANTY INCLUDING, WITHOUT LIMITATION, SATISFACTORY QUALITY OR ACCURACY OF DIMENSIONS.

View 3D Floorplan: <https://cloud.magic-plan.com/plan/eca18cc2-373f-4428-ab77-6248e372547d#/3D/5e713150.da69cfff>

Contact Exclusive broker:

Ilya Kulichkin

347.359.5812

ikulichkin@corcoran.com

All information supplied is from sources deemed reliable and is furnished subject to errors, omissions, modifications, removal of the listing for sale or lease, and to any listing conditions, including the rates and manner of payment of commissions for particular offerings imposed by principals or agreed by this Company, the terms of which are available to principals or duly licensed brokers. Any square footage dimensions set forth are approximate.



magicplan

5 Eldridge Street

Between Canal Street & Division Street

corcoran

Basement Space

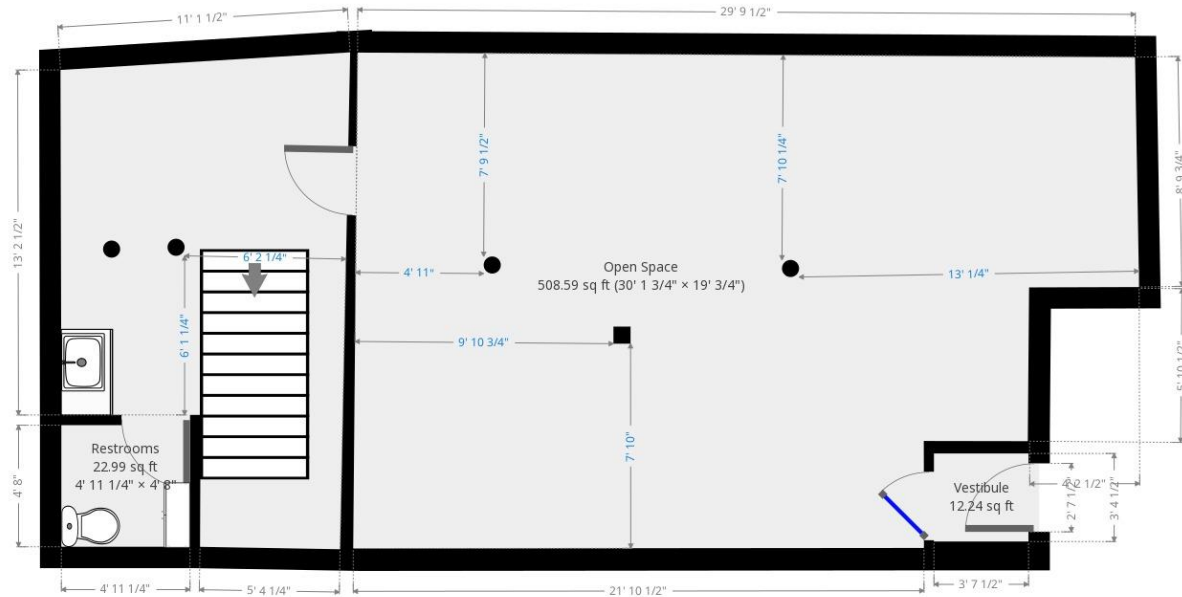
Total Available Space: 720 ft²

Ceiling height: 7' 6"

Can be rented as Open Space of 520 ft²

Or add a hallway for 720 ft²

Contiguous to Storefront South 515 – 1100 ft²



Eldridge street

THIS FLOORPLAN IS PROVIDED WITHOUT WARRANTY OF ANY KIND. CORCORAN DISCLAIMS ANY WARRANTY INCLUDING, WITHOUT LIMITATION, SATISFACTORY QUALITY OR ACCURACY OF DIMENSIONS.



View 3D Floorplan: <https://cloud.magic-plan.com/plan/eca18cc2-373f-4428-ab77-6248e372547d#/3D/5e710b8d.41877fff>

Contact Exclusive broker:

Ilya Kulichkin

347.359.5812

ikulichkin@corcoran.com

All information supplied is from sources deemed reliable and is furnished subject to errors, omissions, modifications, removal of the listing for sale or lease, and to any listing conditions, including the rates and manner of payment of commissions for particular offerings imposed by principals or agreed by this Company, the terms of which are available to principals or duly licensed brokers. Any square footage dimensions set forth are approximate.

