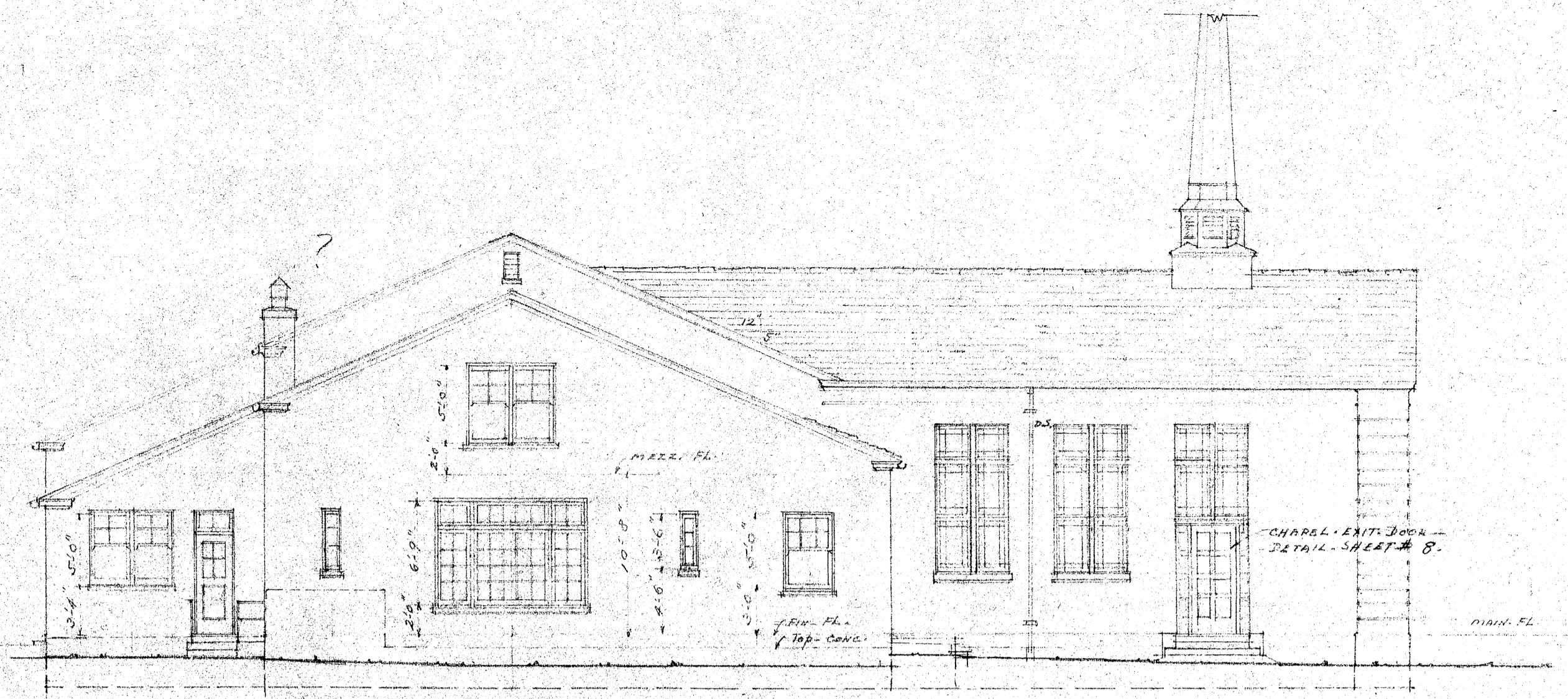
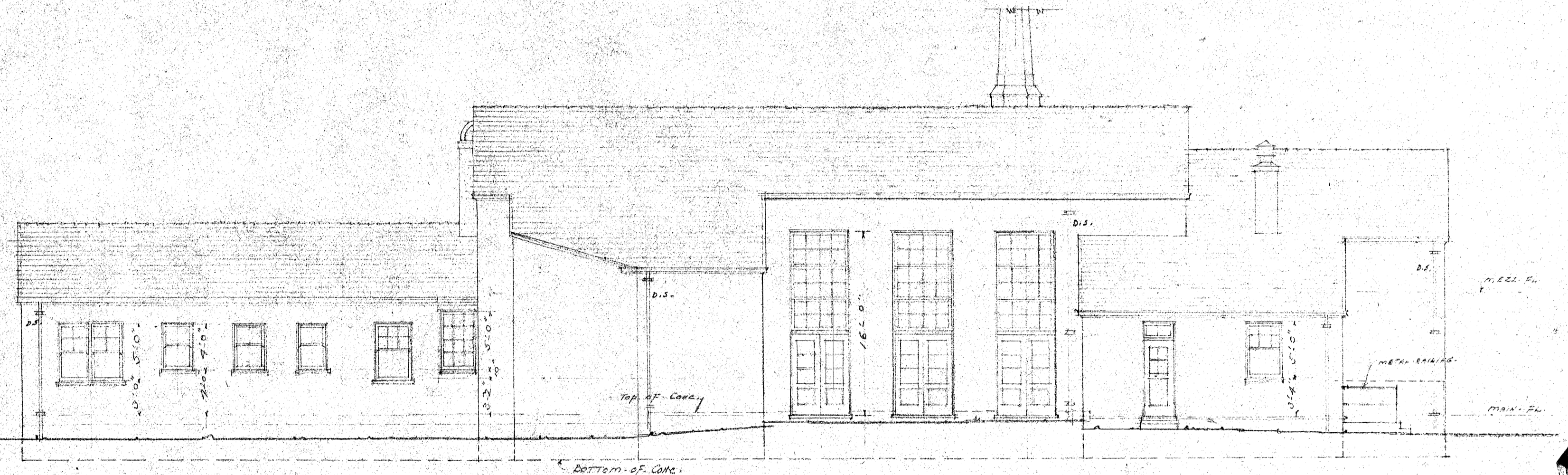


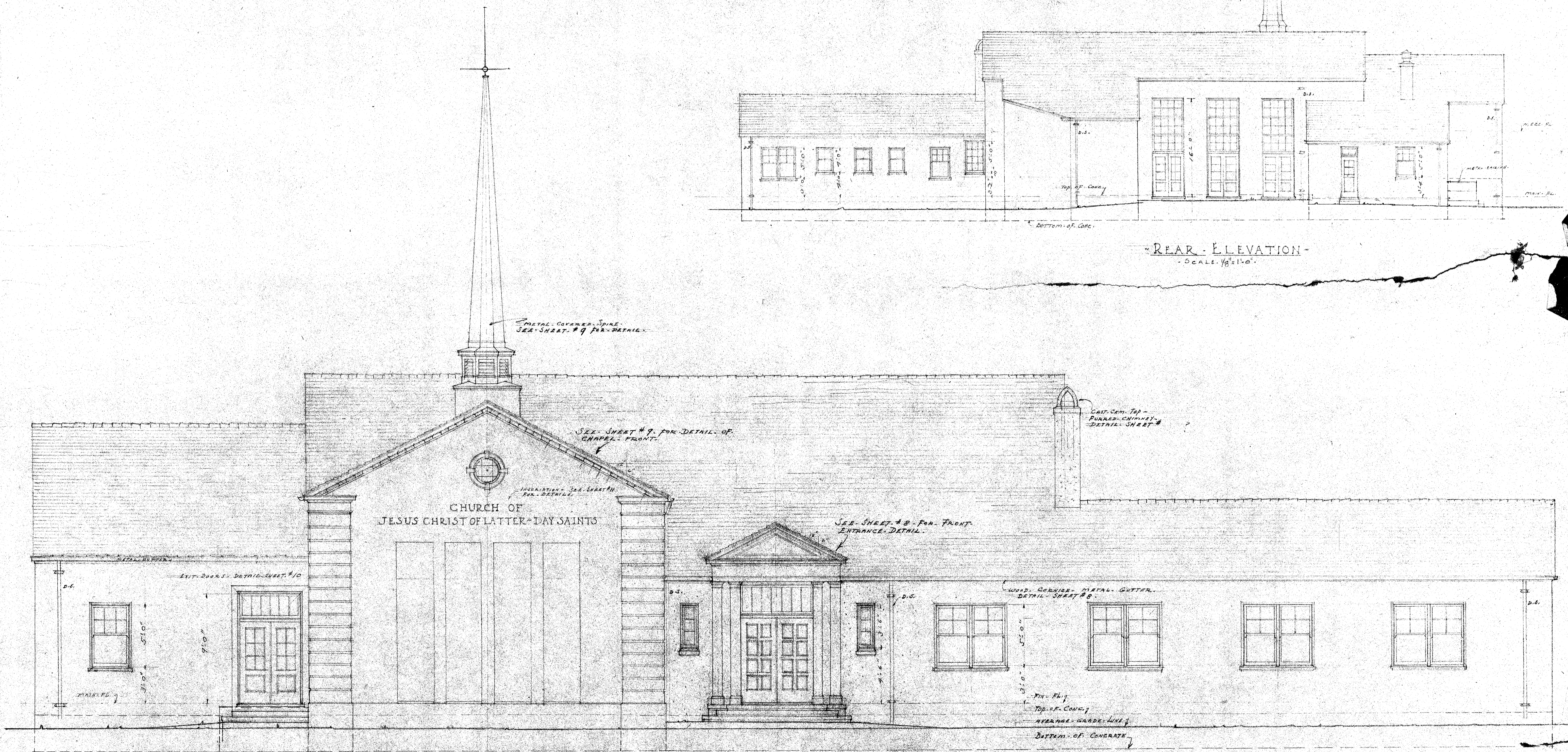
- EASTERLY END ELEVATION -
SCALE: 1/8" = 1'-0"



- WESTERLY END ELEVATION -
SCALE: 1/8" = 1'-0"



- REAR ELEVATION -
SCALE: 1/8" = 1'-0"



- FRONT ELEVATION -
SCALE: 1/4" = 1'-0"

DATE	CHURCH BUILDING FOR SANTA ROSA BRANCH	JOB NO 471
REVISED	NORTHERN CALIFORNIA MISSION CHURCH OF JESUS CHRIST OF LATTER-DAY SAINTS N.W. CORNER JOHNSON & BEAVER STS SANTA ROSA CALIFORNIA DR. THOS. C. EYENE DR. GERARD E. ELLSWORTH MISSION PRES.	SHEET NO A 1 A
DRAWN BY	THEO. G. RUEGG ARCHITECT. 617 MONTGOMERY ST. SAN FRANCISCO CALIF.	CERTIFICATE NO C-134

*cutters
see sheet
cellar under
main floor*