

Welcome Home



7733 GIRARD AVE, LA JOLLA, 92037

LOT #13 | 3,493 Approx. Sq. Ft.



Tami Fuller Presents

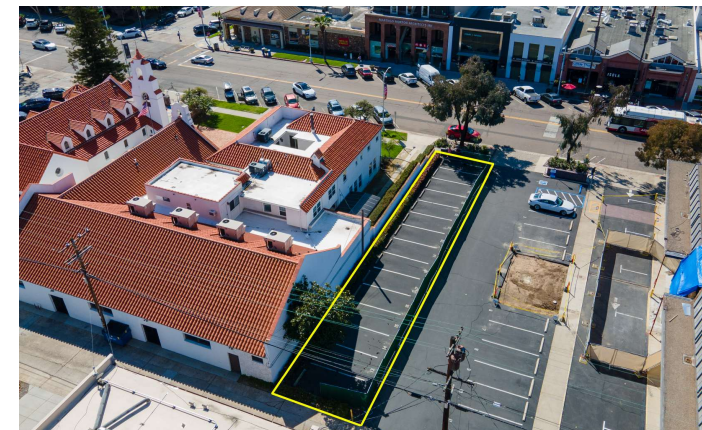
7733 GIRARD AVE, LA JOLLA, 92037





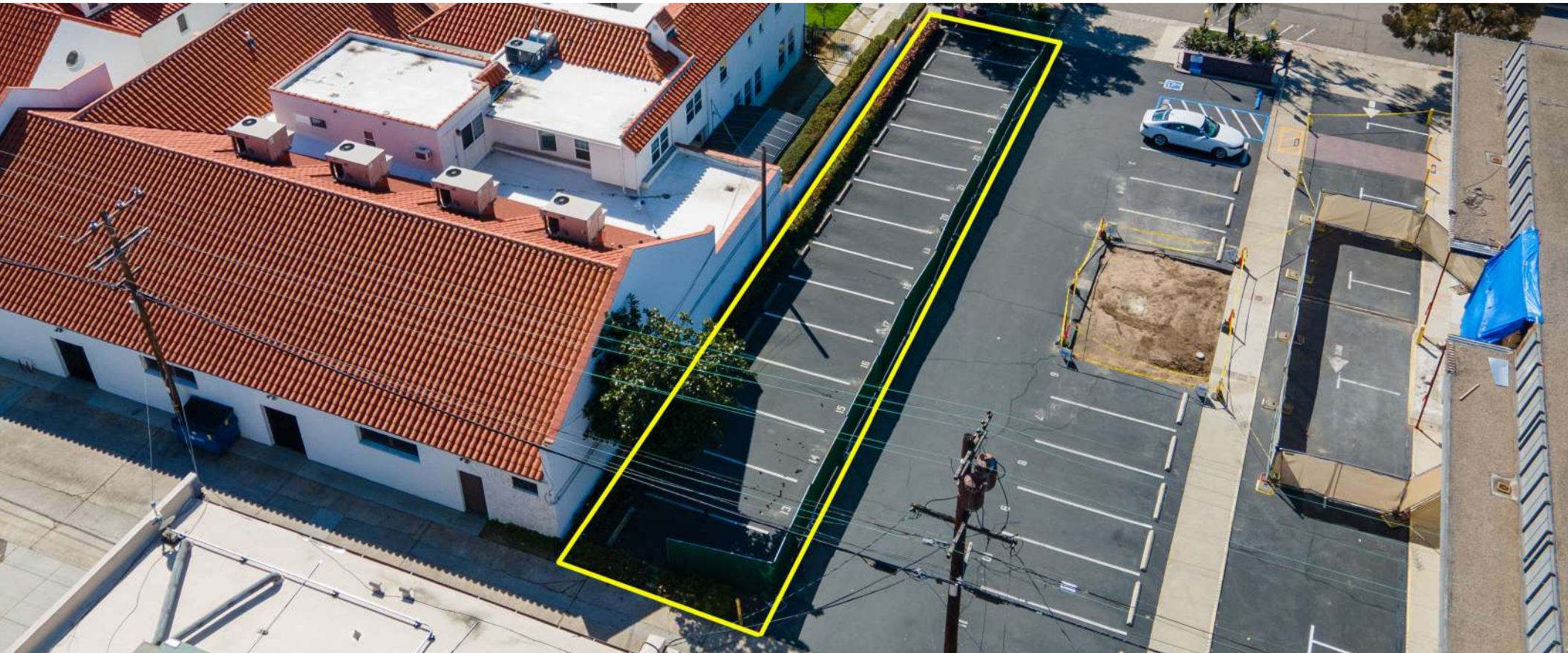
LOT IN THE HEART OF LA JOLLA VILLAGE

Nestled within the vibrant La Jolla Village, this remarkable property stands as a testament to longevity and heritage, as it has remained under the ownership of the same family since 1943. With its coveted location on Girard Avenue, between Kline and Silverado, this 3,493 Sq. Ft Lot represents a unique & enduring investment opportunity. Formerly a part of a bank parking lot, this meticulously maintained parcel offers a flat, paved surface and convenient alley access, providing an ideal foundation for various ventures such as redevelopment, retail, or mixed-use development projects. Explore the potential of this prime location within one of San Diego's prime shopping areas. Don't miss out on this attractively priced gem.



Tami Fuller Presents

7733 GIRARD AVE, LA JOLLA, 92037



Tami Fuller
BROKER ASSOCIATE

619-980-TAMI (8264)
Tami@TamiFuller.com
www.TamiFuller.com
DRE# 01000767

Scan the QR code for more property details

