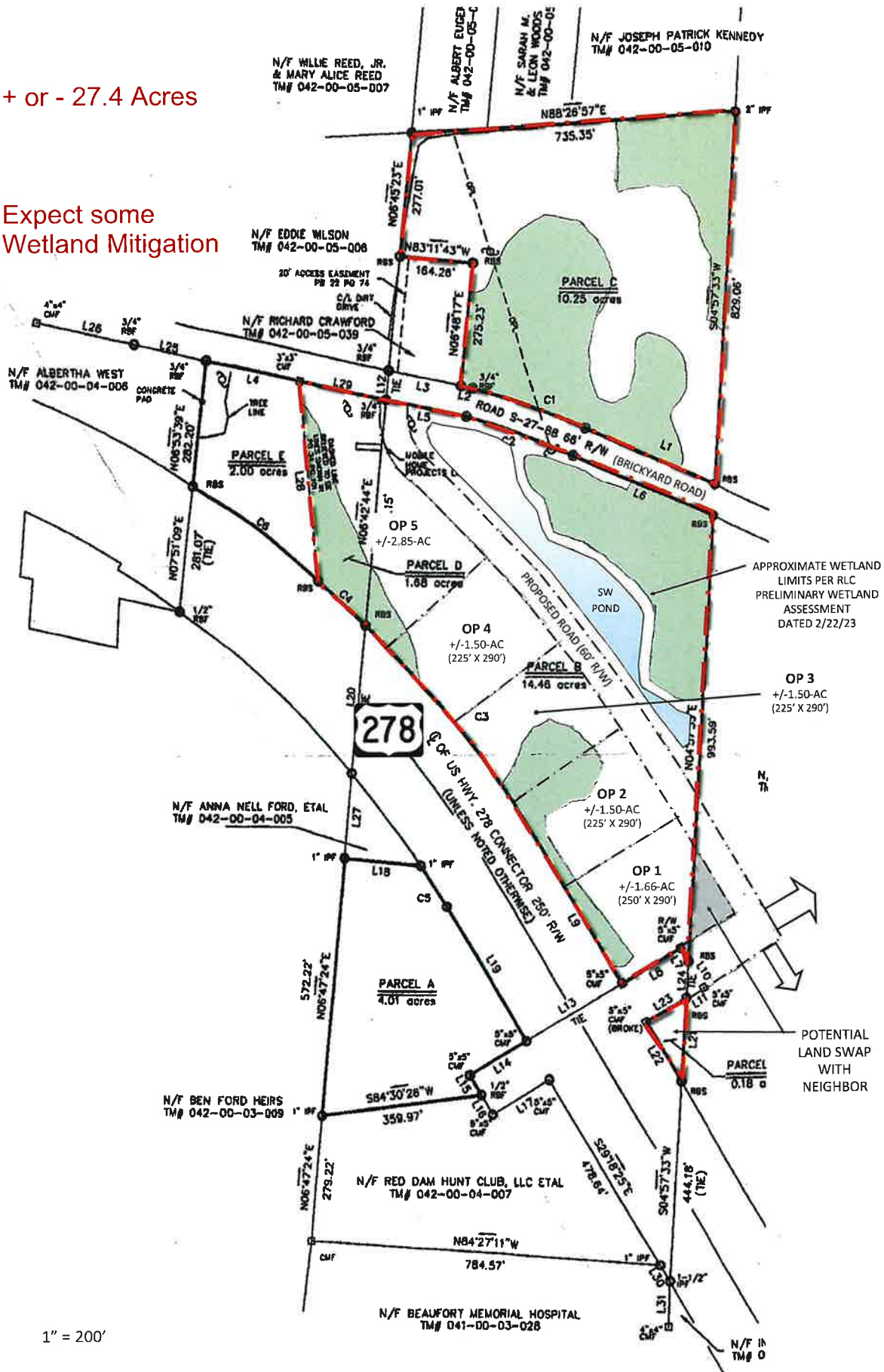


10.260-ACRES (1 PARCELS)
ZONED GENERAL COMMERCIAL

16.307-ACRES (3 PARCELS)
ZONED GENERAL COMMERCIAL

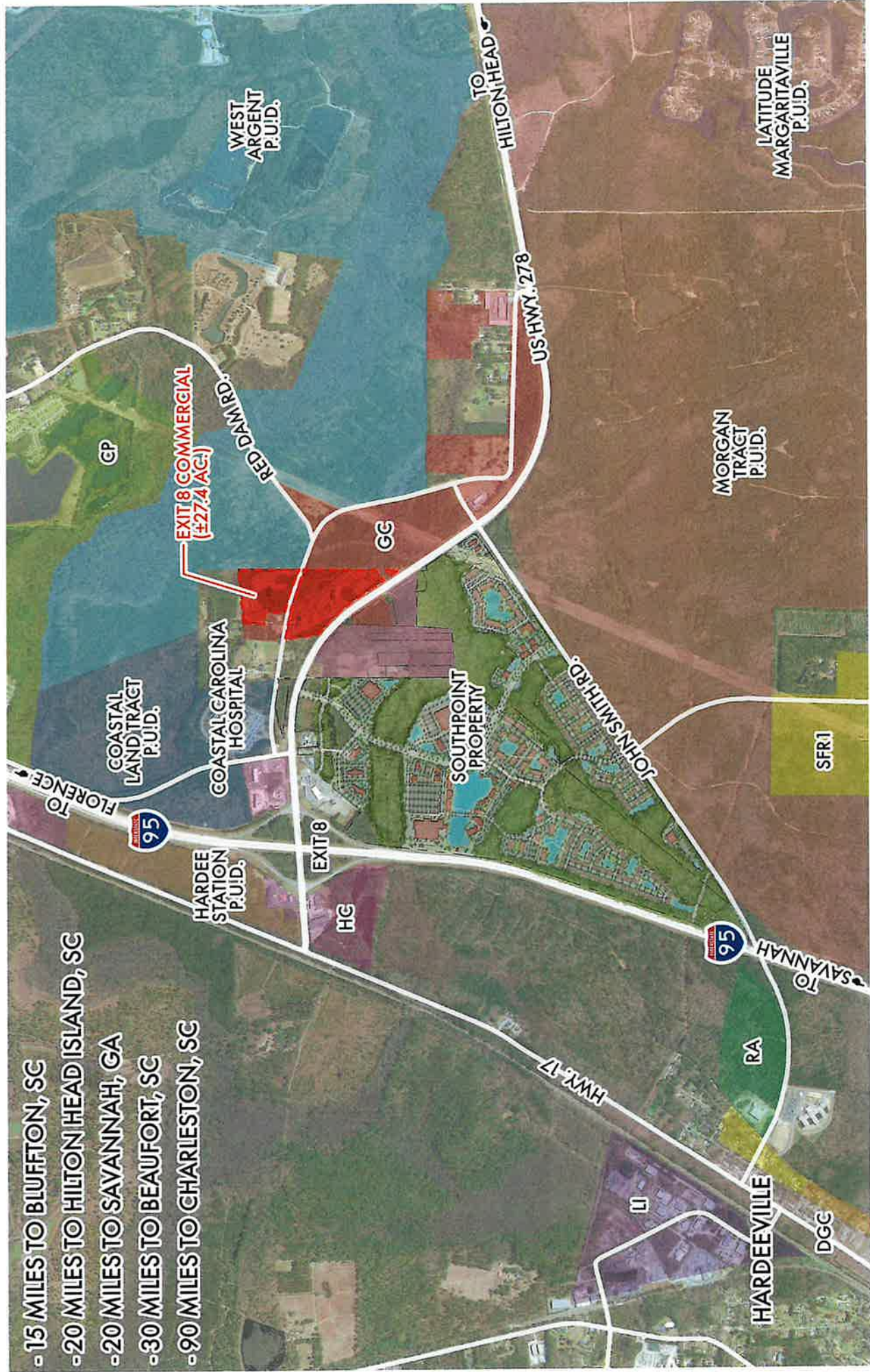
+ or - 27.4 Acres

Expect some
Wetland Mitigation



EXIT 8 COMMERCIAL

- 15 MILES TO BLUFFTON, SC
- 20 MILES TO HILTON HEAD ISLAND, SC
- 20 MILES TO SAVANNAH, GA
- 30 MILES TO BEAUFORT, SC
- 90 MILES TO CHARLESTON, SC



I95/Exit 8



- SDDOT Project: 10-mile corridor of I-95 from one mile into Georgia at the Savannah River to approximately mile marker 9 (just north of US 278) and to address operational deficiencies for interchanges and bridges within the corridor.



Exit 8 Development

D.O.T. Changes coming to Exit 8

Traffic light at McDonald's to be moved to within

900 ft. of subject + or - 27.4 acres