

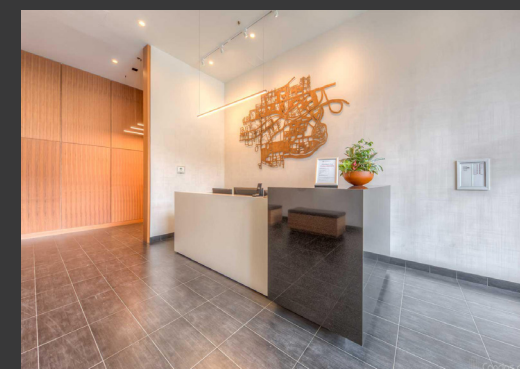
510 KING STREET E.

PRIME RETAIL OPPORTUNITY IN THE
HEART OF CORKTOWN



welcome to 510 KING STREET EAST

Located on King Street between Sumach and River Street, 510 King Street East is an intimate retail opportunity with a chic, high-modern vibe in one of Toronto's oldest neighbourhoods. With the building standing at eight-storeys, the retail unit sits below 192 Toronto condos for sale and for rent. Ideal opportunity for businesses seeking a stylish retail unit in one of Toronto's most vibrant communities filled with galleries, markets and cafés and just minutes from the downtown Toronto core. 510 King Street East has a great location right where King Street joins with Queen Street, creating a neighbourhood junction with access via TTC or on foot to many top Toronto areas including the Distillery District, Queen Street West, the Entertainment District, the St. Lawrence Market, and Leslieville.



welcome to

510 KING STREET EAST

For Lease - Details

Net Rent:	Negotiable
Additional Rent:	\$12.50 PSF (Est. 2022)
Occupancy:	Immediate
Term:	5-10 years
Ground Floor:	1,786 SF

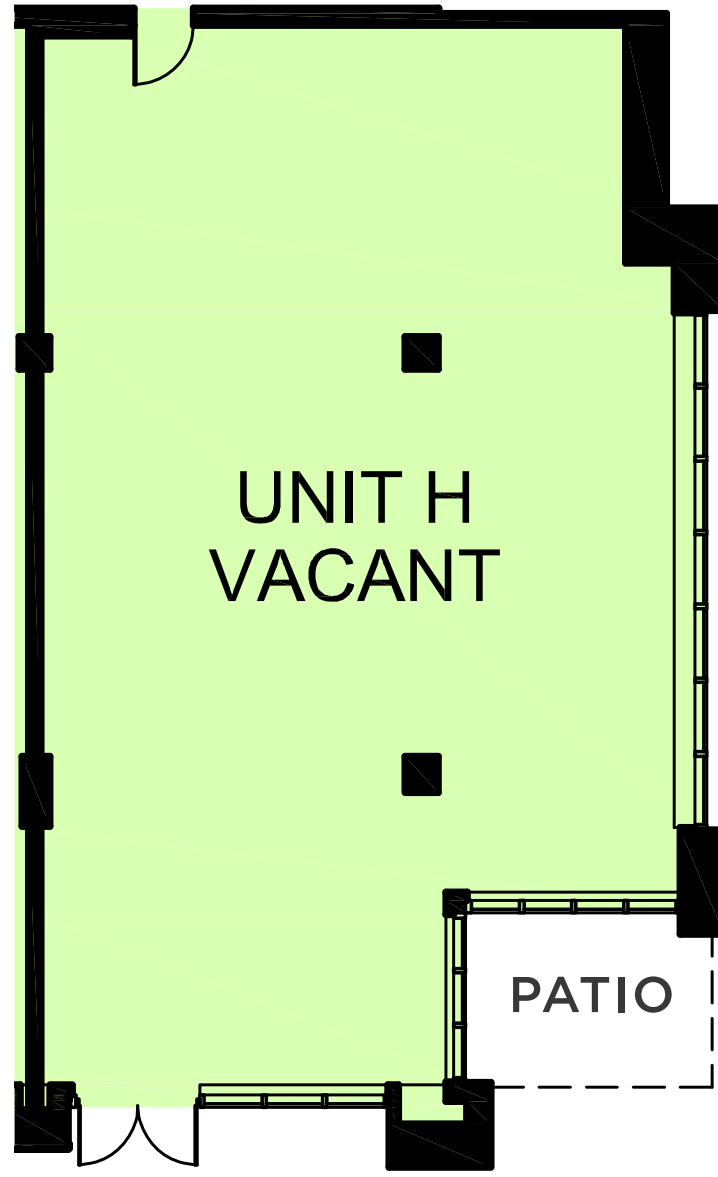
Highlights

- Beautifully fixtured cafe space with exceptional ceiling heights, natural light and minimal columns
- Intimate exterior patio
- Great natural light with exposure on King Street East
- Trendy neighbourhood and peaceful residential area
- Steps from Distillery District, Queen Street West, the Entertainment District, the St. Lawrence Market, and Leslieville
- World class transportation. Located steps away from the 504 King streetcar
- Neighbouring retailers include Impact Kitchen, Wine Rack, Subway, North Medical Spa, Lift Fitness, Tim Hortons and Gears Bike Repair



510 King Street East

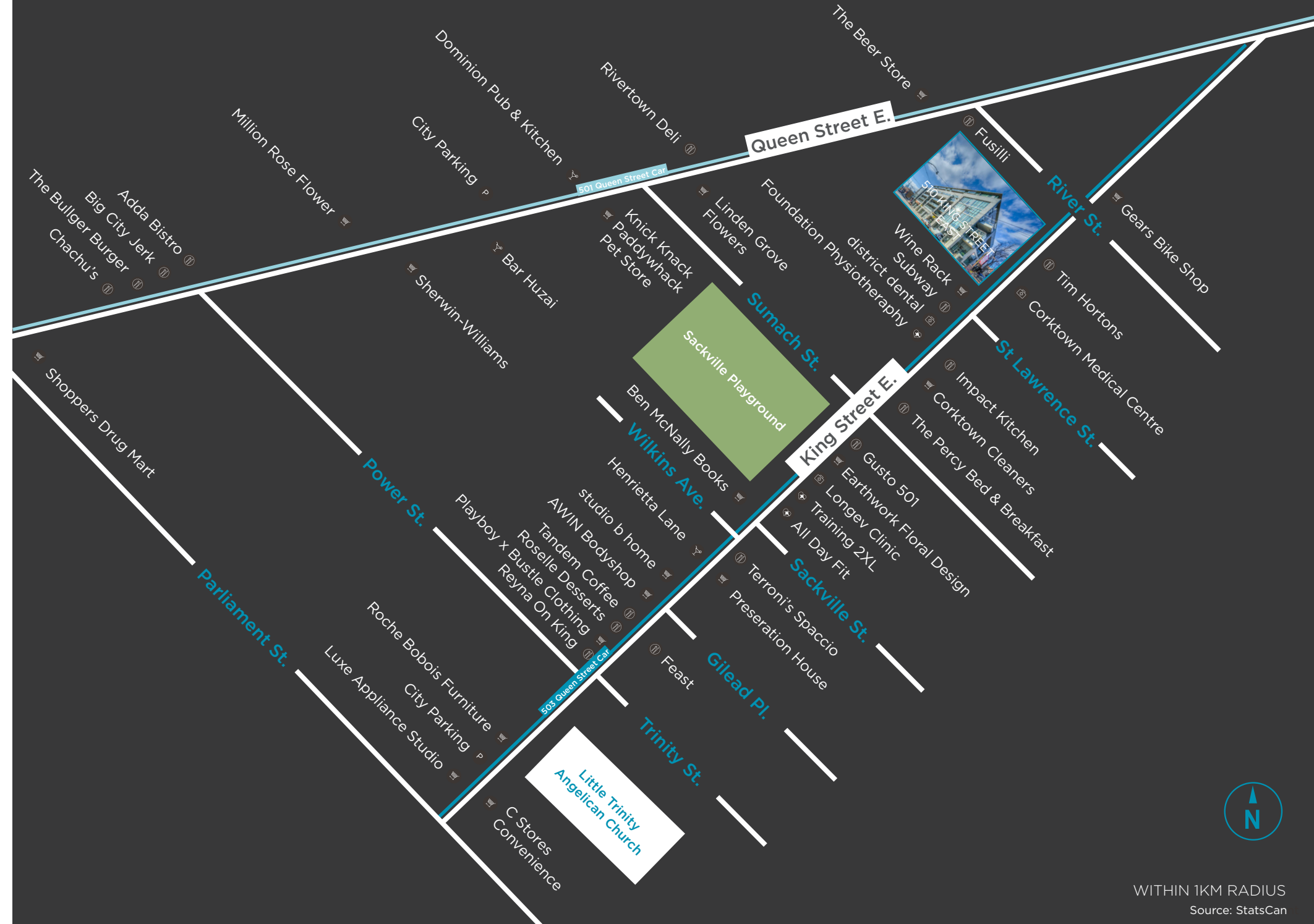
GROUND FLOOR - 1,786 SF



KING STREET



AREA RETAILERS



INTERIOR PHOTOS



161 Bay Street, Suite 1500
Toronto, ON M5J 2S1 | Canada

LEASING ENQUIRIES

Carmen Siegel*
Senior Associate
Retail Services
+1 416 359 2365
carmen.siegel@cushwake.com

Cam Stajer*
Associate
Retail Services
+1 416 359 2712
cam.stajer@cushwake.com



©2022 Cushman & Wakefield ULC. All rights reserved. The information contained in this communication is strictly confidential. This information has been obtained from sources believed to be reliable but has not been verified. NO WARRANTY OR REPRESENTATION, EXPRESS OR IMPLIED, IS MADE AS TO THE CONDITION OF THE PROPERTY (OR PROPERTIES) REFERENCED HEREIN OR AS TO THE ACCURACY OR COMPLETENESS OF THE INFORMATION CONTAINED HEREIN, AND SAME IS SUBMITTED SUBJECT TO ERRORS, OMISSIONS, CHANGE OF PRICE, RENTAL OR OTHER CONDITIONS, WITHDRAWAL WITHOUT NOTICE, AND TO ANY SPECIAL LISTING CONDITIONS IMPOSED BY THE PROPERTY OWNER(S). ANY PROJECTIONS, OPINIONS OR ESTIMATES ARE SUBJECT TO UNCERTAINTY AND DO NOT SIGNIFY CURRENT OR FUTURE PROPERTY PERFORMANCE. *Sales Representative