

TOM WILLIAMS DR. OFFICE

1644 TOM WILLIAMS DR. S., FARGO, ND 58104


GOLDMARK™
COMMERCIAL REAL ESTATE INC

FOR LEASE



TURN KEY OFFICE SPACE FOR LEASE IN SOUTH FARGO!

Space Available: 1,866 SF

Gross Rent: \$17.00 PSF | \$2,643.50/mo

NO CAM

Tenant Expenses: Gas/Electricity, Janitorial, Phone/Internet

Andy Westby, SIOR | 701.239.5839

andy.westby@goldmark.com

Goldmark Commercial Real Estate

www.goldmarkcommercial.com

TOM WILLIAMS DR. OFFICE

1644 TOM WILLIAMS DR. S., FARGO, ND 58104

GOLDMARK
COMMERCIAL REAL ESTATE INC

SPACE AVAILABLE

1,866 SF

GROSS RENT

\$17.00 PSF
\$2,643.50/month

TENANT EXPENSES

Gas/Electricity
Phone/Internet
Janitorial

LANDLORD EXPENSES

Taxes/Specials
Snow/Lawn
Water/Sewer/Garbage
Building & Common Area Maint.

NEIGHBORS

Active Minds Academy
O'Reilly Auto Parts
Pinnacle Communications
Hornbachers

PROPERTY DESCRIPTION:

Great small office space at an extremely affordable gross rent rate, available for lease! Excellent location just off 32nd Ave S on Tom Williams Drive, two blocks from University Dr S. This suite on the east-end of the building has multiple offices, an open working area, kitchenette with sink, IT/storage room and a front waiting/reception area. Low monthly rent with NO CAM and ample front-door parking! Do not miss out on this great, turn-key office space!

FEATURES:

- NO CAM!
- Great South Fargo location
- Up to 6 offices and open work area
- Ample front-door parking

This information has been secured from sources we believe to be reliable, but we make no representation or warranties, expressed or implied, as to the accuracy of the information. Interested parties should conduct their own independent investigations and rely only on those results.

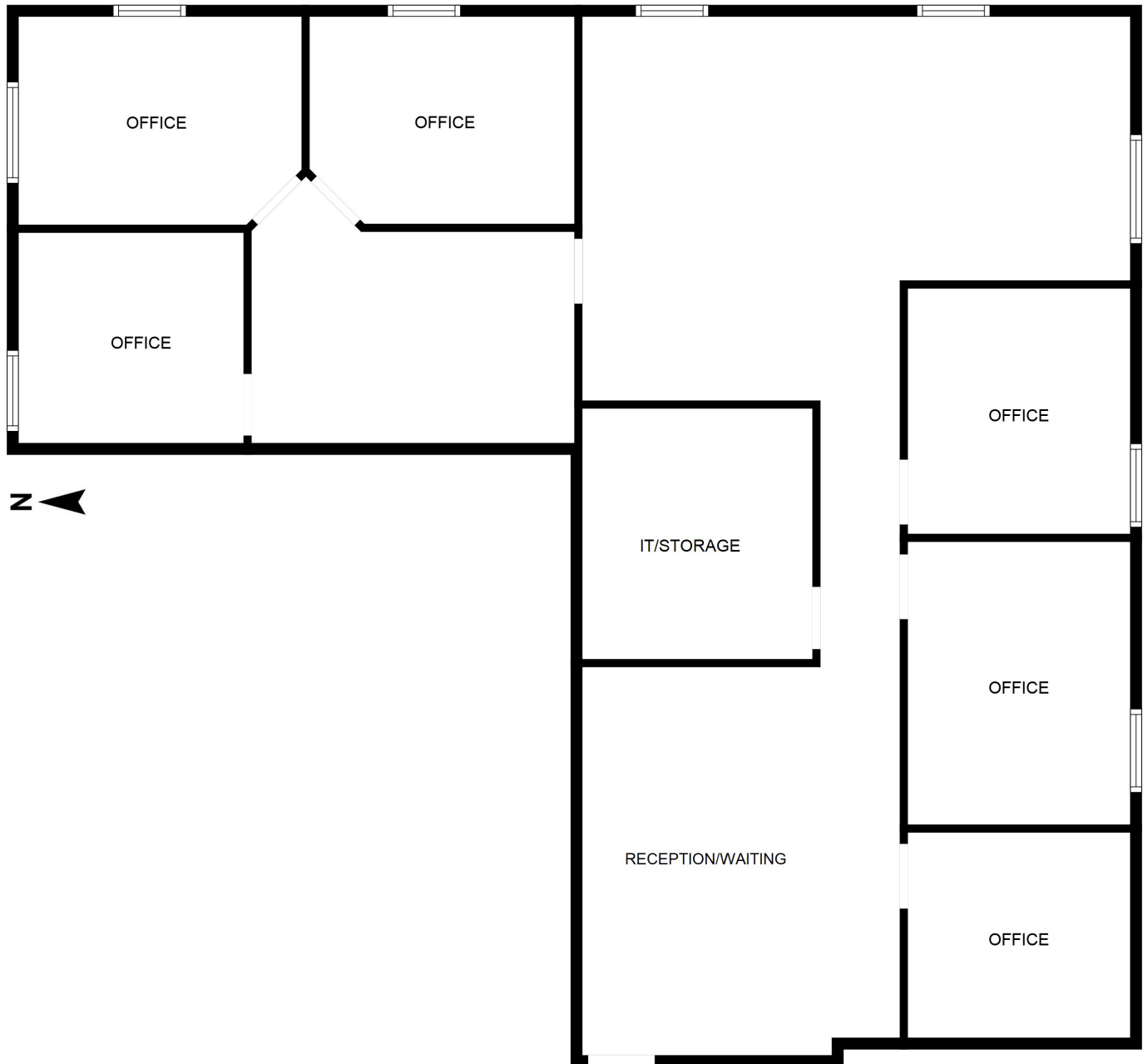


TOM WILLIAMS DR. OFFICE

1644 TOM WILLIAMS DR. S., FARGO, ND 58104



FLOORPLAN



TOM WILLIAMS DR. OFFICE

1644 TOM WILLIAMS DR. S., FARGO, ND 58104

GOLDMARK™
COMMERCIAL REAL ESTATE INC

