



# +/- 14,963 SF Industrial Building for Sale

720-730 NORTH EDGEWOOD AVENUE  
WOOD DALE, IL 60191

## SALE PRICE

\$2,130,000

## ACRES

+/- 0.82 Acres

## OFFICE SIZE

1,020 SF (in each unit)

## ZONING

I-1 (Industrial)

## PROPERTY HIGHLIGHTS

- Two Unit Building - 10,000 SF & 4,963 SF
- Ceiling Height: 15'9"
- 2 Exterior Docks / 2 Drive-In-Doors (14'x12')
- Power: 400A 240/120V 3PH
- Parking: +/- 21 Cars
- Year Built: 1981
- Heating: Gas

*For more information, please contact:*

### Thomas Gath

Managing Director

t 773-957-1415

thomas.gath@nmrk.com

8750 W Bryn Mawr Ave Suite 350  
Chicago, IL 60631



nmrk.com

# NEWMARK

Licensed in Illinois as Newmark Midwest Region, LLC

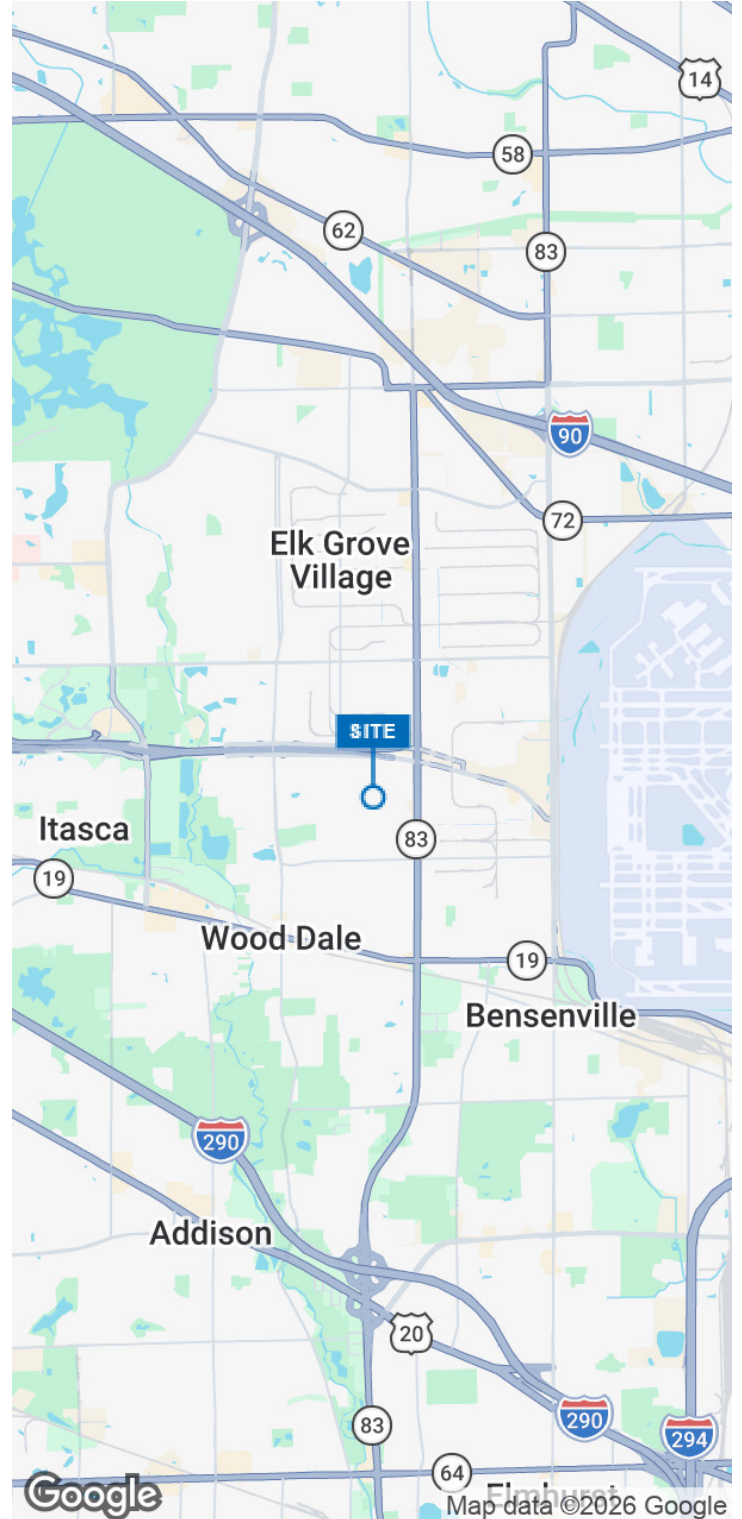
The information contained herein has been obtained from sources deemed reliable but has not been verified and no guarantee, warranty or representation, either express or implied, is made with respect to such information. Terms of sale or lease and availability are subject to change or withdrawal without notice.

720-730 NORTH EDGEWOOD AVENUE, WOOD DALE, IL 60191



#### ADDITIONAL PROPERTY HIGHLIGHTS

- Masonry construction
- Well maintained
- Low DuPage County Taxes - \$2.68 PSF
- Close to O'Hare Airport and I-390 (Elgin-O'Hare Tollway)
- East access to major expressways
- Column spacing 36'
- Two privates in each office area
- Locker room in warehouse



**Thomas Gath**

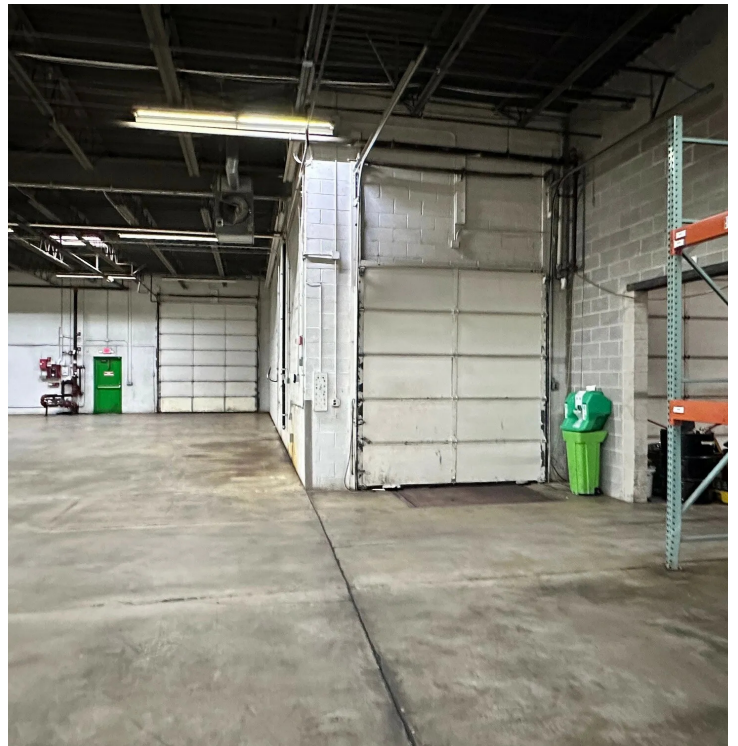
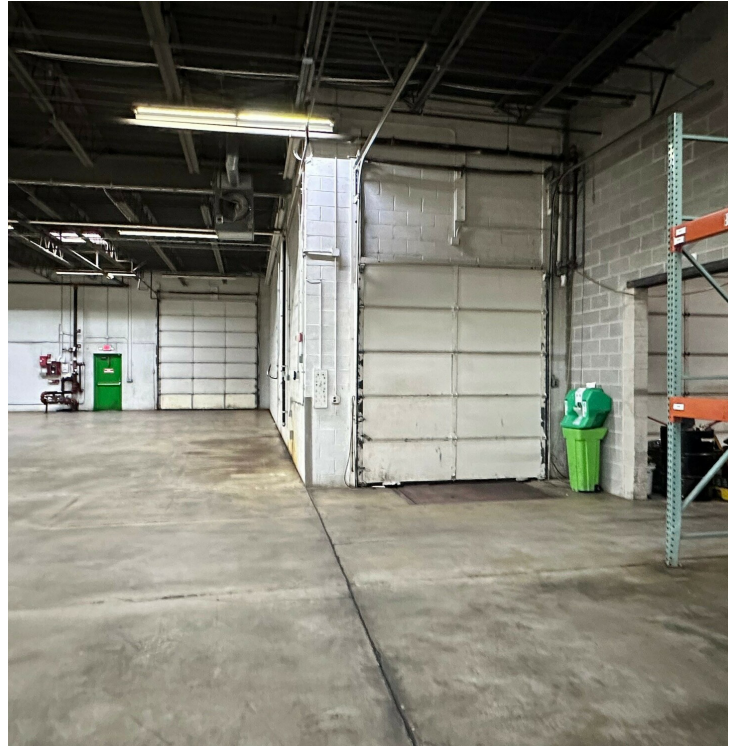
*Managing Director*

t 773-957-1415

thomas.gath@nmrk.com

**NEWMARK**

720-730 NORTH EDGEWOOD AVENUE, WOOD DALE, IL 60191



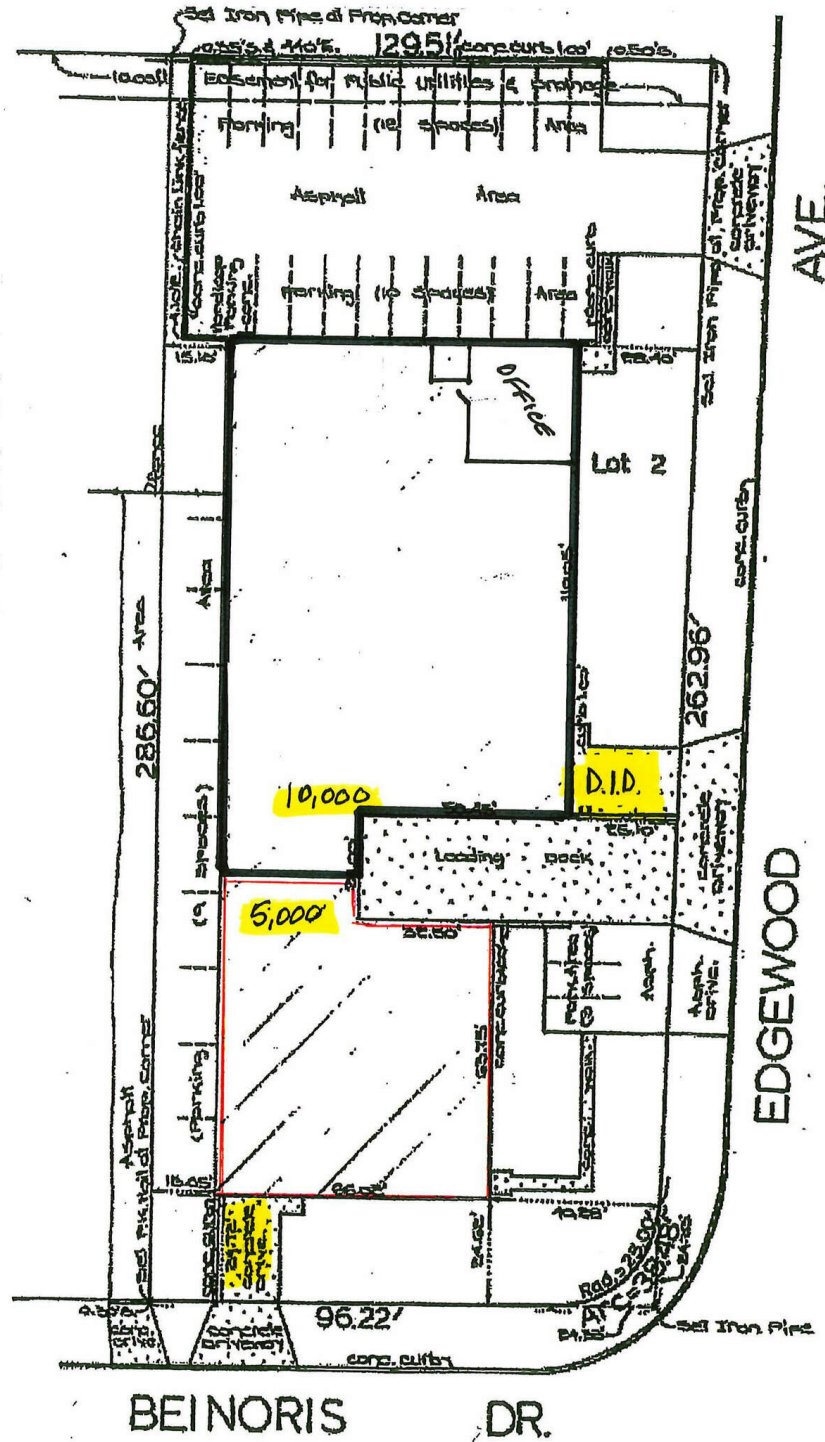
**Thomas Gath**

*Managing Director*

t 773-957-1415

[thomas.gath@nrmk.com](mailto:thomas.gath@nrmk.com)

**NEWMARK**



**Thomas Gath**

Managing Director

t 773-957-1415

thomas.gath@nrmk.com