

FOR LEASE

150-250 SF | \$2.00/SF/MO. MG

REED SOUTH

Brand New Executive Office Suites

21175 Reed Market Rd, Bend, OR 97703



PROPERTY DETAILS

- Suite 1:** 150 SF | \$300/Mo. Modified Gross
- Suite 2:** 150 SF | \$300/Mo. Modified Gross
- Suite 3:** 250 SF | \$500/Mo. Modified Gross
- Suite 4:** 250 SF | \$500/Mo. Modified Gross
- Suite 5:** 250 SF | \$500/Mo. Modified Gross
- Suite 6:** 180 SF | \$360/Mo. Modified Gross
- Suite 7:** 200 SF | \$300/Mo. Modified Gross

HIGHLIGHTS

- Class A second floor executive offices
- Great access to Reed South amenities including Reed Crossing Market, Cascade Lakes, Haven Bagel & Coffee Co, Axels Taco Shop and more!
- Traffic counts over 9,100 AADT on Reed Market Rd.
- Located near the future mixed-use development, Stevens Ranch, with 1,710 planned homes and the new 100,000 SF Central Library
- 131 on-site parking spaces (4.33/1,000 Ratio)

Russell Huntamer, CCIM | Bruce Churchill, Principal Broker
Eli Harrison, Broker

600 SW Columbia St., Ste. 6100 | Bend, OR 97702
541.383.2444 | www.CompassCommercial.com

COMPASS
COMMERCIAL

**REAL
ESTATE
SERVICES**

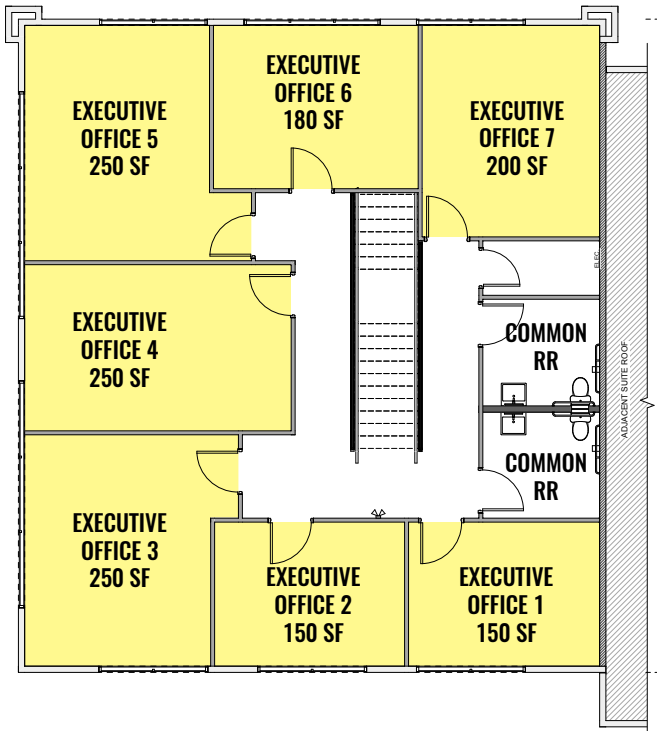
FOR LEASE

150-250 SF | \$2.00/SF/MO. MG

REED SOUTH

Brand New Executive Office Suites

21175 Reed Market Rd, Bend, OR 97703



Brokers are licensed in the state of Oregon. This information has been furnished from sources we deem reliable, but for which we assume no liability. This is an exclusive listing. The information contained herein is given in confidence with the understanding that all negotiations pertaining to this property be handled through Compass Commercial Real Estate Services. All measurements are approximate.



Russell Huntamer, CCIM
Partner, Principal Broker
Cell 541.419.2634
rh@compasscommercial.com



Bruce Churchill
Principal Broker
Cell 541.280.7560
bchurchill@compasscommercial.com



Eli Harrison
Broker
Cell 541.977.2890
eharrison@compasscommercial.com

COMPASS
COMMERCIAL
REAL ESTATE
SERVICES