

+/- 9.5 acres

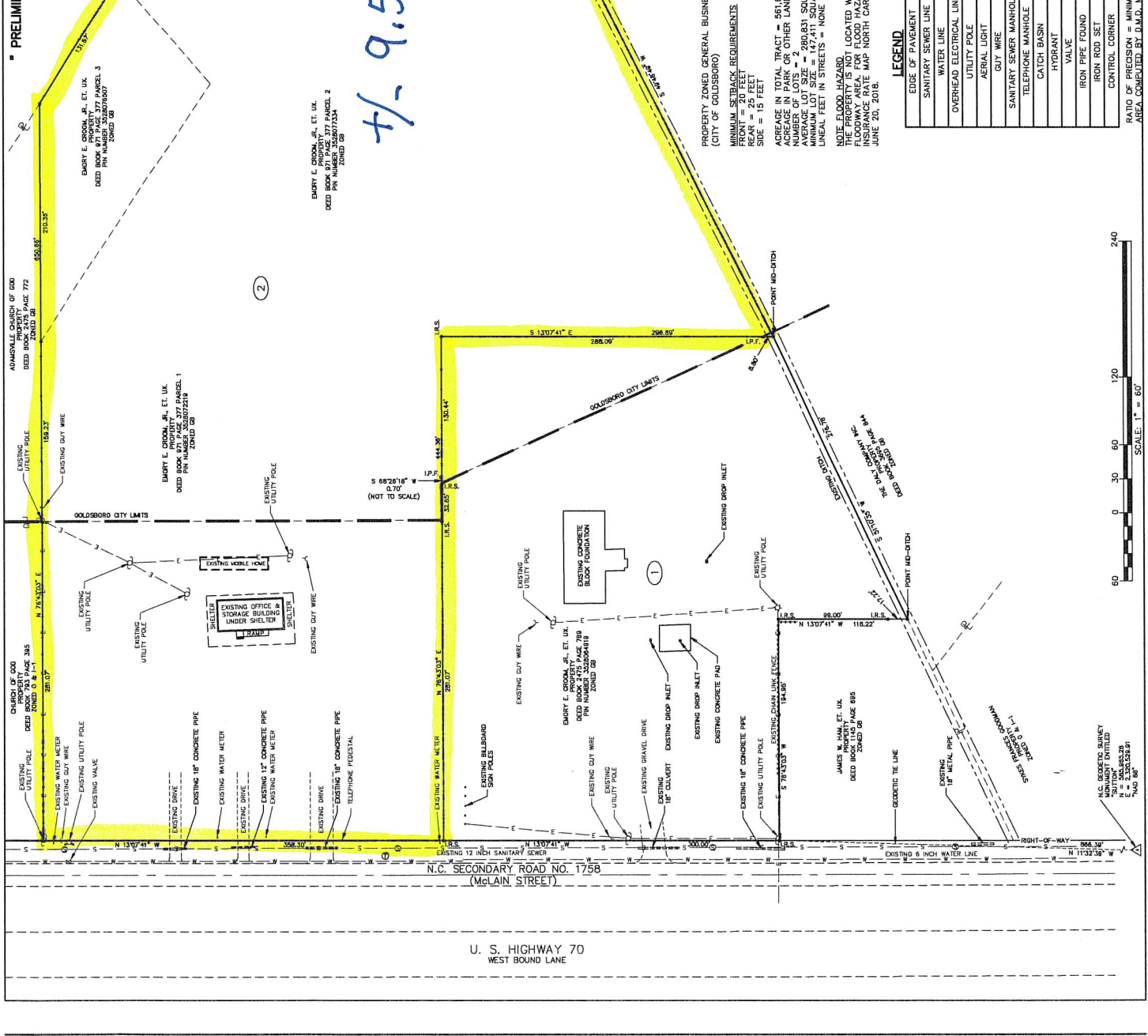
**PRELIMINARY PLAN
 PROPERTY OF
 EMORY E. CROOM, JR.
 AND WIFE
 LINDA S. CROOM
 CITY OF GOLDSBORO
 NEW HOPE TOWNSHIP
 WAYNE COUNTY, N.C.**

MAY 16, 2022

REFERENCE:
 DEED BOOK 2475 PAGE 769
 DEED BOOK 971 PAGE 377 PARCEL 1, 2 & 3

AREA TRACT NO. 1
 147,411 SQUARE FEET
 3.384 ACRES ±

AREA TRACT NO. 2
 414,251 SQUARE FEET
 9.510 ACRES ±



LEGEND

EXISTING	EXISTING
EDGE OF PAVEMENT	— S — S
SANITARY SEWER LINE	— S — S
WATER LINE	— W — W
OVERHEAD ELECTRICAL LINES	— E — E
UTILITY POLE	⊙
AERIAL LIGHT	⊙
GLY WIRE	⊙
SANITARY SEWER MANHOLE	⊙
TELEPHONE MANHOLE	⊙
CATCH BASIN	⊙
HYDRANT	⊙
VALVE	⊙
IRON PIPE FOUND	⊙
IRON ROD SET	⊙
CONTROL CORNER	⊙
RATIO OF PRECISION = MINIMUM 1/10,000	
AREA COMPUTED BY D.M.D. METHOD	

SCALE: 1" = 60'