

For Sale

11,000 Sq. Ft. Industrial Building

205 E. Burlington Avenue - Westmont, IL

Sale Price: \$895,000



- **Approx. 3,000 sq. ft. office space**
- **14' ceiling height**
- **Floor drains**
- **Loading: Two exterior docks**
One drive in door 8' x 10'
- **1960s masonry construction**
- **600 AMPs three phase power**
- **2025 DuPage County Real Estate Taxes:**
\$12,115.56
PIN #09-10-120-010
- **R-5 General Residential Zoning (former occupant legal nonconforming use. Confirm zoning for any future use)**
- **Blocks to downtown Westmont**
- **Site size: approx. 130' x 110' (14,300 sq. ft.)**
- **Mezzanine storage**
- **One ton bridge crane**

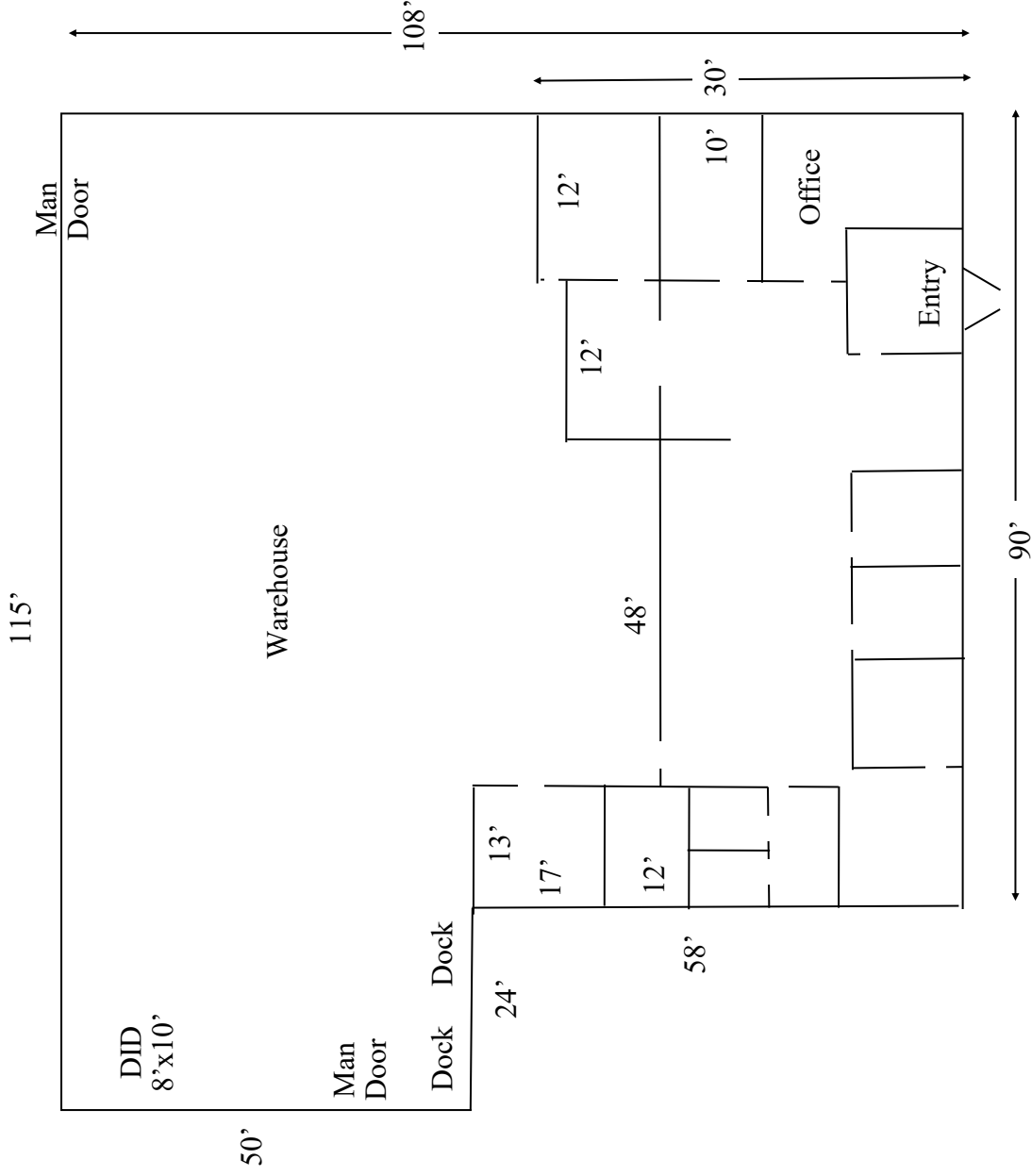


Exclusively Offered by:
Daniel Chopp
(708) 387-2640
dan@choppcommercial.com

All information herein is from sources deemed reliable but not guaranteed accurate.
Subject to errors, omissions, and to change of price and terms, prior sale or lease, all without notice.

Floor Plan 205 E. Burlington Avenue - Westmont, IL

NOTE: DRAWING NOT TO SCALE.

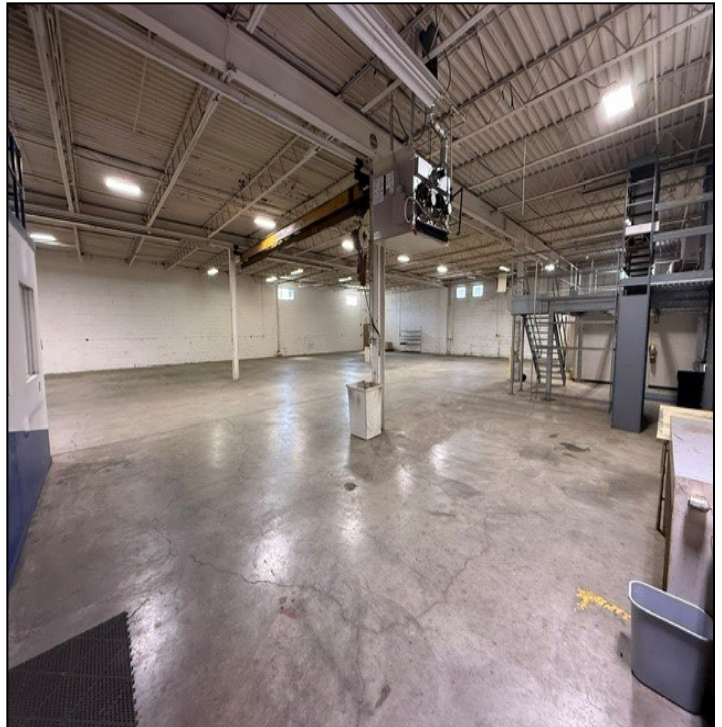


Exclusively Offered by:
Daniel Chopp
 (708) 387-2640
 dan@choppcommercial.com

All information herein is from sources deemed reliable but not guaranteed accurate. Subject to errors, omissions, and to change of price and terms, prior sale or lease, all without notice.

Warehouse Photos

205 E. Burlington Avenue - Westmont, IL



Exclusively Offered by:
Daniel Chopp
(708) 387-2640
dan@choppcommercial.com

All information herein is from sources deemed reliable but not guaranteed accurate.
Subject to errors, omissions, and to change of price and terms, prior sale or lease, all without notice.

Office Area Photos

205 E. Burlington Avenue - Westmont, IL



Exclusively Offered by:
Daniel Chopp
(708) 387-2640
dan@choppcommercial.com

All information herein is from sources deemed reliable but not guaranteed accurate.
Subject to errors, omissions, and to change of price and terms, prior sale or lease, all without notice.